

INDEX FOR P.L. 94-171 VOTING DISTRICT/STATE LEGISLATIVE DISTRICT OUTLINE MAP (CENSUS 2000)

INDEX MAP LEGEND

SYMBOL	NAME STYLE
*****	INTERNATIONAL
-----	AIR (FEDERAL)
-----	Trust Land/HLL
-----	OTSA/ANVSA/TDSA
-----	TRIBAL SUBDIVISION
-----	AIR (State)
-----	SDA/ISA
-----	ANRC
	STATE
	COUNTY
o-o-o-o-o	MINOR CIVIL DIV.¹
o-o-o-o-o	Consolidated City
o-o-o-o-o	Incorporated Place¹
o-o-o-o-o	Census Designated Place¹
[Inset]	Inset
[Out Area]	Out Area

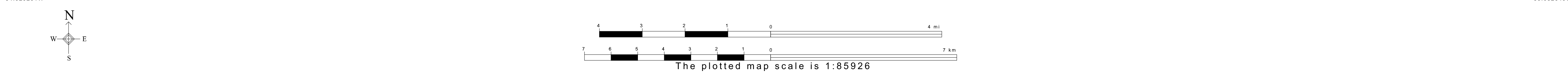
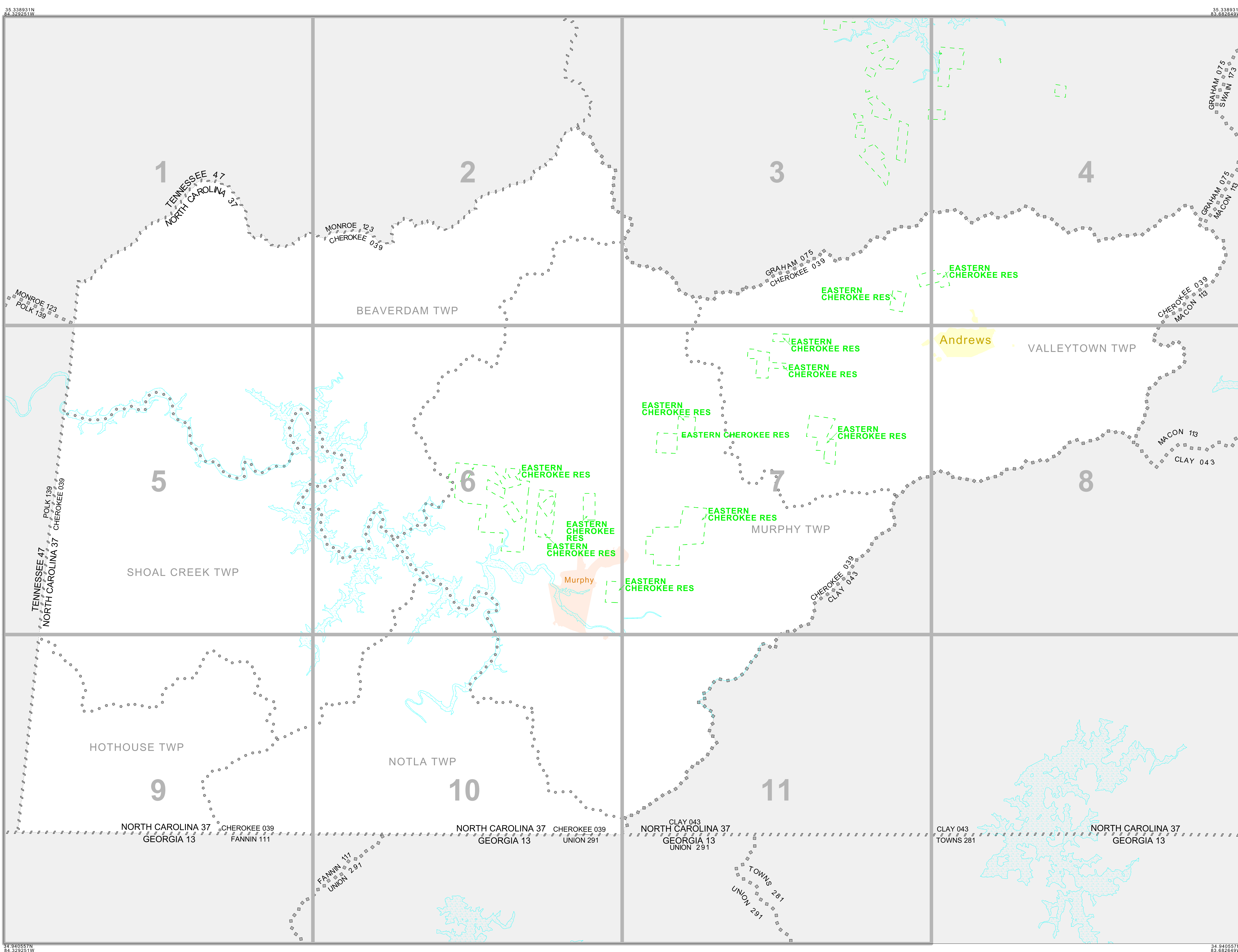
Abbreviation Reference: AIR - American Indian Reservation; Trust Land - Off-Reservation Trust Land; ANRC - Alaska Native Regional Corporation; TDSA - Tribal Designated Statistical Area; FRTS - Federal Reserve Tribal Statistical Area; American Indian Tribal Subdivision; SDA/ISA - State Designated American Indian Statistical Area; ANRC - Alaska Native Regional Corporation

¹ A - * following a place name indicates that the place is consecutive with a MCD. A - * indicates that the place is also a false MCD. In both cases, the MCD name is shown only when it differs from the place name.

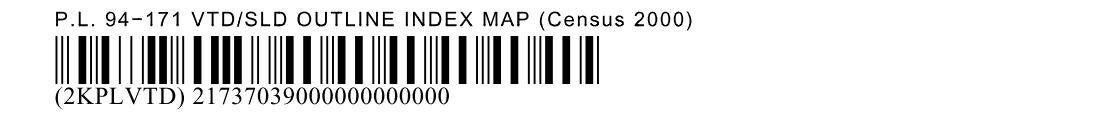
P.L. 94-171 VOTING DISTRICT/STATE LEGISLATIVE DISTRICT OUTLINE MAP (CENSUS 2000)

SYMBOL DESCRIPTION	SYMBOL	NAME STYLE
International	*****	CANADA
American Indian Reservation (Federal)	*****	L'ANSE RES (1880)
Off-Reservation Trust Land, Hawaiian Home Land	*****	T1880
Oklahoma Tribal Statistical Area, Alaska Native Village Statistical Area, Tribal Designated Statistical Area	o-o-o-o-o	KAW OTSA (5340)
American Indian Tribal Subdivision	o-o-o-o-o	SHONTO (620)
American Indian Reservation (State)	o-o-o-o-o	Tama Res (4125)
State Designated American Indian Statistical Area	o-o-o-o-o	Lumbee (9815)
Alaska Native Regional Corporation	o-o-o-o-o	NANA ANRC 52120
State or Statistically Equivalent Entity	o-o-o-o-o	NEW YORK 36
County or Statistically Equivalent Entity	o-o-o-o-o	ERIE 029
Minor Civil Division (MCD)¹	o-o-o-o-o	PIKE TWP 59742
Census County Division (CCD)	o-o-o-o-o	KULA CCD 91890
Consolidated City	o-o-o-o-o	Milford 47500
Incorporated Place¹	o-o-o-o-o	Rome 63418
Census Designated Place (CDP)¹	o-o-o-o-o	Zena 84187
Voting District (VTD)²	o-o-o-o-o	141*
State Legislative District - Senate (SLD-Senate)	o-o-o-o-o	072
State Legislative District - House (SLD-House)	o-o-o-o-o	023

FEATURE	SYMBOL	FEATURE	SYMBOL
All Roads	MoSt	Personal Stream of Shoreline	Tumbling Cr.
Railroad	Southern RR	Intermittent Stream of Shoreline	Flores Cr.
Pipeline or Power Line	-----	Large River or Lake	Pleasant Lake
Ridge, Fence, or Other Physical Feature	-----	Glacier	Bering Glacier
Nonvisible Boundary or Feature Not Elsewhere Classified	-----	Military Installation	Fort Belvoir
Inset Area	A	Outside Subject Area	



ST: North Carolina (37)
 COU: Cherokee (039)
 INDEX MAP (TOTAL PARENT SHEETS 11 TOTAL INSET SHEETS 0)



All legal boundaries and names are as of January 1, 2000. The boundaries shown on this map are for Census Bureau statistical data collection and tabulation purposes only; their depiction and designation for statistical purposes does not constitute a determination of jurisdictional authority or rights of ownership or entitlement. U.S. DEPARTMENT OF COMMERCE Economics and Statistics Administration U.S. Census Bureau