

P.L. 94-171 VOTING DISTRICT/STATE LEGISLATIVE DISTRICT OUTLINE MAP (CENSUS 2000)

36 214871N  
77 952104W

36 214871N  
77 707881W

**GEOGRAPHIC AREAS LEGEND**

SYMBOL	NAME STYLE
*****	INTERNATIONAL
*****	AIR (FEDERAL)
◇◇◇◇◇◇	SDA/SA
◇◇◇◇◇◇	TRIBAL SUBDIVISION
//////	STATE
■■■■■■	COUNTY
□□□□□□	MINOR CIVIL DIV. <sup>1</sup>
■■■■■■	Incorporated Place <sup>1</sup>
■■■■■■	Census Designated Place <sup>1</sup>
●●●●●●	Voting District <sup>2</sup>
●●●●●●	SLD-Senate
▲▲▲▲▲▲	SLD-House
■	Military
Inset	Inset
Out Area	Out Area

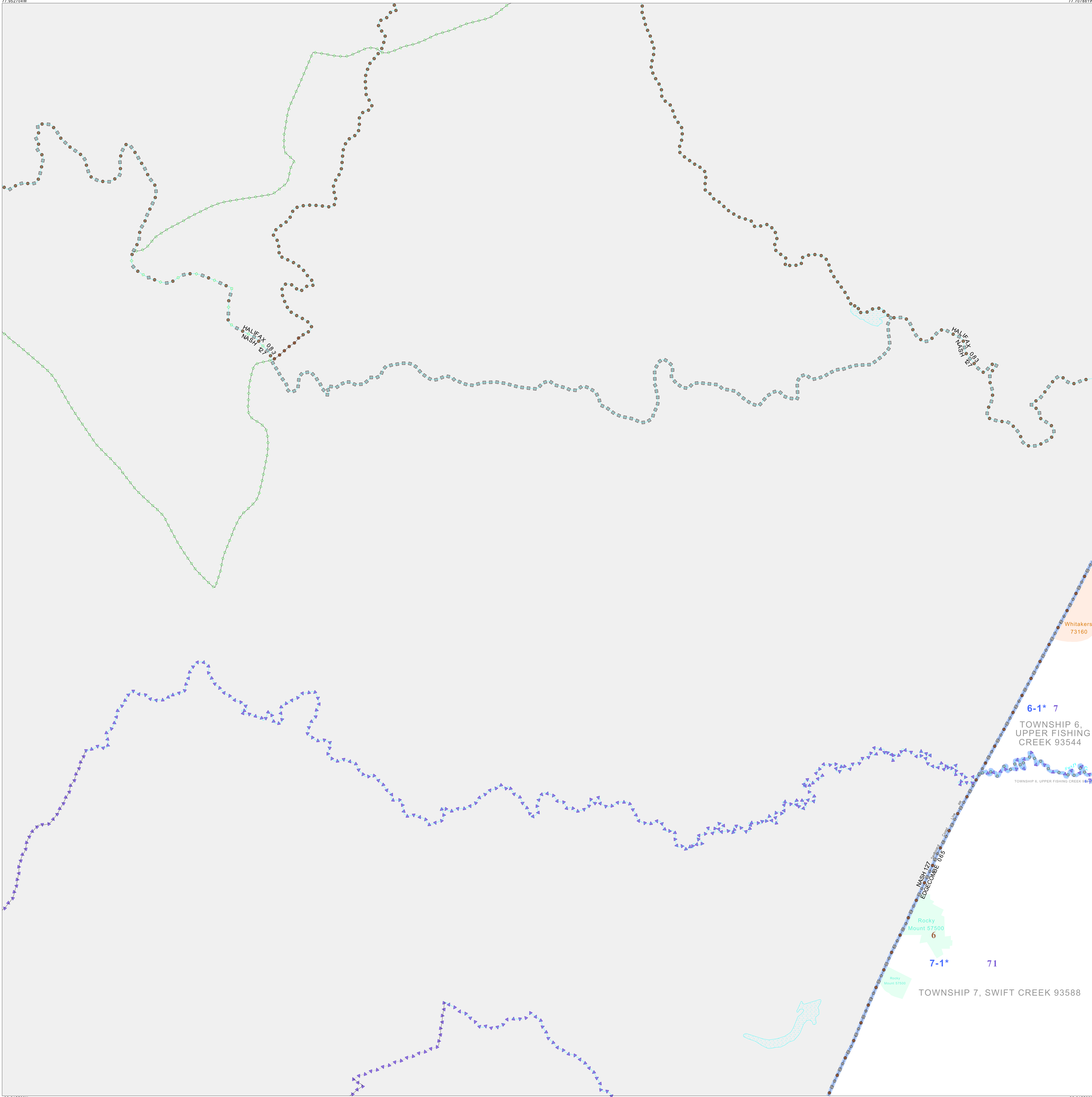
Abbreviation Reference: AIR - American Indian Reservation; SDA/SA - State Designated American Indian Statistical Area; Tribal Subdivision - American Indian Tribal Subdivision

1 A \* \* following a place name indicates that the place is coterminous with a MCD. A \* \* indicates that the place is also a false MCD. In both cases, the MCD name is shown only when it differs from the place name.

2 A \* \* following a VTD code indicates an actual voting district. Its absence indicates that the VTD is a pseudo-voting district or no information is available as to its status.

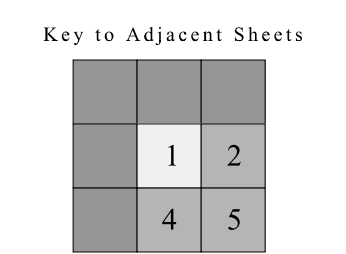
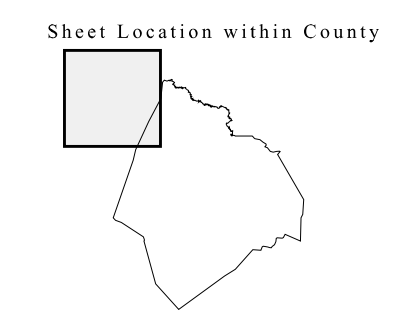
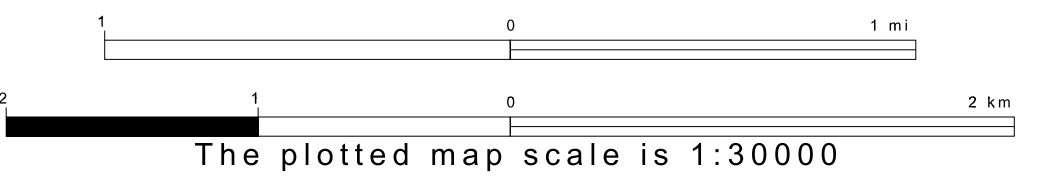
**Voting Districts**

Code	Name
6-1*	Voting District 6-1
7-1*	Voting District 7-1

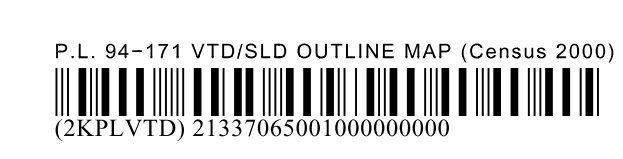


36 015509N  
77 952104W

36 015509N  
77 707881W



ST: North Carolina (37)  
COU: Edgemont (065)  
SHEET 1 OF 9 PARENT SHEETS



All legal boundaries and names are as of January 1, 2000. The boundaries shown on this map are for Census Bureau statistical data collection and tabulation purposes only; their depiction and designation for statistical purposes does not constitute a determination of jurisdictional authority or rights of ownership or entitlement. U.S. DEPARTMENT OF COMMERCE Economics and Statistics Administration U.S. Census Bureau