

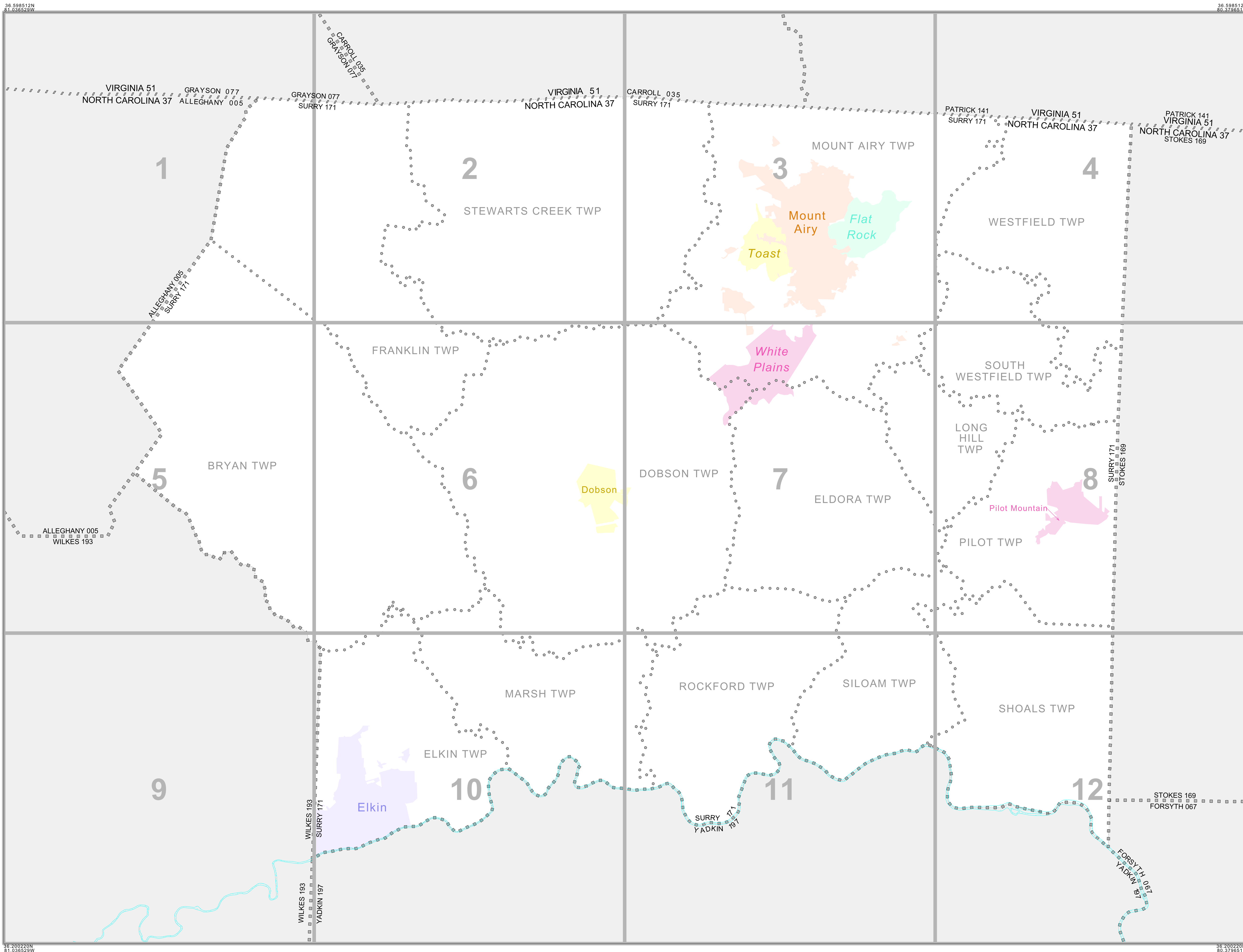
INDEX FOR P.L. 94-171 VOTING DISTRICT/STATE LEGISLATIVE DISTRICT OUTLINE MAP (CENSUS 2000)

INDEX MAP LEGEND

SYMBOL	NAME STYLE
*****	INTERNATIONAL
-----	AIR (FEDERAL)
-----	Trust Land/HHL
-----	OTSA/ANVSA/TDSA
-----	TRIBAL SUBDIVISION
-----	AIR (State)
-----	SDA/ISA
-----	ANRC
#####	STATE
#####	COUNTY
o-o-o-o-o	MINOR CIVIL DIV.¹
o-o-o-o-o	Consolidated City
o-o-o-o-o	Incorporated Place¹
o-o-o-o-o	Census Designated Place¹
[Inset]	Inset
[Out Area]	Out Area

Abbreviation Reference: AIR = American Indian Reservation; Trust Land = Off-Reservation Trust Land; ANRC = Alaska Native Regional Corporation; TDSA = Tribal Designated Statistical Area; Tribal Subdivision = American Indian Tribal Subdivision; SDA/ISA = State Designated American Indian Statistical Area; ANRC = Alaska Native Regional Corporation

¹ A "*" following a place name indicates that the place is coextensive with a MCD. A "C" indicates that the place is also a false MCD. In both cases, the MCD name is shown only when it differs from the place name.

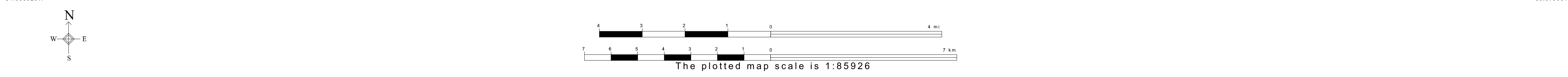


P.L. 94-171 VOTING DISTRICT/STATE LEGISLATIVE DISTRICT OUTLINE MAP (CENSUS 2000)

SYMBOL DESCRIPTION	SYMBOL	NAME STYLE
International	*****	CANADA
American Indian Reservation (Federal)	*****	L'ANSE RES (1880)
Off-Reservation Trust Land, Hawaiian Home Land	*****	T1880
Oklahoma Tribal Statistical Area, Alaska Native Village Statistical Area, Tribal Designated Statistical Area	o-o-o-o-o	KAW OTSA (5340)
American Indian Tribal Subdivision	o-o-o-o-o	SHONTO (620)
American Indian Reservation (State)	o-o-o-o-o	Tama Res (4125)
State Designated American Indian Statistical Area	o-o-o-o-o	Lumbee (9815)
Alaska Native Regional Corporation	o-o-o-o-o	NANA ANRC 52120
State or Statistically Equivalent Entity	o-o-o-o-o	NEW YORK 36
County or Statistically Equivalent Entity	o-o-o-o-o	ERIE 029
Minor Civil Division (MCD)¹	o-o-o-o-o	PIKE TWP 59742
Census County Division (CCD)	o-o-o-o-o	KULA CCD 91890
Consolidated City	o-o-o-o-o	Milford 47500
Incorporated Place¹	o-o-o-o-o	Rome 63418
Census Designated Place (CDP)¹	o-o-o-o-o	Zena 84187
Voting District (VTD)²	o-o-o-o-o	141*
State Legislative District - Senate (SLD-Senate)	o-o-o-o-o	072
State Legislative District - House (SLD-House)	o-o-o-o-o	023

FEATURE	SYMBOL	FEATURE	SYMBOL
All Roads	--- Main St ---	Personal Stream of Shoreline	~~~~~ Tumbling Cr. ~~~~~
Railroad	--- Southern RR ---	Intermittent Stream of Shoreline	~~~~~ Flory Cr. ~~~~~
Pipelene or Power Line	--- ---	Large River or Lake	~~~~~ Pleasant Lake ~~~~~
Ridge, Fence, or Other Physical Feature	--- ---	Glacier	~~~~~ Bering Glacier ~~~~~
Nonvisible Boundary or Feature Not Elsewhere Classified	--- ---	Military Installation	~~~~~ Fort Belvoir ~~~~~
Inset Area	[A]	Outside Subject Area	[]

Where international, state, and/or county boundaries coincide, the map shows the boundary symbol for only the highest-ranking of these boundaries.
 1. A "*" following a place name indicates that the place is coextensive with a MCD. A "C" following an incorporated place name indicates that the place is also a false MCD. In both cases, the MCD name is shown only when it differs from the place name.
 2. A "*" following a VTD code indicates an actual voting district. Its absence indicates that the VTD is a pseudo voting district or no information is available as to its status.



All legal boundaries and names are as of January 1, 2000. The boundaries shown on this map are for Census Bureau statistical data collection and tabulation purposes only; their depiction and designation for statistical purposes does not constitute a determination of jurisdictional authority or rights of ownership or entitlement. U.S. DEPARTMENT OF COMMERCE Economics and Statistics Administration U.S. Census Bureau