

P.L. 94-171 VOTING DISTRICT/STATE LEGISLATIVE DISTRICT OUTLINE MAP (CENSUS 2000)

34 483108N  
76 273869W

34 483108N  
77 768320W

### GEOGRAPHIC AREAS LEGEND

SYMBOL	NAME STYLE
*****	INTERNATIONAL
*****	AIR (FEDERAL)
◇◇◇◇◇	SDA/SA
◇◇◇◇◇	TRIBAL SUBDIVISION
//////	STATE
	COUNTY
	MINOR CIVIL DIV. <sup>1</sup>
■ ■ ■ ■ ■	Incorporated Place <sup>1</sup>
■ ■ ■ ■ ■	Census Designated Place <sup>2</sup>
— — — — —	Voting District <sup>2</sup>
● ● ● ● ●	SLD-Senate
▲ ▲ ▲ ▲ ▲	SLD-House
■ ■ ■ ■ ■	Military
Inset	Out Area

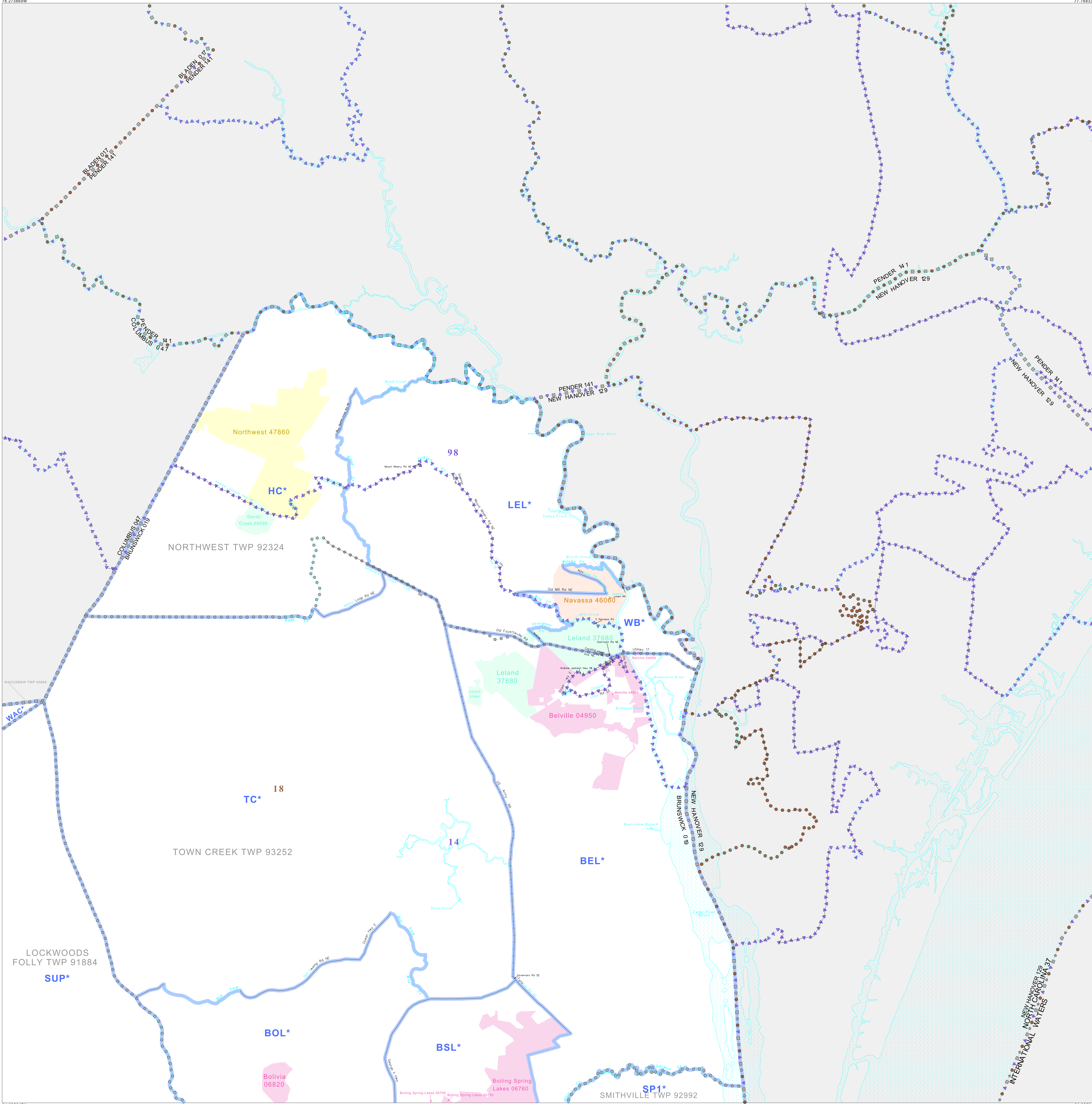
Abbreviation Reference: AIR - American Indian Reservation; SDA/SA - State Designated American Indian Statistical Area; Tribal Subdivision - American Indian Tribal Subdivision

1 A \* following a place name indicates that the place is coterminous with a MCD. A \* indicates that the place is also a false MCD. In both cases, the MCD name is shown only when it differs from the place name.

2 A \* following a VTD code indicates an actual voting district. Its absence indicates that the VTD is a pseudo-voting district or no information is available as to its status.

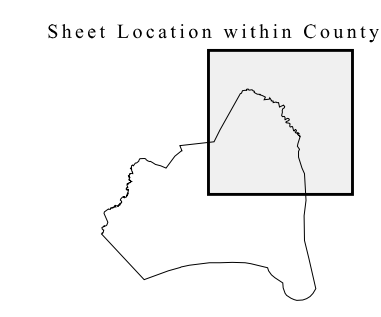
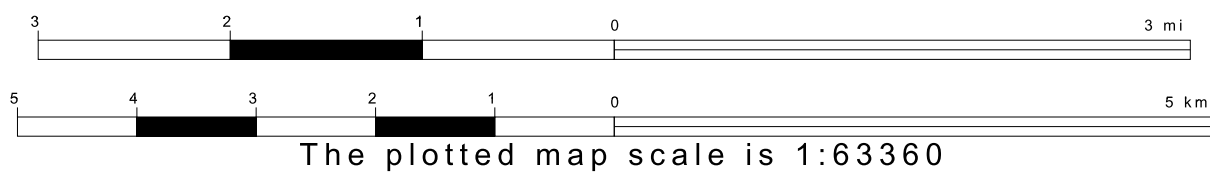
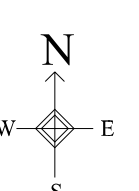
### Voting Districts

Code	Name
HC*	HOODS CREEK Voting District
TC*	TOWN CREEK Voting District
WB*	WOODS BURN Voting District
BE*	BELVILLE Voting District
BSL*	BOLIVIA Voting District
BSL*	BOLLING SPRING LAKES Voting District
LE*	LELAND Voting District
SP1*	SOUTHPORT 1 Voting District
SP*	SUPPLY Voting District
WAC*	WACCAMAW Voting District



34 062347N  
76 273869W

34 062347N  
77 768320W



Key to Adjacent Sheets

1	2
3	4

ST: North Carolina (37)  
COU: Brunswick (019)  
SHEET 2 OF 4 PARENT SHEETS

