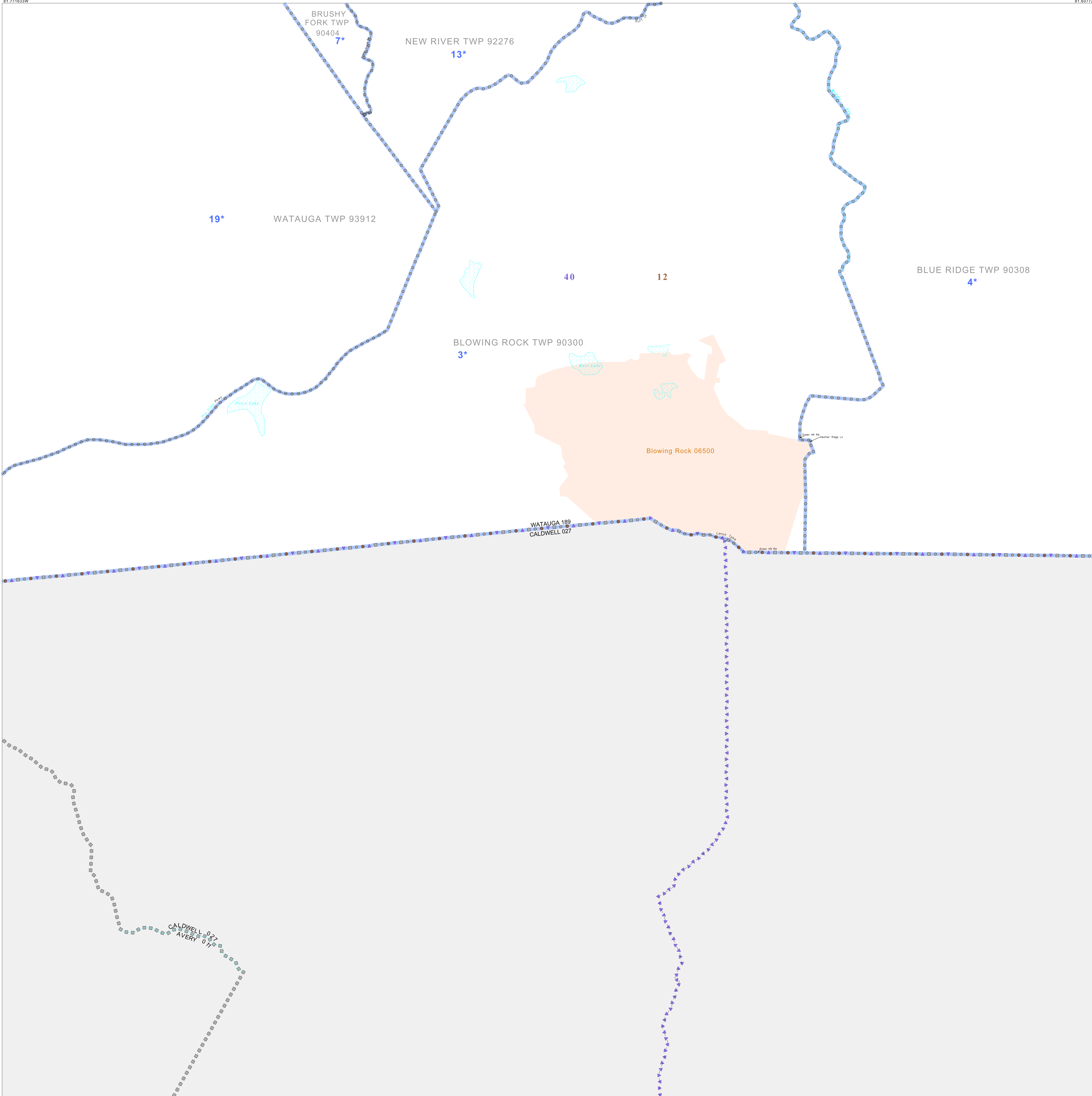


P.L. 94-171 VOTING DISTRICT/STATE LEGISLATIVE DISTRICT OUTLINE MAP (CENSUS 2000)

36 184970N
81.771633W

36 184970N
81.607723W



GEOGRAPHIC AREAS LEGEND

SYMBOL	NAME STYLE
*****	INTERNATIONAL
*****	AIR (FEDERAL)
◇◇◇◇◇	SDA/SA
◇◇◇◇◇	TRIBAL SUBDIVISION
///////	STATE
#####	COUNTY
#####	MINOR CIVIL DIV. ¹
#####	Incorporated Place ¹
#####	Census Designated Place ¹
#####	Voting District ²
●●●●●	SLD-Senate
▲▲▲▲▲	SLD-House
▲▲▲▲▲	Military
Inset	Inset
Out Area	Out Area

Abbreviation Reference: AIR - American Indian Reservation; SDA/SA - State Designated American Indian Statistical Area; Tribal Subdivision - American Indian Tribal Subdivision

1 A * following a place name indicates that the place is coterminous with a MCD. A * indicates that the place is also a false MCD. In both cases, the MCD name is shown only when it differs from the place name.

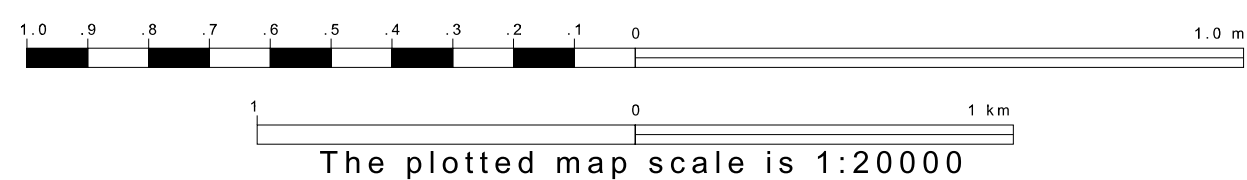
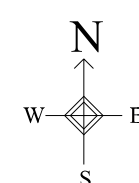
2 A * following a VTD code indicates an actual voting district. Its absence indicates that the VTD is a pseudo-voting district or no information is available as to its status.

Voting Districts

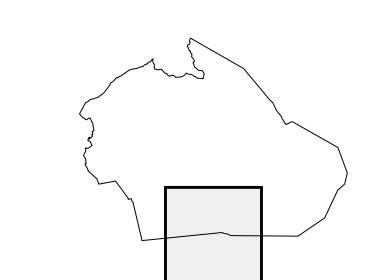
Code	Name
3*	Blowing Rock Voting District
4*	Blue Ridge Voting District
7*	Brushy Fork Voting District
12*	New River 1 Voting District
13*	Watauga Voting District

36 052203N
81.771633W

36 052203N
81.607723W



Sheet Location within County



Key to Adjacent Sheets

4	5	6
7	8	9

ST: North Carolina (37)
COU: Watauga (189)
SHEET 8 OF 9 PARENT SHEETS

