

P.L. 94-171 VOTING DISTRICT/STATE LEGISLATIVE DISTRICT OUTLINE MAP (CENSUS 2000)

35 391195N
81 127923W

35 391195N
80 966037W

GEOGRAPHIC AREAS LEGEND

SYMBOL	NAME STYLE
*****	INTERNATIONAL
*****	AIR (FEDERAL)
◇◇◇◇◇	SDA/SA
◇◇◇◇◇	TRIBAL SUBDIVISION
///////	STATE
#####	COUNTY
□□□□□	MINOR CIVIL DIV. ¹
■	Incorporated Place ¹
■	Census Designated Place ¹
●●●●●	Voting District ²
●●●●●	SLD-Senate
▲▲▲▲▲	SLD-House
■	Military
Inset	Inset
Out Area	Out Area

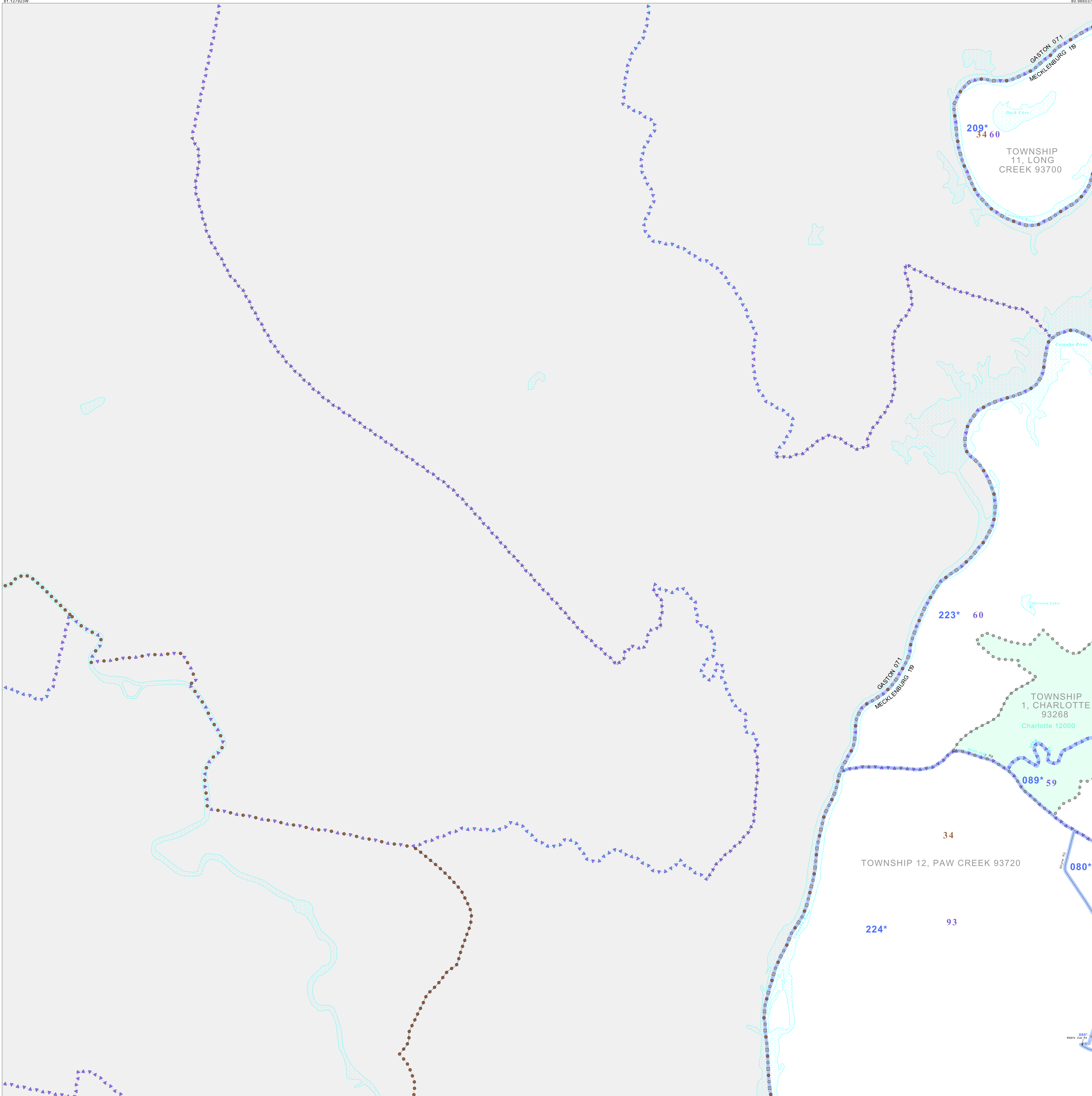
Abbreviation Reference: AIR - American Indian Reservation; SDA/SA - State Designated American Indian Statistical Area; Tribal Subdivision - American Indian Tribal Subdivision

1 A * * following a place name indicates that the place is coterminous with a MCD. A * indicates that the place is also a false MCD. In both cases, the MCD name is shown only when it differs from the place name.

2 A * * following a VTD code indicates an actual voting district. Its absence indicates that the VTD is a pseudo-voting district or no information is available as to its status.

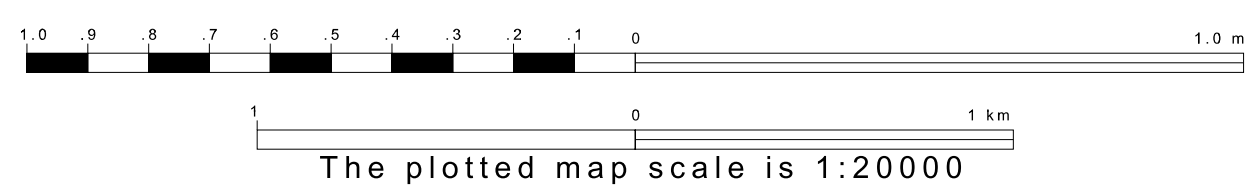
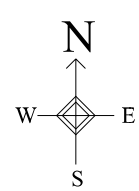
Voting Districts

Code	Name
089*	Voting District 089
089*	Voting District 089
223*	Voting District 223
223*	Voting District 223
224*	Voting District 224

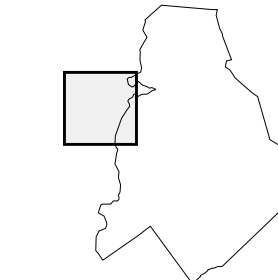


35 268405N
81 127923W

35 268405N
80 966037W



Sheet Location within County



Key to Adjacent Sheets

2	1
3	4
6	7

ST: North Carolina (37)
COU: Mecklenburg (119)
SHEET 3 OF 12 PARENT SHEETS

