

GEOGRAPHIC AREAS LEGEND

SYMBOL	NAME STYLE
*****	INTERNATIONAL
*****	AIR (FEDERAL)
◇◇◇◇◇	SDA/SA
◇◇◇◇◇	TRIBAL SUBDIVISION
///////	STATE
■■■■■	COUNTY
□□□□□	MINOR CIVIL DIV. ¹
■■■■■	Incorporated Place ¹
■■■■■	Census Designated Place ¹
■■■■■	Voting District ²
●●●●●	SLD-Senate
▲▲▲▲▲	SLD-House
■	Military
■	Inset
■	Out Area

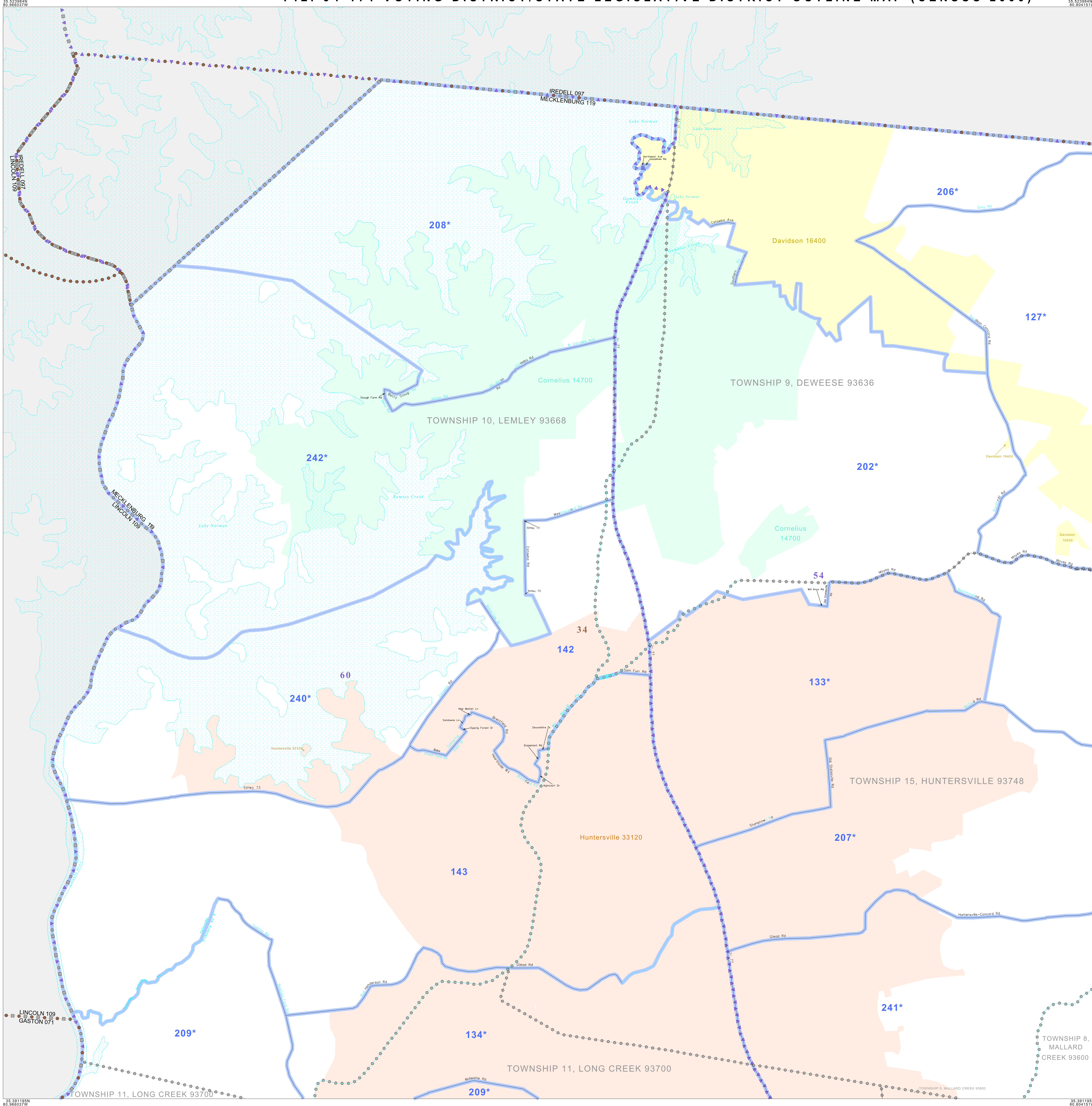
Abbreviation Reference: AIR - American Indian Reservation; SDA/SA - State Designated American Indian Statistical Area; Tribal Subdivision - American Indian Tribal Subdivision

1 A * * following a place name indicates that the place is coterminous with a MCD. A * * indicates that the place is also a false MCD. In both cases, the MCD name is shown only when it differs from the place name.

2 A * * following a VTD code indicates an actual voting district. Its absence indicates that the VTD is a pseudo-voting district or no information is available as to its status.

Voting Districts

Code	Name
127*	Voting District 127
133*	Voting District 133
134*	Voting District 134
142	Voting District 142
143	Voting District 143
202*	Voting District 202
208*	Voting District 208
207*	Voting District 207
209*	Voting District 209
240*	Voting District 240
241*	Voting District 241
242*	Voting District 242



35 52384N
80 966037W

The plotted map scale is 1:20000

Sheet Location within County

Key to Adjacent Sheets

ST: North Carolina (37)
 COU: Mecklenburg (119)
 SHEET 1 OF 12 PARENT SHEETS

All legal boundaries and names are as of January 1, 2000. The boundaries shown on this map are for Census Bureau statistical data collection and tabulation purposes only; their depiction and designation for statistical purposes does not constitute a determination of jurisdictional authority or rights of ownership or entitlement. U.S. DEPARTMENT OF COMMERCE Economics and Statistics Administration U.S. Census Bureau

