

P.L. 94-171 VOTING DISTRICT/STATE LEGISLATIVE DISTRICT OUTLINE MAP (CENSUS 2000)

GEOGRAPHIC AREAS LEGEND

SYMBOL	NAME STYLE
☆☆☆☆☆	INTERNATIONAL
*****	AIR (FEDERAL)
◇◇◇◇◇	SDA/SA
○	TRIBAL SUBDIVISION
///////	STATE
■■■■■	COUNTY
□	MINOR CIVIL DIV. ¹
■	Incorporated Place ¹
■	Census Designated Place ¹
—	Voting District ²
●	SLD-Senate
▲	SLD-House
■	Military
□	Inset
□	Out Area

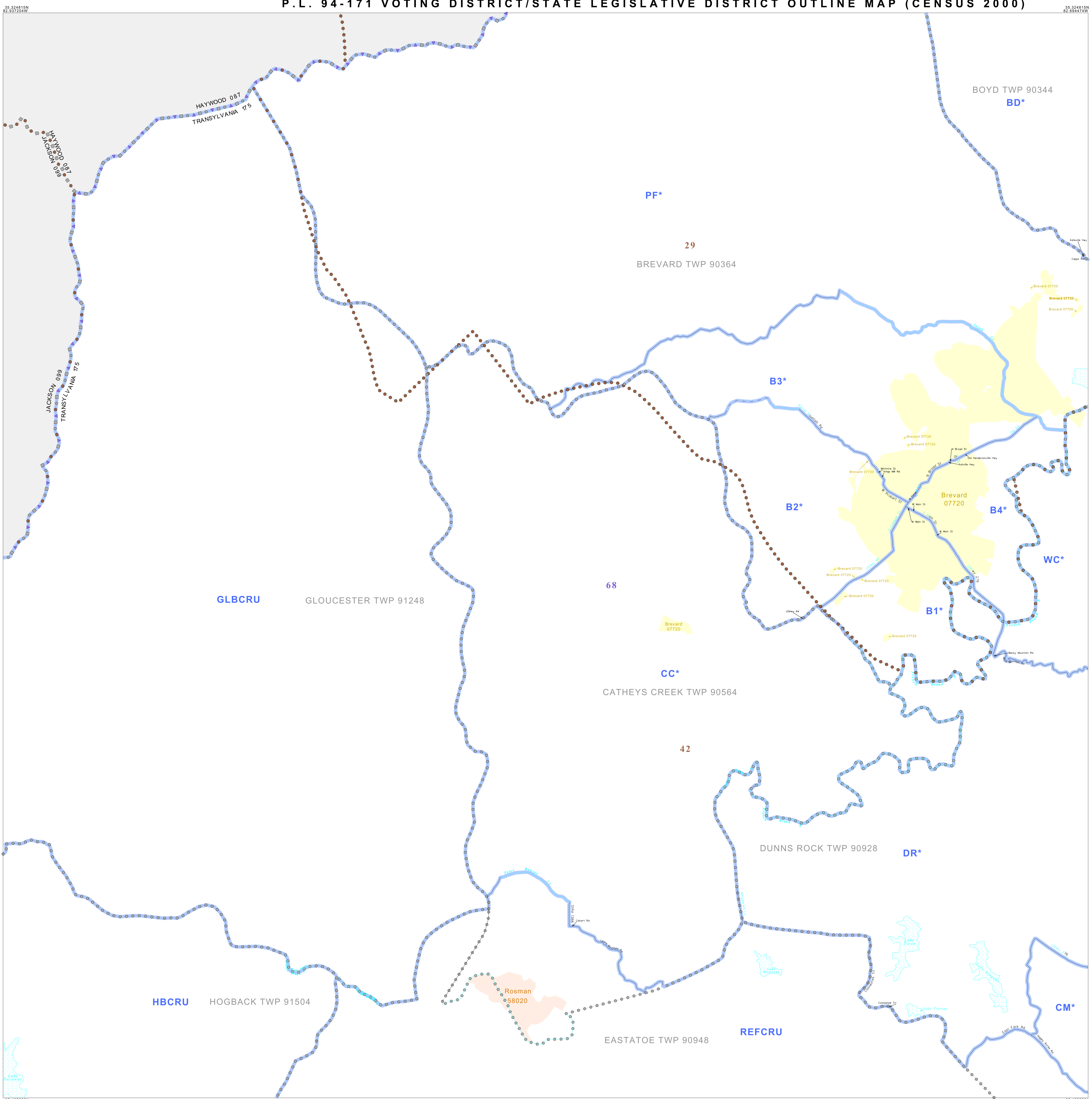
Abbreviation Reference: AIR - American Indian Reservation; SDA/SA - State Designated American Indian Statistical Area; Tribal Subdivision - American Indian Tribal Subdivision

1 A * following a place name indicates that the place is coextensive with a MCD. A * indicates that the place is also a false MCD. In both cases, the MCD name is shown only when it differs from the place name.

2 A * following a VTD code indicates an actual voting district. Its absence indicates that the VTD is a pseudo-voting district or no information is available as to its status.

Voting Districts

Code	Name
B1*	Brevard 1 Voting District
B2*	Brevard 2 Voting District
B3*	Brevard 3 Voting District
B4*	Brevard 4 Voting District
BD*	Boyd Voting District
CC*	Catheys Creek Voting District
CM*	Clear Mountain Voting District
DR*	Dunns Rock Voting District
PF*	Prugh Forest Voting District
WC*	Williams Creek Voting District
HBCRU	Hogback CRU Voting District
GLBCRU	Gloucester CRU Voting District
REFCRU	Eastatoe CRU Voting District



The plotted map scale is 1:30000

Sheet Location within County

Key to Adjacent Sheets

1	2
3	4
6	7
8	

ST: North Carolina (37)
 COU: Transylvania (175)
 SHEET 4 OF 8 PARENT SHEETS

All legal boundaries and names are as of January 1, 2000. The boundaries shown on this map are for Census Bureau statistical data collection and tabulation purposes only; their depiction and designation for statistical purposes does not constitute a determination of jurisdictional authority or rights of ownership or entitlement. U.S. DEPARTMENT OF COMMERCE Economics and Statistics Administration U.S. Census Bureau

