

P.L. 94-171 VOTING DISTRICT/STATE LEGISLATIVE DISTRICT OUTLINE MAP (CENSUS 2000)

35 587128N
84 041857W

35 587128N
83 798340W

GEOGRAPHIC AREAS LEGEND

SYMBOL	NAME STYLE
*****	INTERNATIONAL
*****	AIR (FEDERAL)
◇◇◇◇◇	SDA/SA
◇◇◇◇◇	TRIBAL SUBDIVISION
///////	STATE
■■■■■	COUNTY
□□□□□	MINOR CIVIL DIV. ¹
■■■■■	Incorporated Place ¹
■■■■■	Census Designated Place ¹
■■■■■	Voting District ²
●●●●●	SLD-Senate
▲▲▲▲▲	SLD-House
■	Military
Inset	Inset
Out Area	Out Area

Abbreviation Reference: AIR - American Indian Reservation; SDA/SA - State Designated American Indian Statistical Area; Tribal Subdivision - American Indian Tribal Subdivision

1 A * following a place name indicates that the place is coterminous with a MCD. A * indicates that the place is also a false MCD. In both cases, the MCD name is shown only when it differs from the place name.

2 A * following a VTD code indicates an actual voting district. Its absence indicates that the VTD is a pseudo-voting district or no information is available as to its status.

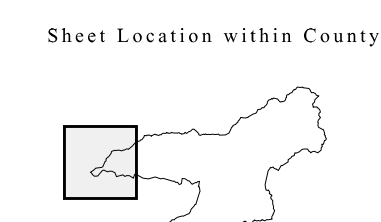
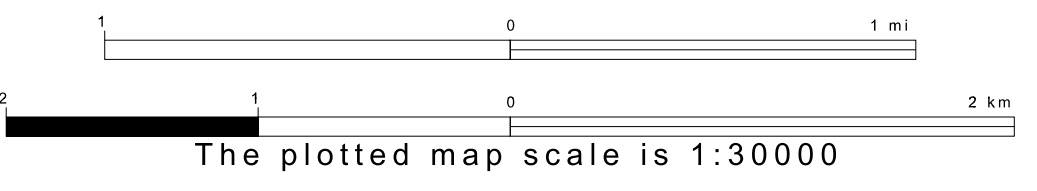
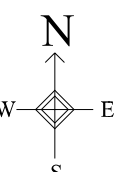
Voting Districts

Code	Name
01*	Bryson City 2 Voting District
SWCRU*	Swain CRU Voting District



35 387952N
84 041857W

35 387952N
83 798340W



Key to Adjacent Sheets

2	3	4
1	3	4
0	7	8

ST: North Carolina (37)
 COU: Swain (173)
 SHEET 3 OF 8 PARENT SHEETS

All legal boundaries and names are as of January 1, 2000. The boundaries shown on this map are for Census Bureau statistical data collection and tabulation purposes only; their depiction and designation for statistical purposes does not constitute a determination of jurisdictional authority or rights of ownership or entitlement. U.S. DEPARTMENT OF COMMERCE Economics and Statistics Administration U.S. Census Bureau

