

P.L. 94-171 VOTING DISTRICT/STATE LEGISLATIVE DISTRICT OUTLINE MAP (CENSUS 2000)

35 863052N
81 112462W

35 863052N
80 990075W



GEOGRAPHIC AREAS LEGEND

SYMBOL	NAME STYLE
*****	INTERNATIONAL
*****	AIR (FEDERAL)
◇◇◇◇◇	SDA/SA
◇◇◇◇◇	TRIBAL SUBDIVISION
///////	STATE
#####	COUNTY
#####	MINOR CIVIL DIV. ¹
#####	Incorporated Place ¹
#####	Census Designated Place ¹
-----	Voting District ²
●●●●●	SLD-Senate
▲▲▲▲▲	SLD-House
■	Military
Inset	Inset
Out Area	Out Area

Abbreviation Reference: AIR - American Indian Reservation; SDA/SA - State Designated American Indian Statistical Area; Tribal Subdivision - American Indian Tribal Subdivision

¹ A * following a place name indicates that the place is coterminous with a MCD. A * indicates that the place is also a false MCD. In both cases, the MCD name is shown only when it differs from the place name.

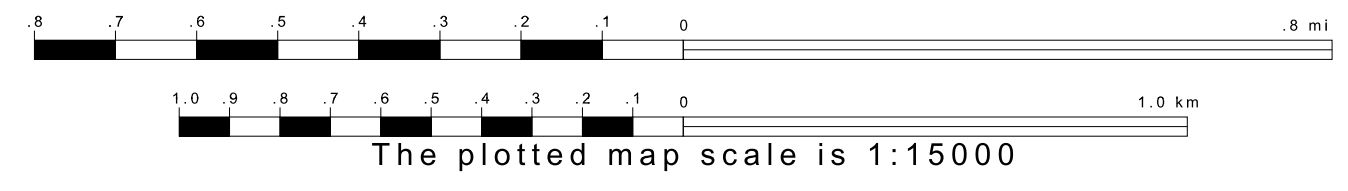
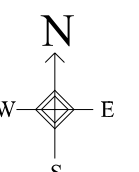
² A * following a VTD code indicates an actual voting district. Its absence indicates that the VTD is a pseudo-voting district or no information is available as to its status.

Voting Districts

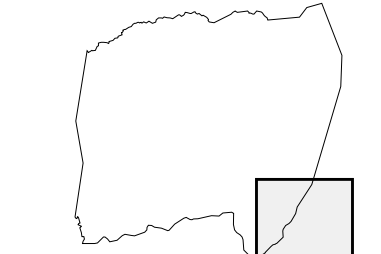
Code	Name
M*	Millers Voting District
S2*	Sharpes 2 Voting District

35 763471N
81 112462W

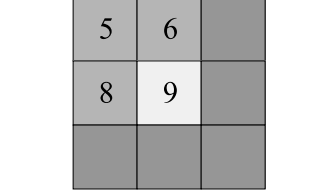
35 763471N
80 990075W



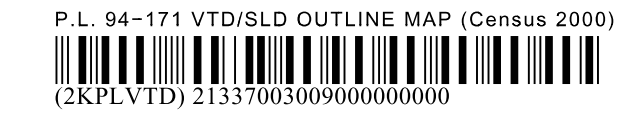
Sheet Location within County



Key to Adjacent Sheets



ST: North Carolina (37)
COU: Alexander (003)
SHEET 9 OF 9 PARENT SHEETS



All legal boundaries and names are as of January 1, 2000. The boundaries shown on this map are for Census Bureau statistical data collection and tabulation purposes only; their depiction and designation for statistical purposes does not constitute a determination of jurisdictional authority or rights of ownership or entitlement. U.S. DEPARTMENT OF COMMERCE Economics and Statistics Administration U.S. Census Bureau