

P.L. 94-171 VOTING DISTRICT/STATE LEGISLATIVE DISTRICT OUTLINE MAP (CENSUS 2000)

35 962633N
81 357295W

35 962633N
81 354889W



GEOGRAPHIC AREAS LEGEND

SYMBOL	NAME STYLE
*****	INTERNATIONAL
*****	AIR (FEDERAL)
◇◇◇◇◇	SDA/SA
◇◇◇◇◇	TRIBAL SUBDIVISION
///////	STATE
	COUNTY
□□□□□	MINOR CIVIL DIV. ¹
■	Incorporated Place ¹
■	Census Designated Place ¹
—	Voting District ²
●●●●●	SLD-Senate
▲▲▲▲▲	SLD-House
■	Military
■	Inset
■	Out Area

Abbreviation Reference: AIR - American Indian Reservation; SDA/SA - State Designated American Indian Statistical Area; Tribal Subdivision - American Indian Tribal Subdivision

1 A * * following a place name indicates that the place is coterminous with a MCD. A * * indicates that the place is also a false MCD. In both cases, the MCD name is shown only when it differs from the place name.

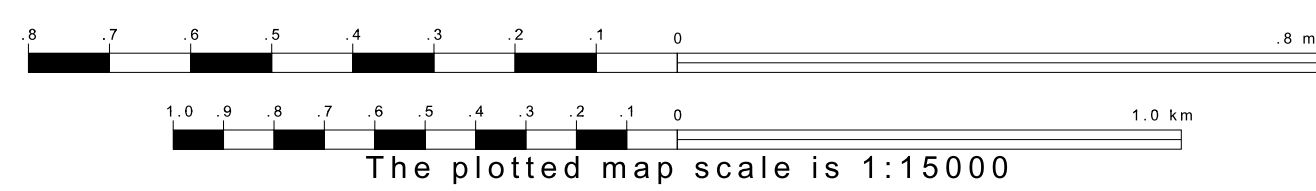
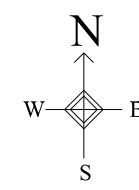
2 A * * following a VTD code indicates an actual voting district. Its absence indicates that the VTD is a pseudo-voting district or no information is available as to its status.

Voting Districts

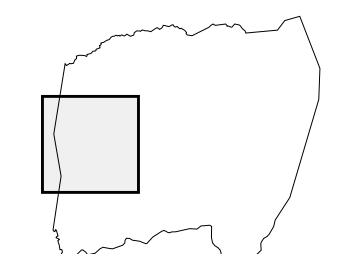
Code	Name
E*	Ellendale Voting District
B1*	Bethlehem 1 Voting District
B2*	Bethlehem 2 Voting District
LR*	Little River Voting District

35 963052N
81 357295W

35 963052N
81 354889W



Sheet Location within County



Key to Adjacent Sheets

1	2
4	5
7	8

ST: North Carolina (37)
COU: Alexander (003)
SHEET 4 OF 9 PARENT SHEETS

