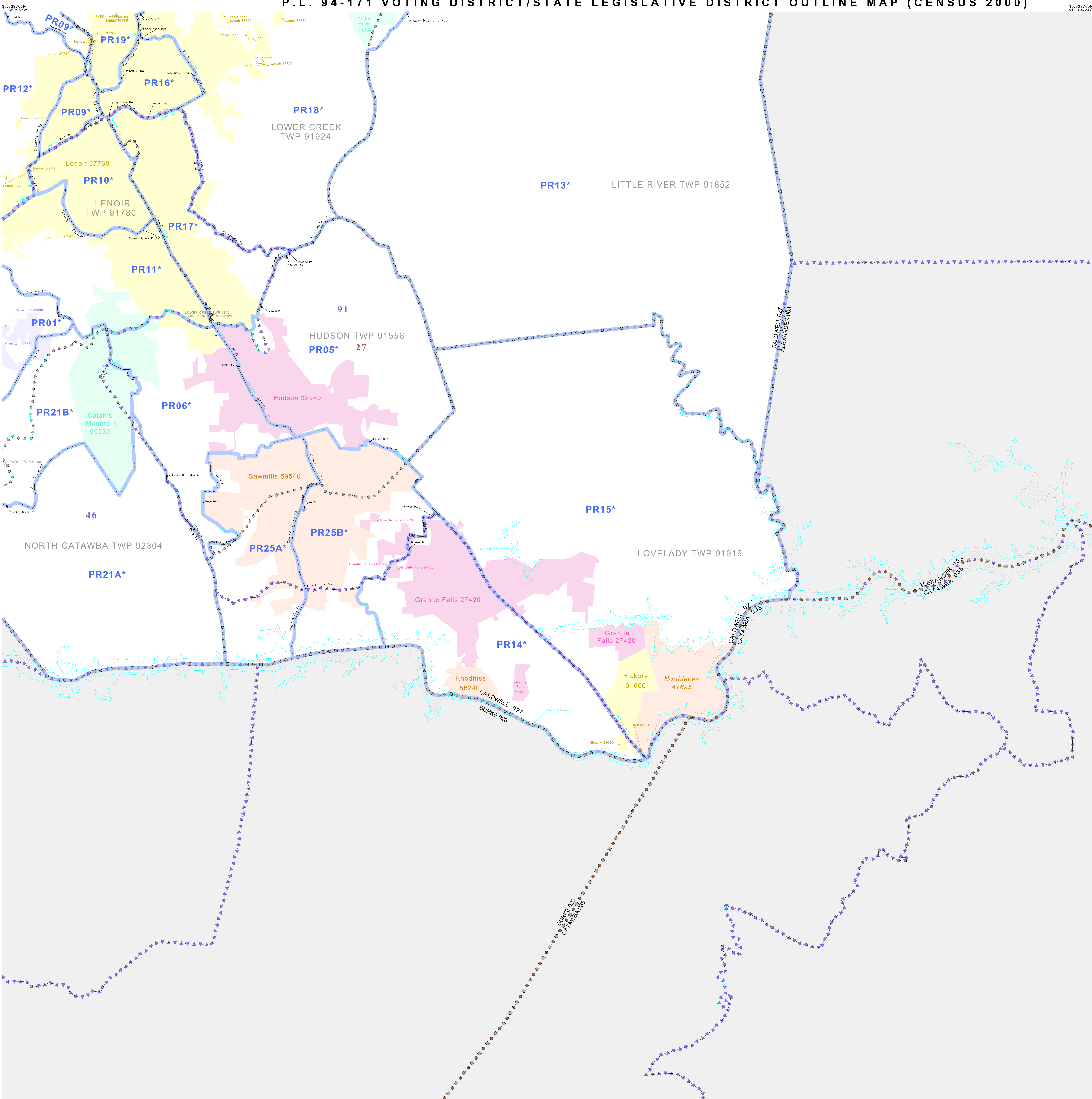


P.L. 94-171 VOTING DISTRICT/STATE LEGISLATIVE DISTRICT OUTLINE MAP (CENSUS 2000)

35 939760N
81.243424W



GEOGRAPHIC AREAS LEGEND

SYMBOL	NAME STYLE
*****	INTERNATIONAL
*****	AIR (FEDERAL)
*****	SDA/SA
*****	TRIBAL SUBDIVISION
//////	STATE
	COUNTY
	MINOR CIVIL DIV. ¹
	Incorporated Place ¹
	Census Designated Place ¹
—————	Voting District ²
—————	SLD-Senate
—————	SLD-House
—————	Military
Inset	Inset
Out Area	Out Area

Abbreviation Reference: AIR - American Indian Reservation; SDA/SA - State Designated American Indian Statistical Area; Tribal Subdivision - American Indian Tribal Subdivision

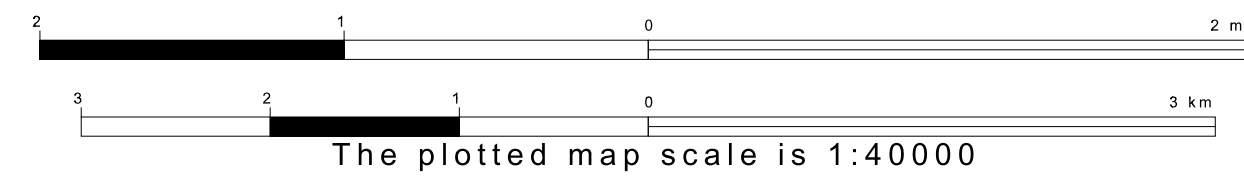
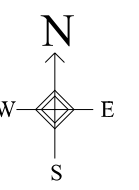
1 A * * Following a place name indicates that the place is coterminous with a MCD. A * indicates that the place is also a false MCD. In both cases, the MCD name is shown only when it differs from the place name.

2 A * * Following a VTD code indicates an actual voting district. Its absence indicates that the VTD is a pseudo-voting district or no information is available as to its status.

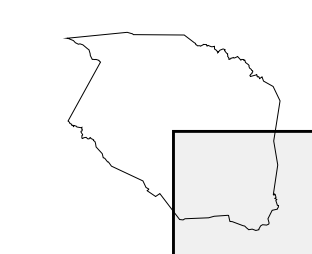
Voting Districts

Code	Name
PR01*	Gamewell 1 Voting District
PR02*	Hudson 1 Voting District
PR03*	Hudson 2 Voting District
PR04*	Lenoir 1 Voting District
PR05*	Lenoir 2 Voting District
PR06*	Lenoir 3 Voting District
PR07*	Lenoir 4 Voting District
PR08*	Little River Voting District
PR09*	Lower Creek 1 Voting District
PR10*	Lower Creek 2 Voting District
PR11*	Lower Creek 3 Voting District
PR12*	Lower Creek 4 Voting District
PR13*	North Catawba 1 Voting District
PR14*	North Catawba 2 Voting District
PR15*	Sawmills 1 Voting District
PR16*	Sawmills 2 Voting District
PR17*	Sawmills 3 Voting District
PR18*	Sawmills 4 Voting District
PR19*	Sawmills 5 Voting District
PR20*	Sawmills 6 Voting District
PR21*	Sawmills 7 Voting District
PR22*	Sawmills 8 Voting District
PR23*	Sawmills 9 Voting District
PR24*	Sawmills 10 Voting District
PR25*	Sawmills 11 Voting District
PR25A*	Sawmills 12 Voting District
PR25B*	Sawmills 13 Voting District

35 674212N
81.243424W



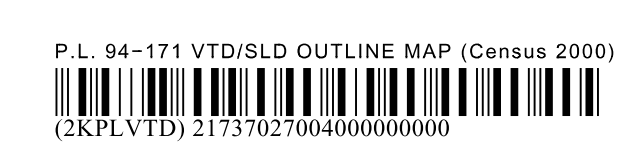
Sheet Location within County



Key to Adjacent Sheets

1	2
3	4

ST: North Carolina (37)
COU: Caldwell (027)
SHEET 4 OF 4 PARENT SHEETS



All legal boundaries and names are as of January 1, 2000. The boundaries shown on this map are for Census Bureau statistical data collection and tabulation purposes only; their depiction and designation for statistical purposes does not constitute a determination of jurisdictional authority or rights of ownership or entitlement. U.S. DEPARTMENT OF COMMERCE Economics and Statistics Administration U.S. Census Bureau