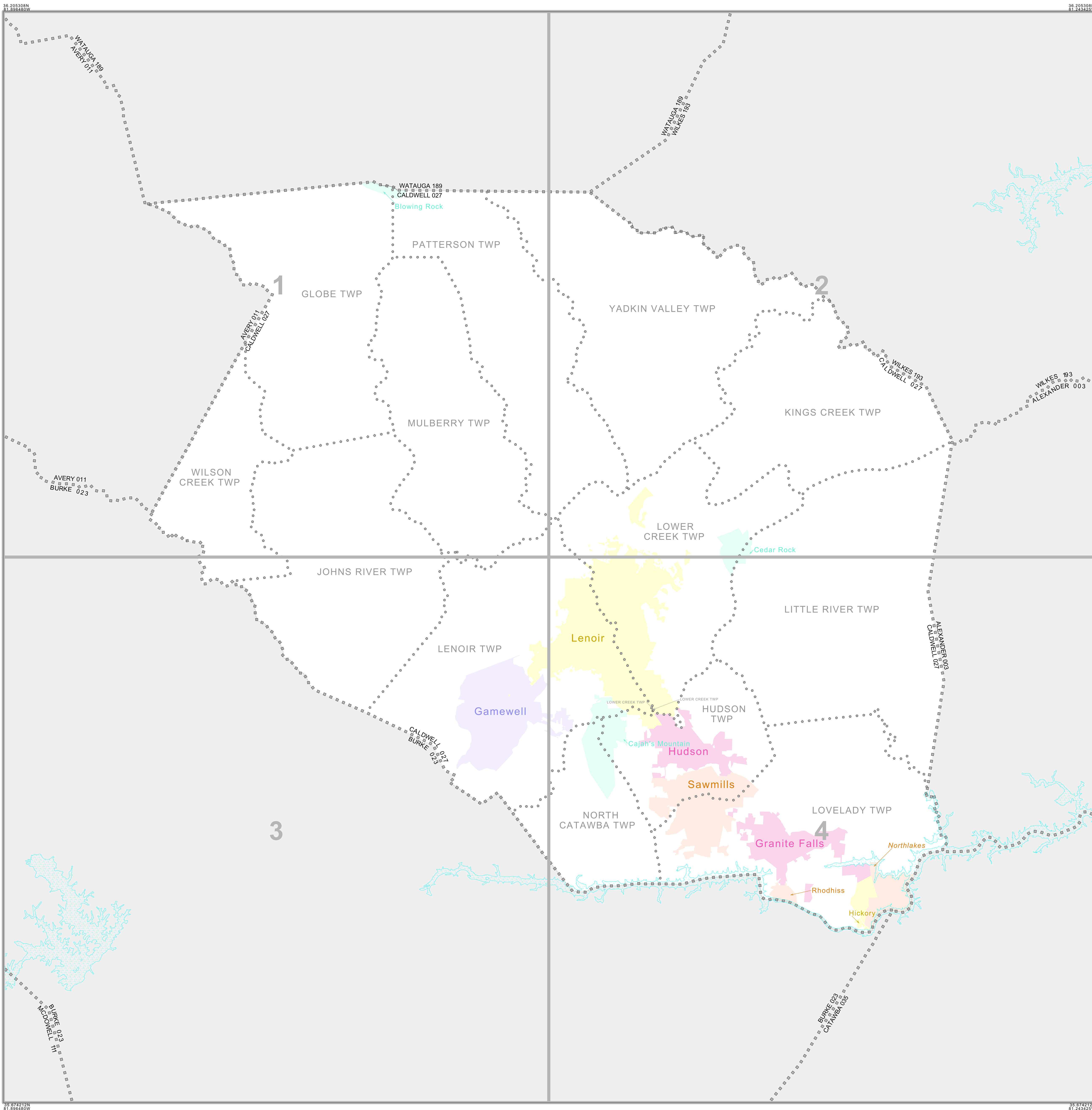


INDEX FOR P.L. 94-171 VOTING DISTRICT/STATE LEGISLATIVE DISTRICT OUTLINE MAP (CENSUS 2000)



INDEX MAP LEGEND

SYMBOL	NAME STYLE
*****	INTERNATIONAL
-----	AIR (FEDERAL)
-----	Trust Land/HHL
-----	OTSA/ANVSA/TDSA
-----	TRIBAL SUBDIVISION
-----	AIR (State)
-----	SDA/SA
-----	ANRC
	STATE
	COUNTY
o-o-o-o-o	MINOR CIVIL DIV. 1
o-o-o-o-o	Consolidated City
o-o-o-o-o	Incorporated Place 1
o-o-o-o-o	Census Designated Place 1
[Inset]	Inset
[Out Area]	Out Area

Abbreviation Reference: AIR = American Indian Reservation; Trust Land = Off-Reservation Trust Land; ANRC = Alaska Native Regional Corporation; TDSA = Tribal Designated Statistical Area; Tribal Subdivision = American Indian Tribal Subdivision; SDA/SA = State Designated American Indian Statistical Area; ANRC = Alaska Native Regional Corporation

1 A * * following a place name indicates that the place is coextensive with a MCD. A * * indicates that the place is also a false MCD. In both cases, the MCD name is shown only when it differs from the place name.

P.L. 94-171 VOTING DISTRICT/STATE LEGISLATIVE DISTRICT OUTLINE MAP (CENSUS 2000)

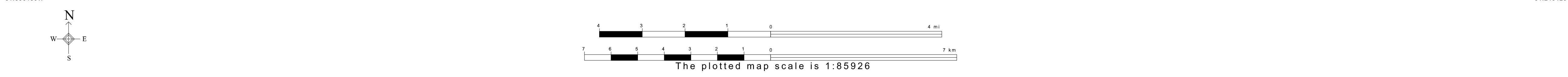
SYMBOL DESCRIPTION	SYMBOL	NAME STYLE
International	*****	CANADA
American Indian Reservation (Federal)	*****	L'ANSE RES (1880)
Off-Reservation Trust Land, Hawaiian Home Land	*****	T1880
Oklahoma Tribal Statistical Area, Alaska Native Village Statistical Area, Tribal Designated Statistical Area	o-o-o-o-o	KAW OTSA (5340)
American Indian Tribal Subdivision	o-o-o-o-o	SHONTO (620)
American Indian Reservation (State)	o-o-o-o-o	Tama Res (4125)
State Designated American Indian Statistical Area	o-o-o-o-o	Lumbee (9815)
Alaska Native Regional Corporation	o-o-o-o-o	NANA ANRC 52120
State or Statistically Equivalent Entity	o-o-o-o-o	NEW YORK 36
County or Statistically Equivalent Entity	o-o-o-o-o	ERIE 029
Minor Civil Division (MCD) 1	o-o-o-o-o	PIKE TWP 59742
Census County Division (CCD)	o-o-o-o-o	KULA CCD 91890
Consolidated City	o-o-o-o-o	Milford 47500
Incorporated Place 1	o-o-o-o-o	Rome 63418
Census Designated Place (CDP) 1	o-o-o-o-o	Zena 84187
Voting District (VTD) 2	o-o-o-o-o	141*
State Legislative District - Senate (SLD-Senate)	o-o-o-o-o	072
State Legislative District - House (SLD-House)	o-o-o-o-o	023

FEATURE	SYMBOL	FEATURE	SYMBOL
All Roads	--- Main St ---	Perennial Stream of Shoreline	~~~~~ Tumbling Cr. ~~~~~
Railroad	--- Southern RR ---	Intermittent Stream of Shoreline	~~~~~ Flory Cr. ~~~~~
Pipeline or Power Line	--- ---	Large River or Lake	~~~~~ Pleasant Lake ~~~~~
Ridge, Fence, or Other Physical Feature	--- ---	Glacier	~~~~~ Boring Glacier ~~~~~
Nonvisible Boundary or Feature Not Elsewhere Classified	--- ---	Military Installation	~~~~~ Fort Belvoir ~~~~~
Inset Area	[A]	Outside Subject Area	[]

Where international, state, and/or county boundaries coincide, the map shows the boundary symbol for only the highest-ranking of these boundaries.

1 A * * following a place name indicates that the place is coextensive with a MCD. A * * following an incorporated place name indicates that the place is also a false MCD. In both cases, the MCD name is shown only when it differs from the place name.

2 A * * following a VTD code indicates an actual voting district. Its absence indicates that the VTD is a pseudo voting district or no information is available as to its status.



ST: North Carolina (37)
 COU: Caldwell (027)
 INDEX MAP (TOTAL PARENT SHEETS 4 TOTAL INSET SHEETS 0)

