

P.L. 94-171 VOTING DISTRICT OUTLINE MAP (CENSUS 2000)

34 915107N
103 249926W

34 915107N
102 784592W

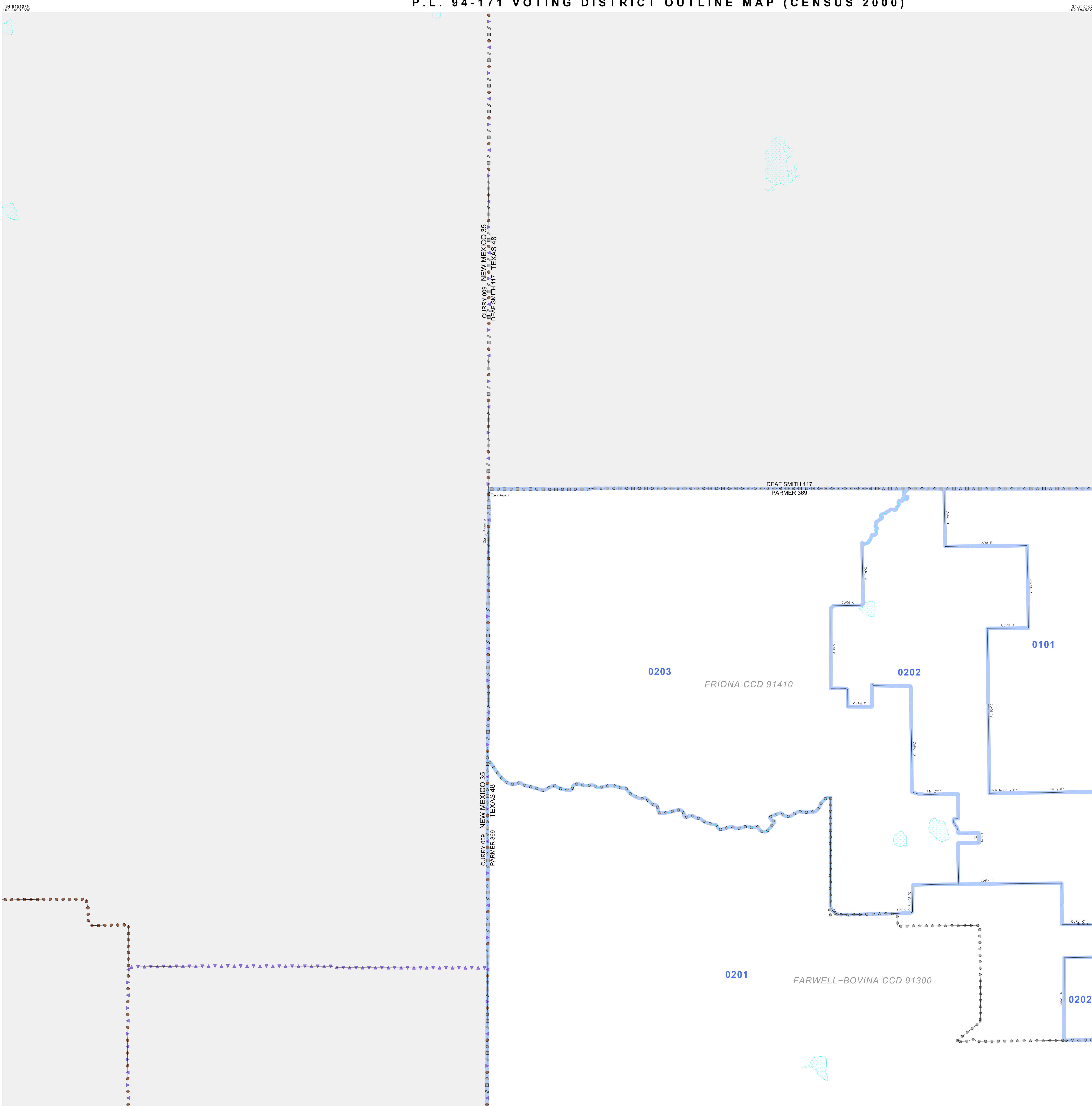
GEOGRAPHIC AREAS LEGEND

SYMBOL	NAME STYLE
*****	INTERNATIONAL
*****	AIR (FEDERAL)
*****	Trust Land
//////	STATE
	COUNTY
-----	CENSUS COUNTY DIV.
-----	Incorporated Place
-----	Census Designated Place
-----	Voting District
-----	Military
-----	Inset
-----	Out Area

Abbreviation Reference: AIR = American Indian Reservation; Trust Land = Off-Reservation Trust Land
 1 "A" following a VTD code indicates an actual voting district. Its absence indicates that the VTD is a pseudo voting district or no information is available as to its status.

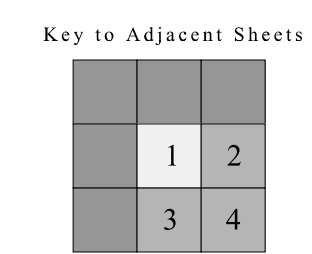
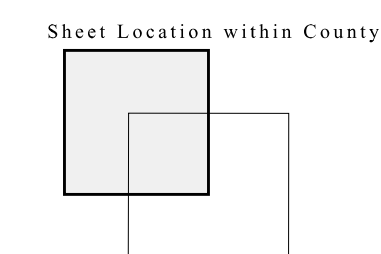
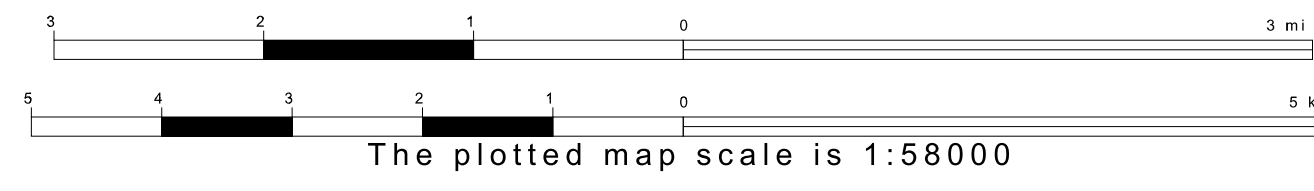
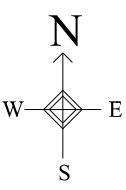
Voting Districts

Code	Name
0101	Voting District 0101
0201	Voting District 0201
0202	Voting District 0202
0203	Voting District 0203



34 529970N
103 249926W

34 529970N
102 784592W



ST: Texas (48)
 COU: Parmer (369)
 SHEET 1 OF 4 PARENT SHEETS

All legal boundaries and names are as of January 1, 2000. The boundaries shown on this map are for Census Bureau statistical data collection and tabulation purposes only; their depiction and designation for statistical purposes does not constitute a determination of jurisdictional authority or rights of ownership or entitlement. U.S. DEPARTMENT OF COMMERCE Economics and Statistics Administration U.S. Census Bureau

