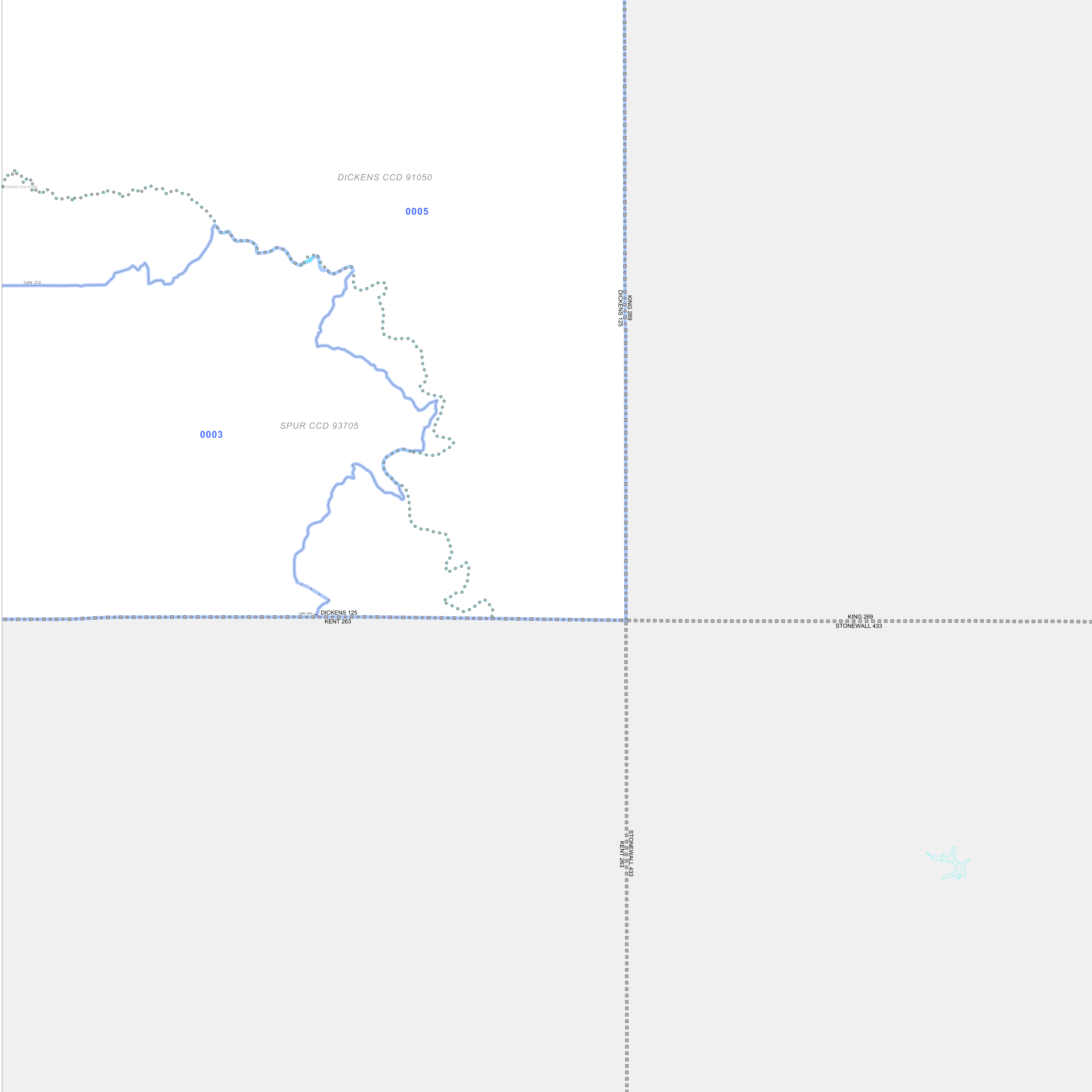


P.L. 94-171 VOTING DISTRICT OUTLINE MAP (CENSUS 2000)

33 816428N
100 779303W

33 816428N
100 318926W



GEOGRAPHIC AREAS LEGEND

SYMBOL	NAME STYLE
*****	INTERNATIONAL
*****	AIR (FEDERAL)
*****	Trust Land
//////	STATE
	COUNTY
o-o-o-o	CENSUS COUNTY DIV.
Yellow	Incorporated Place
Pink	Census Designated Place
Blue	Voting District
Blue with stars	Military
Inset	Inset
Out Area	Out Area

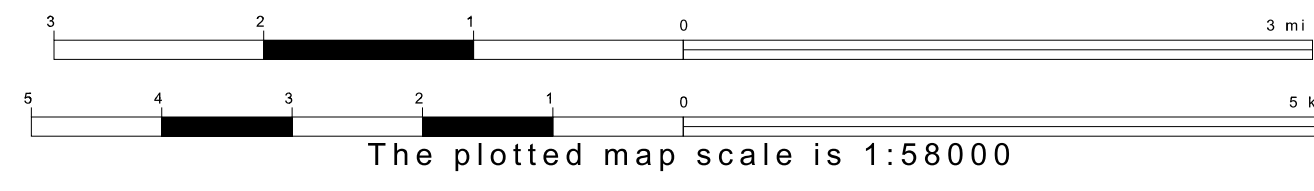
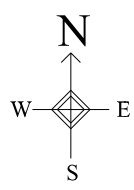
Abbreviation Reference: AIR - American Indian Reservation; Trust Land - Off-Reservation Trust Land
 1 & " following a VTD code indicates an actual voting district. Its absence indicates that the VTD is a pseudo voting district or no information is available as to its status.

Voting Districts

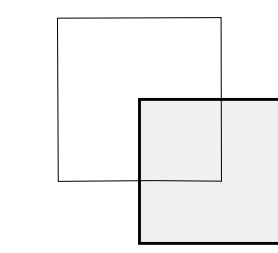
Code	Name
0003	Voting District 0003
0005	Voting District 0005

33 231234N
100 779303W

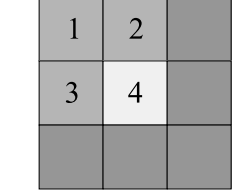
33 231234N
100 318926W



Sheet Location within County



Key to Adjacent Sheets



ST: Texas (48)
 COU: Dickens (125)
 SHEET 4 OF 4 PARENT SHEETS