

Drinking Places (Alcoholic Beverages) NAICS 722410

*Economic Census Facts:

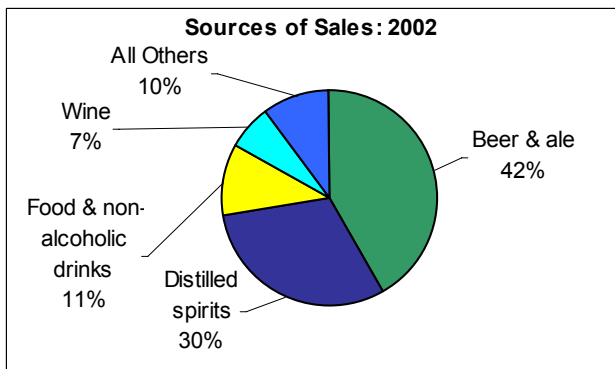
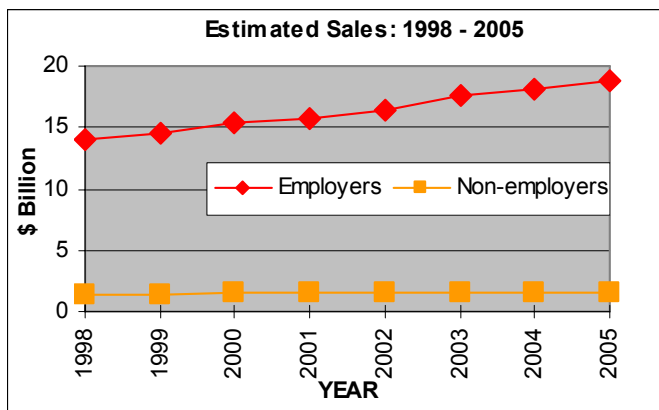
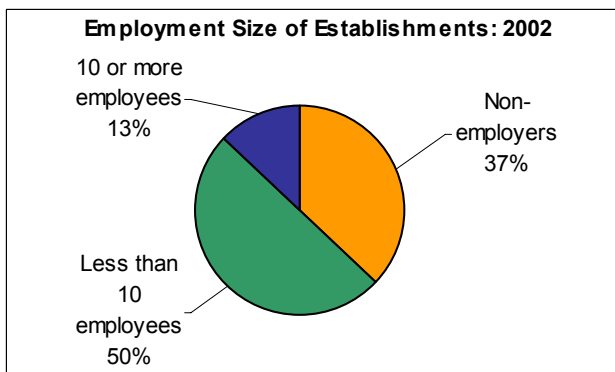
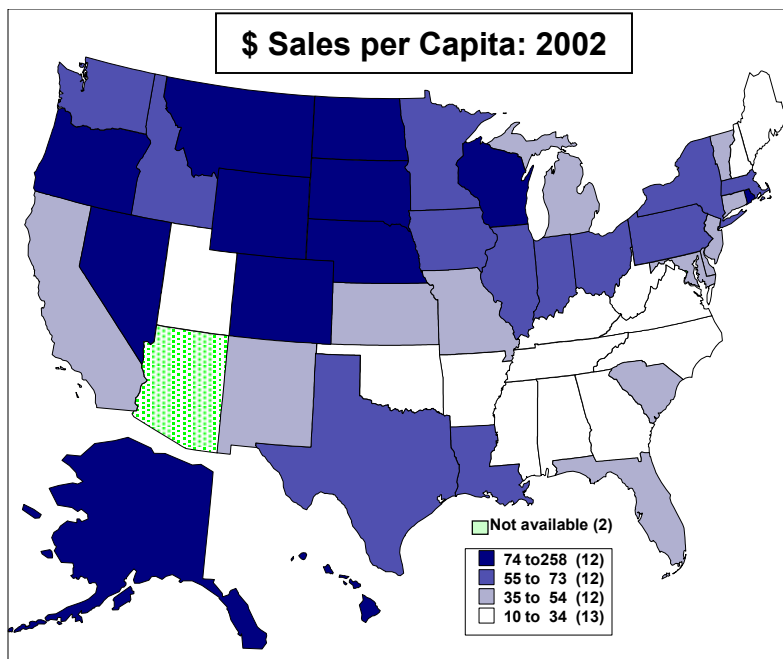
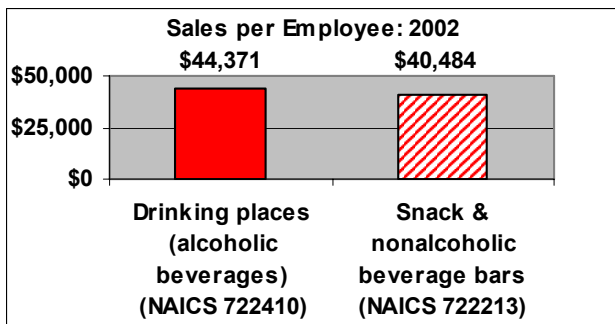
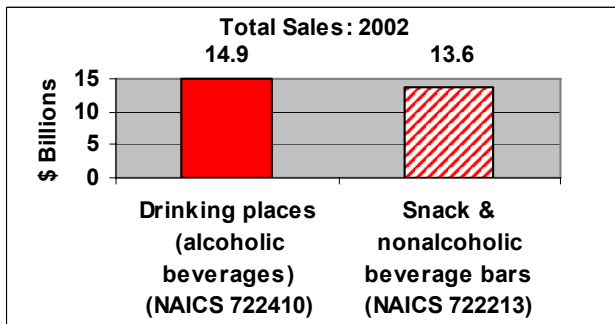
	2002	1997
Sales (Bil \$)	\$14.9	\$12.3
Payroll (Bil \$)	\$3.4	\$2.7
Establishments	48,856	52,825
Employees	335,837	321,294

DID YOU KNOW?

Montana had the highest per capita sales at drinking places.

\$258

versus the national average \$52.



business.census.gov

* Unless otherwise noted, includes only employer establishments.



OFFICIAL 5 YEAR MEASURE OF AMERICAN BUSINESS