

P.L. 94-171 VOTING DISTRICT OUTLINE MAP (CENSUS 2000)

35 311907N
102 395649W

35 311907N
101 976243W

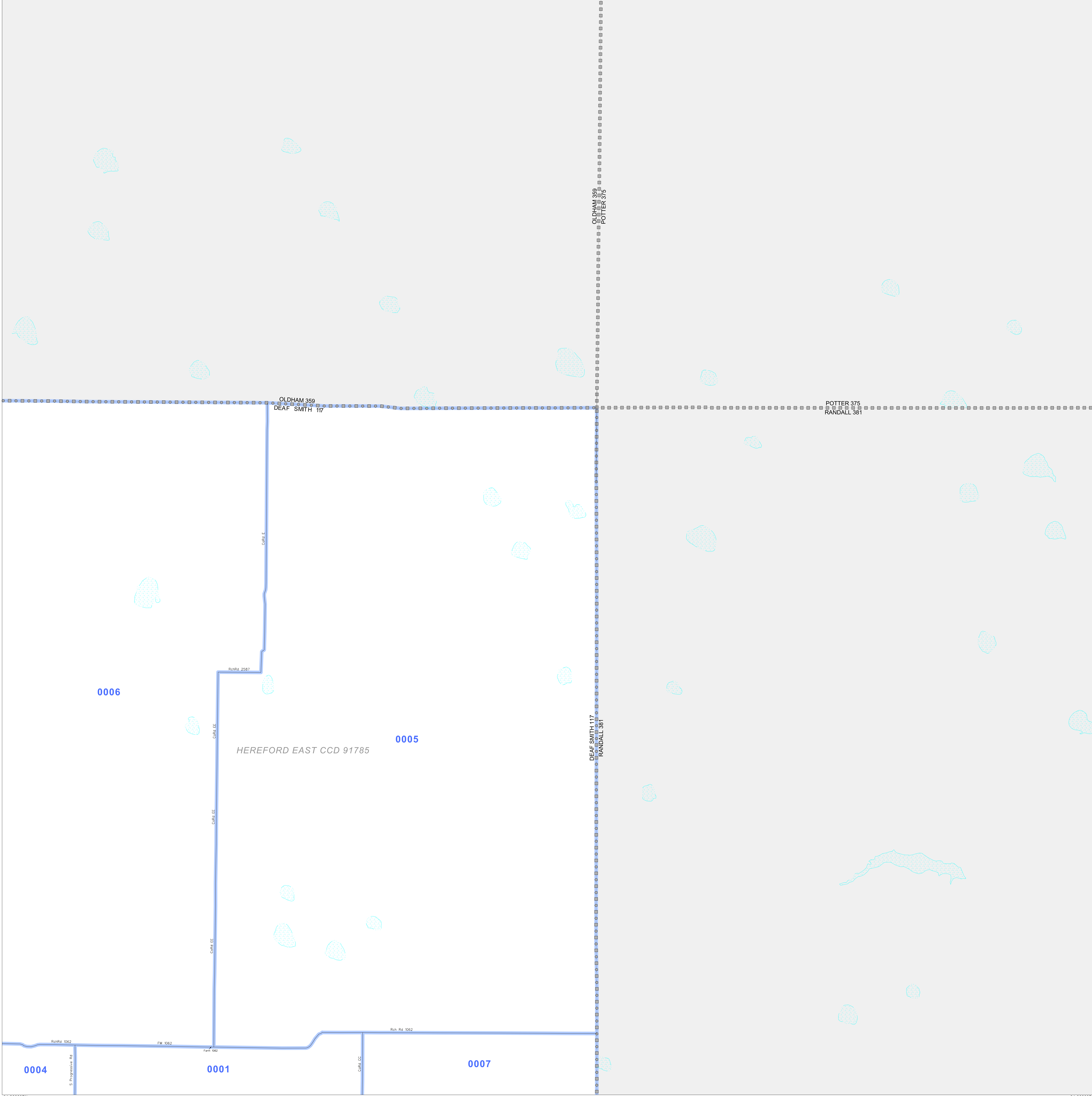
GEOGRAPHIC AREAS LEGEND

SYMBOL	NAME STYLE
*****	INTERNATIONAL
*****	AIR (FEDERAL)
*****	Trust Land
//////	STATE
	COUNTY
o-o-o-o	CENSUS COUNTY DIV.
Yellow	Incorporated Place
Pink	Census Designated Place
Blue	Voting District
Military	Military
Inset	Inset
Out Area	Out Area

Abbreviation Reference: AIR = American Indian Reservation; Trust Land = Off-Reservation Trust Land
 1 "A" following a VTD code indicates an actual voting district. Its absence indicates that the VTD is a pseudo voting district or no information is available as to its status.

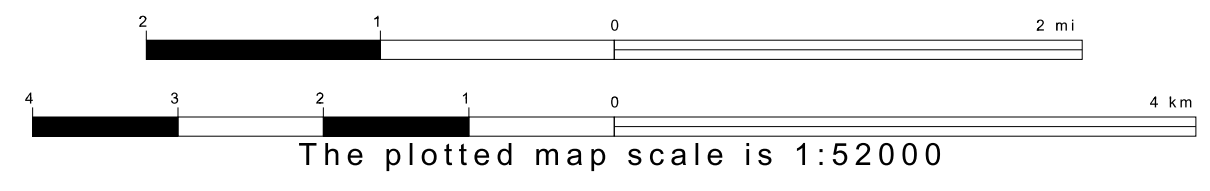
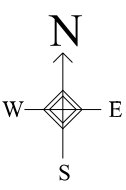
Voting Districts

Code	Name
0001	Voting District 0001
0004	Voting District 0004
0005	Voting District 0005
0006	Voting District 0006
0007	Voting District 0007

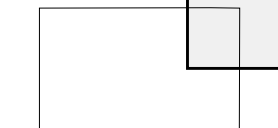


34 966637N
102 395649W

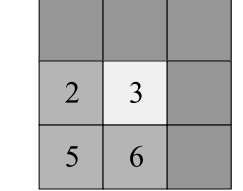
34 966637N
101 976243W



Sheet Location within County



Key to Adjacent Sheets



ST: Texas (48)
 COU: Deaf Smith (117)
 SHEET 3 OF 6 PARENT SHEETS

All legal boundaries and names are as of January 1, 2000. The boundaries shown on this map are for Census Bureau statistical data collection and tabulation purposes only; their depiction and designation for statistical purposes does not constitute a determination of jurisdictional authority or rights of ownership or entitlement. U.S. DEPARTMENT OF COMMERCE Economics and Statistics Administration U.S. Census Bureau

