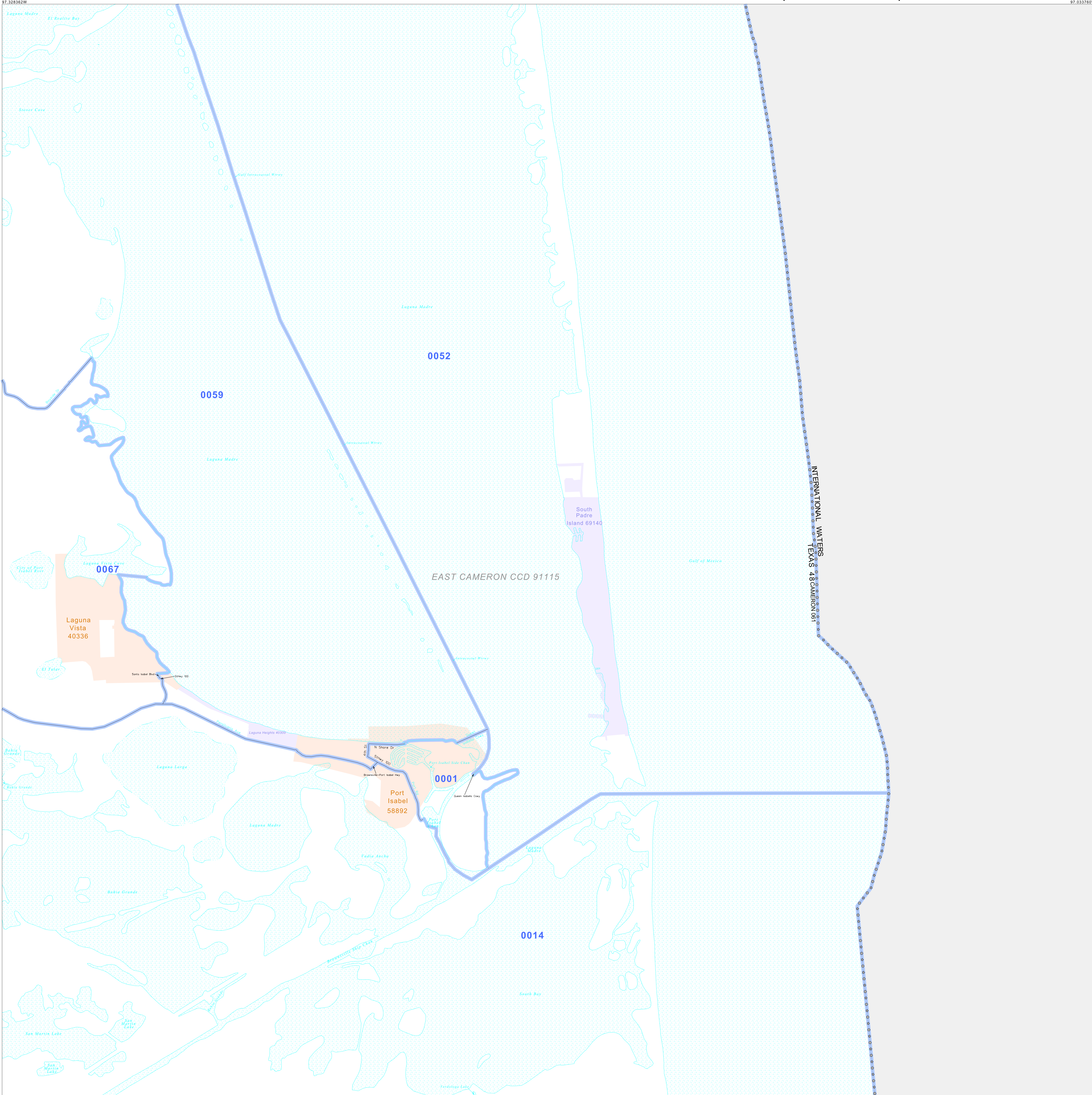


P.L. 94-171 VOTING DISTRICT OUTLINE MAP (CENSUS 2000)

26 258221N  
97 328352W

26 258221N  
97 033760W



**GEOGRAPHIC AREAS LEGEND**

SYMBOL	NAME STYLE
*****	INTERNATIONAL
*****	AIR (FEDERAL)
*****	Trust Land
*****	STATE
*****	COUNTY
*****	CENSUS COUNTY DIV.
*****	Incorporated Place
*****	Census Designated Place
*****	Voting District
*****	Military
*****	Inset
*****	Out Area

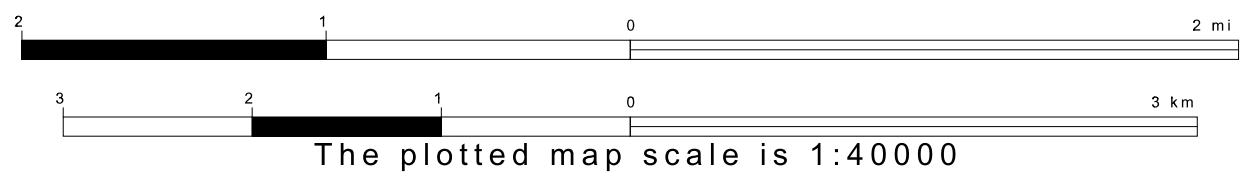
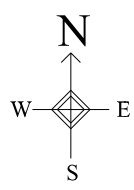
Abbreviation Reference: AIR = American Indian Reservation; Trust Land = Off-Reservation Trust Land  
 1. A "\*" following a VTD code indicates an actual voting district. Its absence indicates that the VTD is a pseudo voting district or no information is available as to its status.

**Voting Districts**

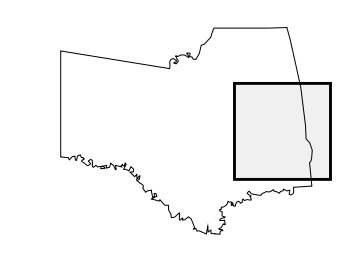
Code	Name
0001	Voting District 0001
0014	Voting District 0014
0052	Voting District 0052
0059	Voting District 0059
0067	Voting District 0067

26 092265N  
97 328352W

26 092265N  
97 033760W



Sheet Location within County



Key to Adjacent Sheets

2	3
5	6
8	9

ST: Texas (48)  
 COU: Cameron (061)  
 SHEET 6 OF 9 PARENT SHEETS



All legal boundaries and names are as of January 1, 2000. The boundaries shown on this map are for Census Bureau statistical data collection and tabulation purposes only; their depiction and designation for statistical purposes does not constitute a determination of jurisdictional authority or rights of ownership or entitlement. U.S. DEPARTMENT OF COMMERCE Economics and Statistics Administration U.S. Census Bureau