

P.L. 94-171 VOTING DISTRICT OUTLINE MAP (CENSUS 2000)

36 278199N
101.335305W

36 278199N
100.815861W

GEOGRAPHIC AREAS LEGEND

SYMBOL	NAME STYLE
*****	INTERNATIONAL
*****	AIR (FEDERAL)
*****	Trust Land
//////	STATE
	COUNTY
-----	CENSUS COUNTY DIV.
-----	Incorporated Place
-----	Census Designated Place
-----	Voting District
-----	Military
-----	Inset
-----	Out Area

Abbreviation Reference: AIR = American Indian Reservation; Trust Land = Off-Reservation Trust Land
 1. A "*" following a VTD code indicates an actual voting district. Its absence indicates that the VTD is a pseudo voting district or no information is available as to its status.

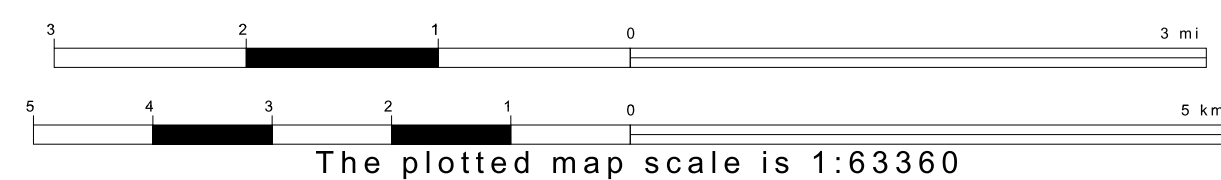
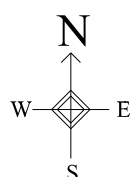
Voting Districts

Code	Name
0002	Voting District 0002
0003	Voting District 0003
0004	Voting District 0004

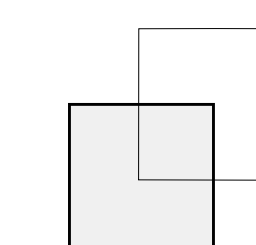


36 857904N
101.335305W

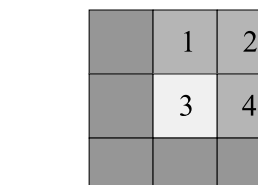
36 857904N
100.815861W



Sheet Location within County



Key to Adjacent Sheets



ST: Texas (48)
 COU: Ochiltree (357)
 SHEET 3 OF 4 PARENT SHEETS