

INDEX FOR P.L. 94-171 VOTING DISTRICT OUTLINE MAP (CENSUS 2000)

INDEX MAP LEGEND

SYMBOL	NAME STYLE
*****	INTERNATIONAL
-----	AIR (FEDERAL)
-----	Trust Land/HHL
-----	OTSA/ANVSA/TDSA
-----	TRIBAL SUBDIVISION
-----	AIR (State)
-----	SDA/ISA
-----	ANRC
	STATE
	COUNTY
o-o-o-o-o	MINOR CIVIL DIV.¹
o-o-o-o-o	Consolidated City
o-o-o-o-o	Incorporated Place¹
o-o-o-o-o	Census Designated Place¹
[Inset]	Inset
[Out Area]	Out Area

Abbreviation Reference: AIR = American Indian Reservation; Trust Land = Off-Reservation Trust Land; ANRC = Alaska Native Regional Corporation; TDSA = Tribal Designated Statistical Area; FSDSA = Federal Subdivision - American Indian Tribal Subdivision; SDA/ISA = State Designated American Indian Statistical Area; ANRC = Alaska Native Regional Corporation

¹ A "*" following a place name indicates that the place is coextensive with a MCD. A "-" indicates that the place is also a false MCD. In both cases, the MCD name is shown only when it differs from the place name.

P.L. 94-171 VOTING DISTRICT/STATE LEGISLATIVE DISTRICT OUTLINE MAP LEGEND (CENSUS 2000)

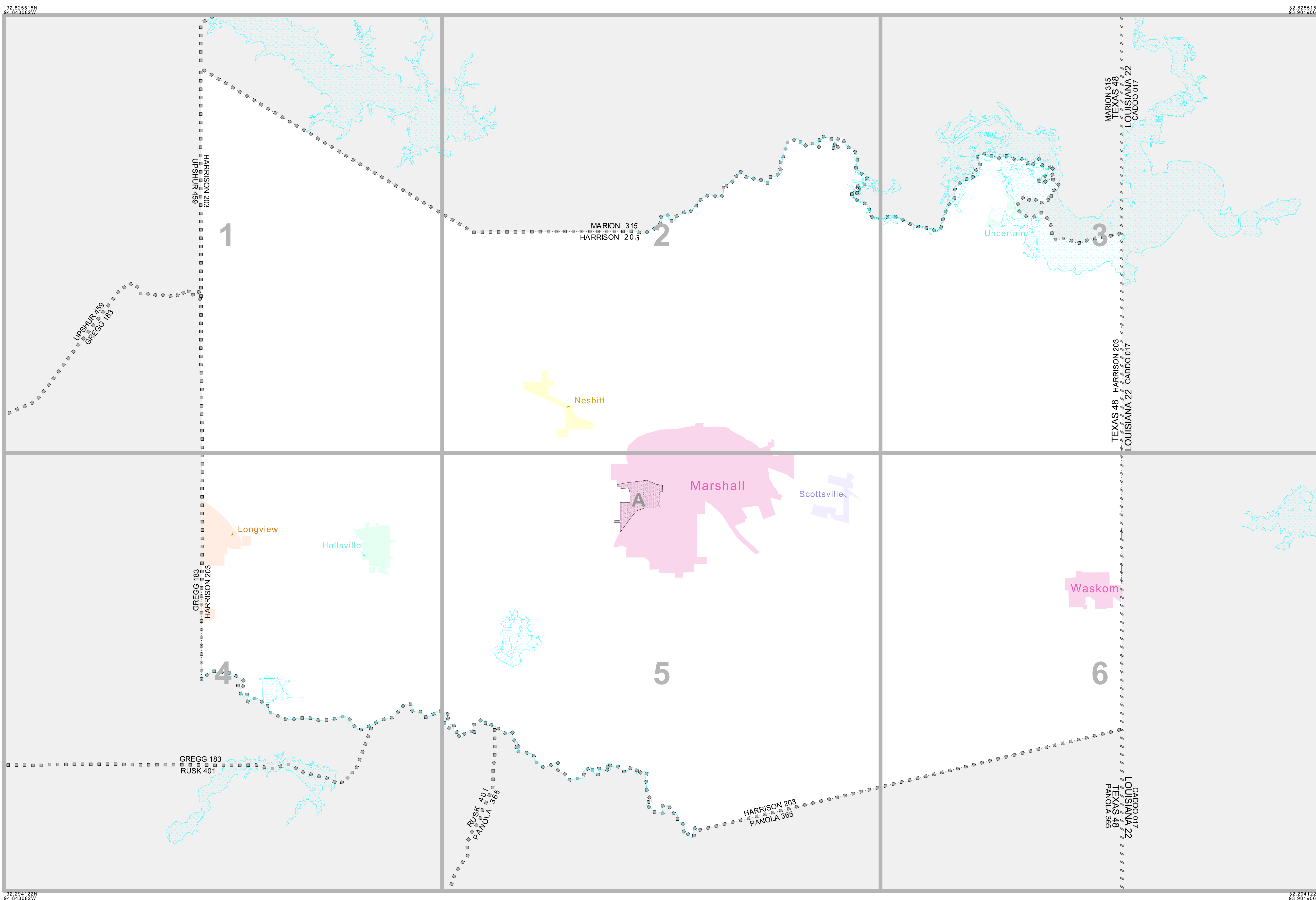
SYMBOL DESCRIPTION	SYMBOL	NAME STYLE
International	*****	CANADA
American Indian Reservation (Federal)	*****	L'ANSE RES (1880)
Off-Reservation Trust Land, Hawaiian Home Land	*****	T1880
Oklahoma Tribal Statistical Area, Alaska Native Village Statistical Area, Tribal Designated Statistical Area	o-o-o-o-o	KAW OTSA (5340)
American Indian Tribal Subdivision	o-o-o-o-o	SHONTO (620)
American Indian Reservation (State)	o-o-o-o-o	Tama Res (4125)
State Designated American Indian Statistical Area	o-o-o-o-o	Lumbee (9815)
Alaska Native Regional Corporation	o-o-o-o-o	NANA ANRC 52120
State or Statistically Equivalent Entity	o-o-o-o-o	NEW YORK 36
County or Statistically Equivalent Entity	o-o-o-o-o	ERIE 029
Minor Civil Division (MCD)¹	o-o-o-o-o	PIKE TWP 59742
Census County Division (CCD)	o-o-o-o-o	KULA CCD 91890
Consolidated City	o-o-o-o-o	Milford 47500
Incorporated Place¹	o-o-o-o-o	Rome 63418
Census Designated Place (CDP)¹	o-o-o-o-o	Zena 84187
Voting District (VTD)²	o-o-o-o-o	141*
State Legislative District - Senate (SLD-Senate)	o-o-o-o-o	072
State Legislative District - House (SLD-House)	o-o-o-o-o	023

FEATURE	SYMBOL	FEATURE	SYMBOL
All Roads	—	Personal Stream of Shoreline	~~~~~
Railroad	—+—+—+—	Intermittent Stream of Shoreline	~~~~~
Pipeline or Power Line	—+—+—+—	Large River or Lake	~~~~~
Ridge, Fence, or Other Physical Feature	—+—+—+—	Glacier	~~~~~
Nonvisible Boundary or Feature Not Elsewhere Classified	—+—+—+—	Military Installation	~~~~~
Inset Area	[A]	Outside Subject Area	[]

Where international, state, and/or county boundaries coincide, the map shows the boundary symbol for only the highest-ranking of these boundaries.

¹ A "*" following a place name indicates that the place is coextensive with a MCD. A "-" following an incorporated place name indicates that the place is also a false MCD. In both cases, the MCD name is shown only when it differs from the place name.

² A "*" following a VTD code indicates an actual voting district. Its absence indicates that the VTD is a pseudo voting district or no information is available as to its status.



The plotted map scale is 1:128889

