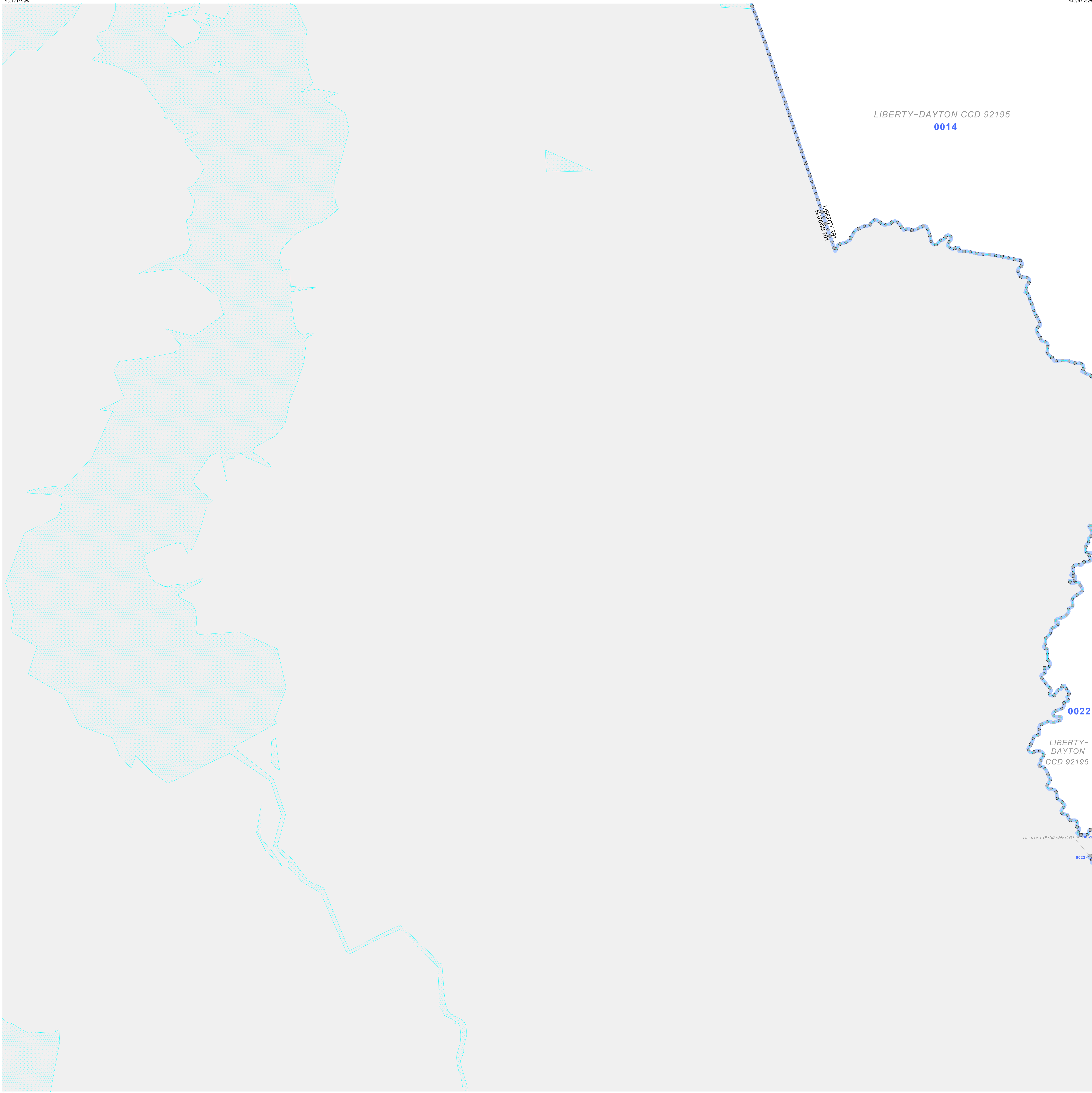


P.L. 94-171 VOTING DISTRICT OUTLINE MAP (CENSUS 2000)

30 029407N
95 17 1199W

30 029407N
94 08 7632W



GEOGRAPHIC AREAS LEGEND

SYMBOL	NAME STYLE
*****	INTERNATIONAL
*****	AIR (FEDERAL)
*****	Trust Land
//////	STATE
□□□□	COUNTY
○ ○ ○ ○	CENSUS COUNTY DIV.
■ ■ ■ ■	Incorporated Place
■ ■ ■ ■	Census Designated Place
■ ■ ■ ■	Voting District
■ ■ ■ ■	Military
■ ■ ■ ■	Inset
■ ■ ■ ■	Out Area

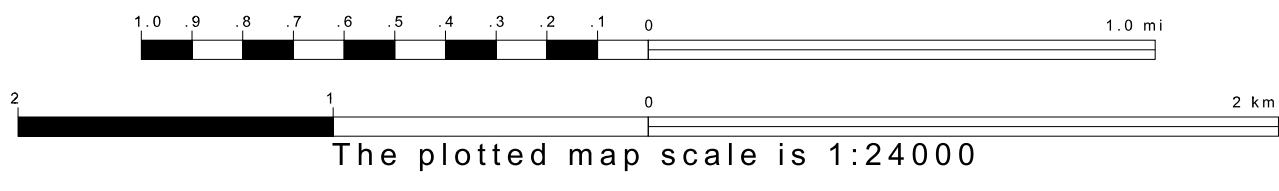
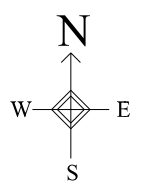
Abbreviation Reference: AIR - American Indian Reservation; Trust Land - Off-Reservation Trust Land
 1 " " following a VTD code indicates an actual voting district. Its absence indicates that the VTD is a pseudo voting district or no information is available as to its status.

Voting Districts

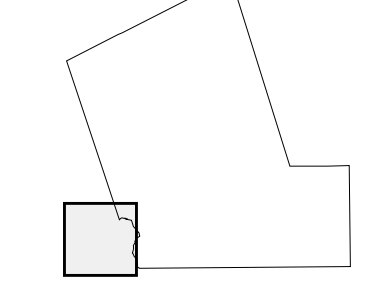
Code	Name
0014	Voting District 0014
0022	Voting District 0022

29 869930N
95 17 1199W

29 869930N
94 08 7632W



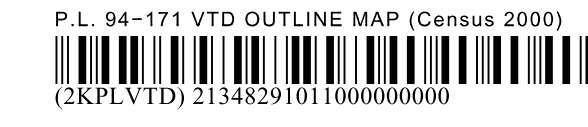
Sheet Location within County



Key to Adjacent Sheets



ST: Texas (48)
 COU: Liberty (291)
 SHEET 11 OF 14 PARENT SHEETS



All legal boundaries and names are as of January 1, 2000.
 The boundaries shown on this map are for Census Bureau statistical data collection and tabulation purposes only; their depiction and designation for statistical purposes does not constitute a determination of jurisdictional authority or rights of ownership or entitlement.
 U.S. DEPARTMENT OF COMMERCE Economics and Statistics Administration U.S. Census Bureau