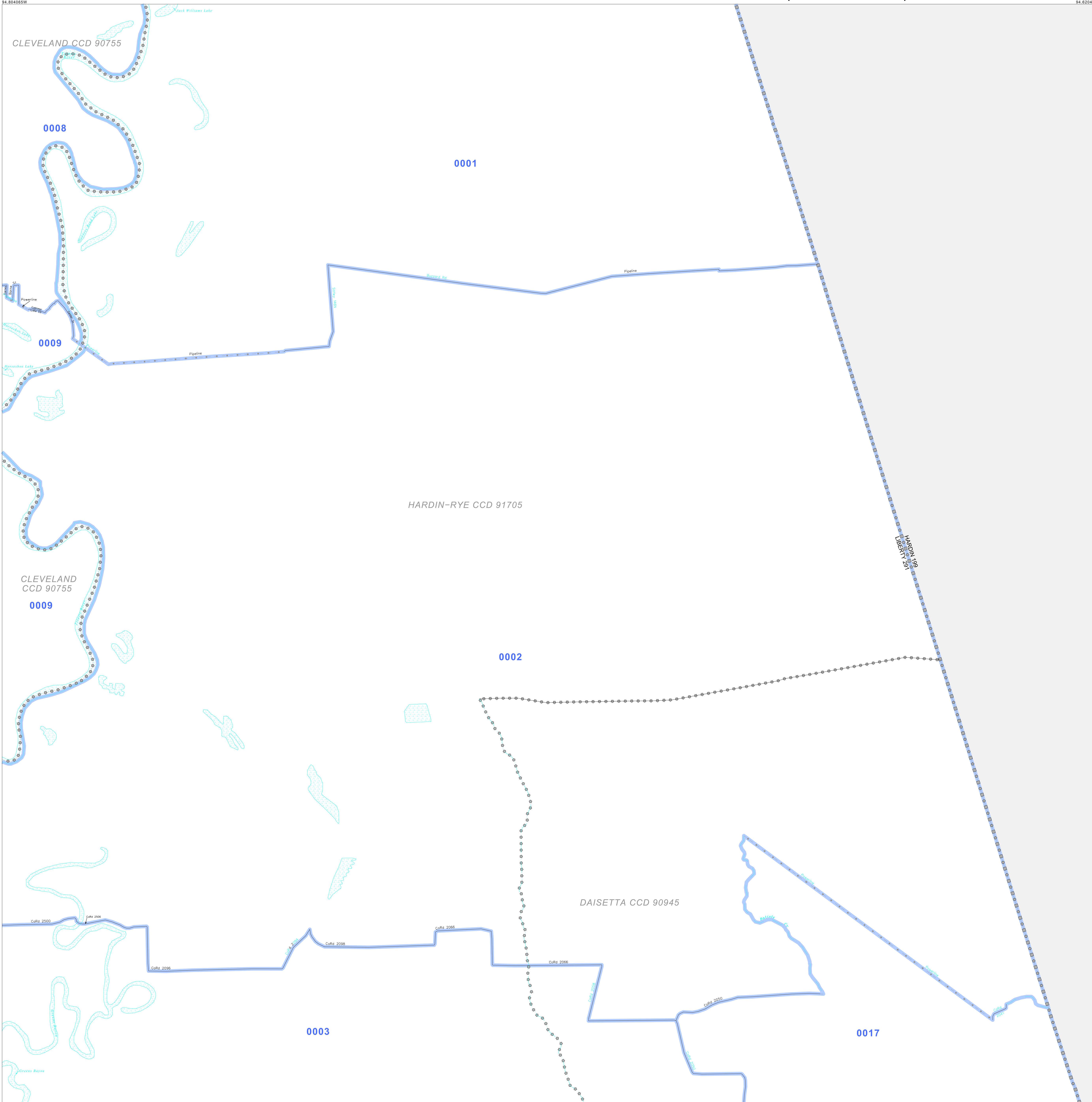


P.L. 94-171 VOTING DISTRICT OUTLINE MAP (CENSUS 2000)

30 348363N
94 804065W

30 348363N
94 620498W



GEOGRAPHIC AREAS LEGEND

SYMBOL	NAME STYLE
*****	INTERNATIONAL
*****	AIR (FEDERAL)
*****	Trust Land
//////	STATE
	COUNTY
o-o-o-o-o	CENSUS COUNTY DIV.
Yellow	Incorporated Place
Pink	Census Designated Place
Blue	Voting District
Military	Military
Inset	Inset
Out Area	Out Area

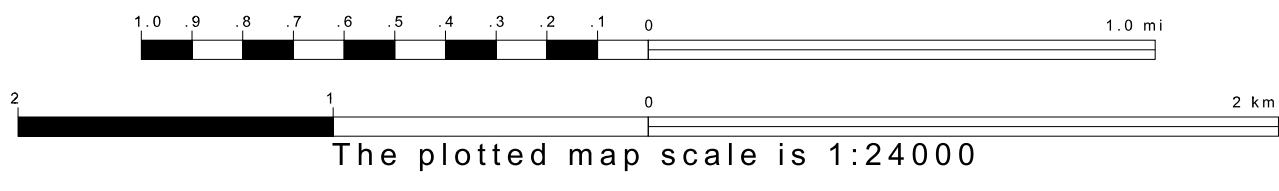
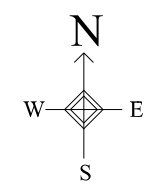
Abbreviation Reference: AIR = American Indian Reservation; Trust Land = Off-Reservation Trust Land
 1 "A" following a VTD code indicates an actual voting district. Its absence indicates that the VTD is a pseudo voting district or no information is available as to its status.

Voting Districts

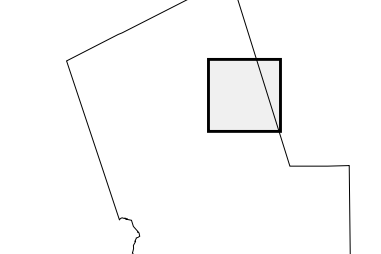
Code	Name
0001	Voting District 0001
0002	Voting District 0002
0003	Voting District 0003
0008	Voting District 0008
0009	Voting District 0009
0017	Voting District 0017

30 188858N
94 804065W

30 188858N
94 620498W



Sheet Location within County



Key to Adjacent Sheets

2	3
5	6
8	10

ST: Texas (48)
 COU: Liberty (291)
 SHEET 6 OF 14 PARENT SHEETS

