

P.L. 94-171 VOTING DISTRICT OUTLINE MAP (CENSUS 2000)

30 507841N
94 987632W

30 507841N
94 804069W

GEOGRAPHIC AREAS LEGEND

SYMBOL	NAME STYLE
*****	INTERNATIONAL
*****	AIR (FEDERAL)
*****	Trust Land
*****	STATE
*****	COUNTY
*****	CENSUS COUNTY DIV.
*****	Incorporated Place
*****	Census Designated Place
*****	Voting District
*****	Military
*****	Inset
*****	Out Area

Abbreviation Reference: AIR = American Indian Reservation; Trust Land = Off-Reservation Trust Land
 1. A "*" following a VTD code indicates an actual voting district. Its absence indicates that the VTD is a pseudo voting district or no information is available as to its status.

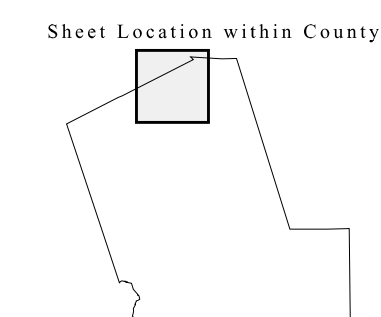
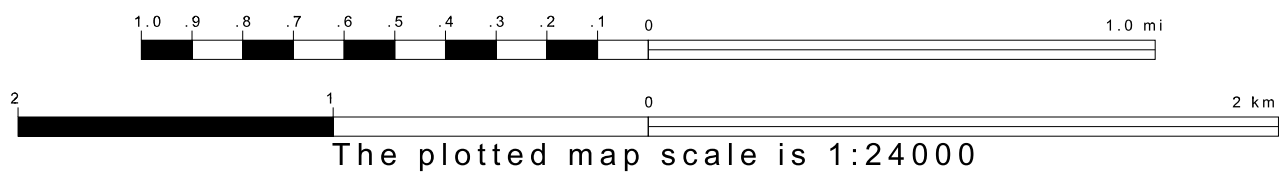
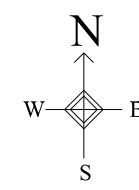
Voting Districts

Code	Name
0001	Voting District 0001
0008	Voting District 0008
0015	Voting District 0015
0016	Voting District 0016



30 348353N
94 987632W

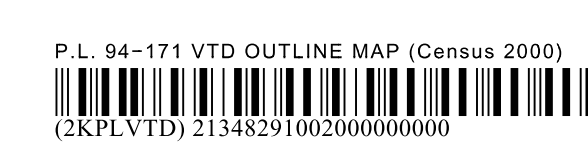
30 348353N
94 804069W



Key to Adjacent Sheets

1	2	3
4	5	6

ST: Texas (48)
 COU: Liberty (291)
 SHEET 2 OF 14 PARENT SHEETS



All legal boundaries and names are as of January 1, 2000. The boundaries shown on this map are for Census Bureau statistical data collection and tabulation purposes only; their depiction and designation for statistical purposes does not constitute a determination of jurisdictional authority or rights of ownership or entitlement. U.S. DEPARTMENT OF COMMERCE Economics and Statistics Administration U.S. Census Bureau