

P.L. 94-171 VOTING DISTRICT OUTLINE MAP (CENSUS 2000)

30 507841N
95.171199W

30 507841N
94.987632W

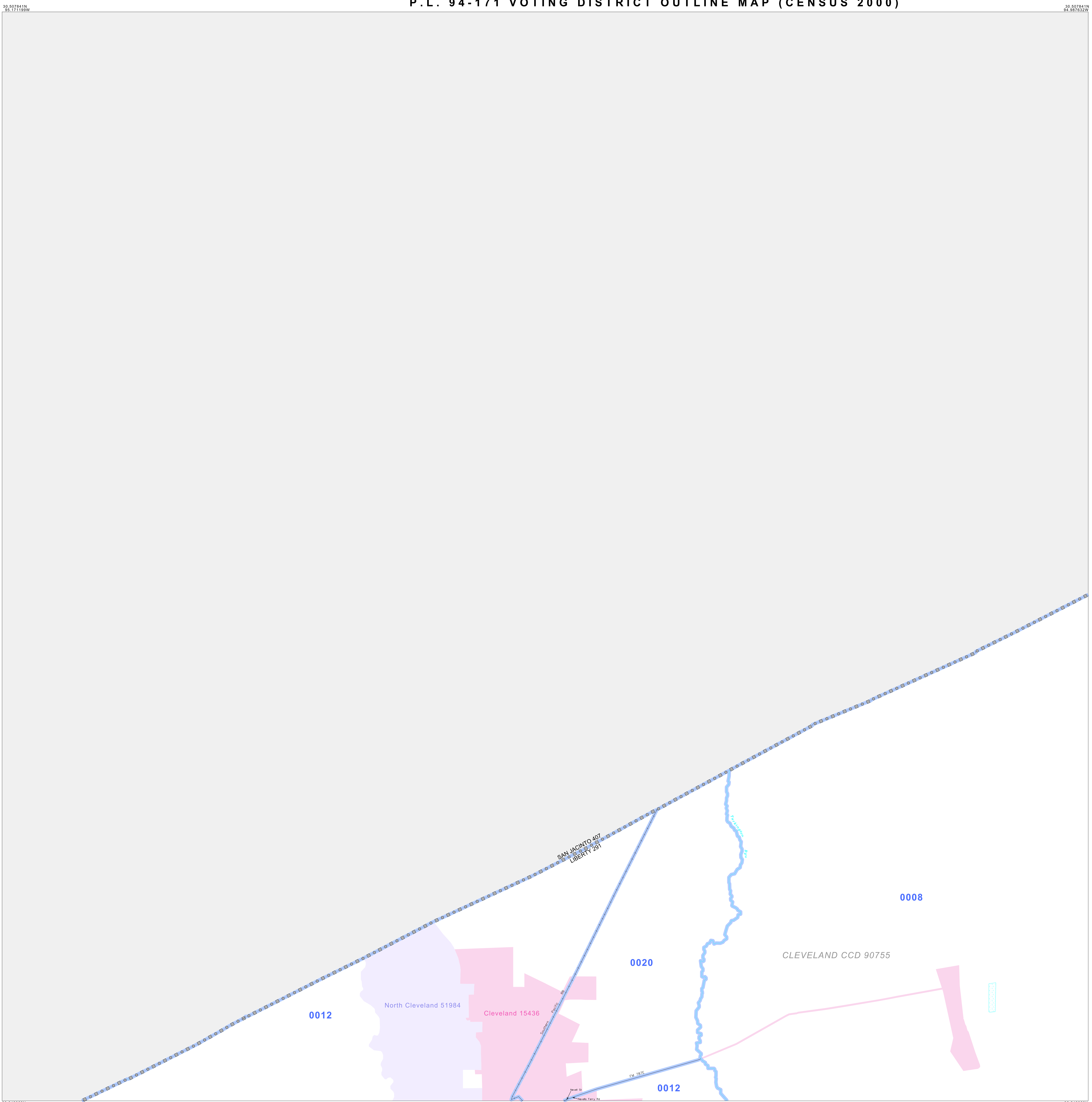
GEOGRAPHIC AREAS LEGEND

| SYMBOL | NAME STYLE |
|-----------|-------------------------|
| ***** | INTERNATIONAL |
| ***** | AIR (FEDERAL) |
| ***** | Trust Land |
| ////// | STATE |
| | COUNTY |
| o-o-o-o-o | CENSUS COUNTY DIV. |
| Yellow | Incorporated Place |
| Pink | Census Designated Place |
| Blue | Voting District |
| Military | Military |
| Inset | Inset |
| Out Area | Out Area |

Abbreviation Reference: AIR - American Indian Reservation; Trust Land - Off-Reservation Trust Land
 1. A "*" following a VTD code indicates an actual voting district. Its absence indicates that the VTD is a pseudo voting district or no information is available as to its status.

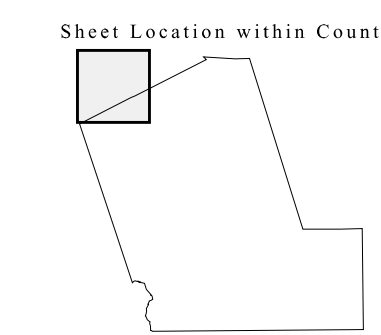
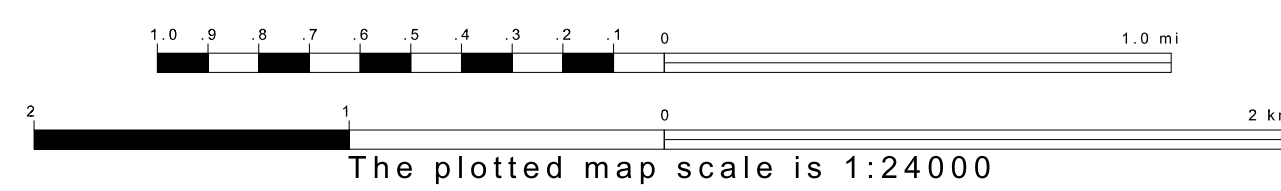
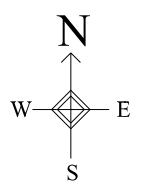
Voting Districts

| Code | Name |
|------|----------------------|
| 0008 | Voting District 0008 |
| 0012 | Voting District 0012 |
| 0020 | Voting District 0020 |



30 348363N
95.171199W

30 348363N
94.987632W



Key to Adjacent Sheets

| | | |
|--|---|---|
| | 1 | 2 |
| | 4 | 5 |

ST: Texas (48)
 COU: Liberty (291)
 SHEET 1 OF 14 PARENT SHEETS

