

P.L. 94-171 VOTING DISTRICT OUTLINE MAP (CENSUS 2000)

34 427542N  
102 350648W

34 427542N  
102 063388W

**GEOGRAPHIC AREAS LEGEND**

SYMBOL	NAME STYLE
*****	INTERNATIONAL
*****	AIR (FEDERAL)
*****	Trust Land
//////	STATE
	COUNTY
o-o-o-o-o	CENSUS COUNTY DIV.
Yellow	Incorporated Place
Orange	Census Designated Place
Blue	Voting District
Military	

Abbreviation Reference: AIR = American Indian Reservation; Trust Land = Off-Reservation Trust Land  
 1. A "\*" following a VTD code indicates an actual voting district. Its absence indicates that the VTD is a pseudo voting district or no information is available as to its status.

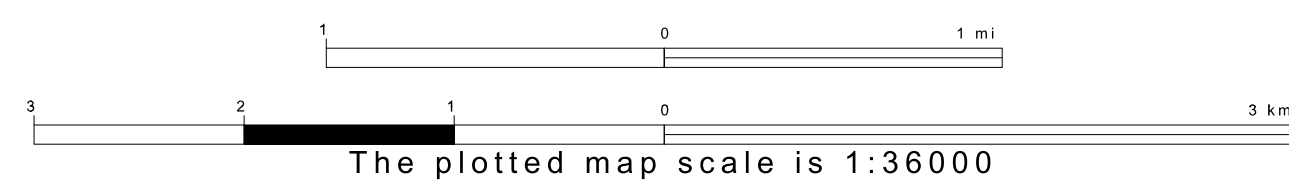
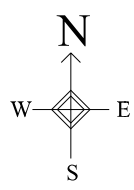
**Voting Districts**

Code	Name
0001	Voting District 0001
0003	Voting District 0003
0005	Voting District 0005
0012	Voting District 0012

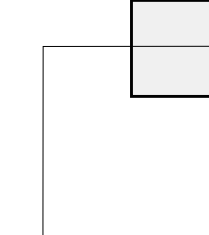


34 188473N  
102 350648W

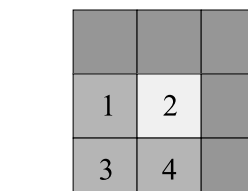
34 188473N  
102 063388W



Sheet Location within County



Key to Adjacent Sheets



ST: Texas (48)  
 COU: Lamb (279)  
 SHEET 2 OF 6 PARENT SHEETS

