

Animal Genetics Inc.

1336 Timberlane Rd. Tallahassee, FL 32312 www.avianbiotech.com 800-514-96723

Genetic sexing of Japanese Quail,

We set up the initial procedure for sexing of Japanese Quail by mimicking the procedure used for other quail species (Mountain Quail). This procedure utilizes the DNA differences in sex in a particular gene (CHD). We use PCR to amplify this segment of DNA followed by a restriction enzyme digest to clarify these sex differences when separated on an agarose gel (1.3%). An image of the agarose gel is digitally recorded and analyzed using a Kodak Gel Logic 200.

The initial trial of five Japanese Quail was received on 4-27-04 and was identical to results for the Mountain Quail already in our database. Of the 180 samples received on 10-29-04, ten were subject to retesting due to inconclusive results in the initial test. Of those ten samples, four had to be rerun one additional time to reach conclusive results. Inconclusive results are due to a number of reasons the major being insufficient target DNA present.

Technician


Edwin de Kloet

Date 2-24-05

Avian Biotech International

Name: Crystal Driver

Business: Battelle, Pacific Northwest L Account#: 132024

Received	Label ID	Species	Bird ID	Sex	Polyoma	Chlamydia-P.	PBFD
4/27/04							
	C11062494	Japanese Quail	12-111	Male	-	-	-
	C11062497	Japanese Quail	14-207	Female	-	-	-
	C11062640	Japanese Quail	15-105	Female	-	-	-
	C11062646	Japanese Quail	12-133	Male	-	-	-
	C11062667	Japanese Quail	13-170	Male	-	-	-
10/29/04							
		Japanese Quail	BS-F2-1, 399/34 6/17/04	Female	-	-	-
11197891		Japanese Quail	BS-F2-2, 468/32 6/16/04	Male	-	-	-
11197796		Japanese Quail	BS-F2-3, 471/31 6/16/04	Female	-	-	-
11197816		Japanese Quail	BS-F2-4, 472/31 6/16/04	Male	-	-	-
11197875		Japanese Quail	BS-F2-5, 476/32 6/16/04	Female	-	-	-
11197829		Japanese Quail	BS-F2-6, 477/32 6/16/04	Male	-	-	-
		Japanese Quail	BS-F2-7, 479/32 6/16/04	Female	-	-	-
11197861		Japanese Quail	BS-F2-8, 481/32 6/16/04	Female	-	-	-
11197825		Japanese Quail	BS-F2-9, 482/32 6/16/04	Female	-	-	-
11197837		Japanese Quail	BS-F2-10, 483/32 6/16/04	Female	-	-	-
11198069		Japanese Quail	BS-F2-11, 489/11 6/16/04	Female	-	-	-
11198097		Japanese Quail	BS-F2-12, 492/11 6/16/04	Male	-	-	-
11197814		Japanese Quail	BS-F2-13, 493/11 6/16/04	Male	-	-	-
		Japanese Quail	BS-F2-14, 494/35 6/17/04	Female	-	-	-
		Japanese Quail	BS-F2-15, 495-1/35 6/17/04	Female	-	-	-
		Japanese Quail	BS-F2-16, 495-2/35 6/17/04	Male	-	-	-
		Japanese Quail	BS-F2-17, 496/35 6/17/04	Male	-	-	-
		Japanese Quail	BS-F2-18, 497/35 6/17/04	Female	-	-	-
		Japanese Quail	BS-F2-19, 498/33 6/17/04	Male	-	-	-
		Japanese Quail	BS-F2-20, 500/33 6/17/04	Female	-	-	-
11197820		Japanese Quail	BS-F2-21, 544/31 6/16/04	Male	-	-	-
11197801		Japanese Quail	BS-F2-22, 545/31 6/16/04	Female	-	-	-
		Japanese Quail	BS-F2-23, 546/32 6/16/04	Female	-	-	-
11197871		Japanese Quail	BS-F2-24, 548/32 6/16/04	Female	-	-	-
11197865		Japanese Quail	BS-F2-25, 549/32 6/16/04	Male	-	-	-
11197895		Japanese Quail	BS-F2-26, 550/32 6/16/04	Male	-	-	-
11198093		Japanese Quail	BS-F2-27, 551/11 6/16/04	Male	-	-	-
11198003		Japanese Quail	BS-F2-28, 552/11 6/16/04	Male	-	-	-
11198099		Japanese Quail	BS-F2-29, 553/11 6/16/04	Male	-	-	-
		Japanese Quail	BS-F2-30, 554/35 6/17/04	Female	-	-	-
11197863		Japanese Quail	BS-F2-31, 556/12 6/16/04	Male	-	-	-
11197976		Japanese Quail	BS-F2-32, 557/12 6/16/04	Male	-	-	-
11197964		Japanese Quail	BS-F2-33, 558/12 6/16/04	Male	-	-	-
11198079		Japanese Quail	BS-F2-34, 559/12 6/16/04	Male	-	-	-
		Japanese Quail	BS-F2-35, 560/34 6/17/04	Female	-	-	-
		Japanese Quail	BS-F2-36, 561/34 6/17/04	Male	-	-	-
		Japanese Quail	BS-F2-37, 562/34 6/17/04	Male	-	-	-
		Japanese Quail	BS-F2-38, 563/34 6/17/04	Male	-	-	-
		Japanese Quail	BS-F2-39, 564/34 6/17/04	Female	-	-	-
		Japanese Quail	BS-F2-40, 565/34 6/17/04	Male	-	-	-
		Japanese Quail	BS-F2-41, 567/34 6/17/04	Male	-	-	-

Received	Label ID	Species	Bird ID	Sex	Polyoma	Chlamydia-P.	PBFD
		Japanese Quail	BS-F2-42, 569/34 6/17/04	Female	-	-	-
		Japanese Quail	BS-F2-43, 570/34 6/17/04	Male	-	-	-
11198067		Japanese Quail	BS-F2-44, 571/12 6/16/04	Male	-	-	-
11197992		Japanese Quail	BS-F2-45, 572/12 6/16/04	Male	-	-	-
11198059		Japanese Quail	BS-F2-46, 573/12 6/16/04	Male	-	-	-
11198047		Japanese Quail	BS-F2-47, 574/12 6/16/04	Female	-	-	-
		Japanese Quail	BS-F2-48, 576/32 6/16/04	Male	-	-	-
11197869		Japanese Quail	BS-F2-49, 577/32 6/16/04	Male	-	-	-
11198007		Japanese Quail	BS-F2-50, 578/11 6/16/04	Male	-	-	-
		Japanese Quail	BS-F2-51, 579/35 6/17/04	Male	-	-	-
		Japanese Quail	BS-F2-52, 580/35 6/17/04	Male	-	-	-
		Japanese Quail	BS-F2-53, 582/35 6/17/04	Male	-	-	-
11198091		Japanese Quail	BS-F2-54, 583/11 6/16/04	Male	-	-	-
		Japanese Quail	BS-F2-55, 584/33 6/17/04	Female	-	-	-
		Japanese Quail	BS-F2-56, 585/33 6/17/04	Female	-	-	-
		Japanese Quail	BS-F2-57, 586/35 6/17/04	Female	-	-	-
		Japanese Quail	BS-F2-58, 587/35 6/17/04	Male	-	-	-
		Japanese Quail	BS-F2-59, 588/35 6/17/04	Male	-	-	-
		Japanese Quail	BS-F2-60, 589/35 6/17/04	Female	-	-	-
		Japanese Quail	BS-F2-61, 591/34 6/17/04	Male	-	-	-
		Japanese Quail	BS-F2-62, 597/32 6/16/04	Female	-	-	-
		Japanese Quail	BS-F2-63, 598/34 6/17/04	Male	-	-	-
		Japanese Quail	BS-F2-64, 600/34 6/17/04	Female	-	-	-
11198085		Japanese Quail	BS-F2-65, 635/11 6/16/04	Female	-	-	-
11198103		Japanese Quail	BS-F2-66, 637/11 6/16/04	Female	-	-	-
11197810		Japanese Quail	BS-F2-67, 638/11 6/16/04	Male	-	-	-
11197874		Japanese Quail	BS-F2-68, 639/11 6/16/04	Female	-	-	-
		Japanese Quail	BS-F2-69, 640/33 6/16/04	Female	-	-	-
		Japanese Quail	BS-F2-70, 641/33 6/17/04	Female	-	-	-
		Japanese Quail	BS-F2-71, 642/35 6/17/04	Male	-	-	-
		Japanese Quail	BS-F2-72, 644/35 6/17/04	Female	-	-	-
		Japanese Quail	BS-F2-73, 646/35 6/17/04	Female	-	-	-
		Japanese Quail	BS-F2-74, 647/33 6/17/04	Female	-	-	-
		Japanese Quail	BS-F2-75, 648/35 6/17/04	Male	-	-	-
		Japanese Quail	BS-F2-76, 649/35 6/17/04	Male	-	-	-
		Japanese Quail	BS-F2-77, 650/33 6/17/04	Female	-	-	-
		Japanese Quail	BS-F2-78, 651/33 6/17/04	Female	-	-	-
		Japanese Quail	BS-F2-79, 652/33 6/16/04	Female	-	-	-
		Japanese Quail	BS-F2-80, 653/33 6/17/04	Female	-	-	-
		Japanese Quail	BS-F2-81, 654/33 6/16/04	Male	-	-	-
		Japanese Quail	BS-F2-82, 655/33 6/17/04	Male	-	-	-
		Japanese Quail	BS-F2-83, 656/33 6/17/04	Male	-	-	-
		Japanese Quail	BS-F2-84, 657/34 6/17/04	Male	-	-	-
		Japanese Quail	BS-F2-85, 658/34 6/17/04	Male	-	-	-
		Japanese Quail	BS-F2-86, 659/34 6/17/04	Male	-	-	-
11197988		Japanese Quail	BS-F2-87, 660/12 6/16/04	Female	-	-	-
11198075		Japanese Quail	BS-F2-88, 661/12 6/16/04	Female	-	-	-
11197960		Japanese Quail	BS-F2-89, 662/12 6/16/04	Female	-	-	-
11198063		Japanese Quail	BS-F2-90, 663/12 6/16/04	Male	-	-	-
11197980		Japanese Quail	BS-F2-91, 664/12 6/16/04	Male	-	-	-
		Japanese Quail	BS-F2-92, 665/32 6/16/04	Female	-	-	-
11197903		Japanese Quail	BS-F2-93, 666/32 6/16/04	Female	-	-	-
11198035		Japanese Quail	BS-F2-94, 670/12 6/16/04	Male	-	-	-

Received	Label ID	Species	Bird ID	Sex	Polyoma	Chlamydia-P.	PBFD
	11198087	Japanese Quail	BS-F2-95, 671/12 6/16/04	Male	-	-	-
	11198071	Japanese Quail	BS-F2-96, 672/12 6/16/04	Female	-	-	-
	11197968	Japanese Quail	BS-F2-97, 673/12 6/16/04	Male	-	-	-
	11198051	Japanese Quail	BS-F2-98, 674/12 6/16/04	Male	-	-	-
	11197822	Japanese Quail	BS-F2-99, 678/11 6/16/04	Male	-	-	-
	11198107	Japanese Quail	BS-F2-100, 679/11 6/16/04	Male	-	-	-
		Japanese Quail	BS-F2-101, 681/35 6/17/04	Female	-	-	-
		Japanese Quail	BS-F2-102, 683/35 6/17/04	Female	-	-	-
		Japanese Quail	BS-F2-103, 684/35 6/17/04	Female	-	-	-
		Japanese Quail	BS-F2-104, 686/33 6/17/04	Male	-	-	-
		Japanese Quail	BS-F2-105, 687/33 6/17/04	Male	-	-	-
		Japanese Quail	BS-F2-106, 688/33 6/17/04	Male	-	-	-
	11198061	Japanese Quail	BS-F2-107, 689/11 6/16/04	Male	-	-	-
	11197806	Japanese Quail	BS-F2-108, 690/11 6/16/04	Female	-	-	-
	11197878	Japanese Quail	BS-F2-109, 692/11 6/16/04	Male	-	-	-
	11198073	Japanese Quail	BS-F2-110, 693/11 6/16/04	Male	-	-	-
	11198043	Japanese Quail	BS-F2-111, 694/12 6/16/04	Male	-	-	-
	11197984	Japanese Quail	BS-F2-112, 695/12 6/16/04	Male	-	-	-
	11198039	Japanese Quail	BS-F2-113, 696/12 6/16/04	Female	-	-	-
	11197972	Japanese Quail	BS-F2-114, 698/12 6/16/04	Male	-	-	-
	11197989	Japanese Quail	BS-F2-115, 699/12 6/16/04	Male	-	-	-
	11198055	Japanese Quail	BS-F2-116, 700/12 6/16/04	Male	-	-	-
	11197828	Japanese Quail	3S-F2-117, 11-301/31 6/16/04	Female	-	-	-
	11197845	Japanese Quail	3S-F2-118, 11-302/31 6/16/04	Male	-	-	-
	11197808	Japanese Quail	3S-F2-119, 11-303/31 6/16/04	Female	-	-	-
	11197860	Japanese Quail	3S-F2-120, 11-304/13 6/16/04	Male	-	-	-
	11198049	Japanese Quail	3S-F2-121, 11-305/13 6/16/04	Male	-	-	-
	11197832	Japanese Quail	3S-F2-122, 11-306/31 6/16/04	Female	-	-	-
	11197813	Japanese Quail	3S-F2-123, 11-307/31 6/16/04	Female	-	-	-
	11198045	Japanese Quail	3S-F2-124, 11-308/13 6/16/04	Male	-	-	-
	11197844	Japanese Quail	3S-F2-125, 11-309/13 6/16/04	Male	-	-	-
	11197856	Japanese Quail	3S-F2-126, 11-310/13 6/16/04	Male	-	-	-
	11197864	Japanese Quail	3S-F2-127, 11-311/13 6/16/04	Female	-	-	-
	11197840	Japanese Quail	3S-F2-128, 11-312/18 6/16/04	Male	-	-	-
	11197867	Japanese Quail	3S-F2-129, 11-313/13 6/16/04	Male	-	-	-
	11197853	Japanese Quail	3S-F2-130, 12-301/31 6/16/04	Male	-	-	-
	11197804	Japanese Quail	3S-F2-131, 12-302/31 6/16/04	Female	-	-	-
	11197817	Japanese Quail	3S-F2-132, 12-303/31 6/16/04	Male	-	-	-
	11197836	Japanese Quail	3S-F2-133, 12-304/13 6/16/04	Male	-	-	-
	11197812	Japanese Quail	3S-F2-134, 13-301/31 6/16/04	Male	-	-	-
	11197821	Japanese Quail	3S-F2-135, 13-303/31 6/16/04	Female	-	-	-
	11197852	Japanese Quail	3S-F2-136, 13-304/13 6/16/04	Male	-	-	-
	11197868	Japanese Quail	3S-F2-137, 13-305/13 6/16/04	Female	-	-	-
	11197999	Japanese Quail	3S-F2-138, 13-306/13 6/16/04	Female	-	-	-
	11198083	Japanese Quail	3S-F2-139, 13-307/12 6/16/04	Male	-	-	-
	11197841	Japanese Quail	3S-F2-140, 14-159/31 6/16/04	Female	-	-	-
	11197797	Japanese Quail	3S-F2-141, 14-160/31 6/16/04	Female	-	-	-
	11197809	Japanese Quail	3S-F2-142, 14-161/31 6/16/04	Male	-	-	-
	11197800	Japanese Quail	3S-F2-143, 14-162/31 6/16/04	Female	-	-	-
		Japanese Quail	3S-F2-144, 14-163/33 6/16/04	Female	-	-	-
		Japanese Quail	3S-F2-145, 14-164/33 6/17/04	Male	-	-	-
		Japanese Quail	3S-F2-146, 14-166/33 6/17/04	Female	-	-	-
		Japanese Quail	3S-F2-147, 14-167/35 6/17/04	Male	-	-	-

Received	Label ID	Species	Bird ID	Sex	Polyoma	Chlamydia-P.	PBFD	
		Japanese Quail	3S-F2-148, 14-168/33	6/17/04	Female	-	-	-
		Japanese Quail	3S-F2-149, 14-169/33	6/17/04	Female	-	-	-
		Japanese Quail	3S-F2-150, 14-170/33	6/17/04	Female	-	-	-
		Japanese Quail	3S-F2-151, 14-171/35	6/17/04	Male	-	-	-
		Japanese Quail	3S-F2-152, 14-172/35	6/17/04	Male	-	-	-
		Japanese Quail	3S-F2-153, 14-173/35	6/17/04	Male	-	-	-
		Japanese Quail	3S-F2-154, 14-174/34	6/17/04	Male	-	-	-
		Japanese Quail	3S-F2-155, 14-175/34	6/17/04	Female	-	-	-
		Japanese Quail	3S-F2-156, 14-178/34	6/17/04	Female	-	-	-
		Japanese Quail	3S-F2-157, 14-179/34	6/17/04	Male	-	-	-
		Japanese Quail	3S-F2-158, 14-180/34	6/17/04	Female	-	-	-
11197848		Japanese Quail	3S-F2-159, 14-181/13	6/16/04	Female	-	-	-
11197995		Japanese Quail	3S-F2-160, 14-182/13	6/16/04	Female	-	-	-
11198053		Japanese Quail	3S-F2-161, 14-183/13	6/16/04	Female	-	-	-
11197993		Japanese Quail	3S-F2-162, 14-184/12	6/16/04	Male	-	-	-
		Japanese Quail	3S-F2-163, 14-185/34	6/17/04	Male	-	-	-
11198041		Japanese Quail	3S-F2-164, 14-199/13	6/16/04	Male	-	-	-
11197996		Japanese Quail	3S-F2-165, 14-200/13	6/16/04	Male	-	-	-
11197805		Japanese Quail	3S-F2-166, 15-139/31	6/16/04	Female	-	-	-
11197824		Japanese Quail	3S-F2-167, 15-140/31	6/16/04	Male	-	-	-
11198089		Japanese Quail	3S-F2-168, 15-141/11	6/16/04	Male	-	-	-
		Japanese Quail	3S-F2-169, 15-142/33	6/17/04	Male	-	-	-
		Japanese Quail	3S-F2-170, 15-143/33	6/17/04	Male	-	-	-
		Japanese Quail	3S-F2-171, 15-144/33	6/17/04	Female	-	-	-
		Japanese Quail	3S-F2-172, 15-145/34	6/17/04	Female	-	-	-
11197857		Japanese Quail	3S-F2-173, 15-146/32	6/16/04	Male	-	-	-
11197887		Japanese Quail	3S-F2-174, 15-147/32	6/16/04	Male	-	-	-
11197899		Japanese Quail	3S-F2-175, 15-148/32	6/16/04	Female	-	-	-
		Japanese Quail	3S-F2-176, 15-149/32	6/16/04	Female	-	-	-
11197793		Japanese Quail	3S-F2-177, 15-150/31	6/16/04	Female	-	-	-
11198057		Japanese Quail	3S-F2-178, 15-325/13	6/16/04	Female	-	-	-
11197826		Japanese Quail	3S-F2-179, 1(676/677)/11	6/16/04	Male	-	-	-
11198077		Japanese Quail	3S-F2-180, 2(676/677)/11	6/16/04	Male	-	-	-

2x8

1	158	10/29	Japanese Quail		M
2	159	10/29	Japanese Quail		M
3	160	10/29	Japanese Quail		M
4	161	10/29	Japanese Quail		M
5	162	10/29	Japanese Quail		M
6	163	10/29	Japanese Quail		M
7	164	10/29	Japanese Quail		F
8	165	10/29	Japanese Quail		F
9	166	10/29	Japanese Quail		F
10	167	10/29	Japanese Quail		M
11	168	10/29	Japanese Quail		M
12	169	10/29	Japanese Quail		F
13	170	10/29	Japanese Quail		F
14	171	10/29	Japanese Quail		M
15	172	10/29	Japanese Quail		M
16	173	10/29	Japanese Quail		F
17	174	10/29	Japanese Quail		M
18	175	10/29	Japanese Quail		M
19	176	10/29	Japanese Quail		XX
20	177	10/29	Japanese Quail		XX

2x8

21	178	10/29	Japanese Quail		F
22	179	10/29	Japanese Quail		F
23	180	10/29	Japanese Quail		F
24	181	10/29	Japanese Quail		M
25	182	10/29	Japanese Quail		M
26	183	10/29	Japanese Quail		M
27	184	10/29	Japanese Quail		M
28	185	10/29	Japanese Quail		F?
29	186	10/29	Japanese Quail		M
30	187	10/29	Japanese Quail		M
31	188	10/29	Japanese Quail		M
32	189	10/29	Japanese Quail		M
33	190	10/29	Japanese Quail		F
34	191	10/29	Japanese Quail		M
35	192	10/29	Japanese Quail		M
36	193	10/29	Japanese Quail		F
37	194	10/29	Japanese Quail		M
38	195	10/29	Japanese Quail		M
39	196	10/29	Japanese Quail		XX
40	197	10/29	Japanese Quail		XX

2x8

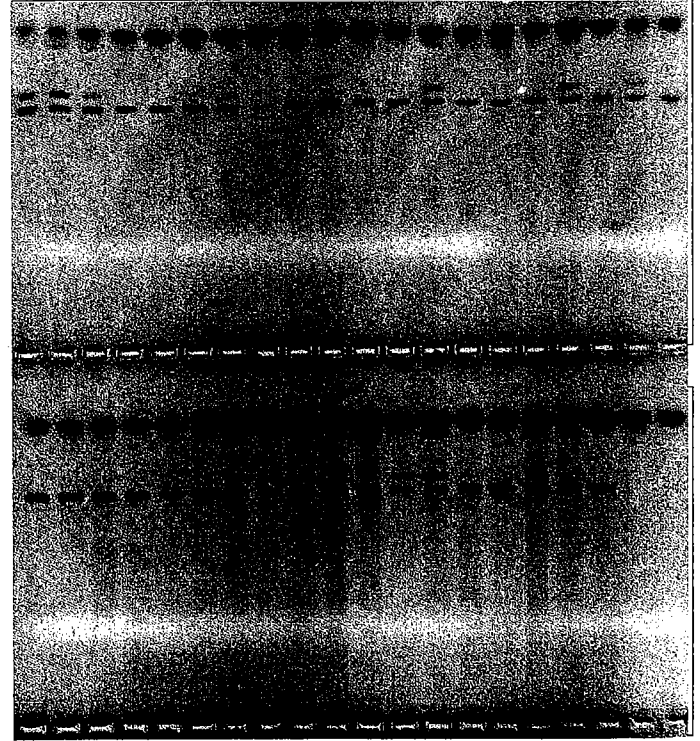
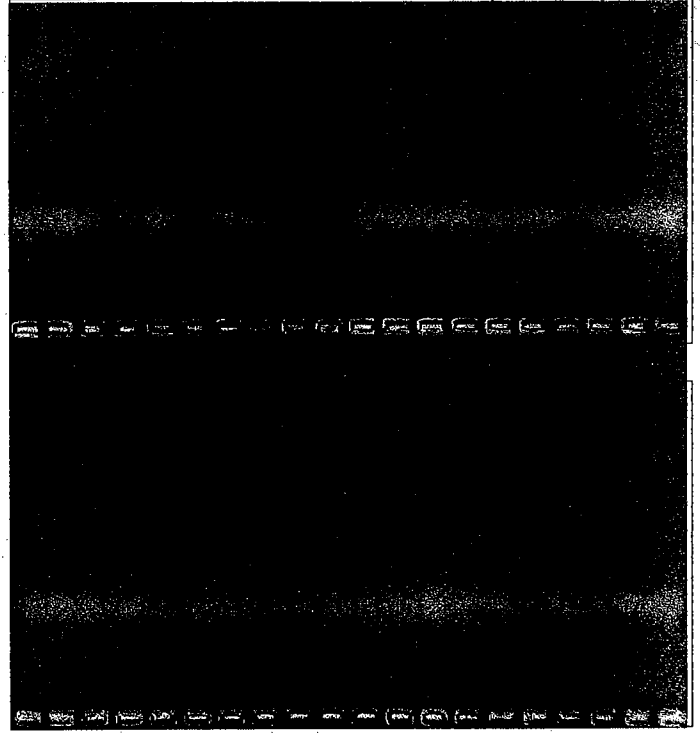
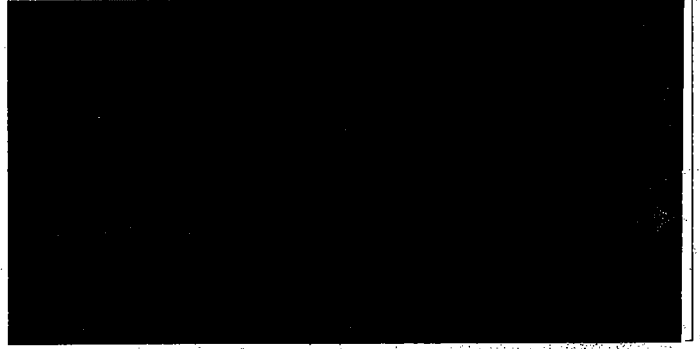
41	198	10/29	Japanese Quail		M
42	199	10/29	Japanese Quail		F
43	200	10/29	Japanese Quail		XX
44	201	10/29	Japanese Quail		M
45	202	10/29	Japanese Quail		M
46	203	10/29	Japanese Quail		M
47	204	10/29	Japanese Quail		F
48	205	10/29	Japanese Quail		M
49	206	10/29	Japanese Quail		XX
50	207	10/29	Japanese Quail		XX
51	208	10/29	Japanese Quail		F
52	209	10/29	Japanese Quail		M
53	210	10/29	Japanese Quail		XX
54	211	10/29	Japanese Quail		XX
55	212	10/29	Japanese Quail		F
56	213	10/29	Japanese Quail		M
57	214	10/29	Japanese Quail		F
58	215	10/29	Japanese Quail		F
59	216	10/29	Japanese Quail		M
60	217	10/29	Japanese Quail		F

2x8

61	218	10/29	Japanese Quail		F
62	219	10/29	Japanese Quail		M
63	220	10/29	Japanese Quail		F
64	221	10/29	Japanese Quail		F
65	222	10/29	Japanese Quail		M
66	223	10/29	Japanese Quail		F
67	224	10/29	Japanese Quail		M
68	225	10/29	Japanese Quail		F
69	226	10/29	Japanese Quail		F
70	227	10/29	Japanese Quail		F
71	228	10/29	Japanese Quail		M
72	229	10/29	Japanese Quail		M
73	230	10/29	Japanese Quail		M
74	231	10/29	Japanese Quail		M
75	232	10/29	Japanese Quail		F
76	233	10/29	Japanese Quail		F
77	234	10/29	Japanese Quail		M
78	235	10/29	Japanese Quail		F
79	236	10/29	Japanese Quail		F?
80	237	10/29	Japanese Quail		F?

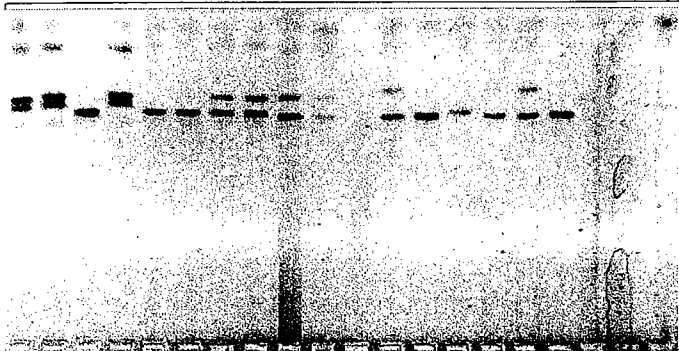
2x8

1	238	10/29	Japanese Quail		F
2	239	10/29	Japanese Quail		M
3	240	10/29	Japanese Quail		M
4	241	10/29	Japanese Quail		M
5	242	10/29	Japanese Quail		M
6	243	10/29	Japanese Quail		F
7	244	10/29	Japanese Quail		M
8	245	10/29	Japanese Quail		M
9	246	10/29	Japanese Quail		M
10	247	10/29	Japanese Quail		M
11	248	10/29	Japanese Quail		F
12	249	10/29	Japanese Quail		F
13	250	10/29	Japanese Quail		M
14	251	10/29	Japanese Quail		M
15	252	10/29	Japanese Quail		F
16	253	10/29	Japanese Quail		F
17	254	10/29	Japanese Quail		F
18	255	10/29	Japanese Quail		F
19	256	10/29	Japanese Quail		M
20	257	10/29	Japanese Quail		M



2x8

21	83	11/2	African Grey Parrot		F
22	87	11/2	Congo African Grey		F
23	89	11/2	Superb Starling		M
24	96	11/2	African Grey Parrot		F
25	176	10/29	Japanese Quail		M
26	177	10/29	Japanese Quail		M
27	185	10/29	Japanese Quail		F
28	200	10/29	Japanese Quail		F
29	40	10/30	Blue-crowned Motmot		F
30		f	Blue-crowned Motmot		F
31		m	Blue-crowned Motmot		XX
32	60	10/30	Green Wood Hoopoe		F
33	61	10/30	Green Wood Hoopoe		M
34	62	10/30	Blue-necked Tanager		M
35	63	10/30	Green Wood Hoopoe		M
36	64	10/30	Green Wood Hoopoe		F
37	65	10/30	Green Wood Hoopoe		M
38		f	Green Wood Hoopoe		XX
39		m	Green Wood Hoopoe		XX
40		10/30	Hornbill		XX



2x8

1	1	4/27	Lovebird	0.5	F
2	2	4/27	Lovebird	0.5	M
3	3	4/27	Lovebird	0.5	F
4	4	4/27	Lovebird	0.5	F
5	6	4/27	Senegal Parrot	0.5	F
6	16	4/27	African Grey Parrot	0.5	F
7	26	4/27	Tinneh African Grey	0.5	F
8	27	4/27	Tinneh African Grey	0.5	M
9	28	4/27	Tinneh African Grey	0.5	F
10	29	4/27	Tinneh African Grey	0.5	F
11	35	4/27	Saddle-billed Stork	0.5	F
12	36	4/27	Greater Flamingo	0.5	M
13	37	4/27	Greater Flamingo	0.5	M
14	38	4/27	Congo African Grey	0.5	M
15	40	4/27	Senegal Parrot	0.5	M
16	41	4/27	Congo African Grey	0.5	F
17	42	4/27	Congo African Grey	0.5	F
18	48	4/27	Meyer's Parrot	0.5	F
19	70	4/27	Congo African Grey	0.5	M
20	80	4/27	Japanese Quail	0.5	M

2x8

21	81	4/27	Japanese Quail	0.5	F
22	82	4/27	Japanese Quail	0.5	F
23	83	4/27	Japanese Quail	0.5	M
24	84	4/27	Japanese Quail	0.5	M
25	85	4/27	Congo African Grey	0.5	F
26	86	4/27	Congo African Grey	0.5	M
27	87	4/27	Tinneh African Grey	0.5	M
28	88	4/27	Tinneh African Grey	0.5	F
29	89	4/27	Lesser Flamingo	0.5	M
30	90	4/27	Lesser Flamingo	0.5	M
31	91	4/27	Lesser Flamingo	0.5	F
32	92	4/27	Lesser Flamingo	0.5	F
33	93	4/27	Lesser Flamingo	0.5	F
34	94	4/27	Lesser Flamingo	0.5	F
35	95	4/27	Lesser Flamingo	0.5	M
36	96	4/27	Lesser Flamingo	0.5	M
37	97	4/27	Babbler	XX	XX
38	98	4/27	Babbler	F?	F?
39	99	4/27	Babbler	F?	F?
40	101	4/27	Parrot	XX	XX

2x8

41	102	4/27	Turquoise Tanager		F
42	103	4/27	Bay-headed Tanager		M
43	104	4/27	Micronesian Kingfisher	0.5	F
44	594f	4/27	Blue-breasted King Fisher	0.5	F
45	594m	4/27	Blue-breasted King Fisher		M
46	114	4/27	Parrotlet		F
47	115	4/27	Parrotlet		F
48	116	4/27	Parrotlet		F
49	117	4/27	Parrotlet		F
50	118	4/27	Parrotlet		F
51	120	4/27	Congo African Grey		M
52	121	4/27	Senegal Parrot		M
53	125	4/27	African Grey Parrot		F
54	131	4/27	Tinneh African Grey	0.5	M
55	21	4/26	Crimson Rosella		XX
56	46	4/26	Senegal Parrot		XX
57	127	4/26	Calico Macaw	0.5	F
58	138	4/26	Sovereign Macaw	0.5	F
59	163	4/26	Green-cheeked Conure		F
60	257	10/15	Amazon resampled	0.5	F

2x8

61	193	4/26	Grey-necked Woodrail		M
62	939f		Grey-necked Woodrail		F
63	939m		Grey-necked Woodrail		M
64	194	4/26	Silver Gull		M?
65	1024f		Silver Gull		F
66			Silver Gull		M
67					
68					
69					
70					
71					
72					
73					
74					
75					
76					
77					
78					
79					
80					

2x8

81					
82					
83					
84					
85					
86					
87					
88					
89					
90					
91					
92					
93					
94					
95					
96					
97					
98					
99					
##					

