

News

U.S. Department of Labor
Bureau of Labor Statistics
Two Pershing Square Building
2300 Main Street, Suite 1190
Kansas City, Missouri 64108



FOR FURTHER INFORMATION:
(816) 285-7000
Media Contact: Jacqueline Michael-Midkiff (816) 285-7001
WWW Access: <http://www.bls.gov/ro7>

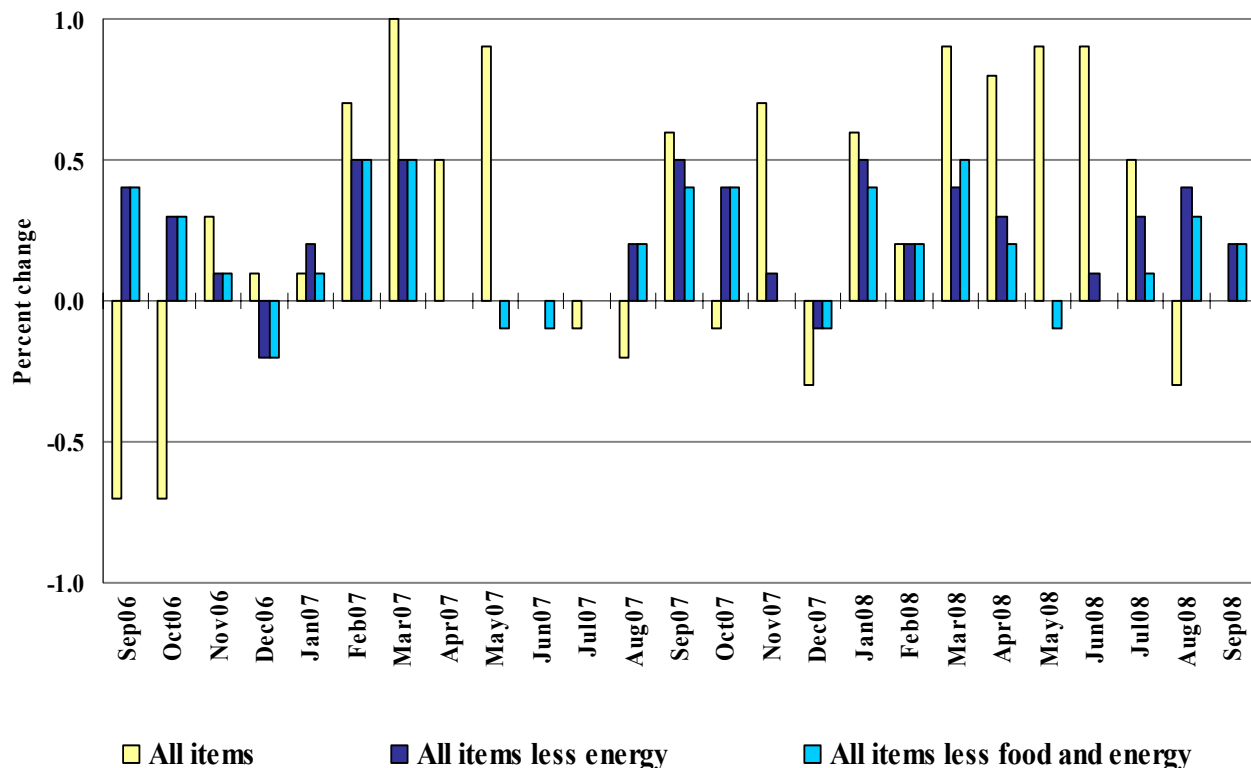
FOR RELEASE:
October 16, 2008
7:30am Central Time

MIDWEST REGION CONSUMER PRICE INDEX (CPI) – SEPTEMBER 2008

Prices in the Midwest were unchanged over the month and 4.8 percent higher over the year

The Consumer Price Index for the Midwest was unchanged in September after decreasing 0.3 percent in August. The index was up 4.8 percent from September 2007, the U.S. Department of Labor's Bureau of Labor Statistics reported today. According to Regional Commissioner Stanley W. Suchman, prices for housing and transportation declined for the second straight month. In September, these declines were offset by increases in other major expenditure categories. Energy prices, down 2.0 percent over the month, have advanced 21.2 percent since September 2007. The Midwest CPI for all items less energy was 0.2 percent higher over the month and was up 2.9 percent over the year.

Midwest Region, CPI-U Monthly Percent Change
September 2006 to September 2008



Among the eight major expenditure categories, lower housing costs had the largest impact on the overall index in September 2008. The housing index decreased 0.6 percent over the month, largely attributable to a 9.6 percent fall in utility (piped) gas service costs. This followed an August decline of 6.8 percent and was the largest 1-month decrease in utility (piped) gas service costs since Midwest publication began in December 1977. The household fuels and utilities index registered a monthly decline of 3.4 percent in September with electricity prices up 0.5 percent. Shelter costs inched down 0.2 percent with price decreases in lodging away from home offsetting a 0.3 percent increase in rent of primary residence and a slight 0.2 percent rise in owners' equivalent rent of primary residence. From September 2007 to September 2008, housing costs increased 2.8 percent in the Midwest. Shelter costs rose 0.9 percent and prices for household fuels and utilities were up 13.4 percent. Within fuels and utilities, electricity prices rose 5.9 percent over the year, and prices for utility (piped) gas service climbed 26.7 percent. The household furnishings and operations index was up 2.2 percent over the 12-month period.

Partially countering the declines in housing costs, the apparel index rose 4.5 percent in September. Apparel prices typically increase in September as retailers introduce fall merchandise. Prices for apparel were up 3.8 percent from the previous year.

The transportation index decreased 0.8 percent, largely reflecting a downturn in prices for new and used motor vehicles. Prices for new vehicles and for used cars and trucks declined in September, down 1.1 and 1.7 percent, respectively. Motor fuel costs were down 0.6 percent over the month. Overall, transportation prices have risen 10.1 percent since September 2007 led by an over-the-year increase of 26.7 percent in motor fuel costs. Prices for new vehicles were 1.7 percent lower and prices for used cars and trucks were down 2.4 percent.

The food and beverages index rose 0.6 percent in September with prices for food at home up 0.8 percent and prices for food away from home 0.4 percent higher. Prices for alcoholic beverages increased 0.4 percent over the month. From September 2007 to September 2008, prices for food and beverages rose 6.5 percent. Prices for food at home advanced by the largest amount since June 1981, increasing 8.1 percent over the year, and prices for food away from home rose 5.0 percent. Alcoholic beverages' prices increased 3.3 percent since September 2007.

The remaining four major expenditure categories—education and communication, medical care, recreation, and other goods and services—had less impact on the overall monthly index. The education and communication index rose 0.6 percent in September and 3.2 percent over the year. Medical care costs were up 0.4 percent over the month and were 2.2 percent higher than in September 2007. Prices for recreation rose 0.4 percent for the month and 3.5 percent over the year. Other goods and services prices were nearly unchanged in September, but advanced 3.8 percent over the year.

The Midwest Consumer Price Index for All Urban Consumers (CPI-U) stood at 209.252 in September. A typical market basket of goods and services that cost \$100.00 in the 1982-84 base period cost \$209.25 in September 2008. Because regional CPI data are not adjusted for seasonal price variation, consumers and businesses should be cautious in drawing conclusions about long-term retail price trends from short-term changes in the regional indexes.

Consumer Price Index data for October are scheduled for release on Wednesday, November 19, 2008, at 7:30 A.M. (CT).

Table 1. Consumer Price Index for All Urban Consumers (CPI-U): Indexes and percent changes for selected periods

Midwest (1982-84=100 unless otherwise noted)

Item and Group	Indexes			Percent change from—		
	July 2008	Aug. 2008	Sep. 2008	Sep. 2007	July 2008	Aug. 2008
Expenditure category						
All items	210.071	209.351	209.252	4.8	-0.4	0.0
All items (December 1977=100)	341.797	340.625	340.465	-	-	-
Food and beverages	208.290	209.866	211.122	6.5	1.4	.6
Food	208.043	209.703	210.986	6.8	1.4	.6
Food at home	204.951	207.019	208.642	8.1	1.8	.8
Food away from home	213.251	214.363	215.188	5.0	.9	.4
Alcoholic beverages	210.747	211.343	212.280	3.3	.7	.4
Housing	201.325	200.243	198.956	2.8	-1.2	-.6
Shelter	225.325	225.008	224.634	.9	-.3	-.2
Rent of primary residence ¹	215.119	215.500	216.235	2.3	.5	.3
Owners' equivalent rent of primary residence ^{1 2}	226.398	226.361	226.709	1.1	.1	.2
Fuels and utilities	237.361	230.905	223.127	13.4	-6.0	-3.4
Household energy	216.521	209.653	201.460	14.8	-7.0	-3.9
Gas (piped) and electricity ¹	223.044	215.964	207.372	14.2	-7.0	-4.0
Electricity ¹	176.399	176.306	177.246	5.9	.5	.5
Utility (piped) gas service ¹	306.581	285.769	258.398	26.7	-15.7	-9.6
Household furnishings and operations	122.035	122.043	122.103	2.2	.1	.0
Apparel	106.538	110.610	115.572	3.8	8.5	4.5
Transportation	214.830	209.344	207.735	10.1	-3.3	-.8
Private transportation	209.241	203.665	202.521	9.9	-3.2	-.6
New and used motor vehicles ³	94.381	94.811	93.729	-.5	-.7	-1.1
New vehicles	130.011	129.273	127.903	-1.7	-1.6	-1.1
New cars and trucks ^{3 4}	91.754	91.236	90.269	-1.5	-1.6	-1.1
New cars ⁴	130.562	130.500	129.700	1.1	-.7	-.6
Used cars and trucks	137.169	136.807	134.485	-2.4	-2.0	-1.7
Motor fuel	356.561	331.509	329.561	26.7	-7.6	-.6
Gasoline (all types)	354.832	329.824	328.783	26.9	-7.3	-.3
Gasoline, unleaded regular ⁴	354.478	329.600	328.262	27.2	-7.4	-.4
Gasoline, unleaded midgrade ^{4 5}	387.033	358.368	358.501	26.9	-7.4	.0
Gasoline, unleaded premium ⁴	342.794	319.999	319.110	25.5	-6.9	-.3
Medical care	360.652	361.277	362.755	2.2	.6	.4
Medical care commodities	288.927	290.348	291.854	-.2	1.0	.5
Medical care services	384.572	384.838	386.273	3.1	.4	.4
Professional services	329.555	329.199	330.155	3.2	.2	.3
Recreation ³	114.669	115.353	115.772	3.5	1.0	.4
Education and communication ³	124.922	126.263	127.070	3.2	1.7	.6
Other goods and services	336.042	334.948	335.242	3.8	-.2	.1
Commodity and service group						
All items	210.071	209.351	209.252	4.8	-.4	.0
Commodities	176.363	175.181	175.847	6.7	-.3	.4
Commodities less food and beverages	159.028	156.687	157.086	6.9	-1.2	.3
Nondurables less food and beverages	209.180	204.675	206.256	11.7	-1.4	.8
Nondurables less food, beverages, and apparel	275.739	265.716	265.132	14.1	-3.8	-.2
Durables	109.619	109.288	108.614	-.5	-.9	-.6
Services	245.216	244.983	244.079	3.3	-.5	-.4
Rent of shelter ²	231.661	231.331	230.940	.9	-.3	-.2
Transportation services	253.715	256.221	254.702	6.2	.4	-.6
Other services	287.999	290.333	291.722	3.7	1.3	.5

See footnotes at end of table.

Table 1. Consumer Price Index for All Urban Consumers (CPI-U): Indexes and percent changes for selected periods-Continued

Midwest (1982-84=100 unless otherwise noted)

Item and Group	Indexes			Percent change from—		
	July 2008	Aug. 2008	Sep. 2008	Sep. 2007	July 2008	Aug. 2008
Special aggregate indexes						
All items less medical care	202.637	201.867	201.705	5.0	-0.5	-0.1
All items less food	210.336	209.215	208.884	4.4	-.7	-.2
All items less shelter	206.778	205.902	205.904	6.4	-.4	.0
Commodities less food	160.813	158.567	158.984	6.7	-1.1	.3
Nondurables	209.727	208.085	209.518	9.1	-.1	.7
Nondurables less food	208.948	204.786	206.322	11.1	-1.3	.8
Nondurables less food and apparel	268.150	259.260	258.835	13.1	-3.5	-.2
Services less rent of shelter ²	274.186	274.054	272.503	5.8	-.6	-.6
Services less medical care services	234.102	233.842	232.810	3.4	-.6	-.4
Energy	277.788	262.842	257.484	21.2	-7.3	-2.0
All items less energy	204.980	205.802	206.277	2.9	.6	.2
All items less food and energy	205.022	205.685	206.005	2.1	.5	.2
Commodities less food and energy commodities	137.820	138.621	139.408	1.5	1.2	.6
Energy commodities	355.244	330.744	328.589	26.7	-7.5	-.7
Services less energy services	248.977	249.519	249.482	2.4	.2	.0

¹ This index series was calculated using a Laspeyres estimator. All other item stratum index series were calculated using a geometric means estimator.

² Index is on a December 1982=100 base.

³ Indexes on a December 1997=100 base.

⁴ Special index based on a substantially smaller sample.

⁵ Indexes on a December 1993=100 base.

- Data not available.

Regions defined as the four Census regions. Midwest includes Illinois, Indiana, Iowa, Kansas, Michigan, Minnesota, Missouri, Nebraska, North Dakota, Ohio, South Dakota, and Wisconsin.

NOTE: Index applies to a month as a whole, not to any specific date.

Table 2. Consumer Price Index for Urban Wage Earners and Clerical Workers (CPI-W): Indexes and percent changes for selected periods

Midwest (1982-84=100 unless otherwise noted)

Item and Group	Indexes			Percent change from—		
	July 2008	Aug. 2008	Sep. 2008	Sep. 2007	July 2008	Aug. 2008
Expenditure category						
All items	206.038	205.121	205.023	5.2	-0.5	0.0
All items (December 1977=100)	333.210	331.726	331.568	-	-	-
Food and beverages	208.404	209.987	211.225	6.5	1.4	.6
Food	208.238	209.895	211.185	6.8	1.4	.6
Food at home	205.221	207.180	208.794	7.9	1.7	.8
Food away from home	213.571	214.794	215.614	5.3	1.0	.4
Alcoholic beverages	210.111	210.704	211.262	3.3	.5	.3
Housing	195.867	194.801	193.559	3.3	-1.2	-6
Shelter	213.993	213.848	213.689	1.2	-1.1	-1
Rent of primary residence ¹	215.542	215.904	216.671	2.3	.5	.4
Owners' equivalent rent of primary residence ^{1 2}	210.780	210.738	211.051	1.2	.1	.1
Fuels and utilities	237.883	231.454	223.873	13.7	-5.9	-3.3
Household energy	215.992	209.249	201.373	15.0	-6.8	-3.8
Gas (piped) and electricity ¹	221.495	214.493	206.286	14.3	-6.9	-3.8
Electricity ¹	176.369	176.334	177.286	6.0	.5	.5
Utility (piped) gas service ¹	306.842	285.757	259.011	26.8	-15.6	-9.4
Household furnishings and operations	119.184	119.250	119.375	2.1	.2	.1
Apparel	104.741	109.090	113.860	4.5	8.7	4.4
Transportation	216.569	210.358	208.870	10.3	-3.6	-.7
Private transportation	213.126	206.852	205.632	10.2	-3.5	-6
New and used motor vehicles ³	93.974	94.096	92.997	-8	-1.0	-1.2
New vehicles	133.237	132.409	131.029	-1.4	-1.7	-1.0
Used cars and trucks	138.375	138.023	135.671	-2.4	-2.0	-1.7
Motor fuel	357.525	332.382	330.328	26.5	-7.6	-6
Gasoline (all types)	355.729	330.668	329.502	26.7	-7.4	-4
Gasoline, unleaded regular ⁴	355.161	330.270	328.796	27.0	-7.4	-4
Gasoline, unleaded midgrade ^{4 5}	386.816	358.077	358.094	26.7	-7.4	.0
Gasoline, unleaded premium ⁴	342.608	319.925	318.909	25.3	-6.9	-3
Medical care	362.541	363.322	364.838	2.2	.6	.4
Medical care commodities	282.792	284.415	285.838	-3	1.1	.5
Medical care services	387.478	387.853	389.364	3.1	.5	.4
Professional services	330.501	330.143	331.092	3.2	.2	.3
Recreation ³	111.024	111.666	111.979	3.1	.9	.3
Education and communication ³	121.480	122.730	123.397	3.1	1.6	.5
Other goods and services	350.506	349.666	349.858	4.6	-.2	.1
Commodity and service group						
All items	206.038	205.121	205.023	5.2	-.5	.0
Commodities	179.243	177.795	178.353	7.3	-.5	.3
Commodities less food and beverages	163.625	160.883	161.136	7.7	-1.5	.2
Nondurables less food and beverages	220.432	215.124	216.538	12.9	-1.8	.7
Nondurables less food, beverages, and apparel	291.845	280.400	279.638	15.3	-4.2	-.3
Durables	109.290	108.952	108.129	-.7	-1.1	-.8
Services	238.916	238.607	237.745	3.5	-.5	-.4
Rent of shelter ²	212.699	212.554	212.391	1.2	-.1	-.1
Transportation services	247.809	249.893	249.258	5.3	.6	-.3
Other services	271.509	273.676	274.764	3.5	1.2	.4
Special aggregate indexes						
All items less medical care	199.677	198.713	198.564	5.4	-.6	-.1
All items less food	205.381	204.002	203.654	4.9	-.8	-.2

See footnotes at end of table.

Table 2. Consumer Price Index for Urban Wage Earners and Clerical Workers (CPI-W): Indexes and percent changes for selected periods-Continued

Midwest (1982-84=100 unless otherwise noted)

Item and Group	Indexes			Percent change from—		
	July 2008	Aug. 2008	Sep. 2008	Sep. 2007	July 2008	Aug. 2008
Special aggregate indexes						
All items less shelter	205.660	204.459	204.382	6.8	-0.6	0.0
Commodities less food	165.217	162.571	162.834	7.5	-1.4	.2
Nondurables	215.698	213.644	214.981	9.8	-.3	.6
Nondurables less food	219.656	214.705	216.067	12.3	-1.6	.6
Nondurables less food and apparel	282.998	272.727	272.092	14.3	-3.9	-.2
Services less rent of shelter ²	245.518	245.054	243.480	5.9	-.8	-.6
Services less medical care services	228.216	227.879	226.914	3.5	-.6	-.4
Energy	280.093	264.831	259.738	21.5	-7.3	-1.9
All items less energy	198.197	199.080	199.611	3.0	.7	.3
All items less food and energy	196.390	197.112	197.485	2.2	.6	.2
Commodities less food and energy commodities	137.906	138.786	139.466	1.6	1.1	.5
Energy commodities	356.751	332.167	329.923	26.6	-7.5	-.7
Services less energy services	241.154	241.741	241.862	2.4	.3	.1

¹ This index series was calculated using a Laspeyres estimator. All other item stratum index series were calculated using a geometric means estimator.

² Index is on a December 1984=100 base.

³ Indexes on a December 1997=100 base.

⁴ Special index based on a substantially smaller sample.

⁵ Indexes on a December 1993=100 base.

- Data not available.

Regions defined as the four Census regions. Midwest includes Illinois, Indiana, Iowa, Kansas, Michigan, Minnesota, Missouri, Nebraska, North Dakota, Ohio, South Dakota, and Wisconsin.

NOTE: Index applies to a month as a whole, not to any specific date.

Table 3. Consumer Price Index for All Urban Consumers (CPI-U): Selected areas, all items index

(1982-84=100, unless otherwise noted)

Area	All items										
	Pricing schedule 1	Indexes				Percent change to Sep. 2008 from—			Percent change to Aug. 2008 from—		
		June 2008	July 2008	Aug. 2008	Sep. 2008	Sep. 2007	July 2008	Aug. 2008	Aug. 2007	June 2008	July 2008
U.S. city average	M	218.815	219.964	219.086	218.783	4.9	-0.5	-0.1	5.4	0.1	-0.4
Region and area size²											
Northeast urban	M	232.649	234.545	233.788	232.841	5.2	-7	-4	5.5	.5	-3
Size A - More than 1,500,000	M	234.518	236.460	236.107	235.314	4.9	-5	-3	5.3	.7	-1
Size B/C - 50,000 to 1,500,000 ³	M	138.542	139.623	138.537	137.723	5.8	-1.4	-6	6.1	.0	-8
Midwest urban	M	208.968	210.071	209.351	209.252	4.8	-4	.0	5.4	.2	-3
Size A - More than 1,500,000	M	209.813	211.003	210.341	210.283	4.5	-3	.0	5.3	.3	-3
Size B/C - 50,000 to 1,500,000 ³	M	134.018	134.595	133.969	133.982	5.1	-5	.0	5.6	.0	-5
Size D - Nonmetropolitan (less than 50,000)	M	205.122	206.435	206.251	205.522	5.1	-4	-4	5.9	.6	-1
South urban	M	212.324	213.304	212.387	212.650	5.4	-3	.1	5.6	.0	-4
Size A - More than 1,500,000	M	214.359	215.373	214.496	214.854	5.2	-2	.2	5.4	.1	-4
Size B/C - 50,000 to 1,500,000 ³	M	134.980	135.643	135.004	135.093	5.3	-4	.1	5.6	.0	-5
Size D - Nonmetropolitan (less than 50,000)	M	214.739	215.274	214.655	215.258	7.1	.0	.3	6.9	.0	-3
West urban	M	223.040	223.867	222.823	222.132	4.3	-8	-3	4.9	-1	-5
Size A - More than 1,500,000	M	226.767	227.562	226.541	225.910	4.4	-7	-3	5.0	-1	-4
Size B/C - 50,000 to 1,500,000 ³	M	135.283	136.021	135.207	134.834	4.5	-9	-3	4.9	-1	-6
Size classes											
A ⁴	M	199.840	200.941	200.278	199.982	4.7	-5	-1	5.2	.2	-3
B/C ³	M	135.330	136.055	135.315	135.160	5.2	-7	-1	5.5	.0	-5
D	M	211.989	212.555	212.138	211.740	5.4	-4	-2	5.9	.1	-2
Selected local areas⁵											
Chicago-Gary-Kenosha, IL-IN-WI	M	215.738	217.459	215.971	215.465	4.4	-9	-2	4.9	.1	-7
Los Angeles-Riverside-Orange County, CA ...	M	229.033	229.886	228.484	227.449	4.5	-1.1	-5	5.1	-2	-6
New York-Northern N.J.-Long Island, NY-NJ-CT-PA	M	238.580	240.273	240.550	240.089	5.2	-1	-2	5.4	.8	.1
Boston-Brockton-Nashua, MA-NH-ME-CT	1	-	241.258	-	238.519	4.7	-1.1	-	-	-	-
Cleveland-Akron, OH	1	-	206.941	-	206.219	4.7	-3	-	-	-	-
Dallas-Fort Worth, TX	1	-	206.413	-	205.883	5.7	-3	-	-	-	-
Washington-Baltimore, DC-MD-VA-WV ⁶	1	-	142.065	-	142.036	5.5	.0	-	-	-	-
Atlanta, GA	2	212.032	-	211.404	-	-	-	-	5.0	-3	-
Detroit-Ann Arbor-Flint, MI	2	207.593	-	209.484	-	-	-	-	4.9	.9	-
Houston-Galveston-Brazoria, TX	2	193.567	-	192.723	-	-	-	-	4.9	-4	-
Miami-Fort Lauderdale, FL	2	225.079	-	225.473	-	-	-	-	5.8	.2	-
Philadelphia-Wilmington-Atlantic City, PA-NJ-DE-MD	2	228.408	-	228.337	-	-	-	-	4.4	.0	-
San Francisco-Oakland-San Jose, CA	2	225.181	-	225.411	-	-	-	-	4.2	.1	-
Seattle-Tacoma-Bremerton, WA	2	228.068	-	227.745	-	-	-	-	5.4	-1	-

¹ Foods, fuels, and several other items priced every month in all areas; most other goods and services priced as indicated:

- M - Every month.
- 1 - January, March, May, July, September, and November.
- 2 - February, April, June, August, October, and December.

² Regions defined as the four Census regions.

³ Indexes on a December 1996=100 base.

⁴ Indexes on a December 1986=100 base.

⁵ In addition, the following metropolitan areas are published semiannually and appear in Tables 34 and 39 of the January and July issues of the CPI Detailed Report: Anchorage, AK; Cincinnati-Hamilton, OH-KY-IN; Denver-Boulder-Greeley, CO; Honolulu, HI; Kansas City, MO-KS; Milwaukee-Racine, WI; Minneapolis-St. Paul, MN-WI; Phoenix-Mesa, AZ;

Pittsburgh, PA; Portland-Salem, OR-WA; St. Louis, MO-IL; San Diego, CA; Tampa-St. Petersburg-Clearwater, FL.

⁶ Indexes on a November 1996=100 base.
- Data not available.

NOTE: Local area indexes are byproducts of the national CPI program. Each local index has a smaller sample size than the national index and is, therefore, subject to substantially more sampling and other measurement error. As a result, local area indexes show greater volatility than the national index, although their long-term trends are similar. Therefore, the Bureau of Labor Statistics strongly urges users to consider adopting the national average CPI for use in their escalator clauses.

NOTE: Index applies to a month as a whole, not to any specific date.

Table 4. Consumer Price Index for All Urban Consumers (CPI-U): Regions¹, by expenditure category and commodity and service group

(1982-84=100, unless otherwise noted)

Item and group	Northeast			Midwest			South			West		
	Index	Percent change from—		Index	Percent change from—		Index	Percent change from—		Index	Percent change from—	
		Sep. 2008	Sep. 2007		Aug. 2008	Sep. 2008		Sep. 2007	Aug. 2008		Sep. 2008	Sep. 2007
Expenditure category												
All items	232.841	5.2	-0.4	209.252	4.8	0.0	212.650	5.4	0.1	222.132	4.3	-0.3
All items (December 1977=100)	366.653	-	-	340.465	-	-	344.947	-	-	359.064	-	-
Food and beverages	222.510	6.2	.8	211.122	6.5	.6	215.049	5.9	.5	222.465	5.6	.4
Food	222.287	6.4	.9	210.986	6.8	.6	215.831	6.1	.5	222.005	5.8	.4
Food at home	223.897	7.8	.9	208.642	8.1	.8	214.855	7.3	.5	228.134	7.3	.4
Food away from home	223.347	4.6	.8	215.188	5.0	.4	220.484	4.6	.5	213.231	3.9	.4
Alcoholic beverages	224.228	4.7	.2	212.280	3.3	.4	203.064	3.3	.6	226.703	3.4	.5
Housing	244.361	3.9	-1.3	198.956	2.8	-6	202.951	4.2	-1	228.805	2.8	.0
Shelter	287.076	2.3	-6	224.634	.9	-2	221.545	3.0	.0	256.149	2.7	.2
Rent of primary residence ²	276.956	4.1	.2	216.235	2.3	.3	220.882	4.1	.3	256.817	3.9	.4
Owners' equivalent rent of primary residence ^{2 3}	294.573	1.7	.1	226.709	1.1	.2	223.725	3.0	.2	268.801	3.2	.4
Fuels and utilities	237.234	15.7	-5.7	223.127	13.4	-3.4	231.671	12.2	-1.3	232.056	5.2	-2.6
Household energy	224.987	16.8	-6.4	201.460	14.8	-3.9	205.462	13.5	-1.6	218.748	5.1	-3.4
Gas (piped) and electricity ²	216.936	10.6	-6.4	207.372	14.2	-4.0	205.399	12.6	-1.5	219.737	4.3	-3.4
Electricity ²	197.014	6.8	-6.0	177.246	5.9	.5	194.994	11.0	.1	226.335	3.7	-.2
Utility (piped) gas service ²	251.863	17.6	-7.4	258.398	26.7	-9.6	257.124	21.0	-8.8	221.909	5.6	-11.5
Household furnishings and operations	128.767	.8	.0	122.103	2.2	.0	128.350	2.3	.8	134.951	1.9	.6
Apparel	123.837	2.6	7.2	115.572	3.8	4.5	131.481	1.3	2.9	111.784	-.8	2.8
Transportation	200.550	10.3	-1.7	207.735	10.1	-.8	204.357	11.6	-.4	202.514	9.6	-2.8
Private transportation	194.266	10.3	-1.7	202.521	9.9	-.6	202.663	11.5	-.3	196.009	9.2	-2.8
New and used motor vehicles ⁴	92.466	.0	.1	93.729	-.5	-1.1	92.310	-2.7	-.8	91.832	-2.2	-1.3
New vehicles	132.905	-.7	-.4	127.903	-1.7	-1.1	136.013	-2.5	-.3	131.419	-2.1	-1.2
New cars and trucks ^{4 5}	92.093	-.9	-.4	90.269	-1.5	-1.1	92.516	-2.5	-.3	91.364	-2.1	-1.2
New cars ⁵	132.657	-.2	.1	129.700	1.1	-.6	140.979	-.5	.0	135.188	.9	-.9
Used cars and trucks	138.085	-2.8	-1.8	134.485	-2.4	-1.7	131.334	-3.7	-1.9	130.710	-3.0	-1.8
Motor fuel	299.487	31.5	-4.9	329.561	26.7	-.6	321.149	35.3	-.2	304.860	32.0	-6.4
Gasoline (all types)	297.278	31.3	-4.9	328.783	26.9	-.3	319.382	35.3	.2	303.302	31.9	-6.3
Gasoline, unleaded regular ⁵	299.584	31.8	-4.9	328.262	27.2	-.4	320.378	35.8	.4	303.249	32.5	-6.4
Gasoline, unleaded midgrade ^{5 6}	301.735	30.7	-4.7	358.501	26.9	.0	329.729	34.7	.1	282.985	31.2	-6.2
Gasoline, unleaded premium ⁵	285.714	29.4	-4.5	319.110	25.5	-.3	309.412	33.3	-.3	286.611	30.1	-6.0
Medical care	388.311	3.2	.1	362.755	2.2	.4	348.105	3.5	.0	370.387	3.7	.2
Medical care commodities	319.816	3.2	.3	291.854	-.2	.5	282.119	1.5	-.2	299.341	1.4	.2
Medical care services	406.351	3.2	.0	386.273	3.1	.4	370.008	4.3	.0	391.862	4.4	.2
Professional services	318.319	2.9	-.2	330.155	3.2	.3	309.657	3.4	.0	293.476	3.7	.1
Recreation ⁴	116.159	2.5	.1	115.772	3.5	.4	114.782	2.4	.2	109.857	1.3	.2
Education and communication ⁴	129.150	4.8	.6	127.070	3.2	.6	121.500	2.9	.6	125.217	3.3	.9
Other goods and services	374.085	4.9	.2	335.242	3.8	.1	335.877	3.6	.7	349.167	3.9	.3
Commodity and service group												
All items	232.841	5.2	-.4	209.252	4.8	.0	212.650	5.4	.1	222.132	4.3	-.3
Commodities	184.296	7.4	.0	175.847	6.7	.4	180.861	7.0	.3	175.951	5.5	-.8
Commodities less food and beverages	160.541	8.2	-.5	157.086	6.9	.3	162.475	7.7	.2	150.490	5.5	-1.4
Nondurables less food and beverages	206.859	14.3	-.4	206.256	11.7	.8	216.887	14.4	.6	195.424	11.9	-1.9
Nondurables less food, beverages, and apparel	271.460	18.8	-2.6	265.132	14.1	-.2	269.144	18.6	.0	253.934	16.3	-3.2
Durables	108.547	-1.4	-.7	108.614	-.5	-.6	112.239	-1.8	-.5	110.376	-1.9	-.8
Services	280.369	3.7	-.7	244.079	3.3	-.4	245.223	4.3	.0	263.890	3.5	.0
Rent of shelter ³	300.282	2.3	-.6	230.940	.9	-.2	227.867	3.0	.0	272.461	2.7	-.2
Transportation services	236.388	6.2	.5	254.702	6.2	-.6	252.406	5.1	-.4	251.865	6.1	-.6
Other services	320.066	4.3	.4	291.722	3.7	.5	289.766	3.6	.7	296.457	3.9	.6

See footnotes at end of table.

Table 4. Consumer Price Index for All Urban Consumers (CPI-U): Regions¹, by expenditure category and commodity and service group-Continued

(1982-84=100, unless otherwise noted)

Item and group	Northeast			Midwest			South			West		
	Index Sep. 2008	Percent change from—		Index Sep. 2008	Percent change from—		Index Sep. 2008	Percent change from—		Index Sep. 2008	Percent change from—	
		Sep. 2007	Aug. 2008		Sep. 2007	Aug. 2008		Sep. 2007	Aug. 2008		Sep. 2007	Aug. 2008
Special aggregate indexes												
All items less medical care	225.727	5.3	-0.4	201.705	5.0	-0.1	204.519	5.6	0.1	214.911	4.4	-0.3
All items less food	234.989	5.0	-6	208.884	4.4	-2	211.992	5.3	.1	222.305	4.1	-4
All items less shelter	214.843	6.7	-3	205.904	6.4	.0	210.487	6.5	.2	209.647	5.2	-6
Commodities less food	163.107	8.1	-5	158.984	6.7	.3	163.940	7.5	.2	153.624	5.4	-1.3
Nondurables	215.725	10.1	.2	209.518	9.1	.7	216.640	10.2	.6	210.474	8.7	-8
Nondurables less food	207.747	13.6	-4	206.322	11.1	.8	215.959	13.7	.6	198.173	11.3	-1.7
Nondurables less food and apparel	264.637	17.4	-2.4	258.835	13.1	-2	262.312	17.4	.1	250.678	15.1	-2.9
Services less rent of shelter ³	282.986	5.5	-8	272.503	5.8	-6	274.516	5.7	-1	282.377	4.7	-2
Services less medical care services	271.115	3.8	-7	232.810	3.4	-4	232.862	4.3	.0	254.343	3.5	.0
Energy	256.169	23.5	-5.7	257.484	21.2	-2.0	253.336	25.1	-7	270.952	21.4	-5.4
All items less energy	232.476	3.3	.3	206.277	2.9	.2	208.518	3.1	.2	220.061	2.9	.2
All items less food and energy	235.753	2.8	.1	206.005	2.1	.2	207.590	2.6	.2	220.391	2.4	.2
Commodities less food and energy commodities	144.267	1.3	1.3	139.408	1.5	.6	142.457	.2	.4	136.392	-.4	.2
Energy commodities	312.880	33.5	-5.2	328.589	26.7	-7	325.115	35.5	-2	308.252	31.9	-6.3
Services less energy services	286.706	3.2	-2	249.482	2.4	.0	249.035	3.6	.1	267.380	3.5	.2

¹ Regions defined as the four Census regions.

² This index series was calculated using a Laspeyres estimator. All other item stratum index series were calculated using a geometric means estimator.

³ Indexes on a December 1982=100 base.

⁴ Indexes on a December 1997=100 base.

⁵ Special index based on a substantially smaller sample.

⁶ Indexes on a December 1993=100 base.

- Data not available.

NOTE: Index applies to a month as a whole, not to any specific date.