

# Quarterly Workforce Indicators Update and Review

John M. Abowd and Bryce Stephens

January 29, 2003

U S C E N S U S B U R E A U

# Introduction

- Quarterly Workforce Indicators
- Data demonstration
- Version 3.0 Approach
- Future Research Direction

# The Quarterly Workforce Indicators

- Version 2.0
  - Employment and earnings statistics
  - Level of detail
- Version 3.0 (beta)
  - Employment and earnings statistics
  - Enhanced level of detail
  - Web interface

# Data Demonstration

U.S. Census Bureau

 **LEHD**  
LONGITUDINAL EMPLOYER~ HOUSEHOLD DYNAMICS

[ABOUT LEHD](#) | [RESEARCH](#) | [TECHNICAL DOCS](#) | [OTHER](#)

STATE PRODUCTS

- [QWI](#)
- [ENHANCED UI](#)
- [SUCC/PRED](#)
- [BULLETIN BOARD](#)
- [PARTNER STATES](#)
- [STAFF](#)
- [TEXT ONLY](#)
- [CONTACT LEHD](#)

 Data

 Employers

 Policy Planners

 Job Seekers

[Census 2000](#) | [Subjects A to Z](#) | [Search](#) | [Product Catalog](#) | [Data Access Tools](#) | [FOIA](#) | [Privacy · Policies](#) | [Contact Us](#) | [Home](#)

**USCENSUSBUREAU**  
*Helping You Make Informed Decisions*

USCENSUSBUREAU

# Objective in Developing Version 3.0

- Finest level of geographic and demographic detail possible
  - Location of place-of-work
  - Industry classification of place-of-work
- Core challenges:
  - 30%-40% of state-level employment is concentrated in multi-unit businesses. State-level data (except for MN) do not provide place-of-work for employees of these businesses.
  - Disclosure proofing

# Approach

- Identify two relationships that help explain the likelihood of the physical location of work, given the identity of the multi-unit employer
  - Physical distance between place-of-residence and place-of-work
  - Distribution of employment within a business entity
- Example

# Data

- ES-202 data provide us with 3 important firm (SEIN) characteristics
  - Economic structure of business
  - Geography
  - Distribution of employment within SEINs
- UI wage data provide
  - Employer identifier (SEIN)
  - Employment history of worker
  - Person identifier
- CPR (IRS/Census/CMS)
  - Person identifier
  - Place of residence

# Model Specification, Estimation, and Application

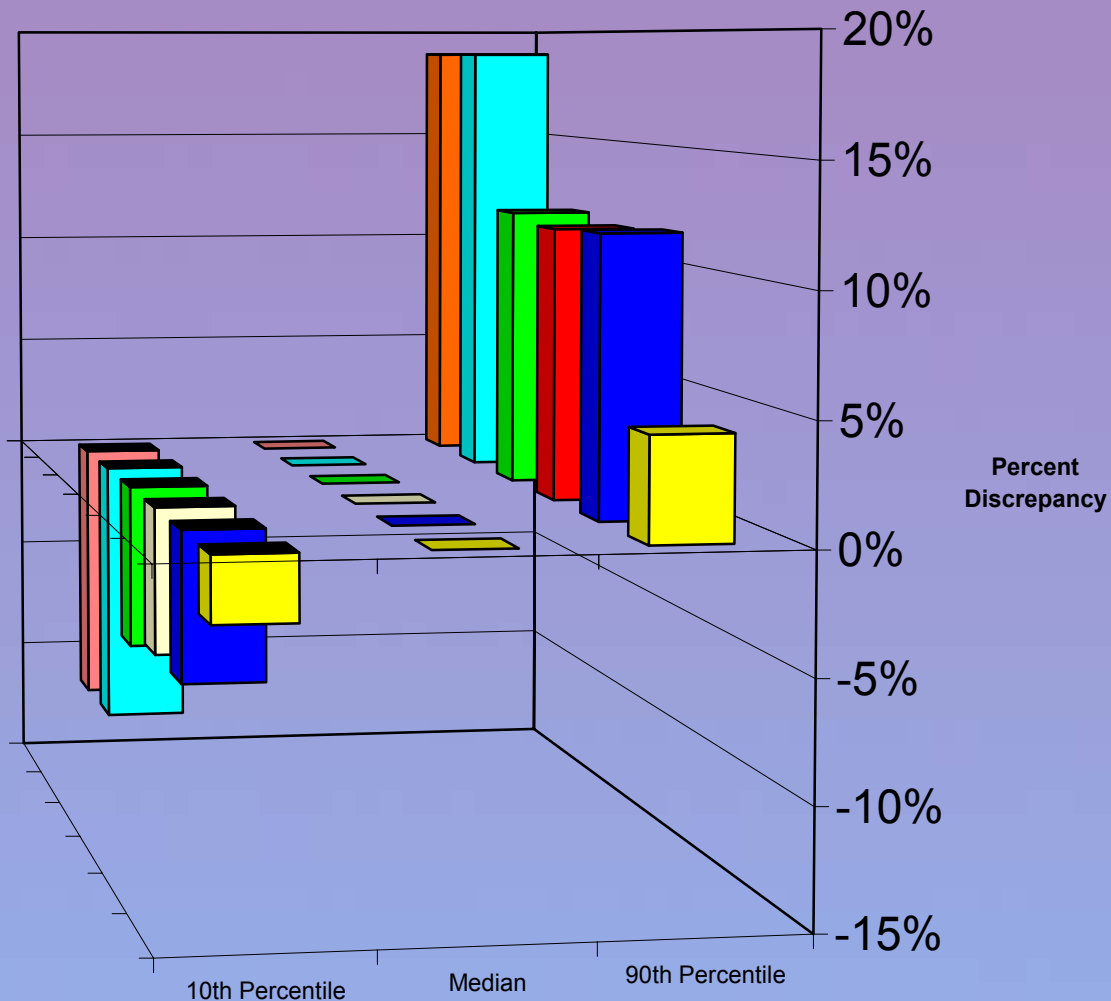
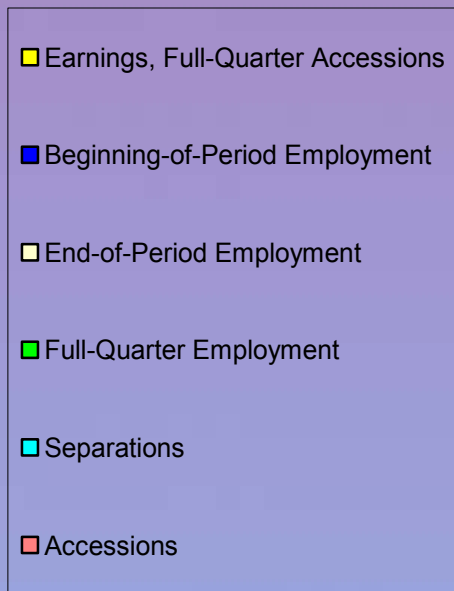
- Estimate probability of employment at a particular reporting unit using MN UI data. Key factors include:
  - Distance between individual residence and establishment location
  - Number of employees
- Key points
  - Identify feasible units
  - Suppress false labor market transitions
  - Estimate at the *time of separation* of a worker from employing firm
- Apply parameter estimates to partner states' data
- Generate QWIs



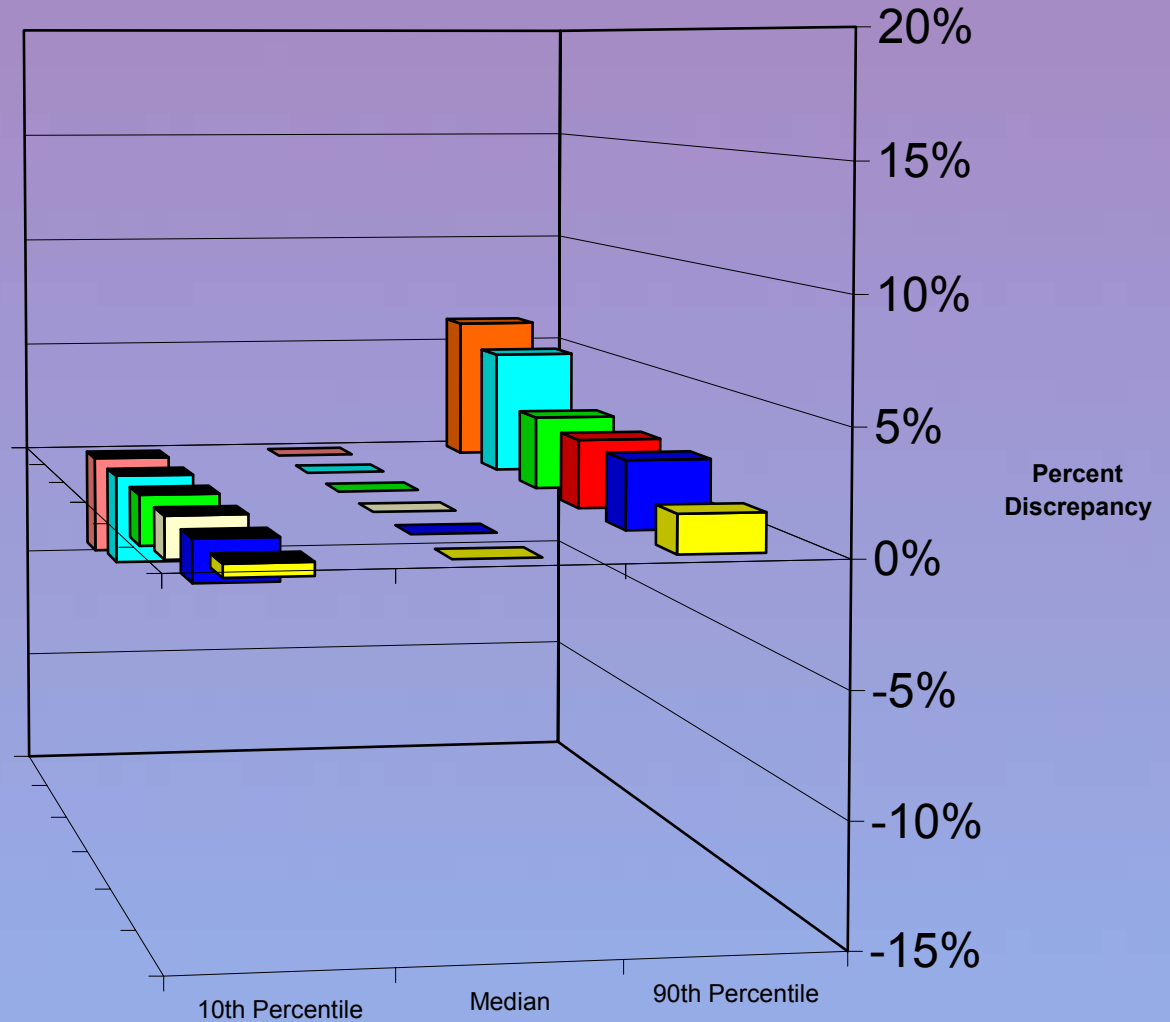
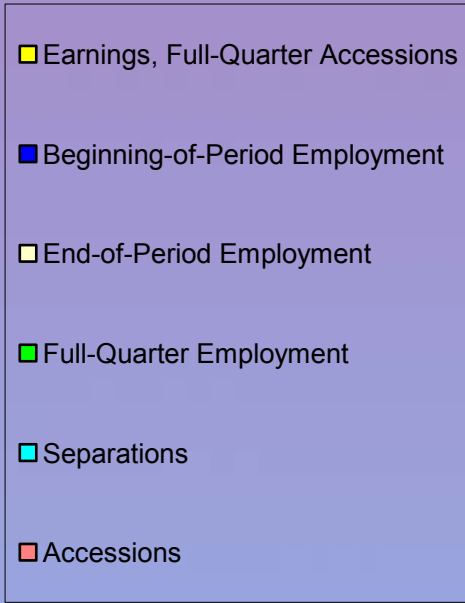
# Quality Assurance: Results of Benchmarking

U S C E N S U S B U R E A U

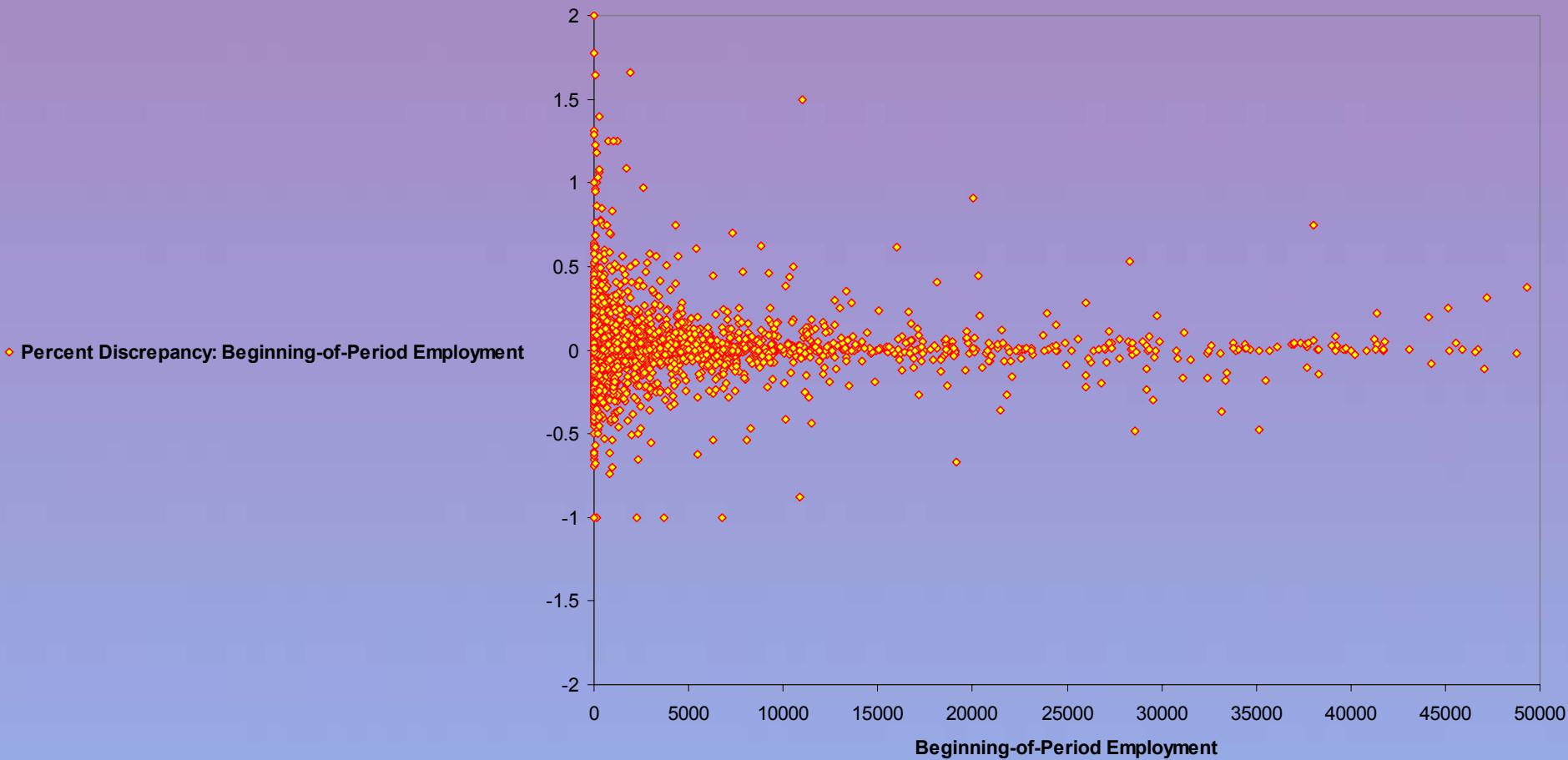
# MN Known Unit vs. MN Imputed Unit Unweighted



# MN Known Unit vs. MN Imputed Unit Weighted

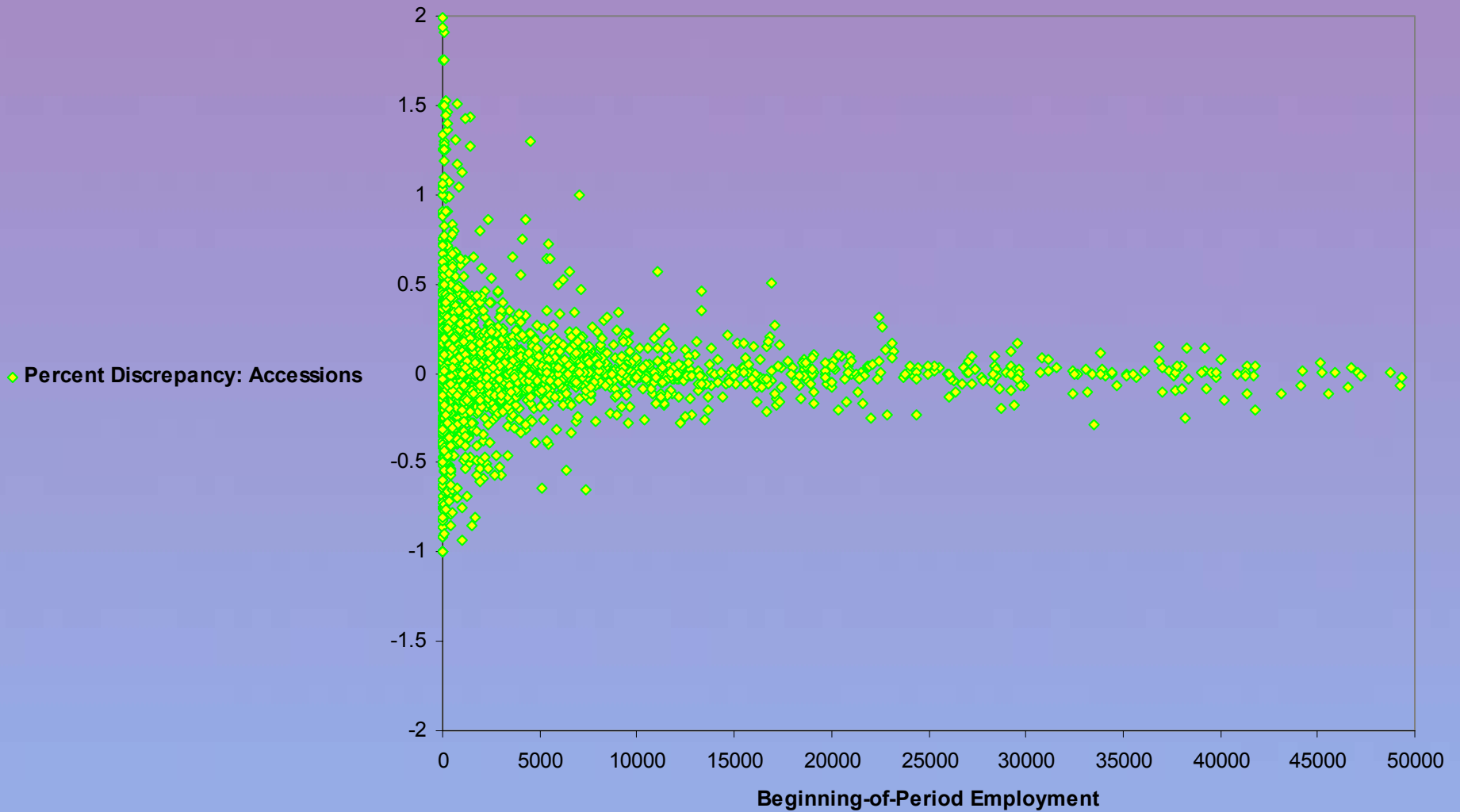


### MN Known Unit vs. MN Imputed Unit Across Workforce Investment Areas



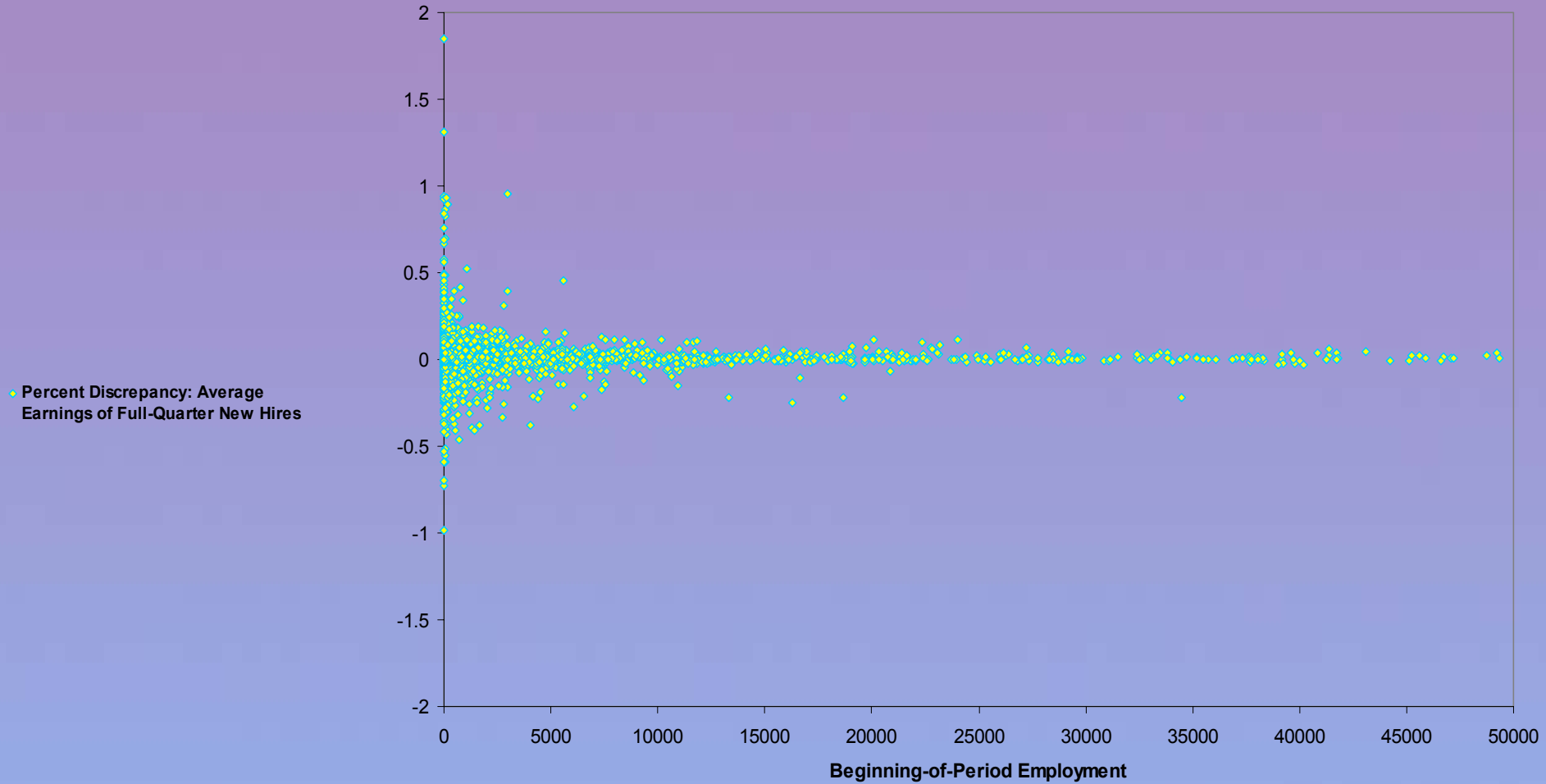
U S C E N S U S B U R E A U

# MN Known Unit vs. MN Imputed Unit Across Workforce Investment Areas



U S C E N S U S B U R E A U

# MN Known Unit vs. MN Imputed Unit Across Workforce Investment Areas



U S C E N S U S B U R E A U

# Research Direction

- Under-Coverage of UI Wage Records
  - Due to universe discrepancies
  - Due to problematic quarters (data quality)
    - Defective archives
    - Incomplete most recent quarter reports
- Continued improvement of imputation methodology
- Additional Demographic Characteristics