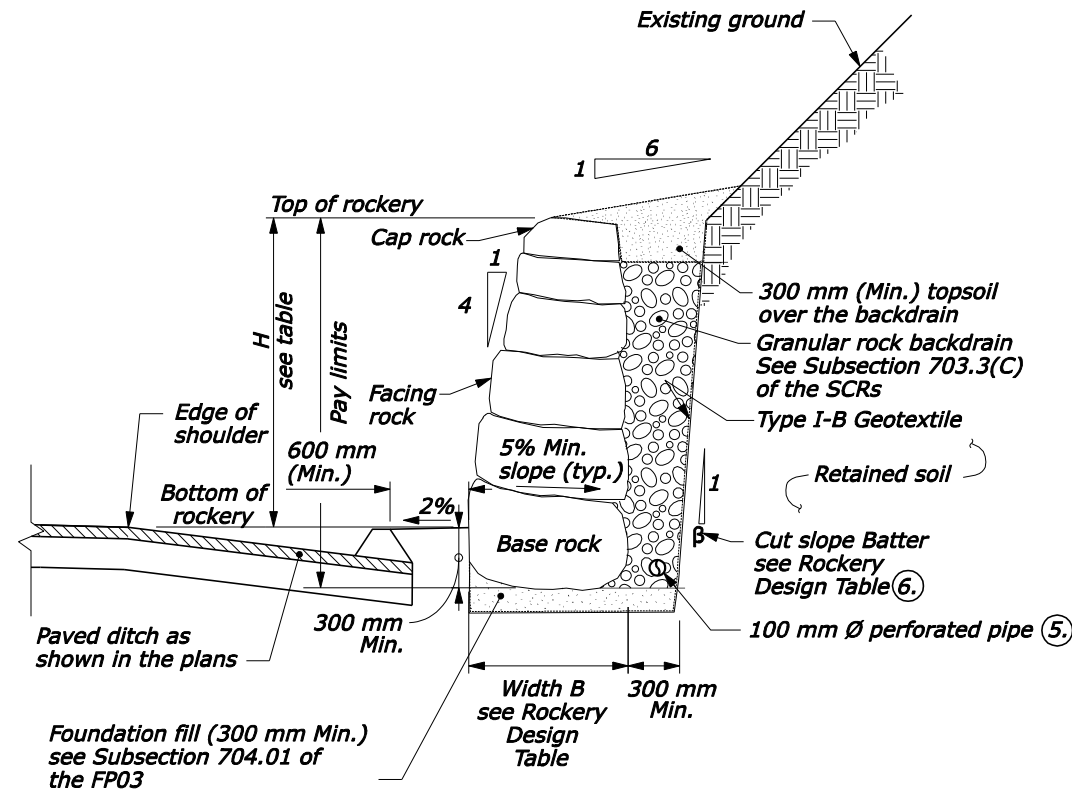


**ROCKERY WITH RIPRAP-LINED DITCH
TYPICAL SECTION**



**ROCKERY WITH PAVED DITCH
TYPICAL SECTION**

NOTE:

- Construct rockery and place base, facing, and cap rocks according to Section 252 of the SCRs. Place each rock individually by equipment suitable for lifting, manipulating, and placing rocks of the size and shape specified. Ensure that each rock is firmly set and supported by underlying materials and adjacent rocks. Reposition or replace loose rocks.
- A maximum tolerance of 6 inches may be applied toward the total base rock width. Use rock with minimum L of 5 feet 6 inches. Do not consecutively place base rocks with widths less than B.
- Place base, facing, and cap rocks so that their height dimension is not greater than their width. The longest dimension of the base, facing, and cap rocks is parallel to face of rockery.
- Where loose, soft, or otherwise unsuitable foundation soil conditions are encountered, contact the CO for supplemental recommendations.
- Surround the perforated pipe on all sides by at least 4 inches of permeable backfill according to Subsection 703.04.

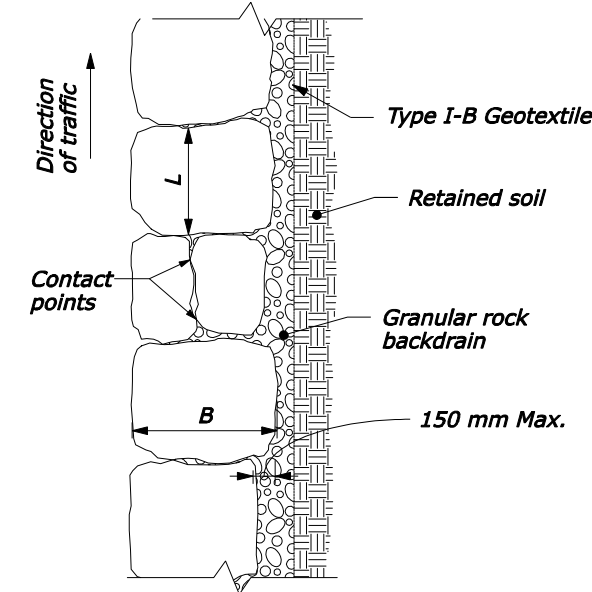
Discharge outlet pipes to a protected outlet or other permanent drainage structure at low points in the rockery and at 100 feet (max.) spacing.
- Stability of temporary cut slopes is the responsibility of the Contractor.
- Do not construct rockeries or slopes exceeding the heights shown on the Rockery Design Table without prior written approval by the CO.
- Construct rockeries parallel to curb grade unless otherwise noted.

ROCKERY DESIGN TABLE							
STATION	LT/RT TIER	MAX. HEIGHT H (m)	MIN. BASE ROCK WIDTH B (m)	MIN. CUT SLOPE BATTER β V:H	MIN. ROCK WEIGHT (kg)		
					CAP ROCK	BASE ROCK	
BEGIN	END						

Rockery Design Data:

Friction angle, $\phi = \text{---}^\circ$
 Cohesion, $c = 0$
 Bulk unit weight, $\gamma_R = 23.5 \text{ kN/m}^3$
 Allowable bearing pressure = $\text{---} \text{ KPa}$

(A) Minimum cut slope for design purposes only. Actual cut slope batter may be greater (6).



**BASE ROCK
PLAN VIEW**
See Note 2

4/2/2008 1:22:41 PM L:\DESIGN\AD2\CFL Details Team\1Web Ready\14_9_08\sp252-A.dgn

NOT TO SCALE