

**State Water Resources Control Board
Groundwater Ambient Monitoring and Assessment (GAMA) Program
Priority Basin Project**

Tahoe/Martis Study Unit and Sierra Regional Informational Meeting

Tuesday, May 27th, 2008
10:00 am – 12:30 pm
USFS Lake Tahoe Basin Management Unit
35 College Drive
South Lake Tahoe, CA 96150

AGENDA

- Introductions; Meeting Overview
- GAMA Program Overview:
State Water Board
- Study Unit Assessment Review:
US Geological Survey
- Wrap-up and Adjourn

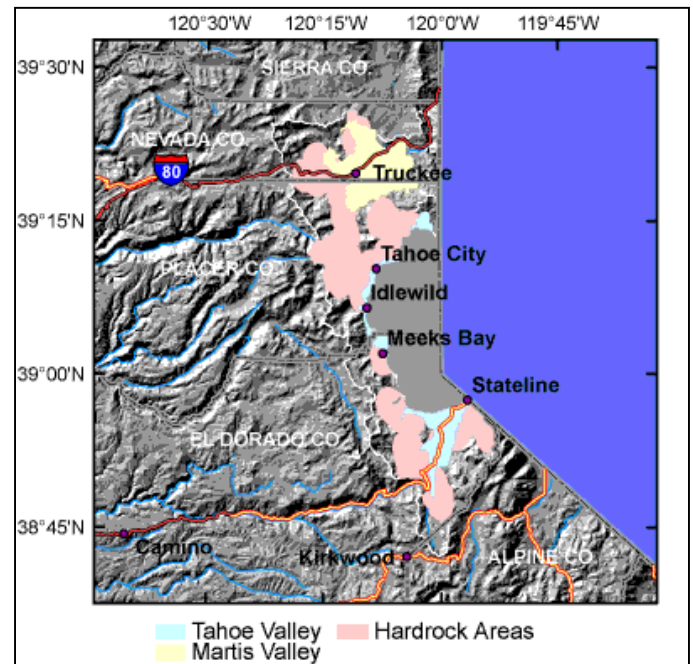
Background: The Tahoe/Martis study unit includes the groundwater basins of: Tahoe Valley (North, West, and South), Martis (Truckee) Valley and areas outside of groundwater basins. The Sierra Regional Study Unit consists of one study area encompassing the entire Sierra Nevada. Portions of 23 of the 58 counties in the State of California are within the study unit. The GAMA Program was created as a result of groundwater quality concerns by its citizens and leaders. The main objectives of the GAMA Program are to improve statewide ambient groundwater quality monitoring and assessment and to increase the availability of information about groundwater quality to the public. Stewardship of the state's groundwater resources is the shared responsibility of all levels of the government and community. Participation in the GAMA Program is voluntary.

Directions:

See next page for map.

Note:

Meeting date is subject to change. Please confirm your attendance with Julie Saturnio at 916 341-5860 or jsaturnio@waterboards.ca.gov. For more information, please visit www.waterboards.ca.gov/gama or contact John Borkovich (GAMA Program Manager) at jborkovich@waterboards.ca.gov.



Revised May 15, 2008

USFS Lake Tahoe Basin Management Unit
35 College Drive
South Lake Tahoe, CA 96150



Directions to the Lake Tahoe Basin Management Unit:

Traveling East on Highway 50

<http://maps.google.com/maps?f=d&hl=en&geocode=2221600482588714817.38.931305,-119.972530&saddr=sacramento,+ca&daddr=38.931305,-119.972806&sl=38.928167,-119.970489&sspn=0.012202,0.019226&ie=UTF8&ll=38.924595,-119.982204&spn=0.024406,0.038452&z=15>

- Head east on US-50 toward South Lake Tahoe (94.8 mi)
- Turn right at Al Tahoe Blvd (0.4 miles)
- Turn right at College Dr (0.4 miles)
- Building is on your right

Traveling South from Tahoe City

<http://maps.google.com/maps?f=d&hl=en&geocode=10124251402790474427.38.931305,-119.972806&saddr=tahoe+city,+ca&daddr=38.931305,-119.972806&sl=38.92603,-119.977441&sspn=0.024405,0.038452&ie=UTF8&ll=38.926364,-119.955854&spn=0.048811,0.076904&z=14>

- Travel Hwy 89 South (27.2 mi)
- Turn left at Lake Tahoe Blvd/Hwy 50 (2.1 mi)
- Turn right at Al Tahoe Blvd (0.4 miles)
- Turn right at College Dr (0.4 miles)
- Building is on your right