
Figures

Chapter 7 - East Branch of the Grand Calumet River - II

Figure 7.1. Location of sampling stations for surficial sediment chemistry in the EBGCR-II.

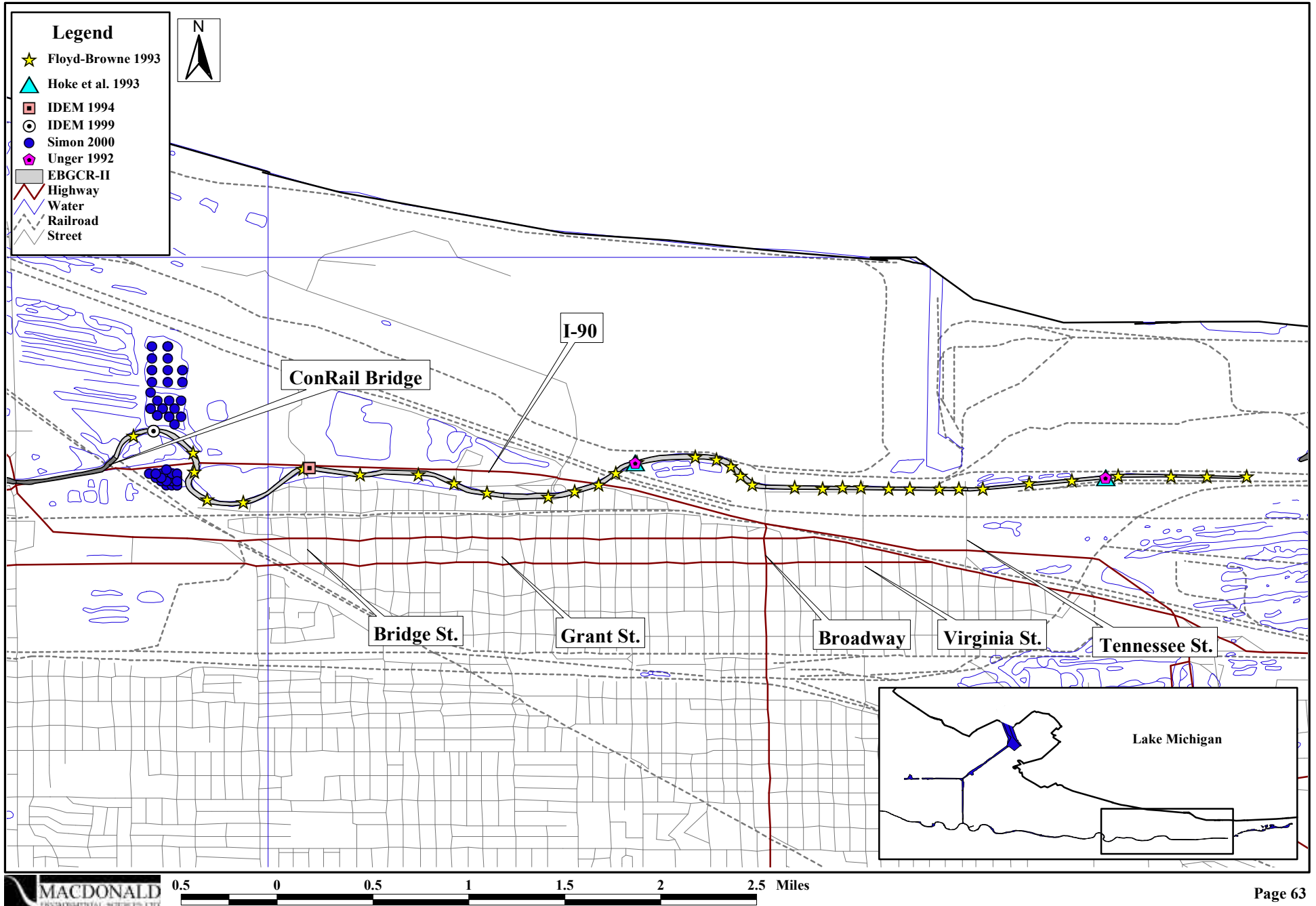


Figure 7.2. Location of sampling stations for sub-surface sediment chemistry in the EBGCR-II.

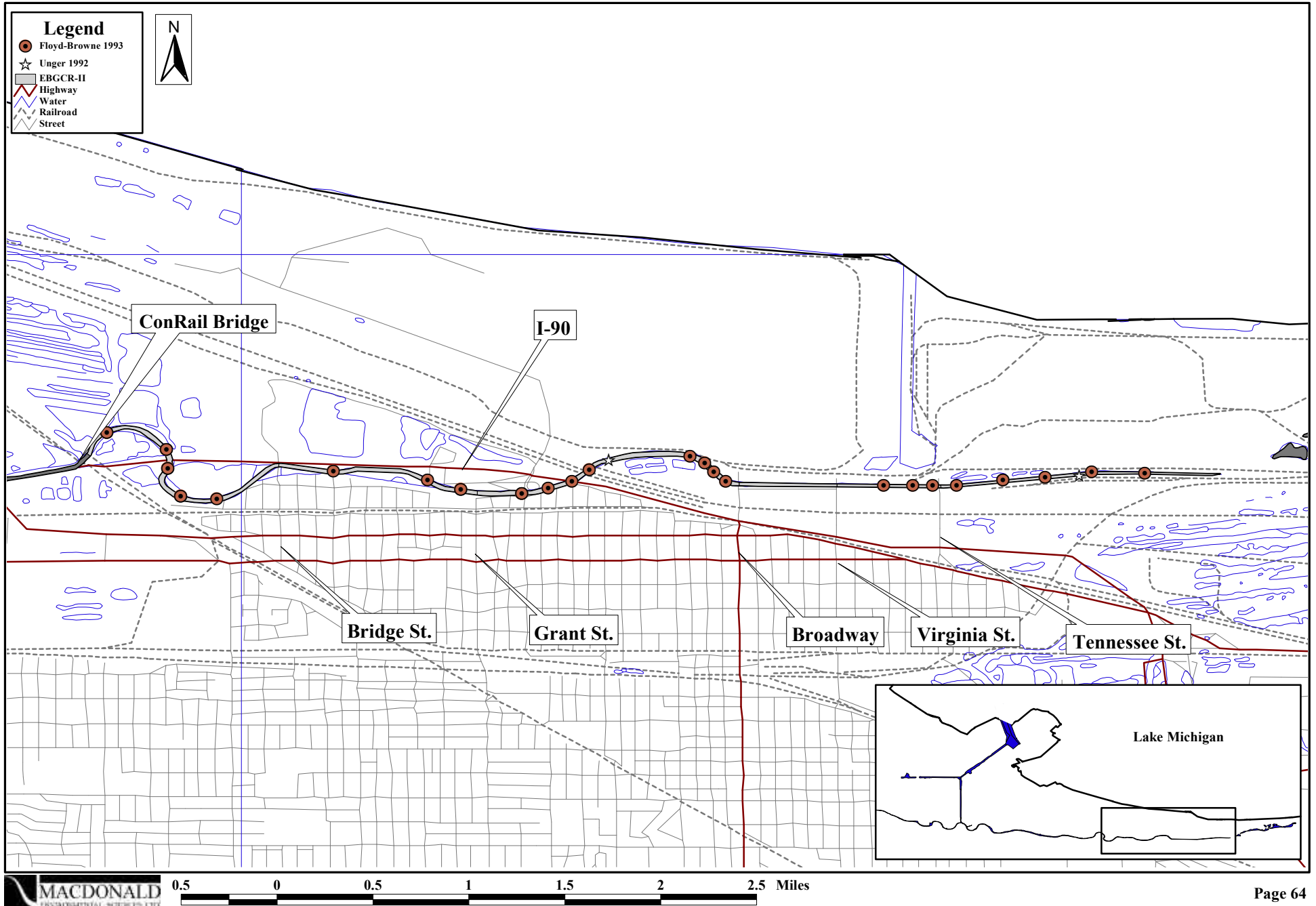


Figure 7.3. Location of sampling stations for sediment toxicity testing in the EBGCR-II.

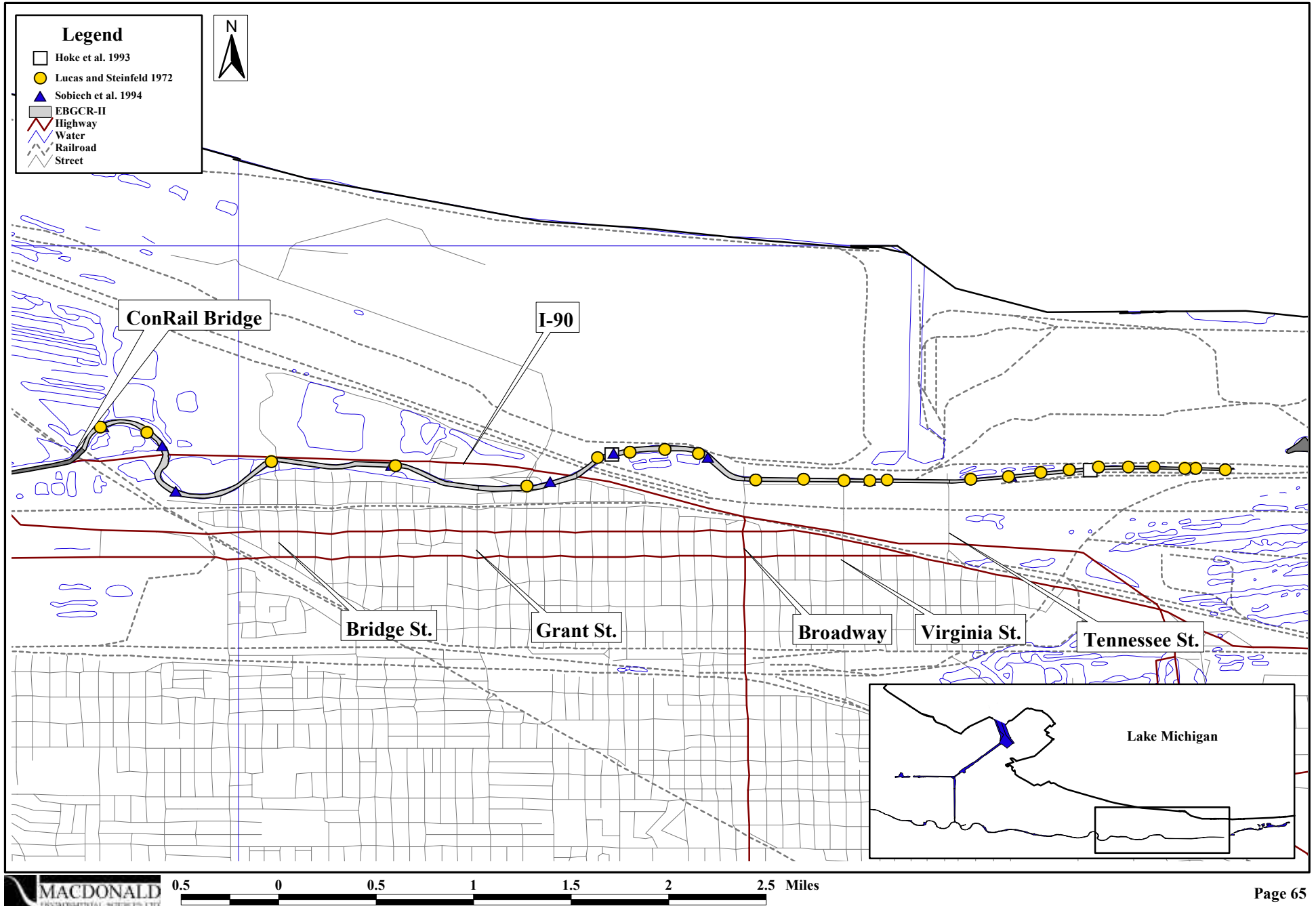


Figure 7.4. Areal extent of altered benthic invertebrate communities in the EBGCR-II.

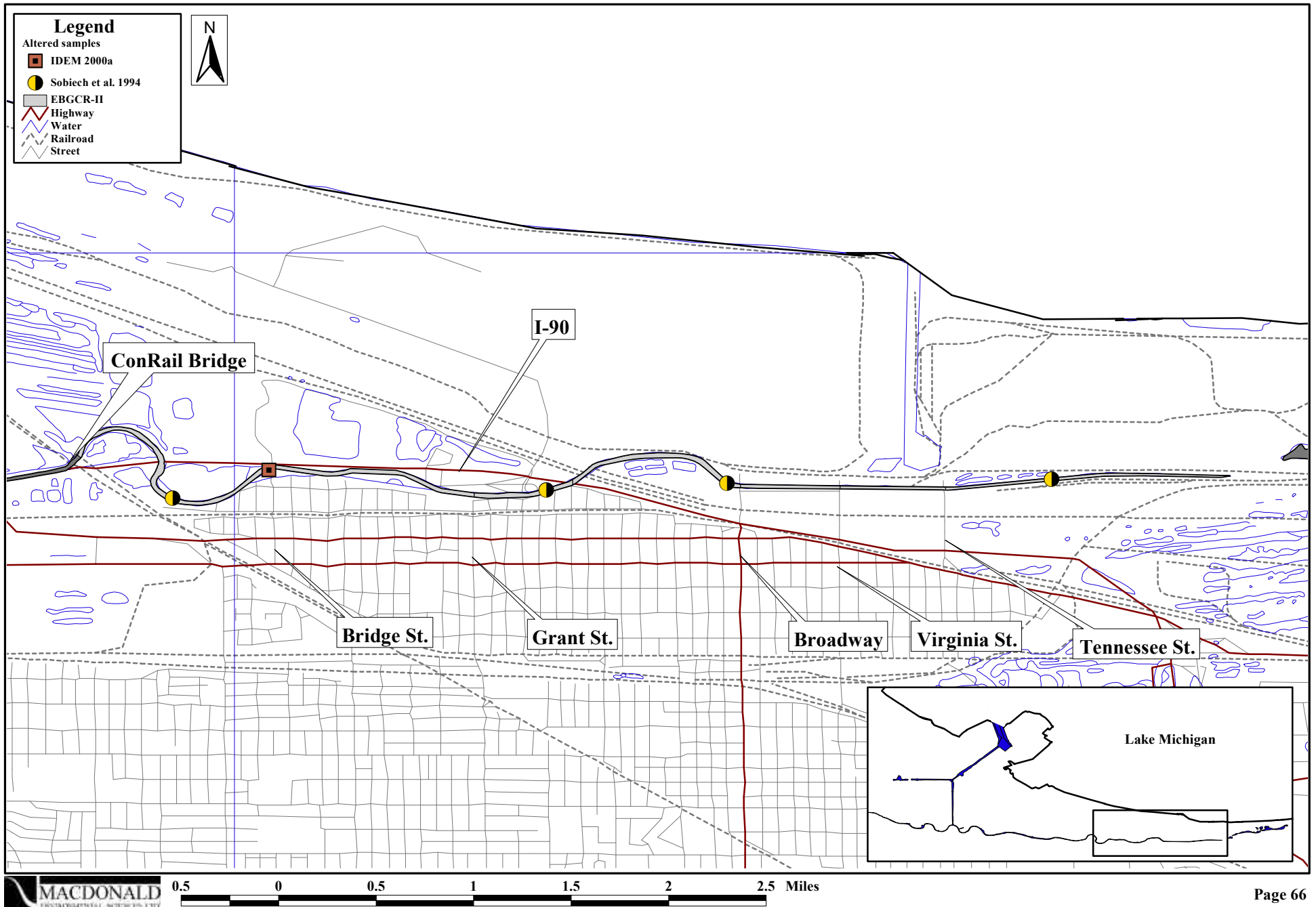


Figure 7.5. Location of sampling stations for tissue chemistry in the EBGCR-II.

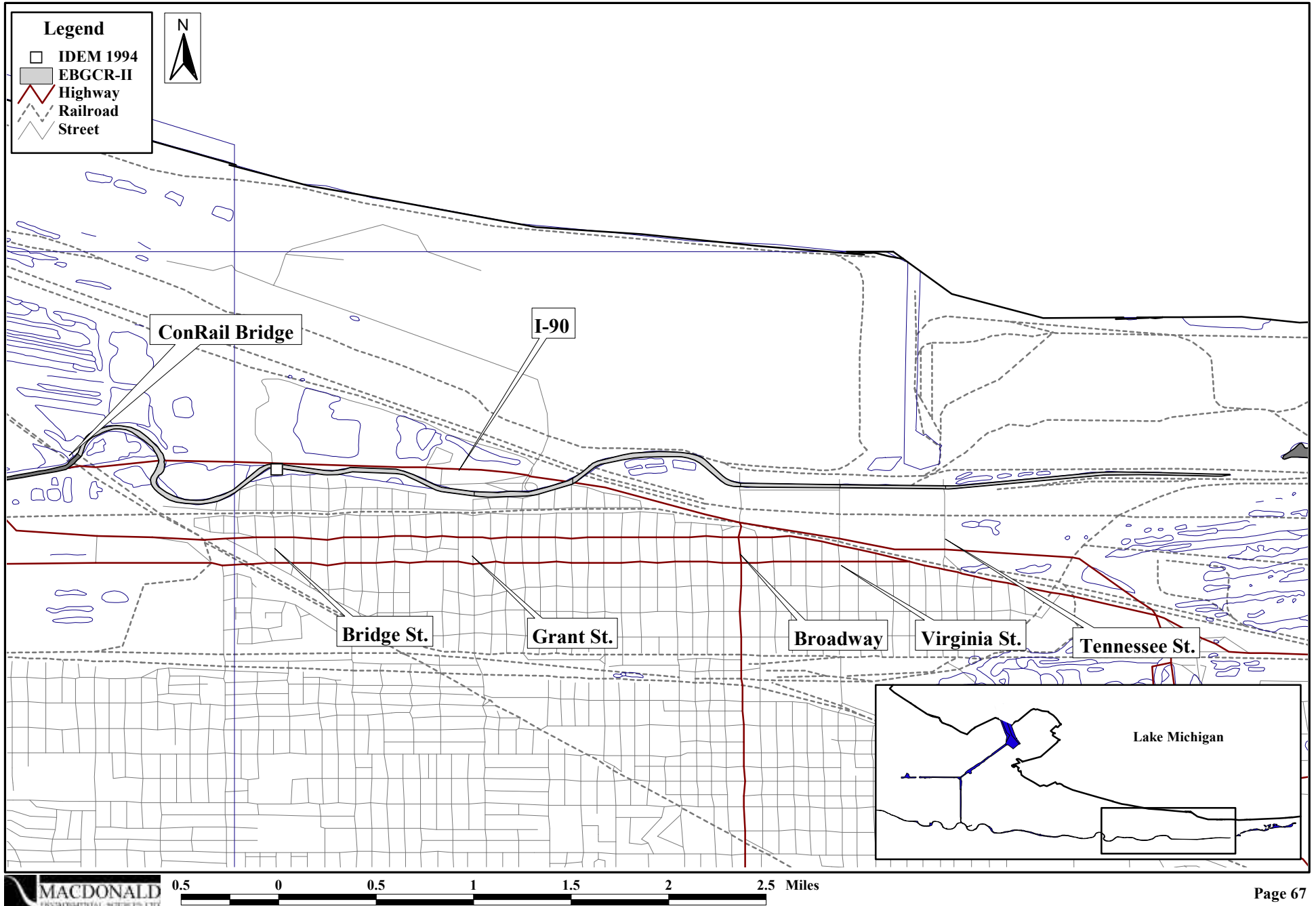


Figure 7.6. Spatial distribution of mean PEC-Qs in surficial sediments within the EBGCR-II.

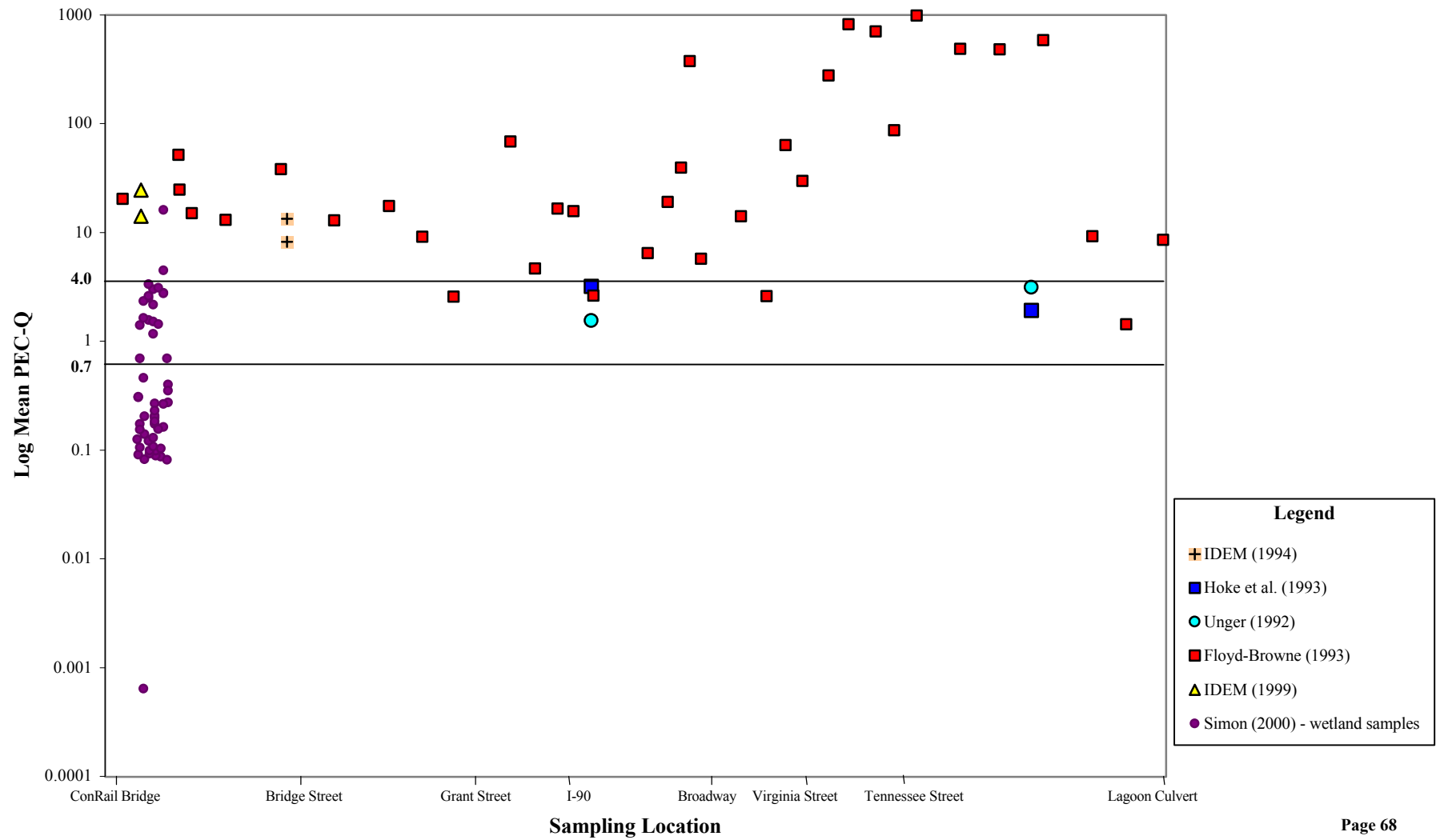


Figure 7.7. Areal extent of injury to surficial sediments in the EBGCR-II.

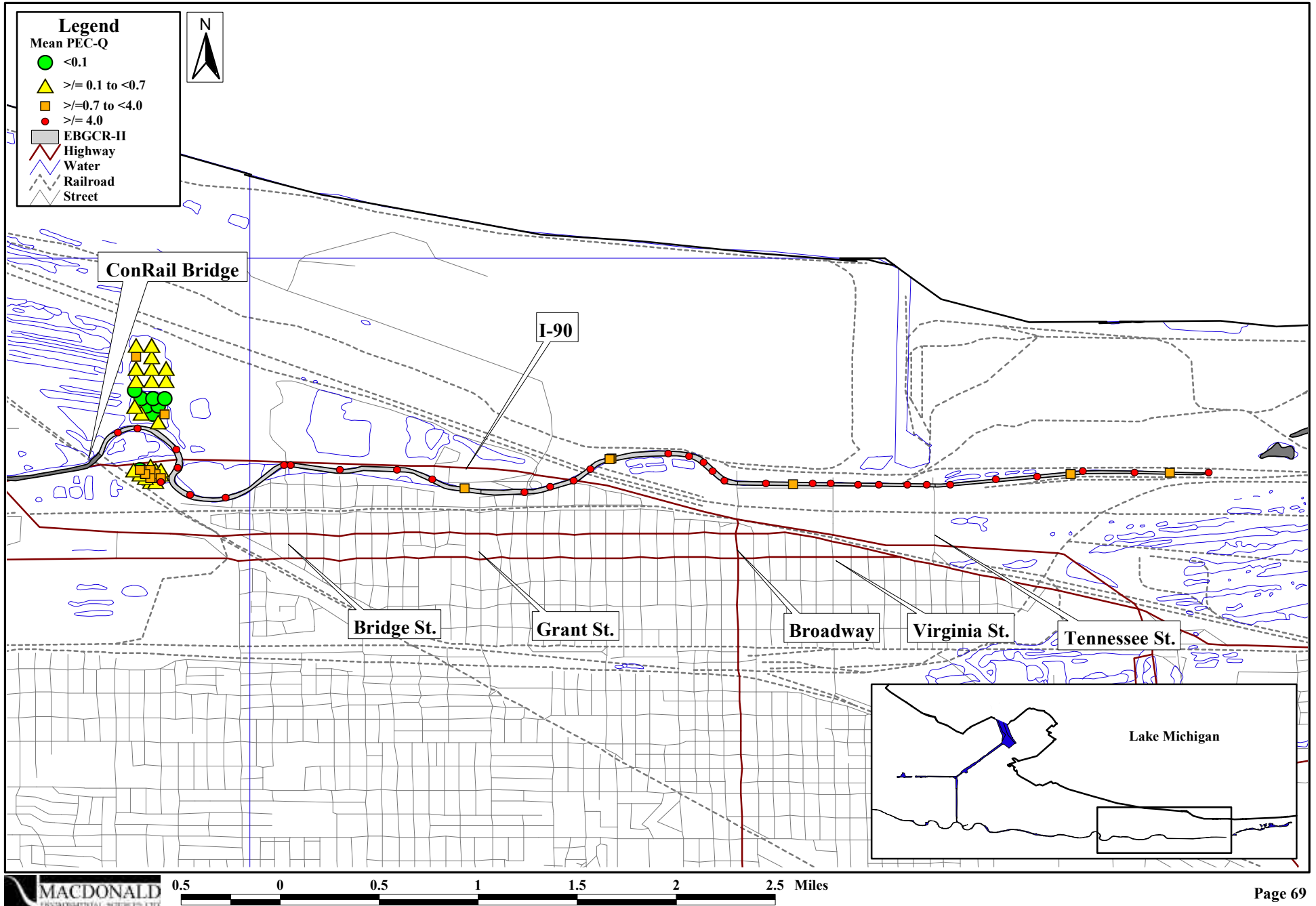


Figure 7.8. Spatial distribution of mean PEC-Qs in sub-surface sediments within the the EBGCR-II.

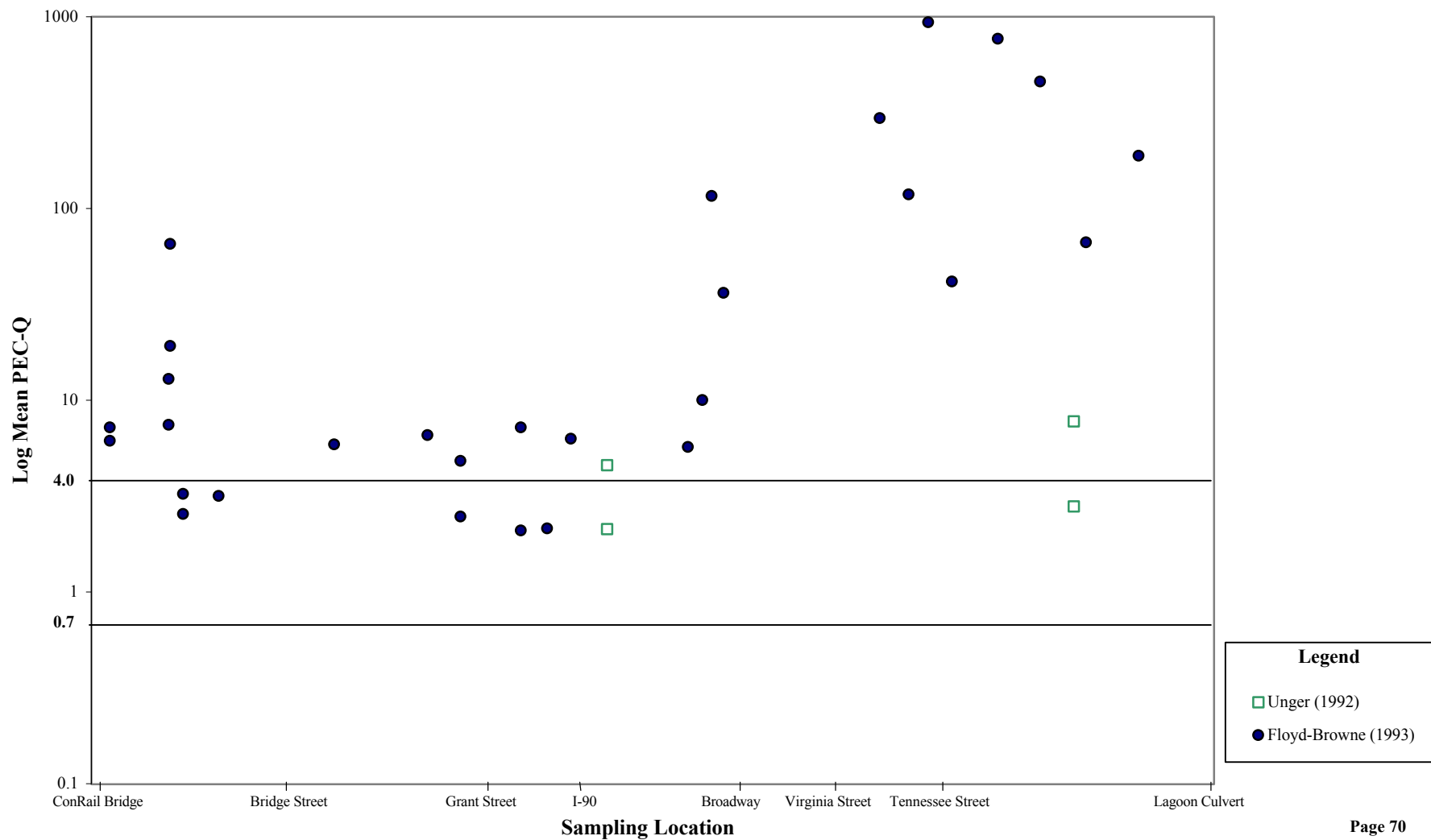


Figure 7.9. Areal extent of injury to sub-surface sediments in the EBGCR-II.

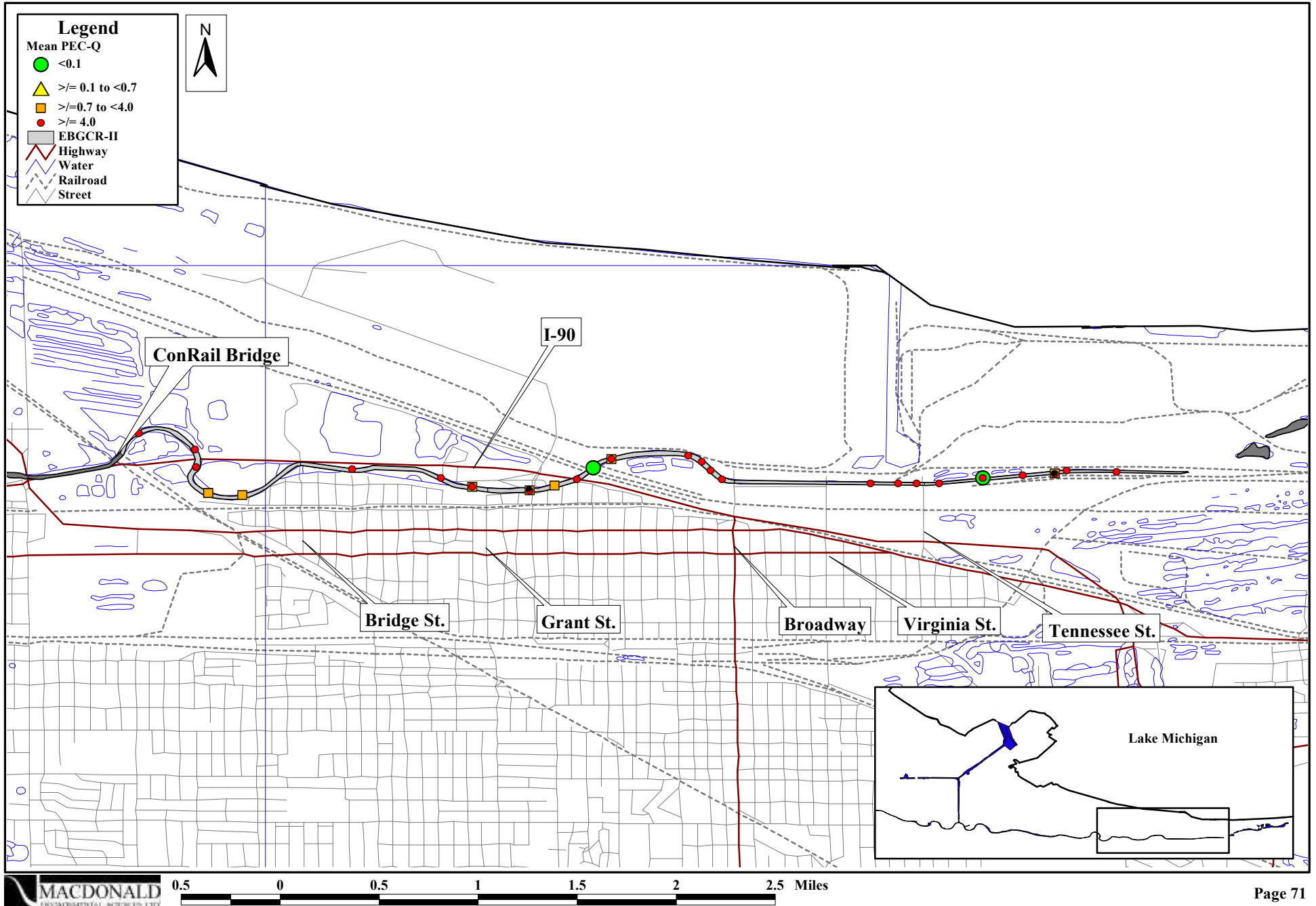


Figure 7.10. Areal extent of sediment toxicity in the EBGCR-II.

