
Figures

Chapter 6 - East Branch of the Grand Calumet River - I

Figure 6.1. Location of sampling stations for surficial sediment chemistry in the EBGCR-I.

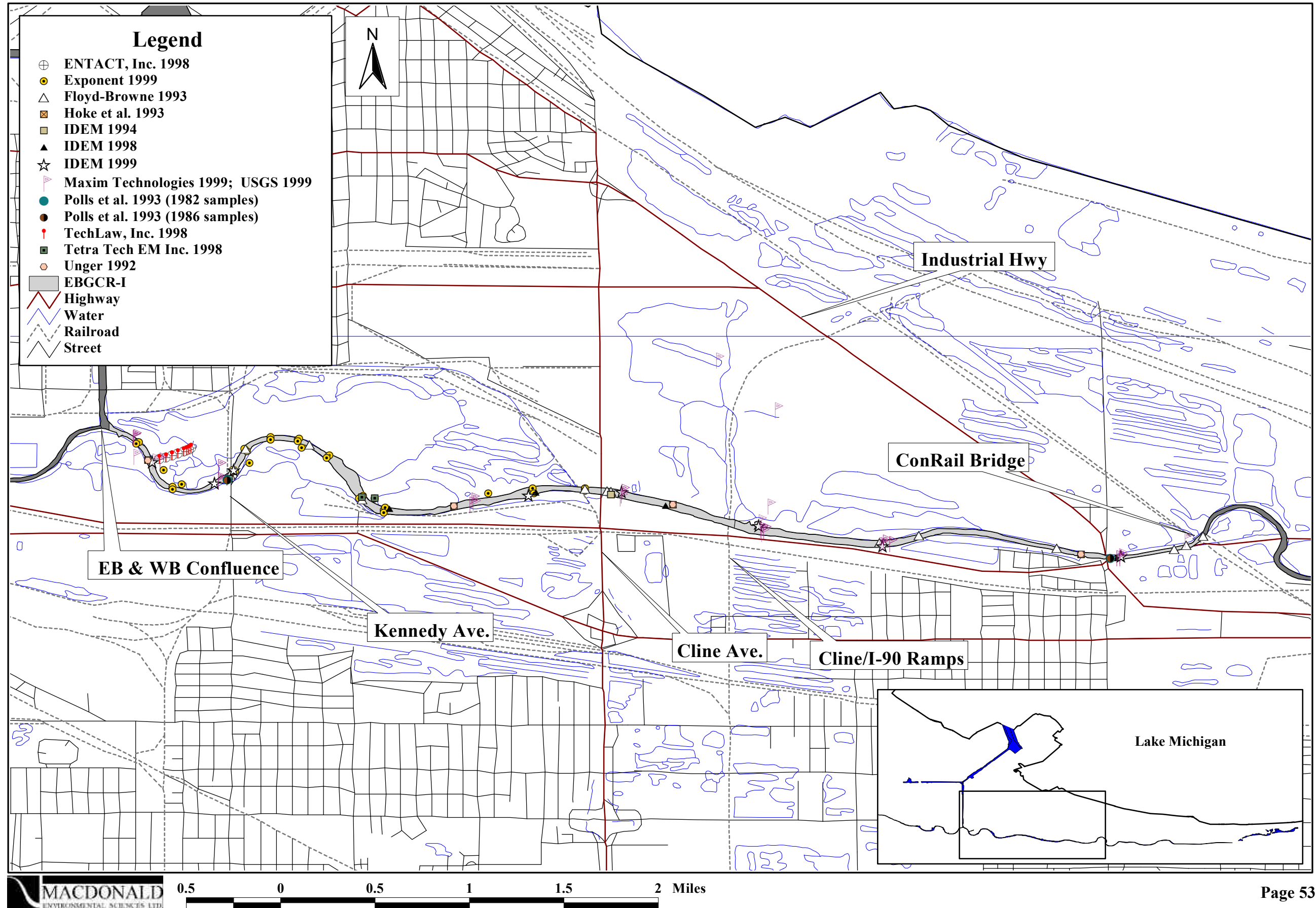


Figure 6.2. Location of sampling stations for sub-surface sediment chemistry in the EBGCR-I.

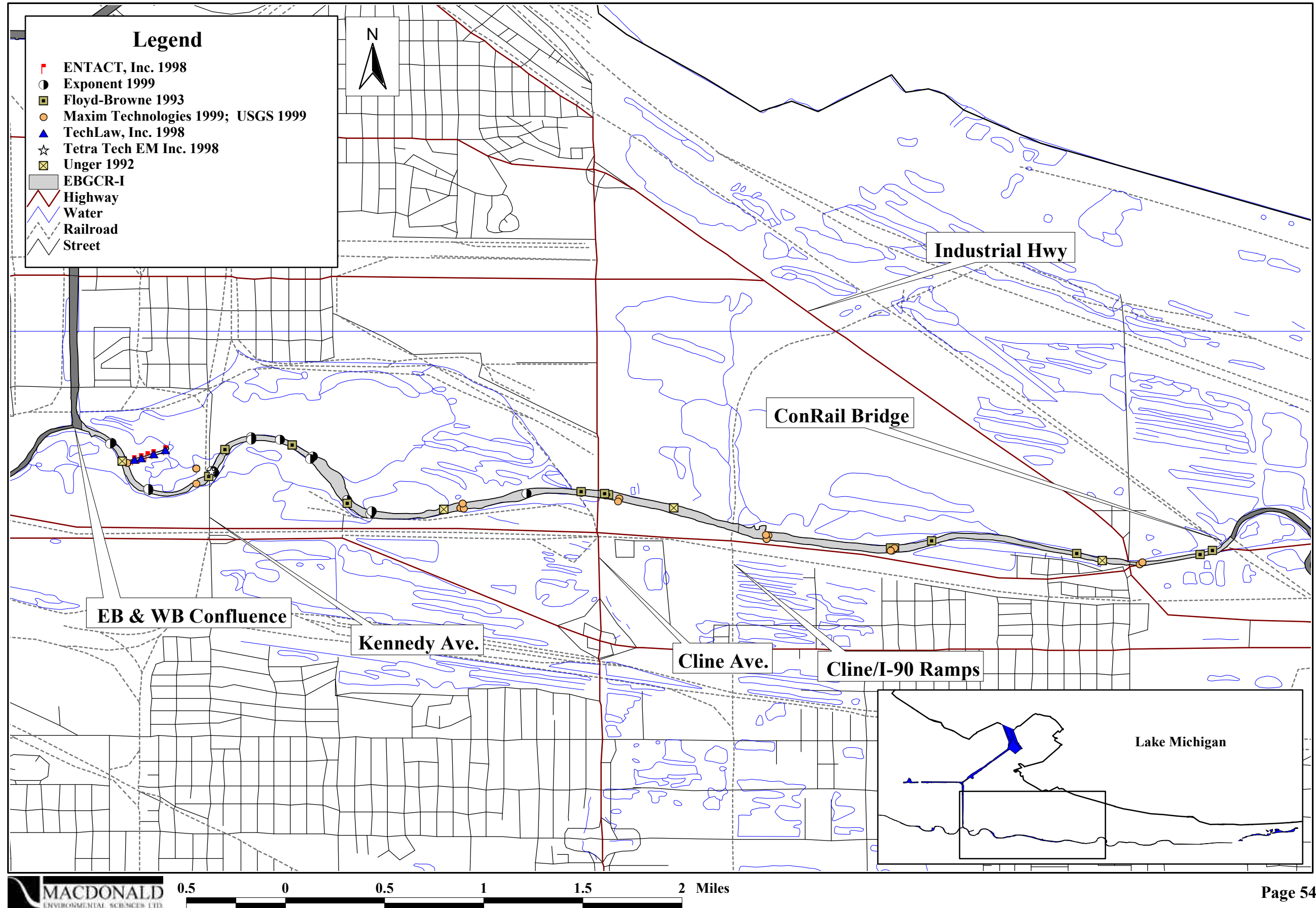


Figure 6.3. Location of sampling stations for sediment toxicity testing in the EBGCR-I.

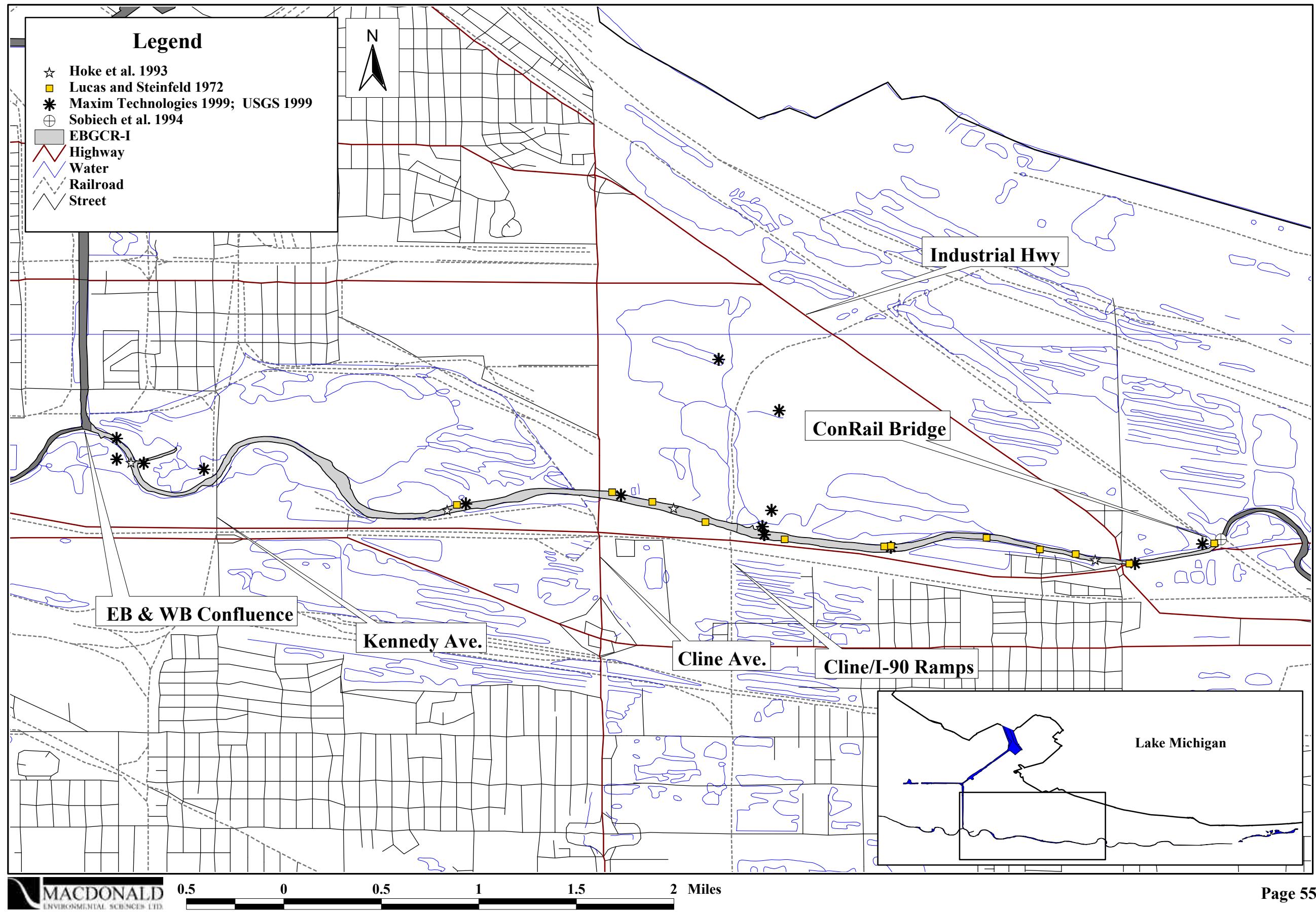


Figure 6.4. Areal extent of altered benthic invertebrate communities in the EBGCR-I.

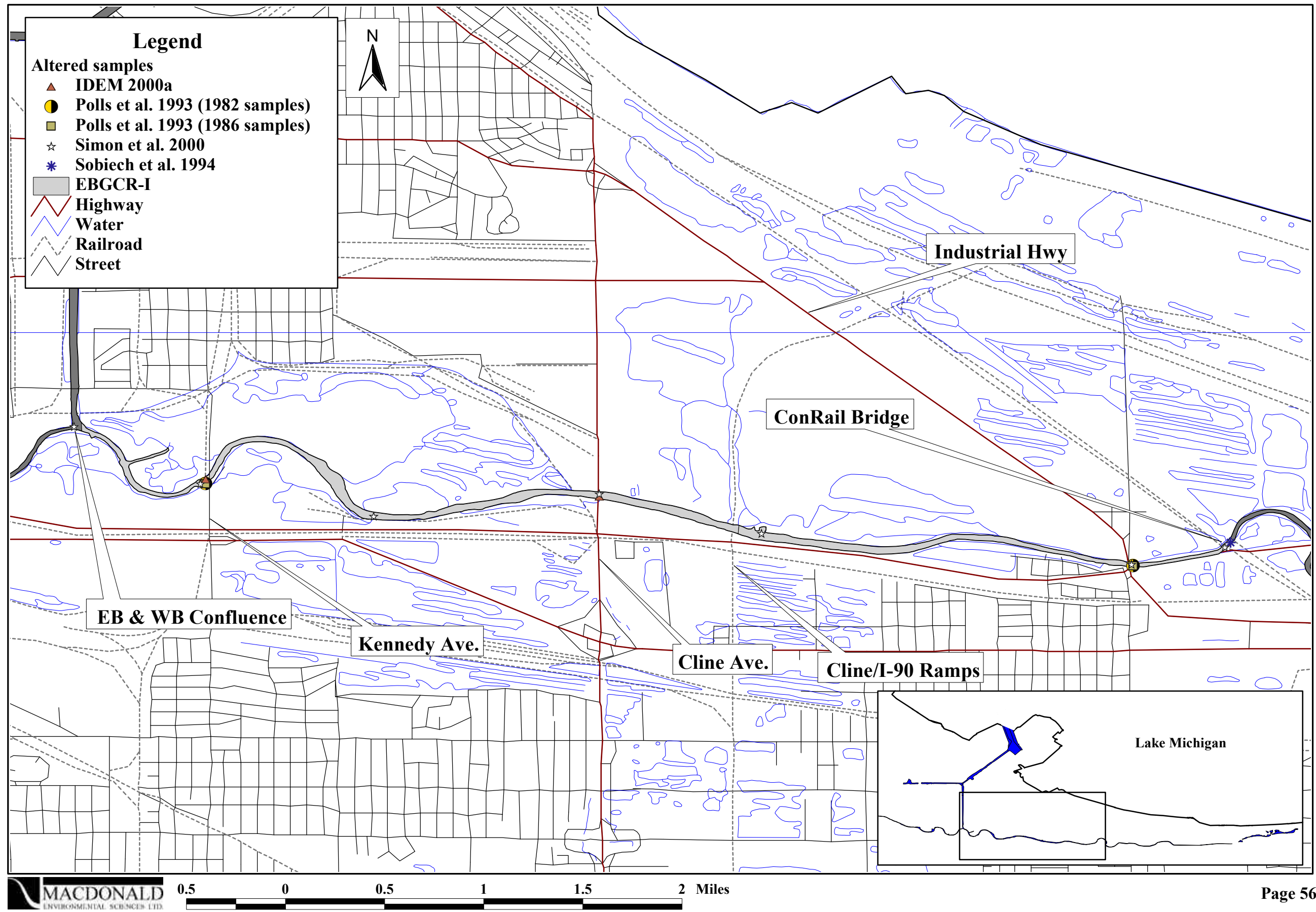


Figure 6.5. Location of sampling stations for tissue chemistry in the EBGCR-I.

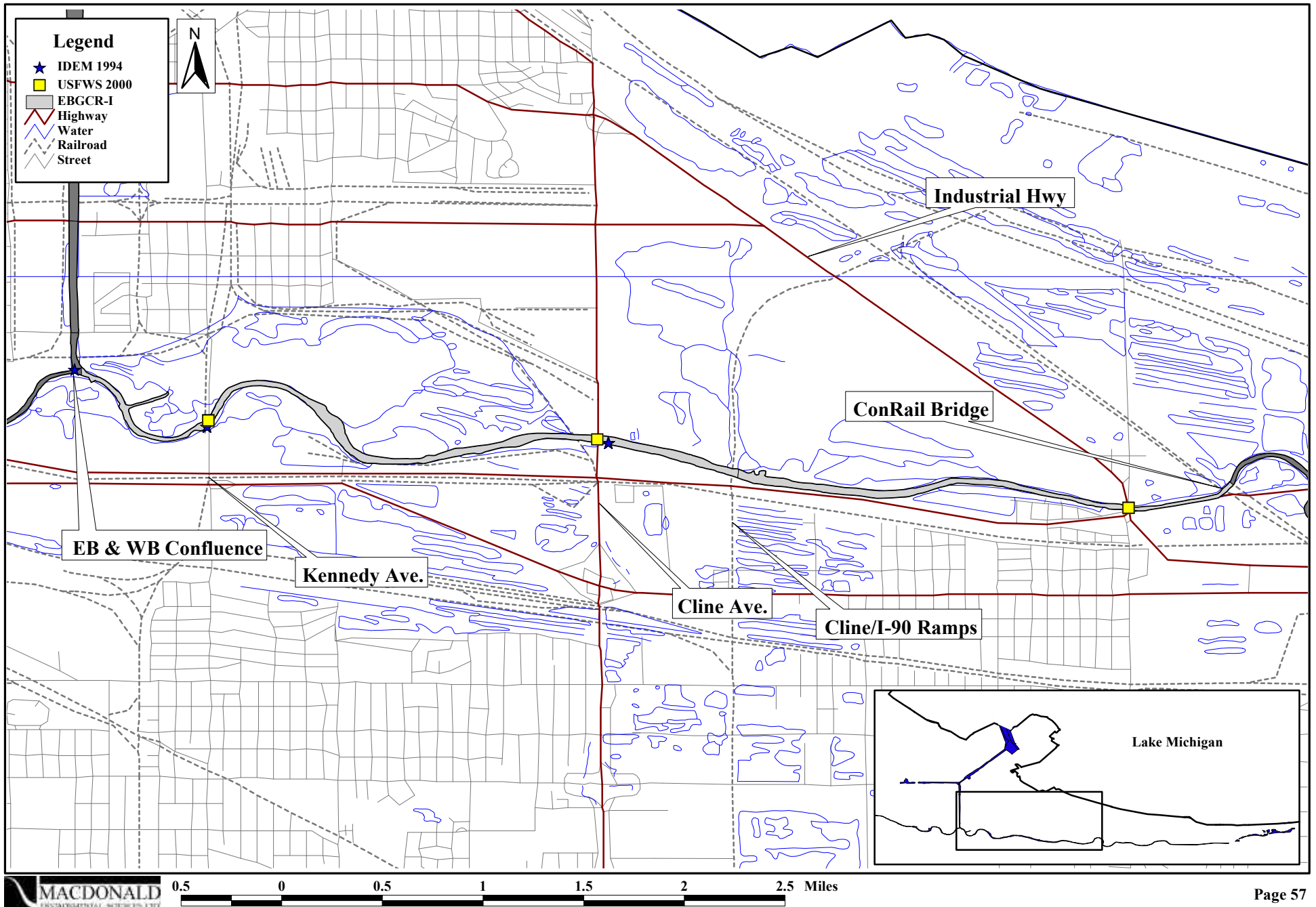


Figure 6.6. Spatial distribution of mean PEC-Qs in surficial sediments within the EBGCR-I.

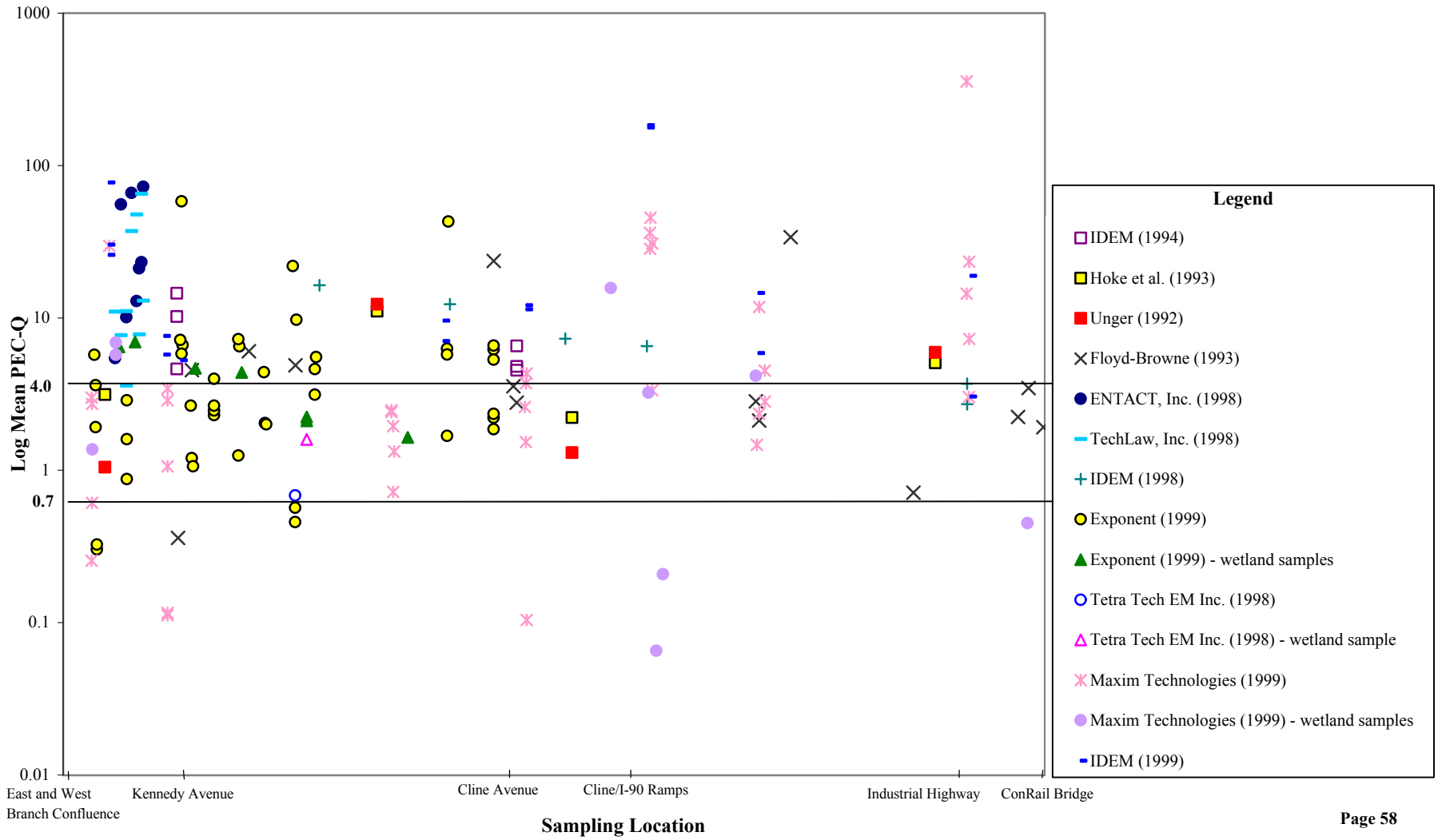


Figure 6.7. Areal extent of injury to surficial sediments in the EBGCR-I.

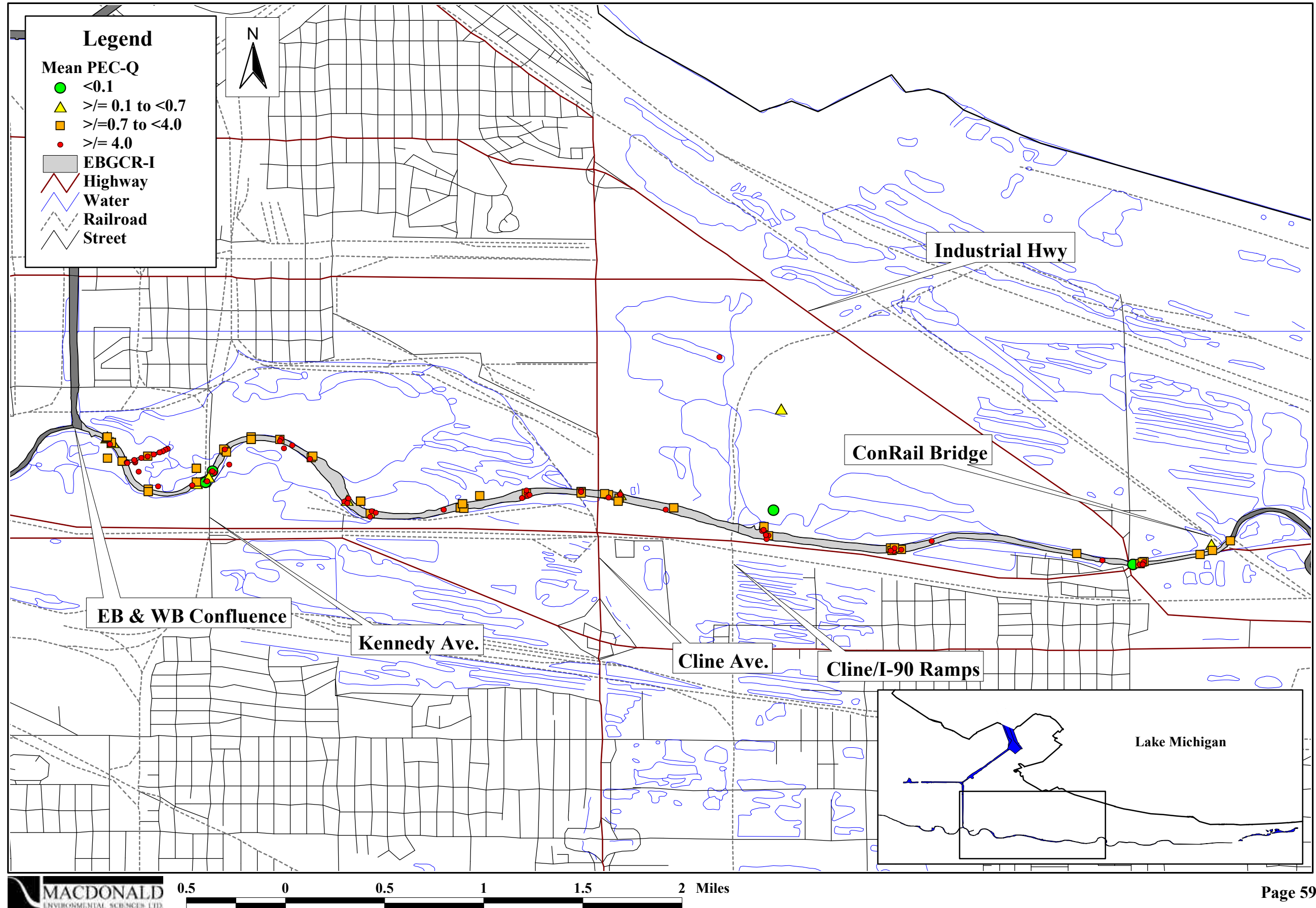


Figure 6.8. Spatial distribution of mean PEC-Qs in sub-surface sediments within the EBGCR-I.

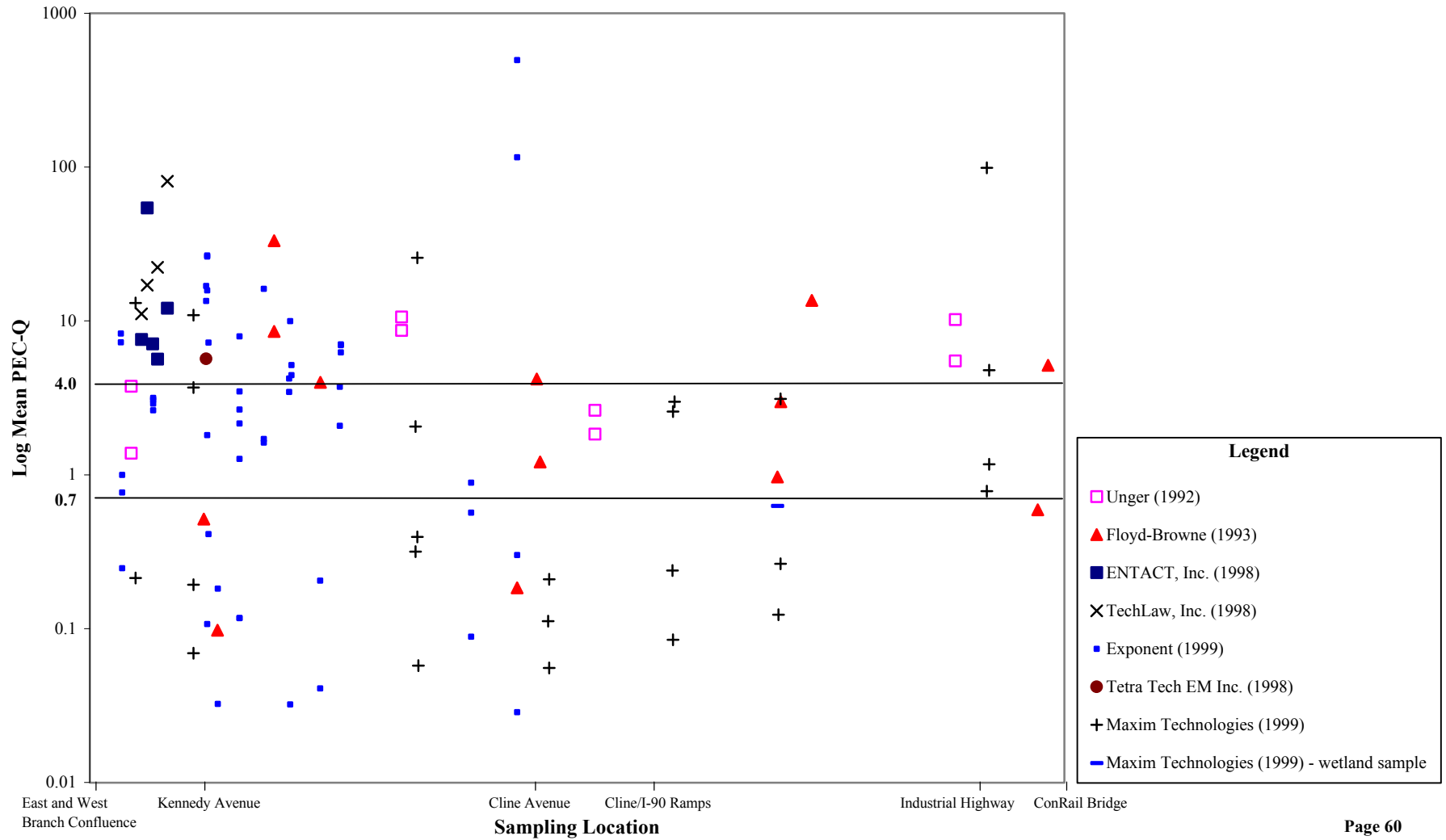


Figure 6.9. Areal extent of injury to sub-surface sediments in the EBGCR-I.

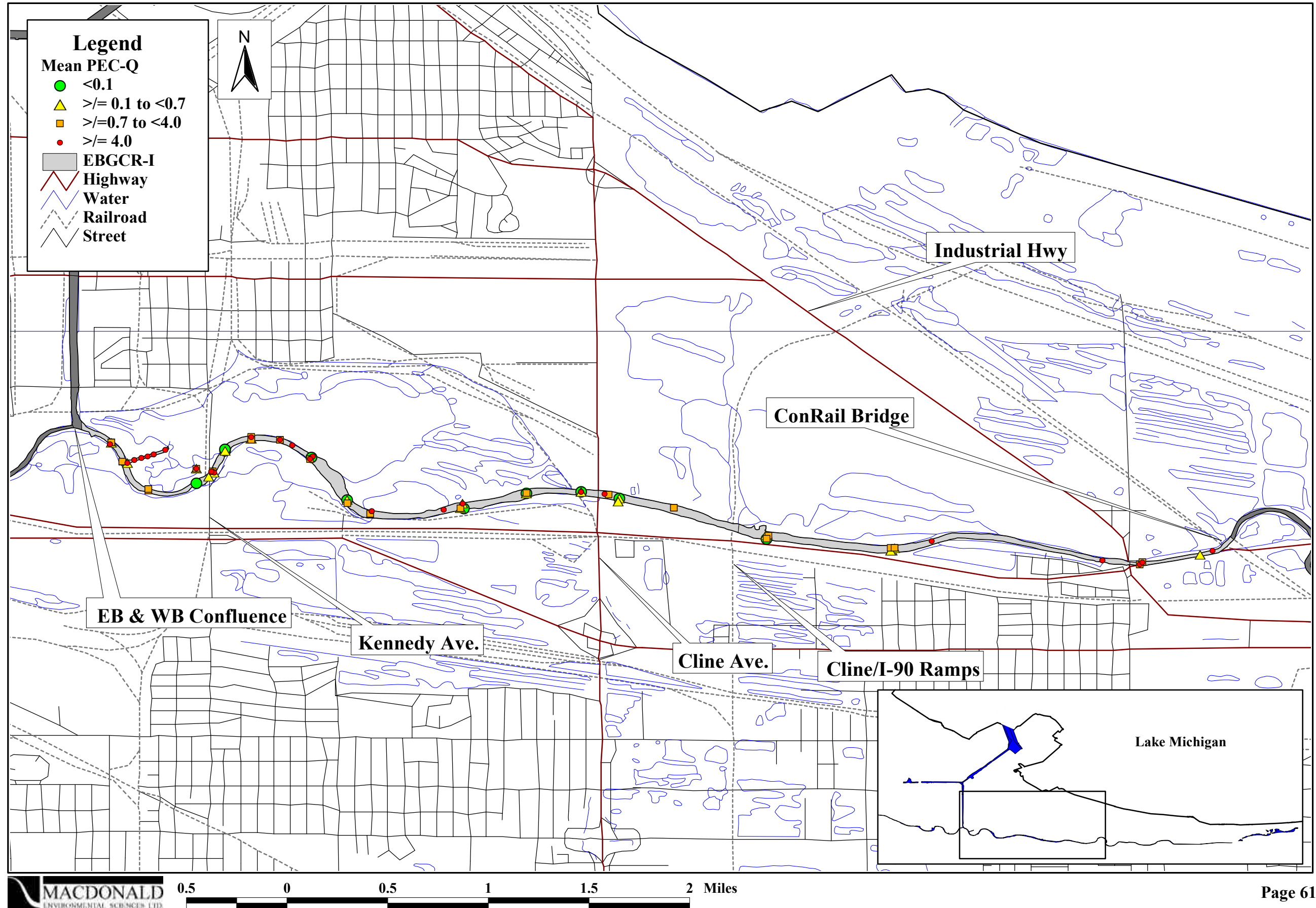


Figure 6.10. Areal extent of sediment toxicity in the EBGCR-I.

