

---

# **Figures**

## **Chapter 5 - Grand Calumet River Lagoons**

---

Figure 5.1. Location of sampling stations for surficial sediment chemistry in the GCRL.

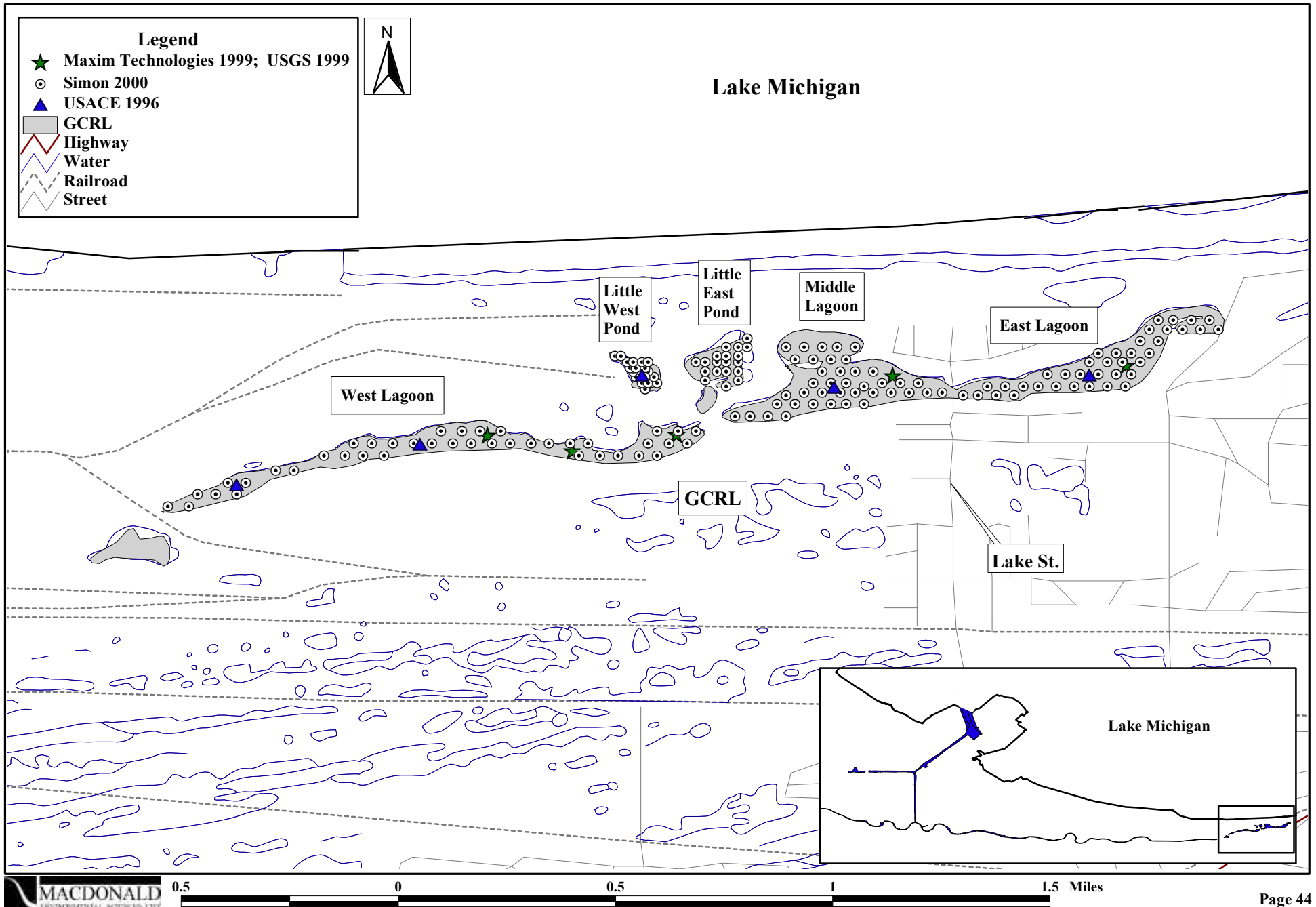


Figure 5.2. Location of sampling stations for sub-surface sediment chemistry in the GCRL.

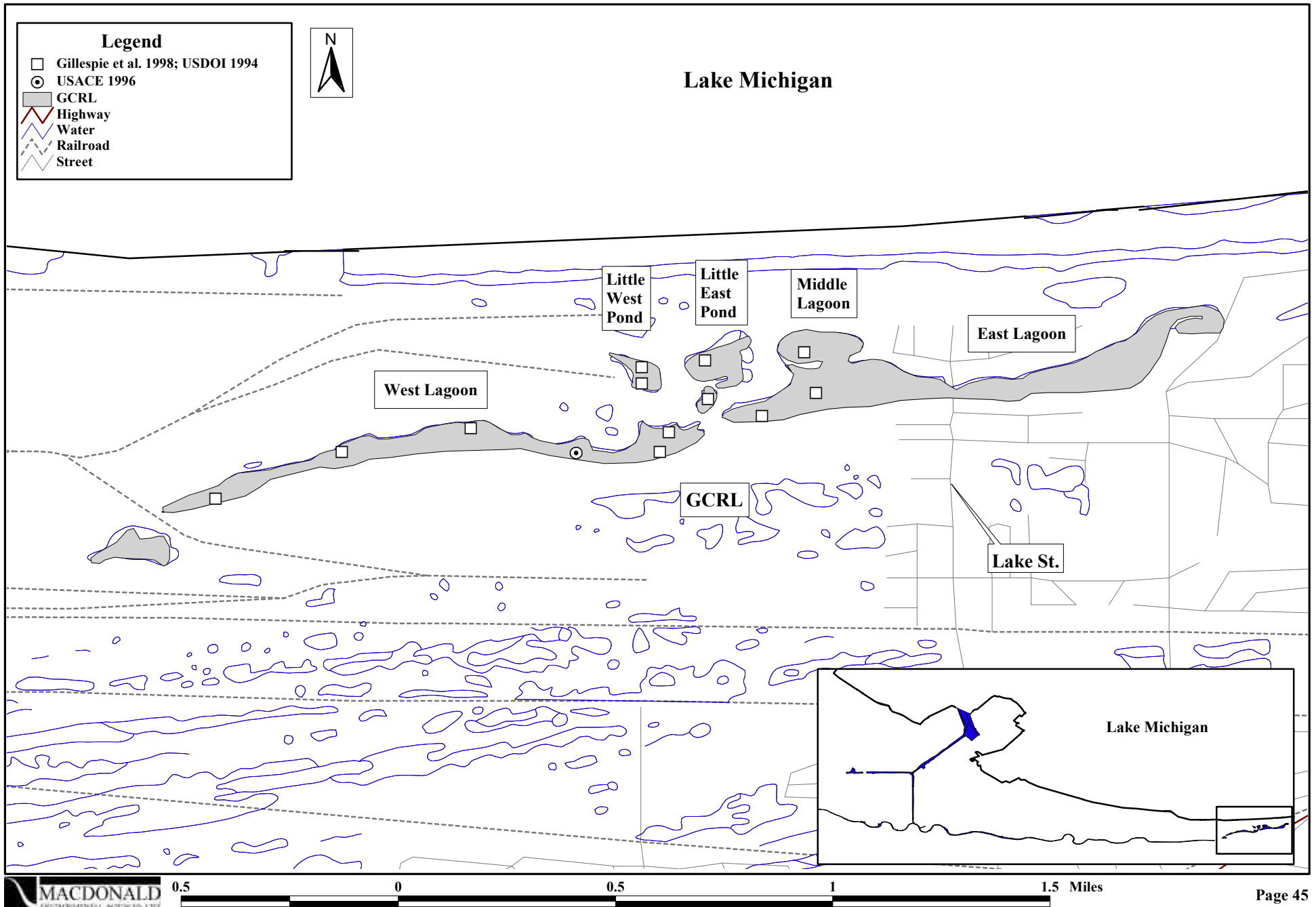


Figure 5.3. Location of sampling stations for sediment toxicity testing in the GCRL.

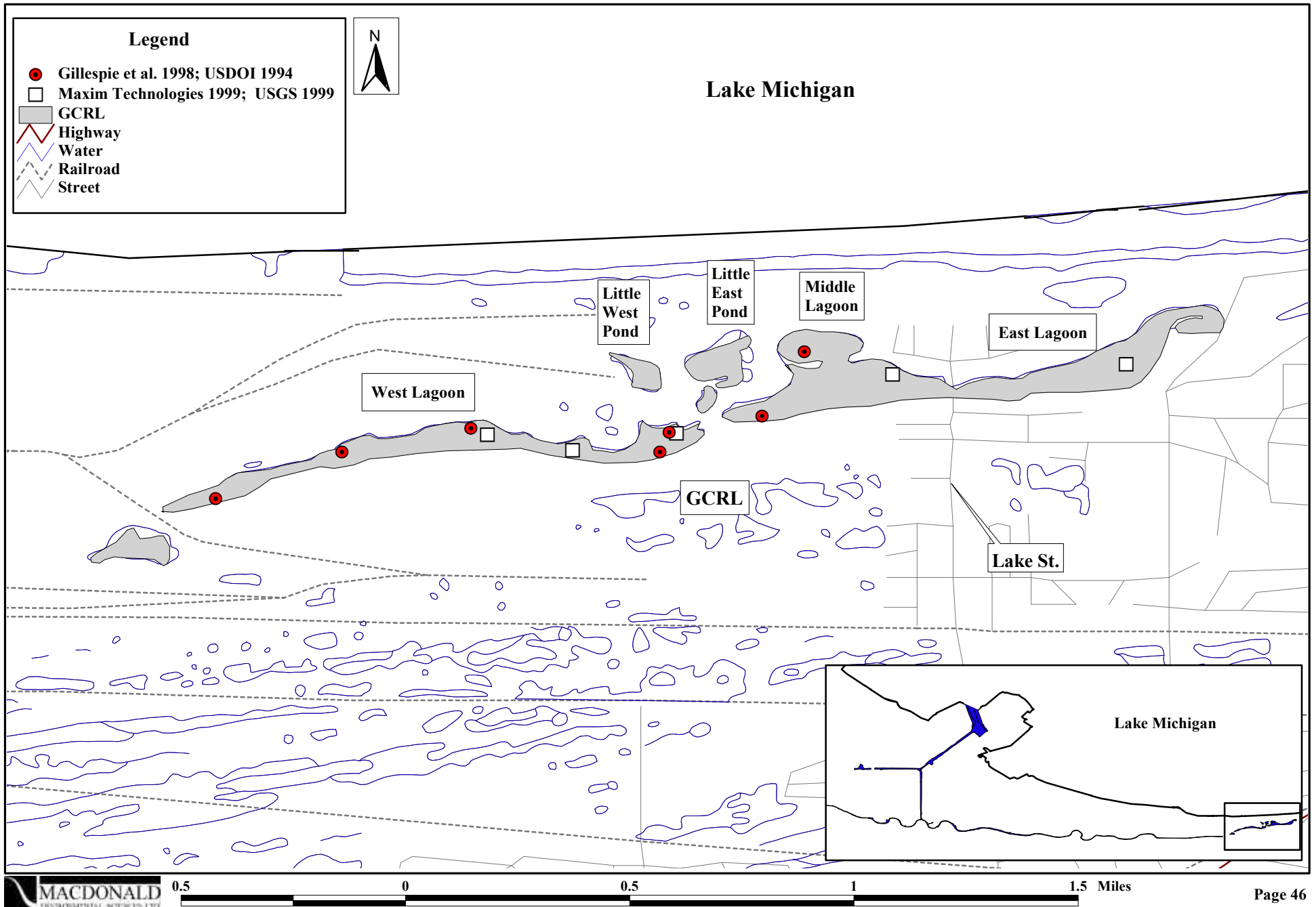
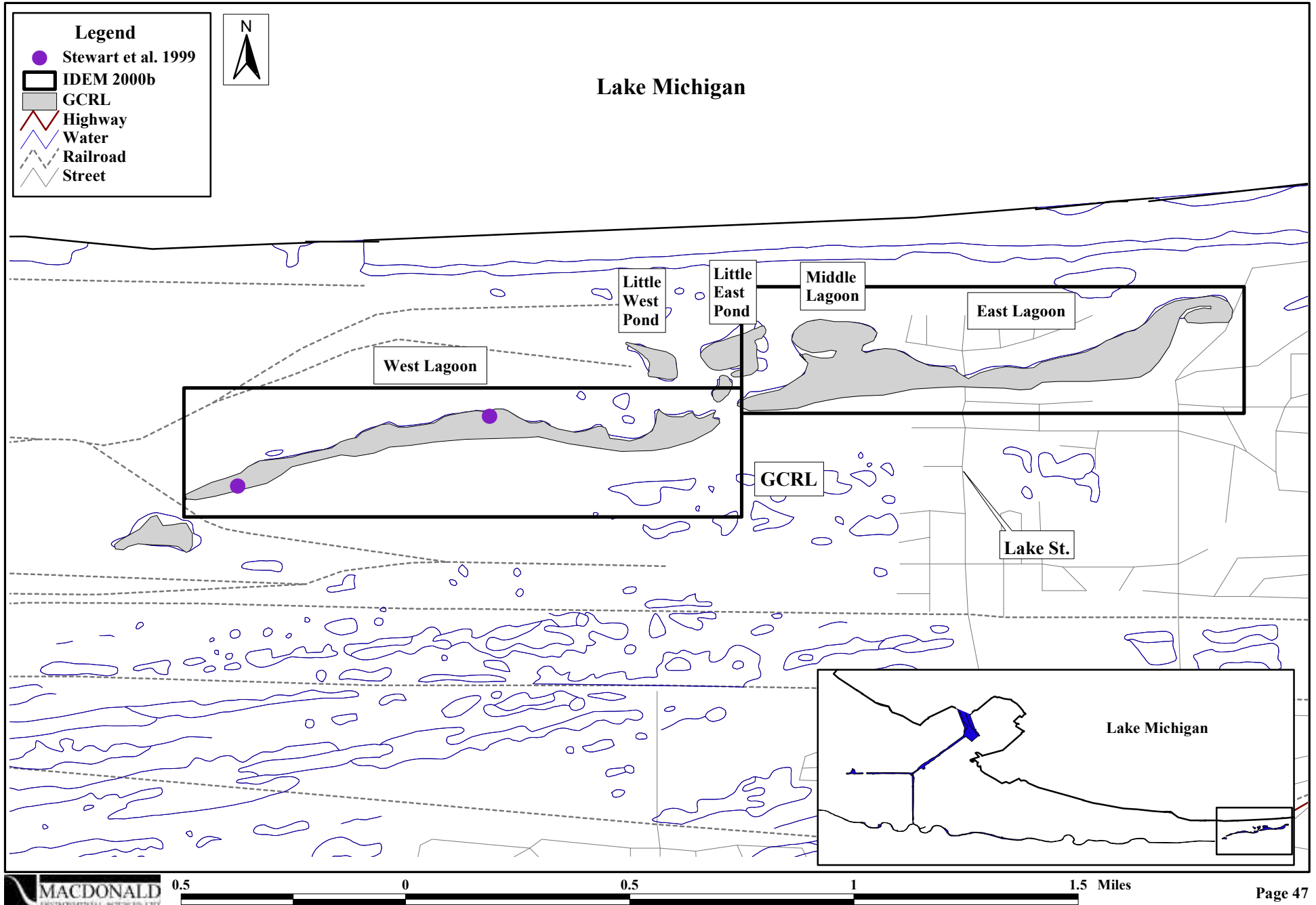


Figure 5.4. Location of sampling stations for tissue chemistry in the GCRL.



**Figure 5.5. Spatial distribution of mean PEC-Qs in surficial sediments within the GCRL.**

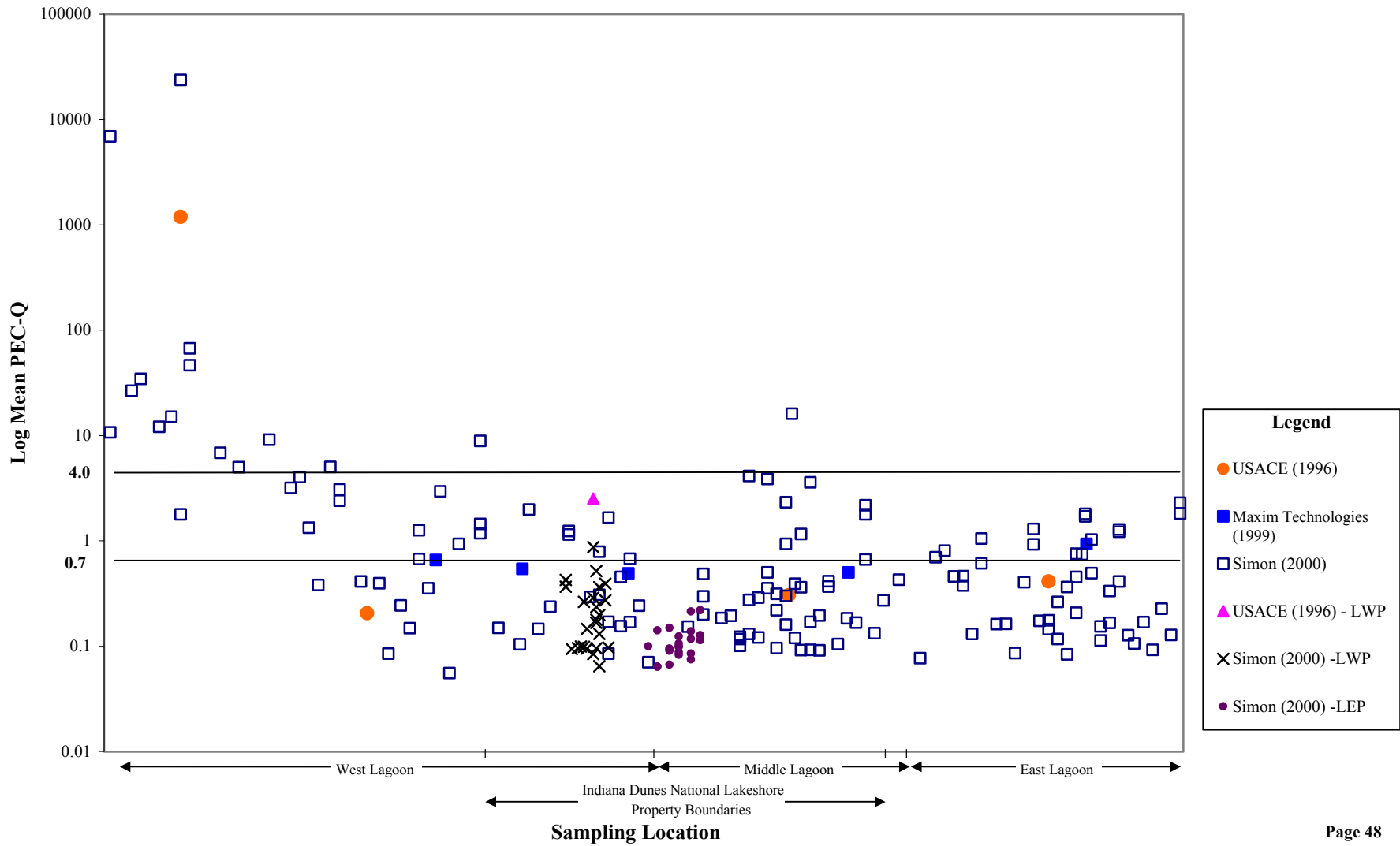
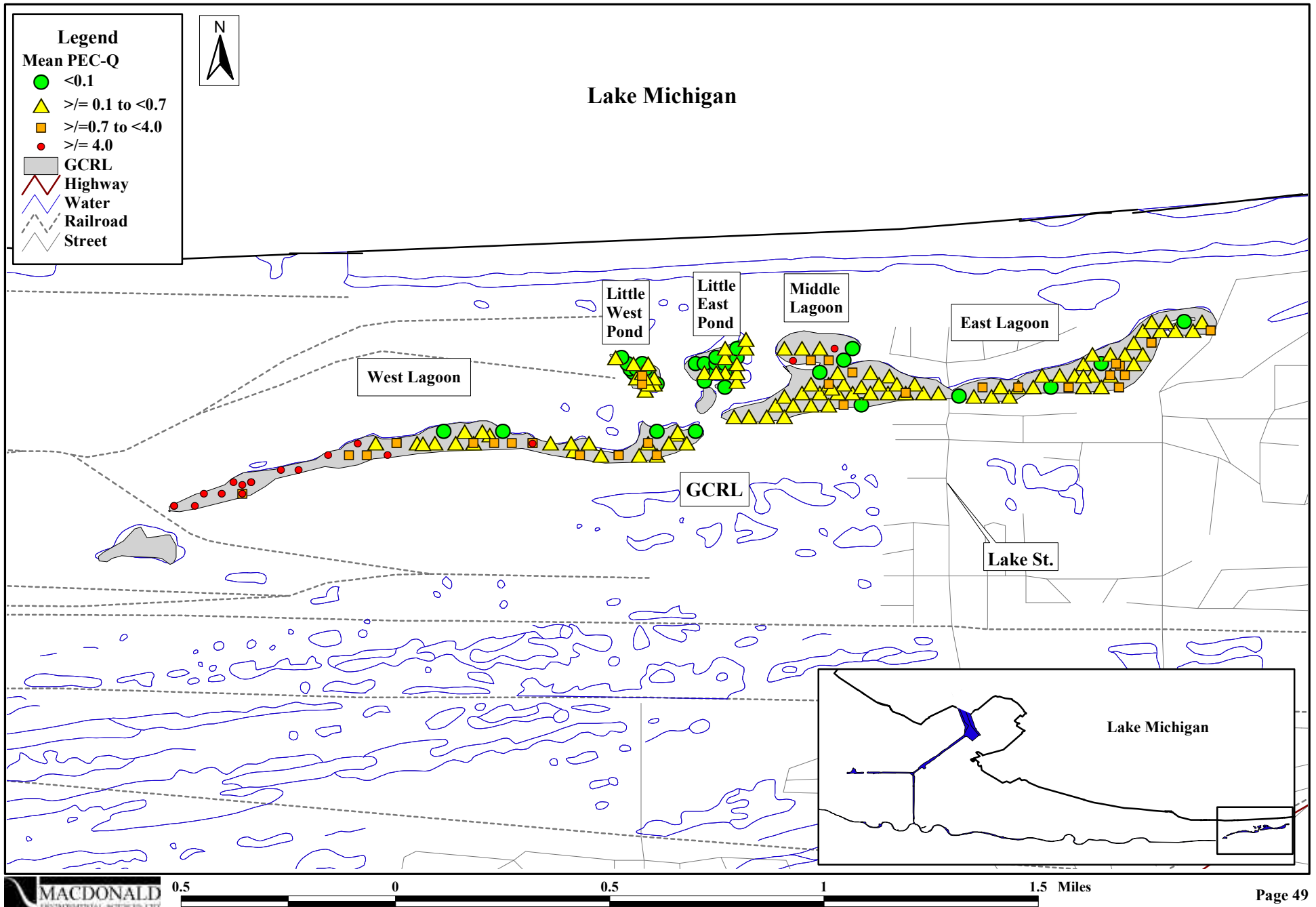


Figure 5.6. Areal extent of injury to surficial sediments in the GCRL.



**Figure 5.7. Spatial distribution of mean PEC-Qs in sub-surface sediments within the GCRL.**

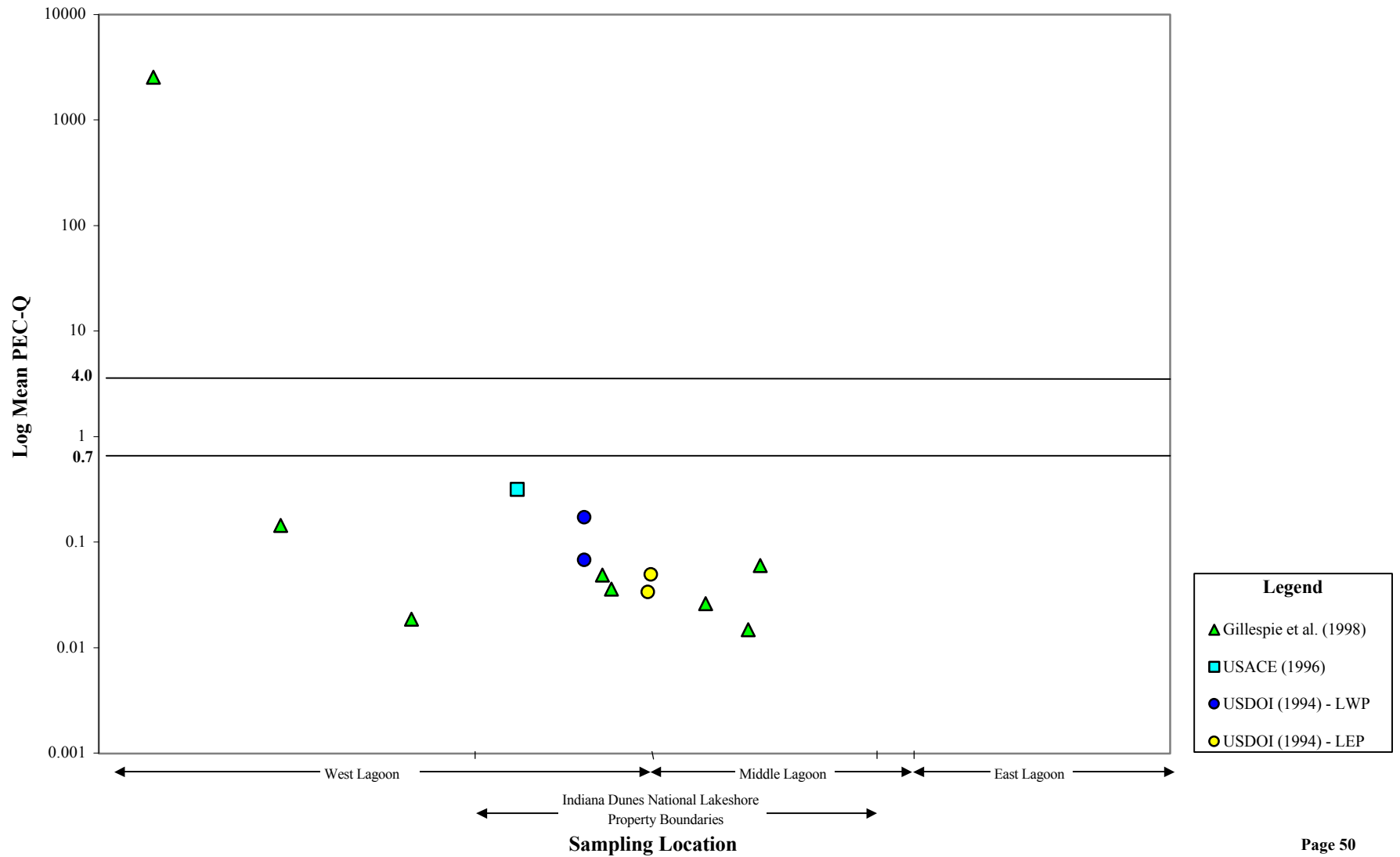




Figure 5.8. Areal extent of injury to sub-surface sediments in the GCRL.

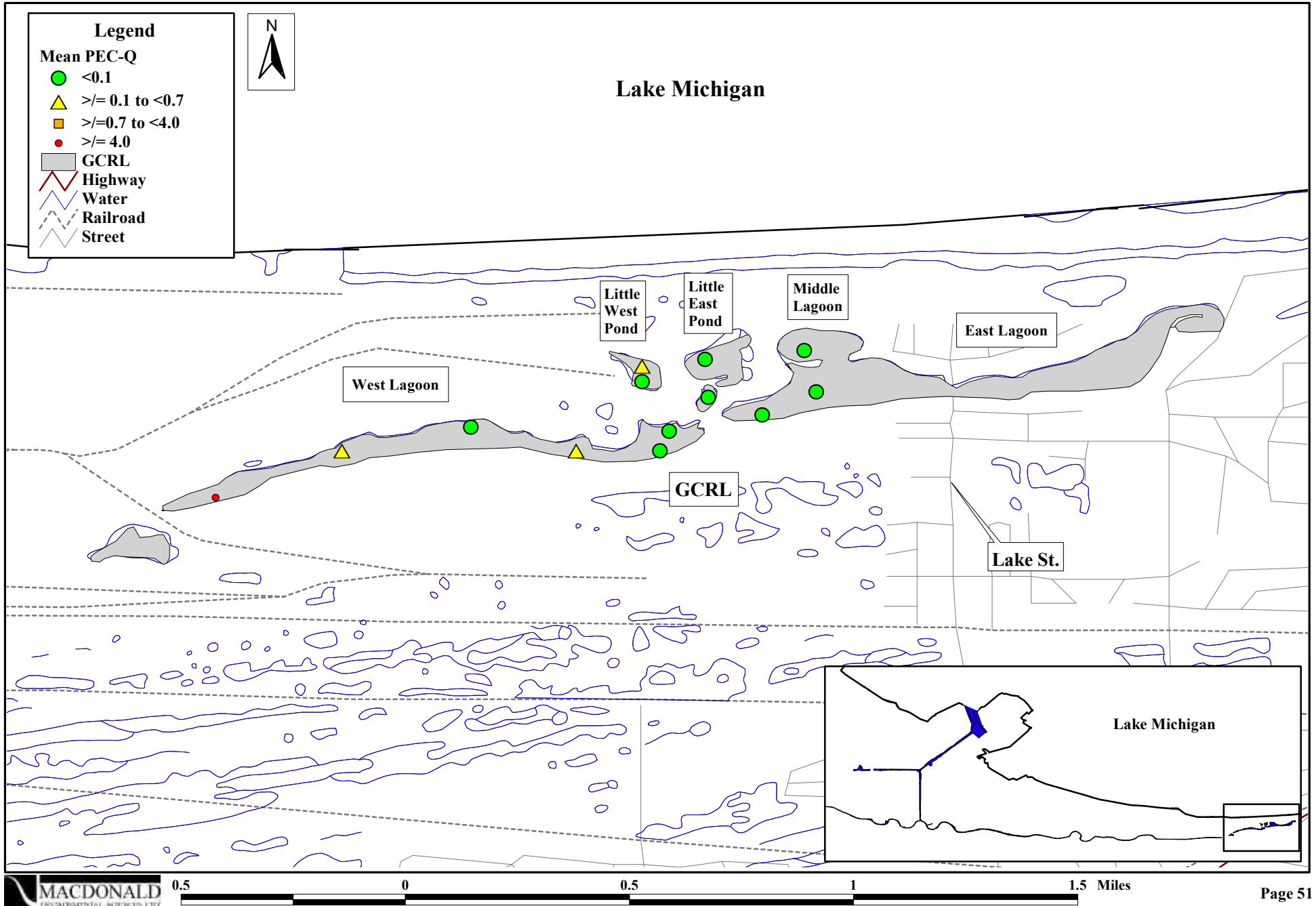


Figure 5.9. Areal extent of sediment toxicity in the GCRL.

