

Figure 4.21. Location of sediment sampling stations for USEPA (1991, 1992c).

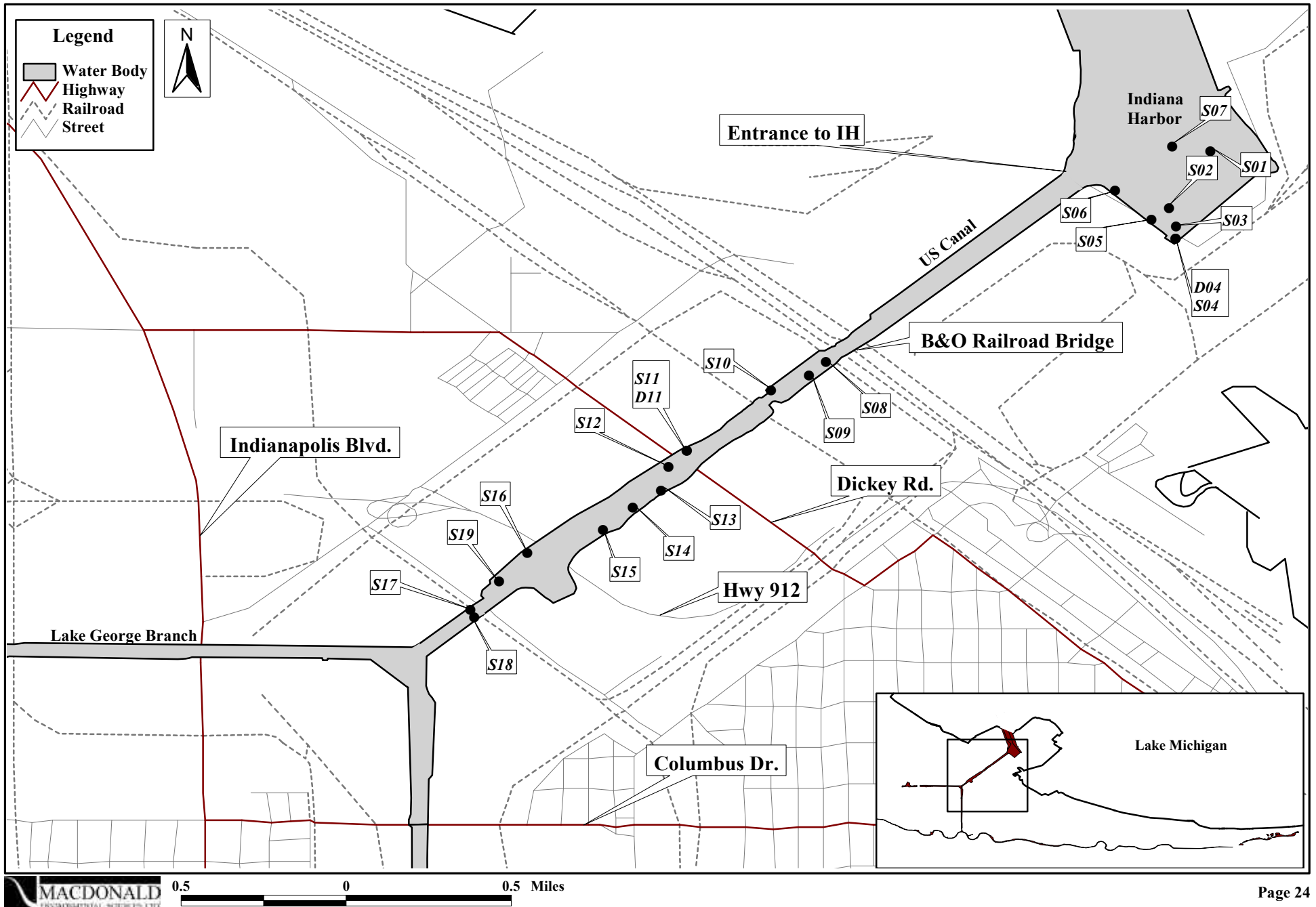


Figure 4.22. Location of benthic macroinvertebrate sampling stations for Rainbolt (1993).

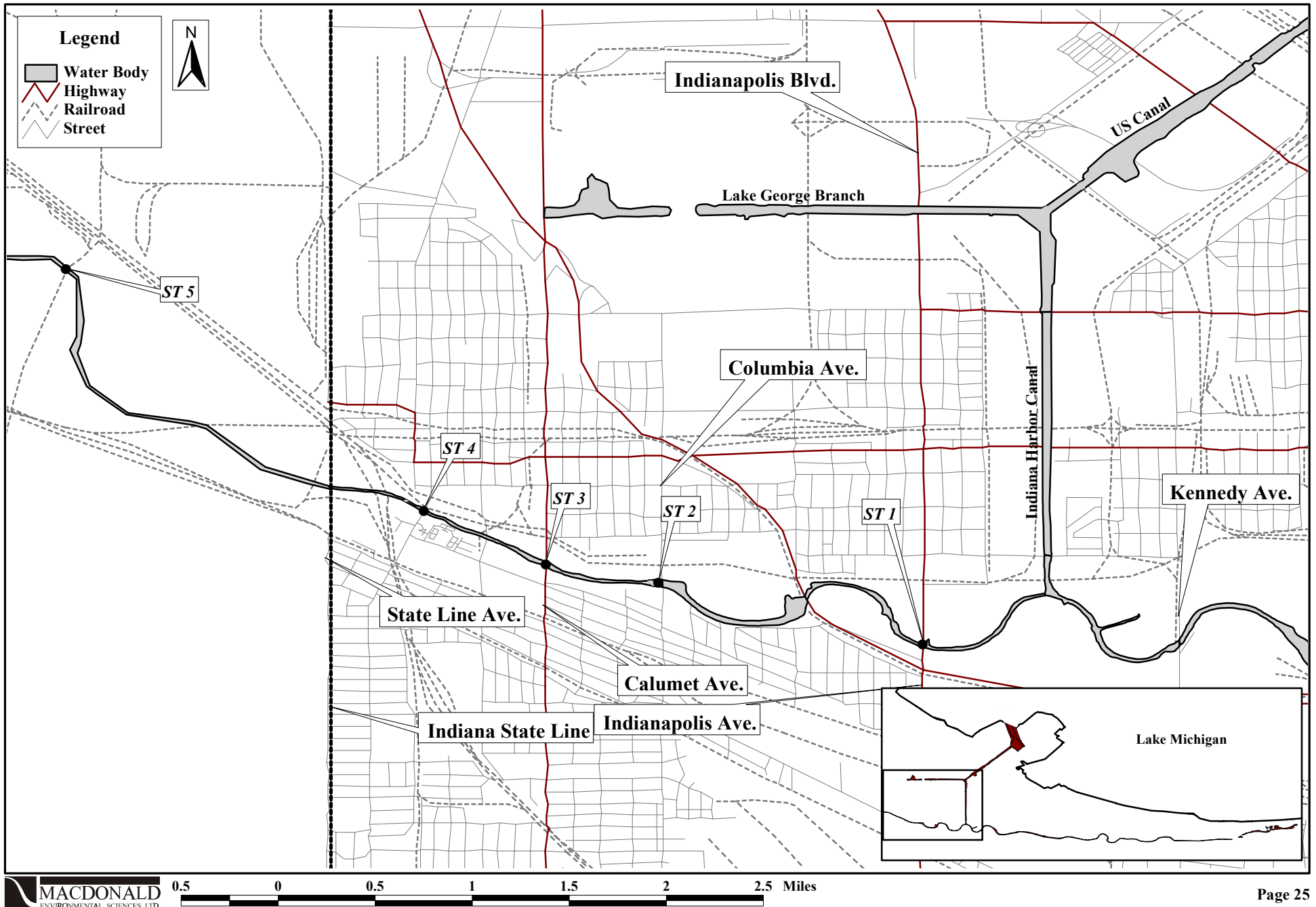


Figure 4.23. Location of sediment sampling stations for USACE (1994).



Figure 4.24. Location of sediment sampling stations for Burton (1994); Dorkin (1994).

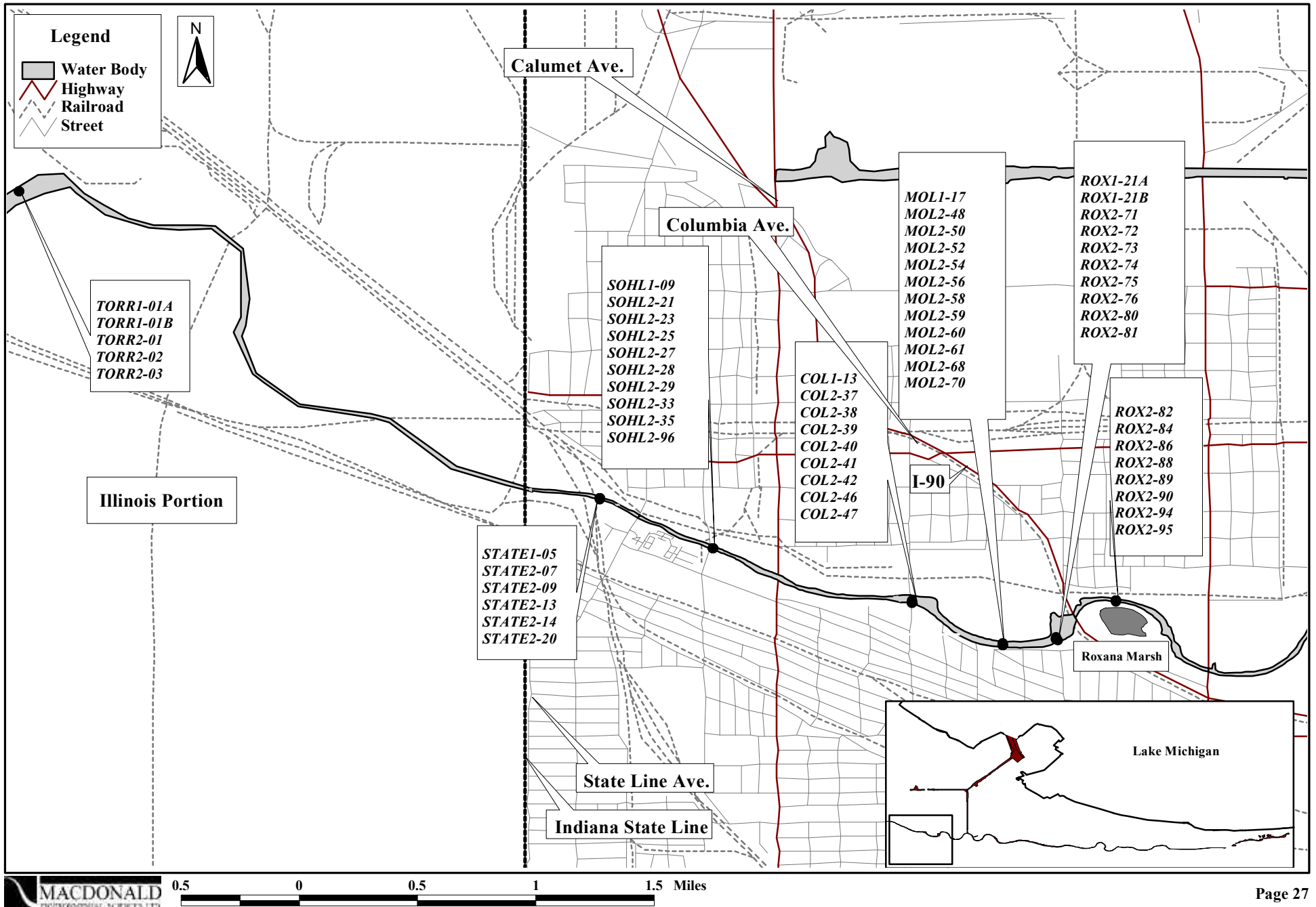


Figure 4.25. Location of benthic macroinvertebrate sampling stations for IDEM (2000a).

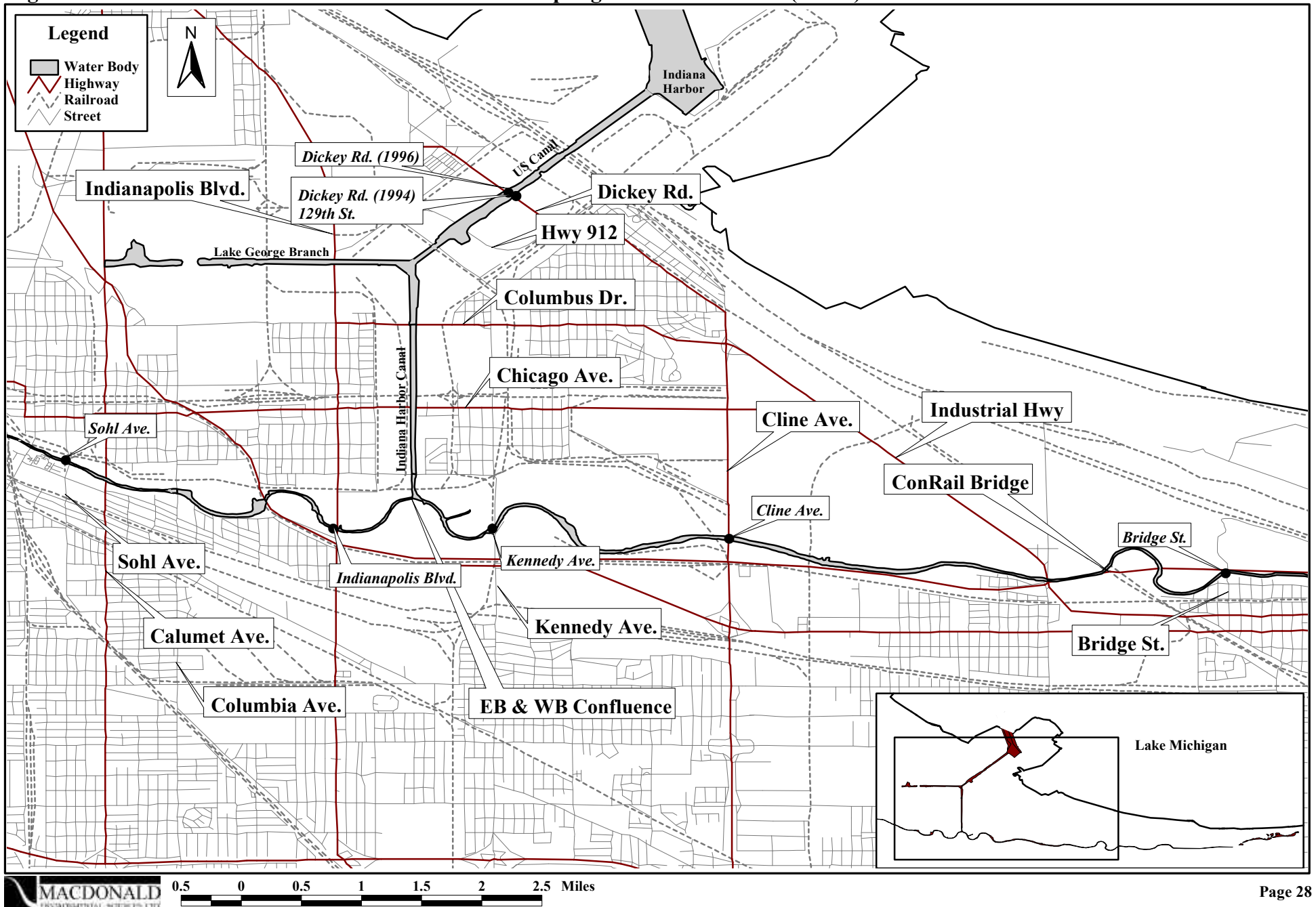


Figure 4.26. Location of sediment and benthic macroinvertebrate sampling stations for Sobiech et al. (1994).

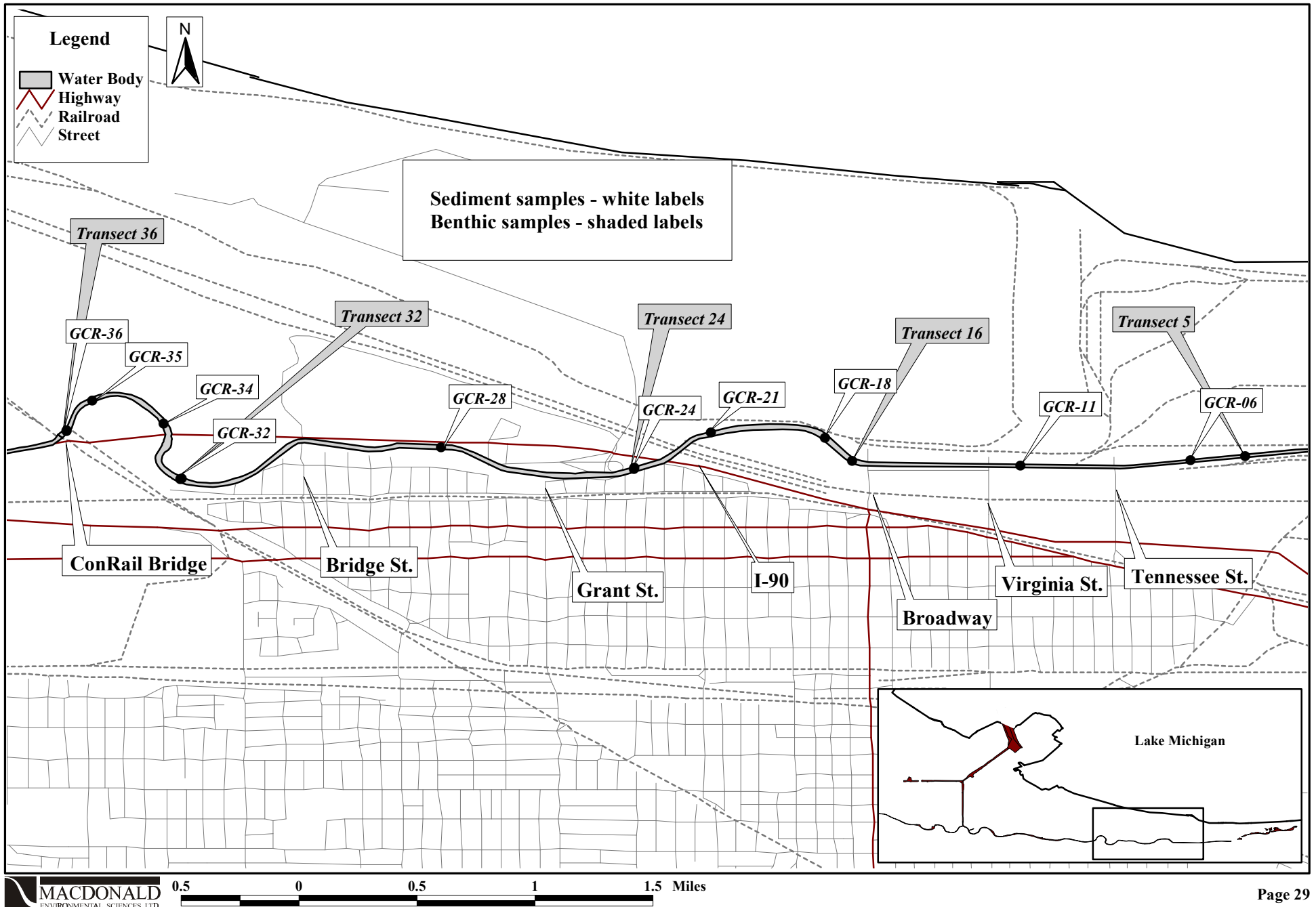


Figure 4.27. Location of benthic macroinvertebrate sampling stations for Stewart et al. (1999).

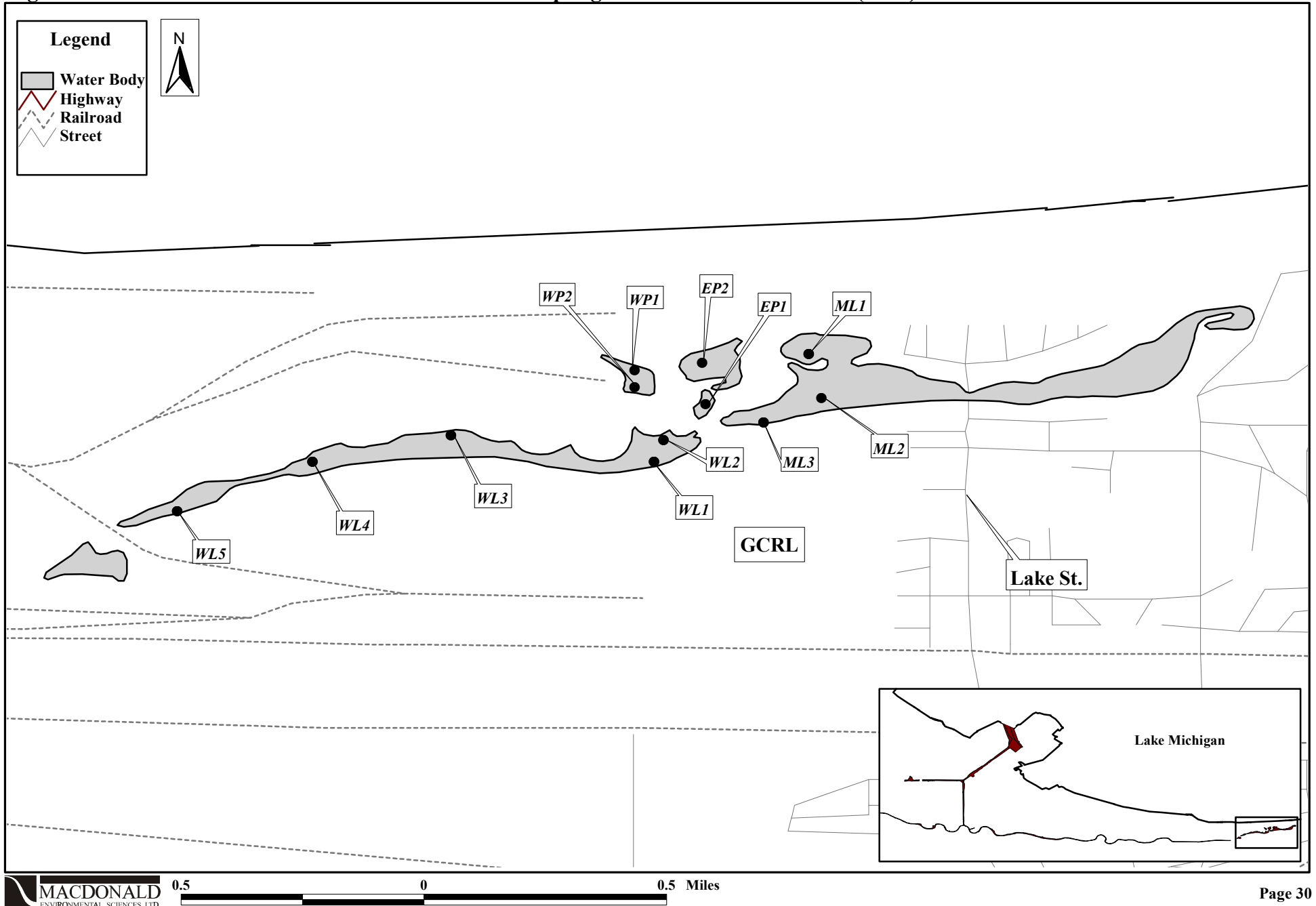


Figure 4.28. Location of sediment sampling stations for Gillespie et al. (1998); USDO (1994).

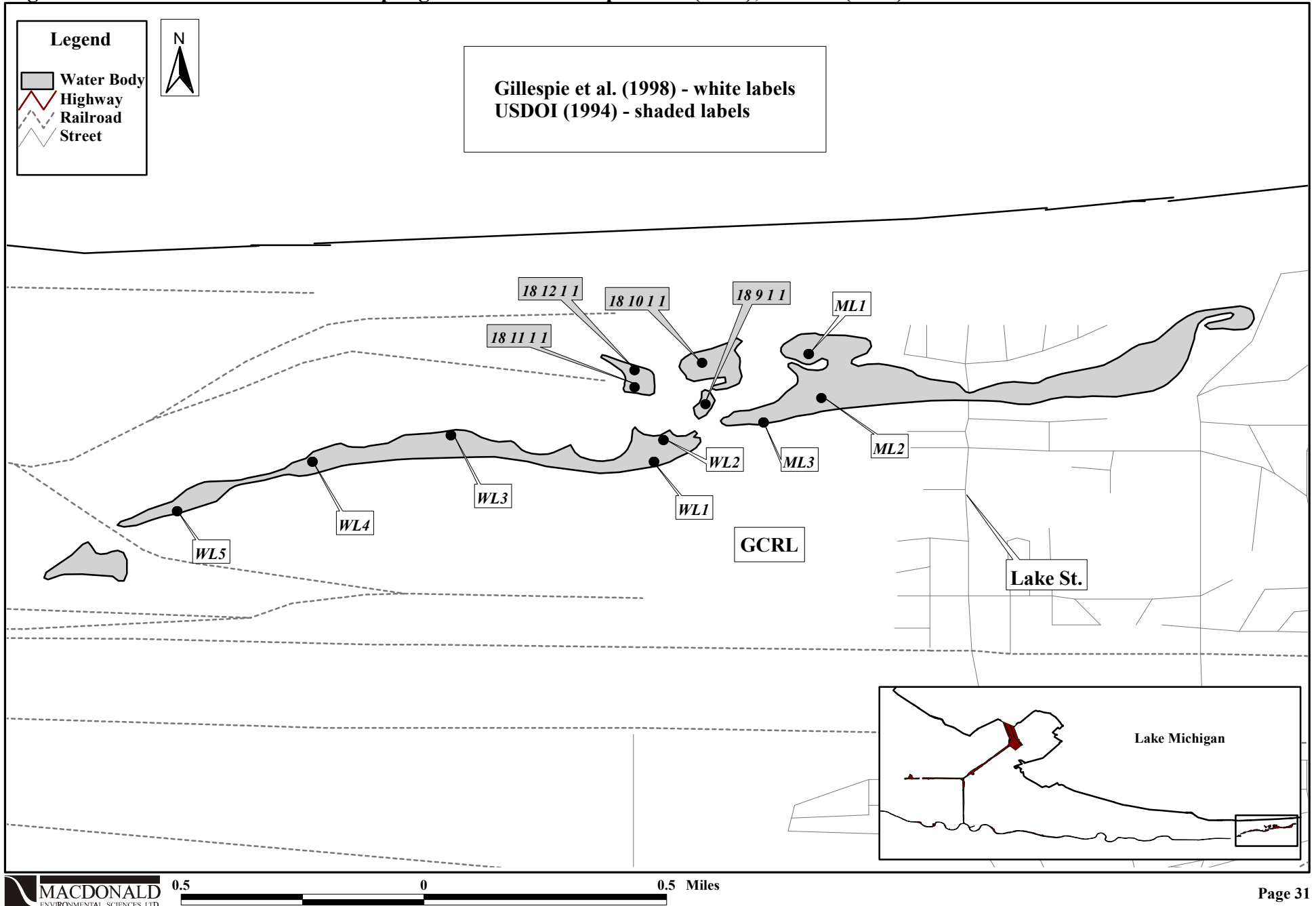




Figure 4.29. Location of sediment sampling stations for USACE (1996).

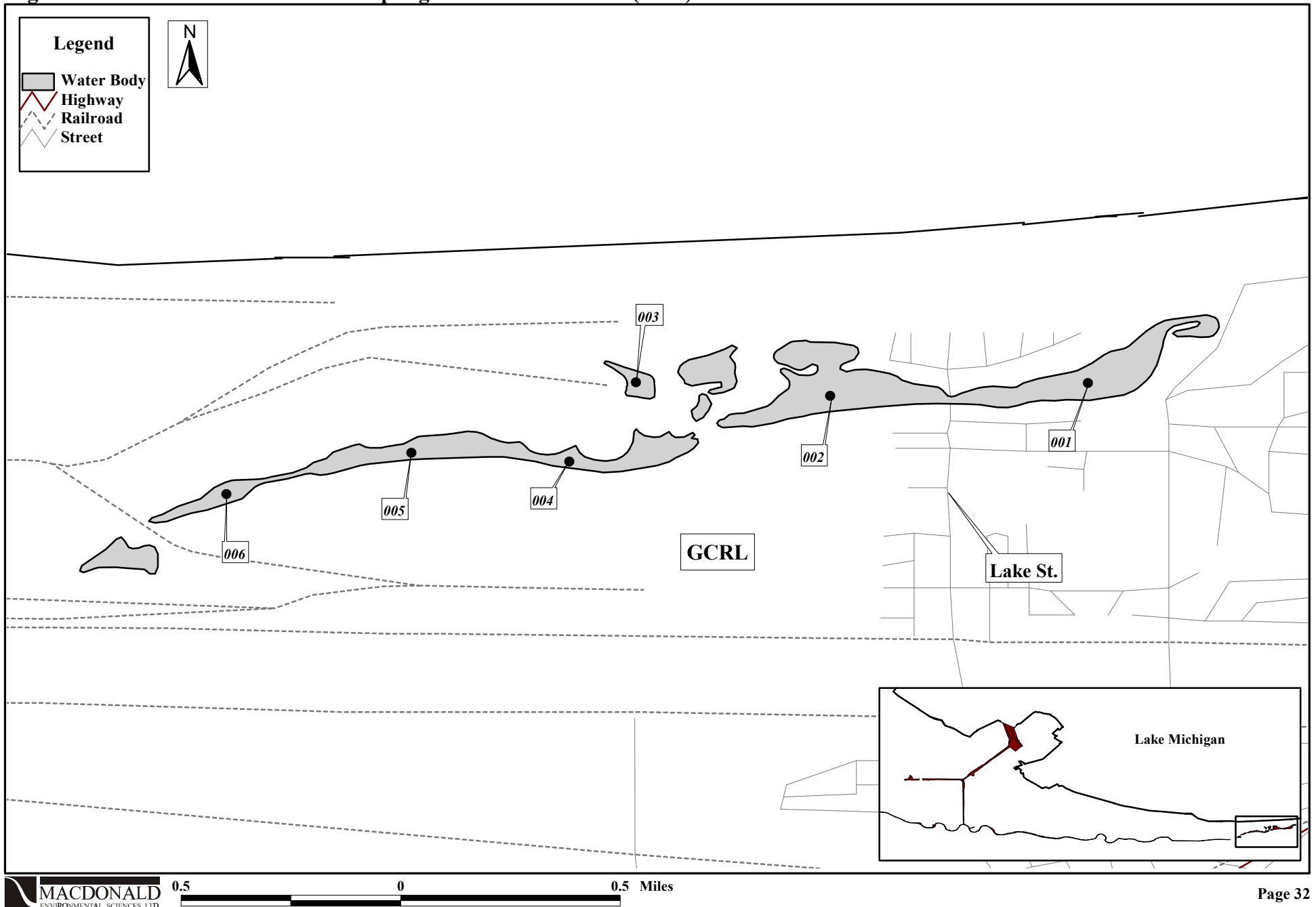


Figure 4.30. Location of sediment sampling stations for RETEC (1997).

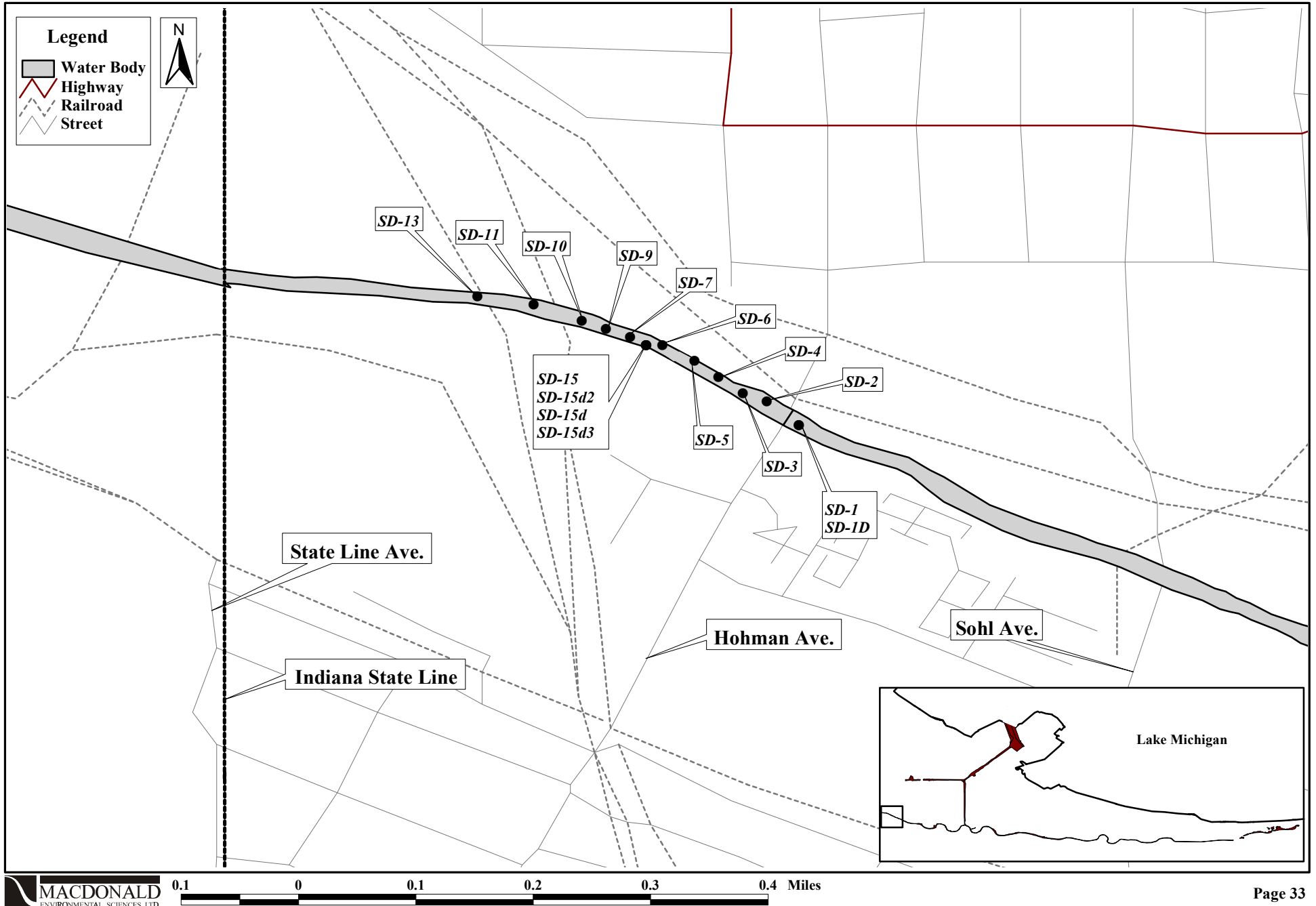


Figure 4.31. Location of sediment sampling stations for ENTACT, Inc. (1998) and TechLaw, Inc. (1998).

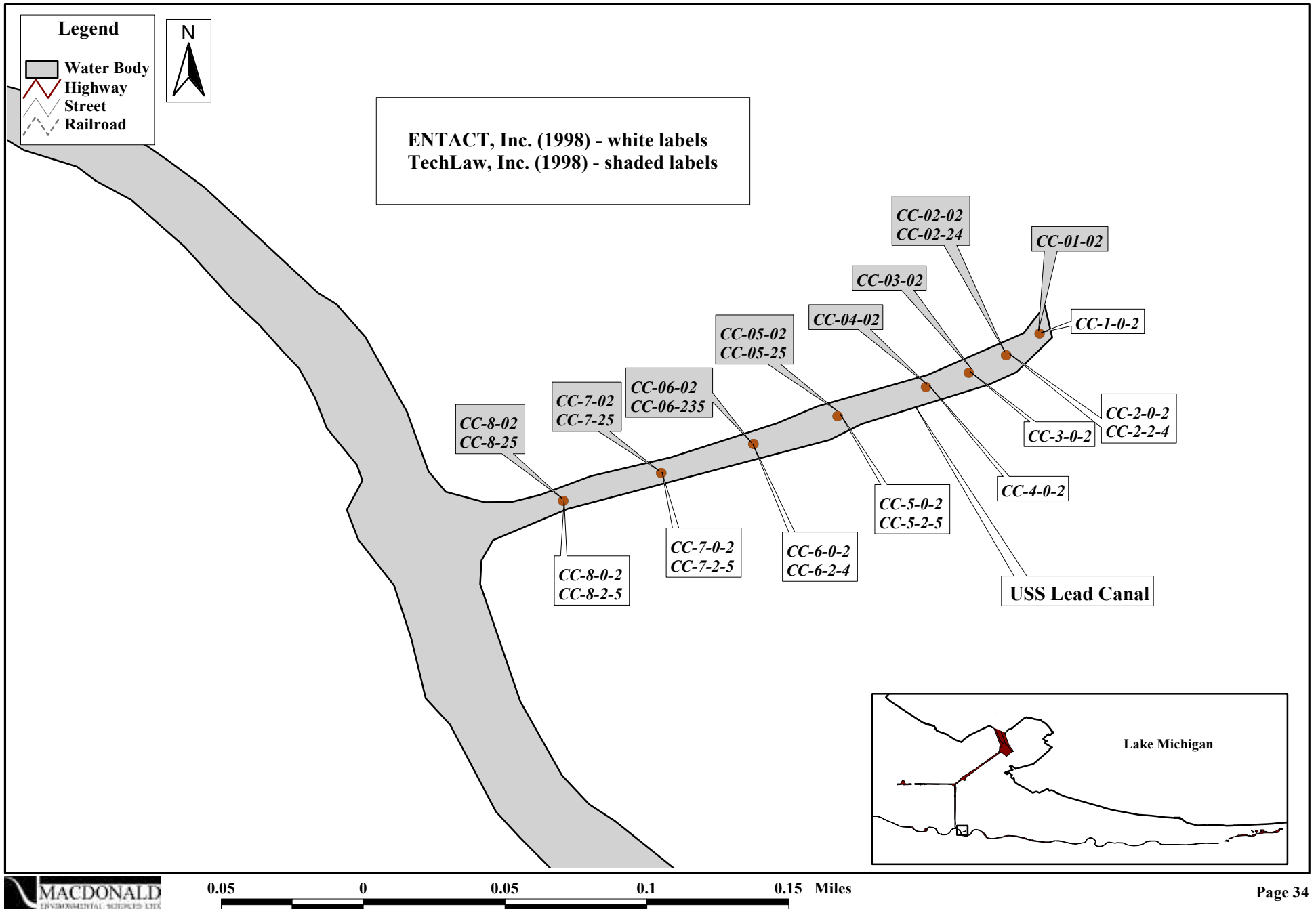


Figure 4.32a. Location of sediment sampling stations for Simon (2000).

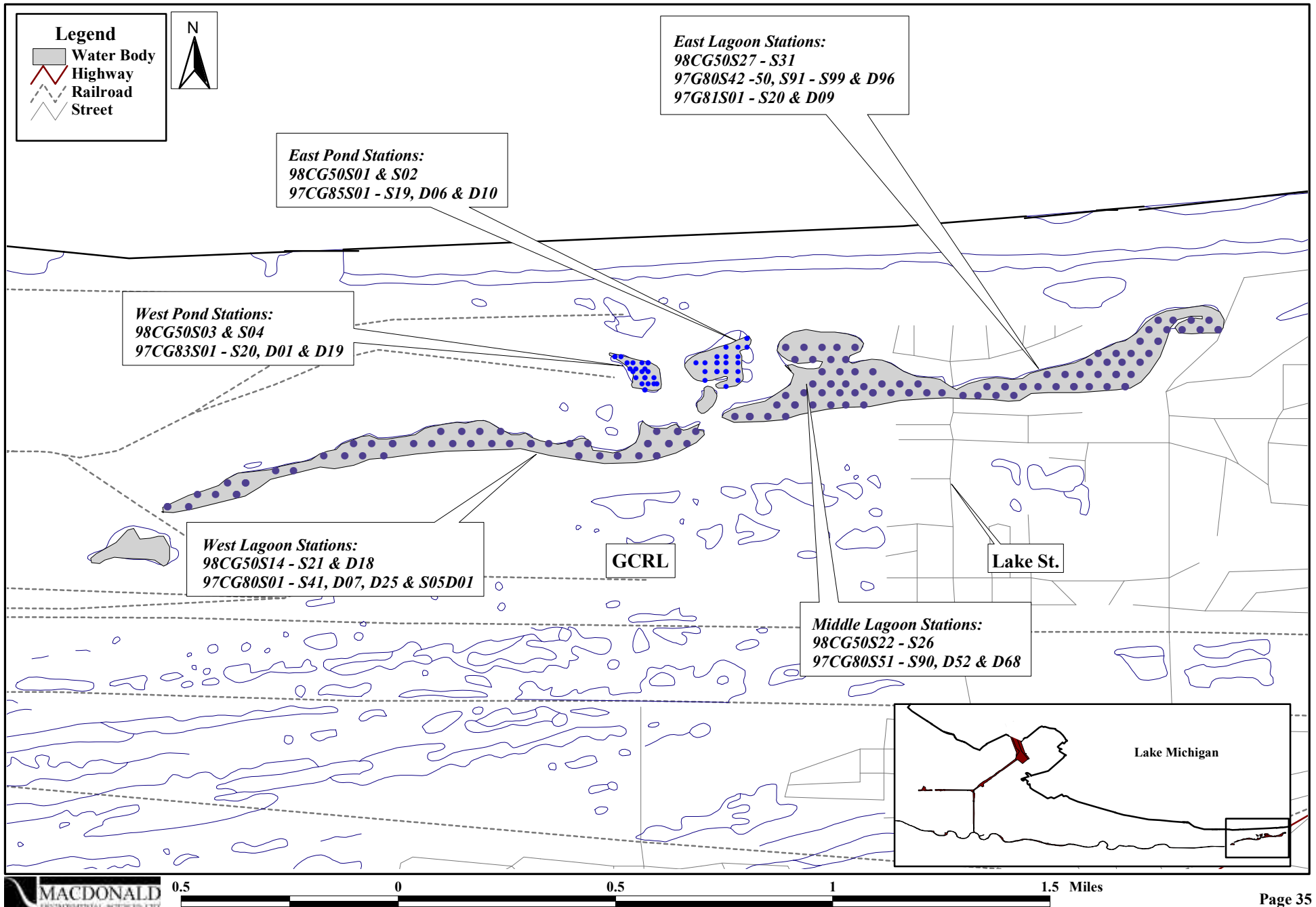


Figure 4.32b. Location of sediment sampling stations for Simon (2000).

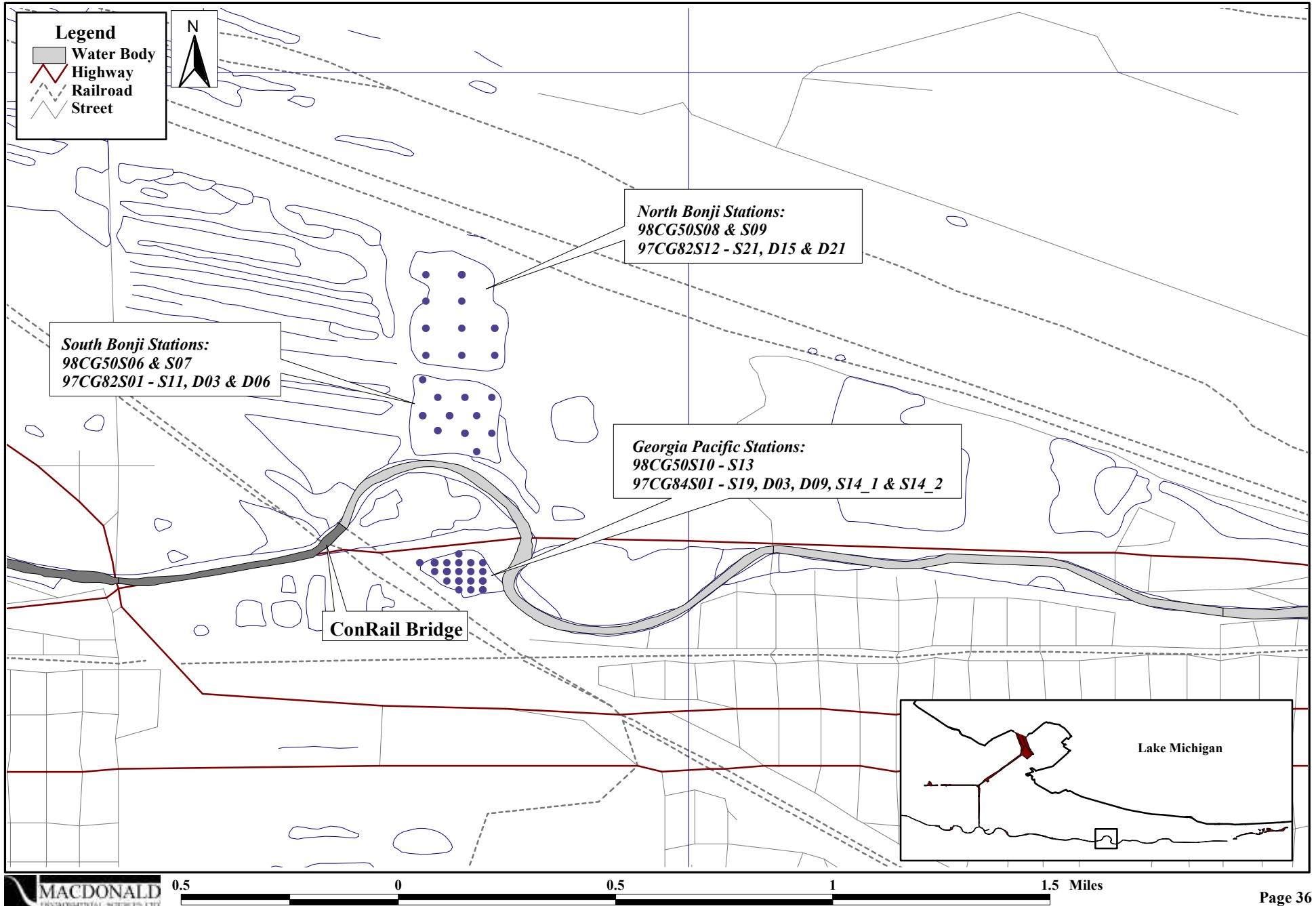


Figure 4.33. Location of sediment and benthic macroinvertebrate sampling stations for ThermoRetec (1999).

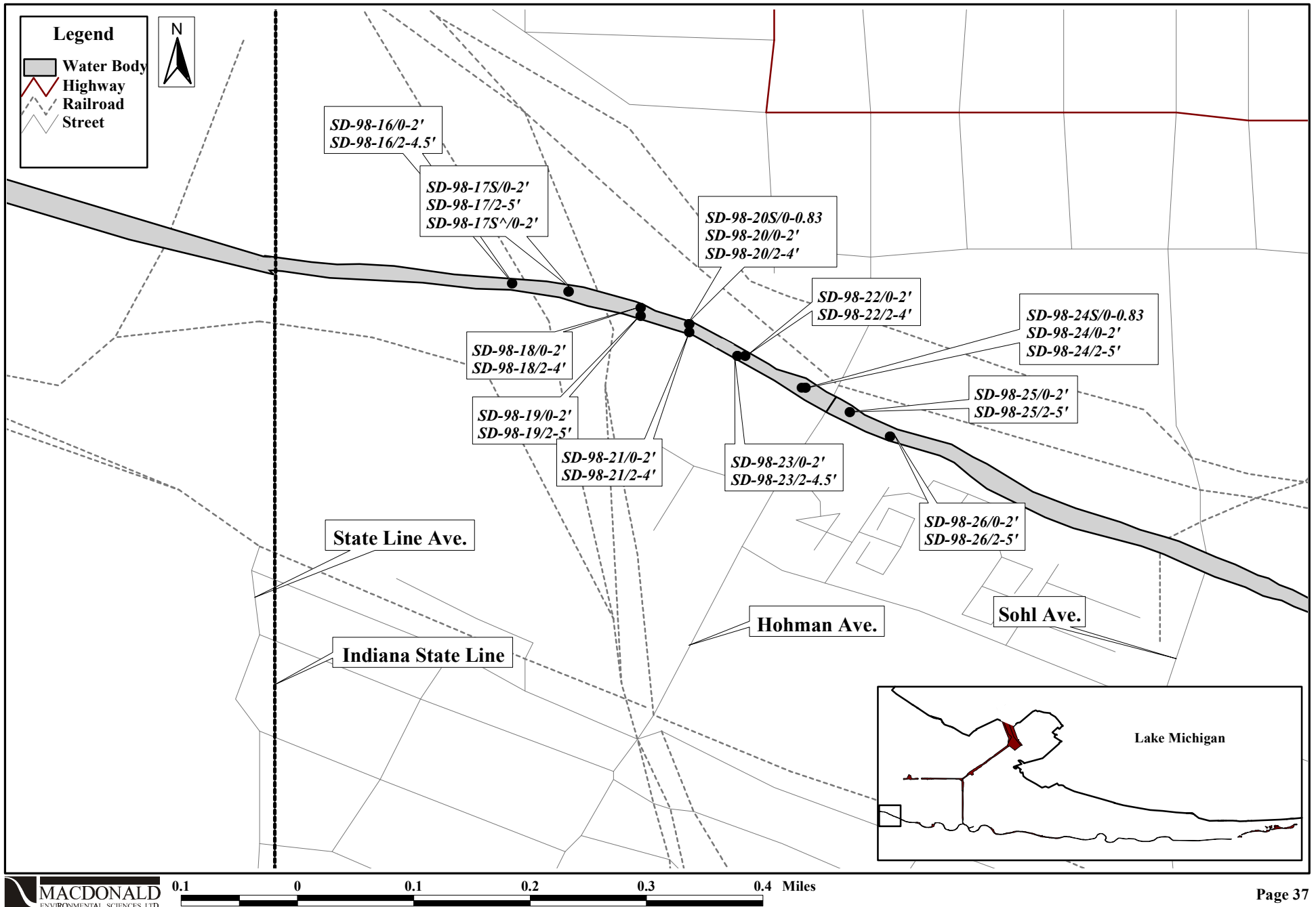


Figure 4.34. Location of sediment and benthic macroinvertebrate sampling stations for URS Greiner Woodward Clyde (1999).

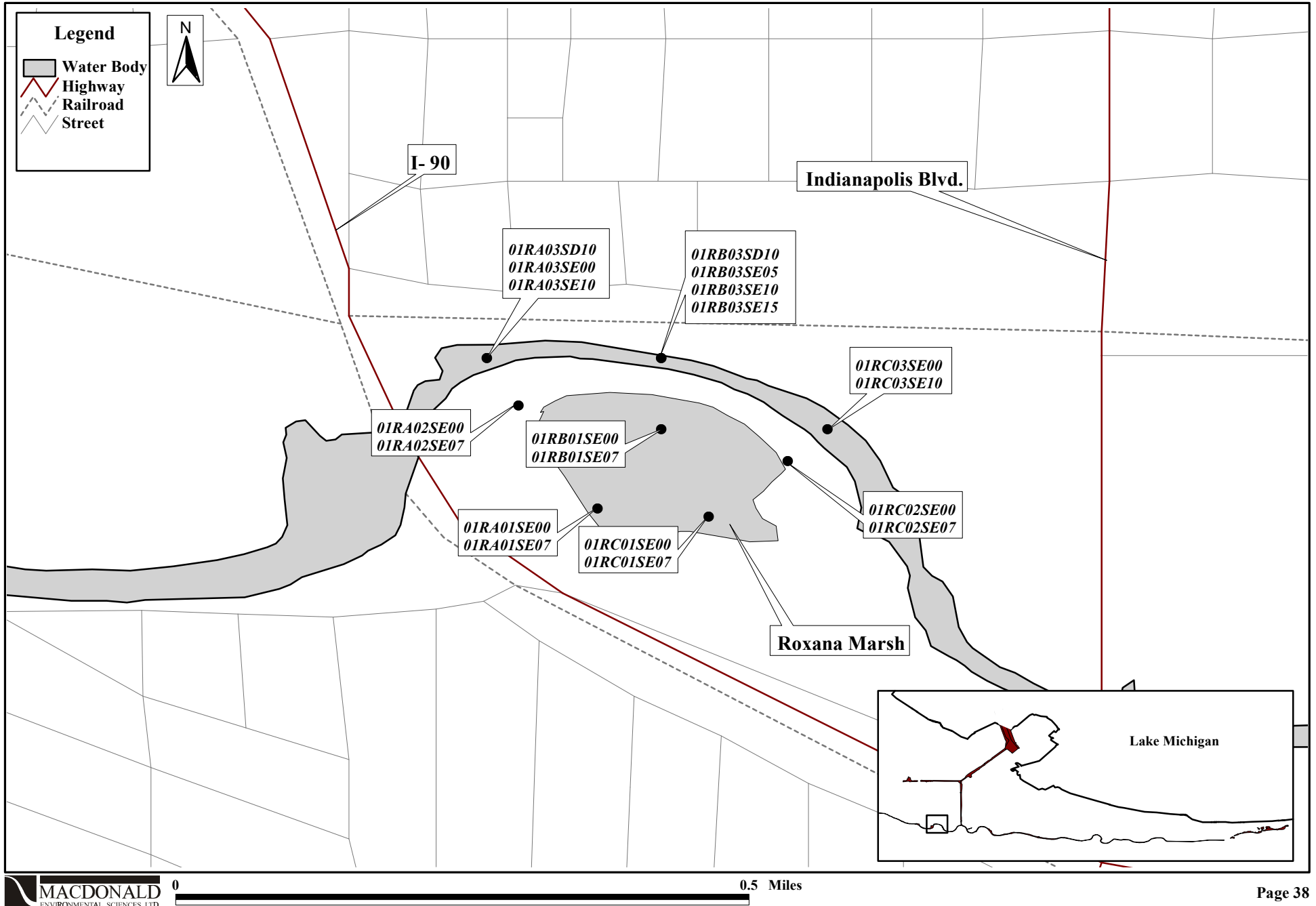


Figure 4.35. Location of benthic macroinvertebrate sampling stations for Simon et al. (2000).

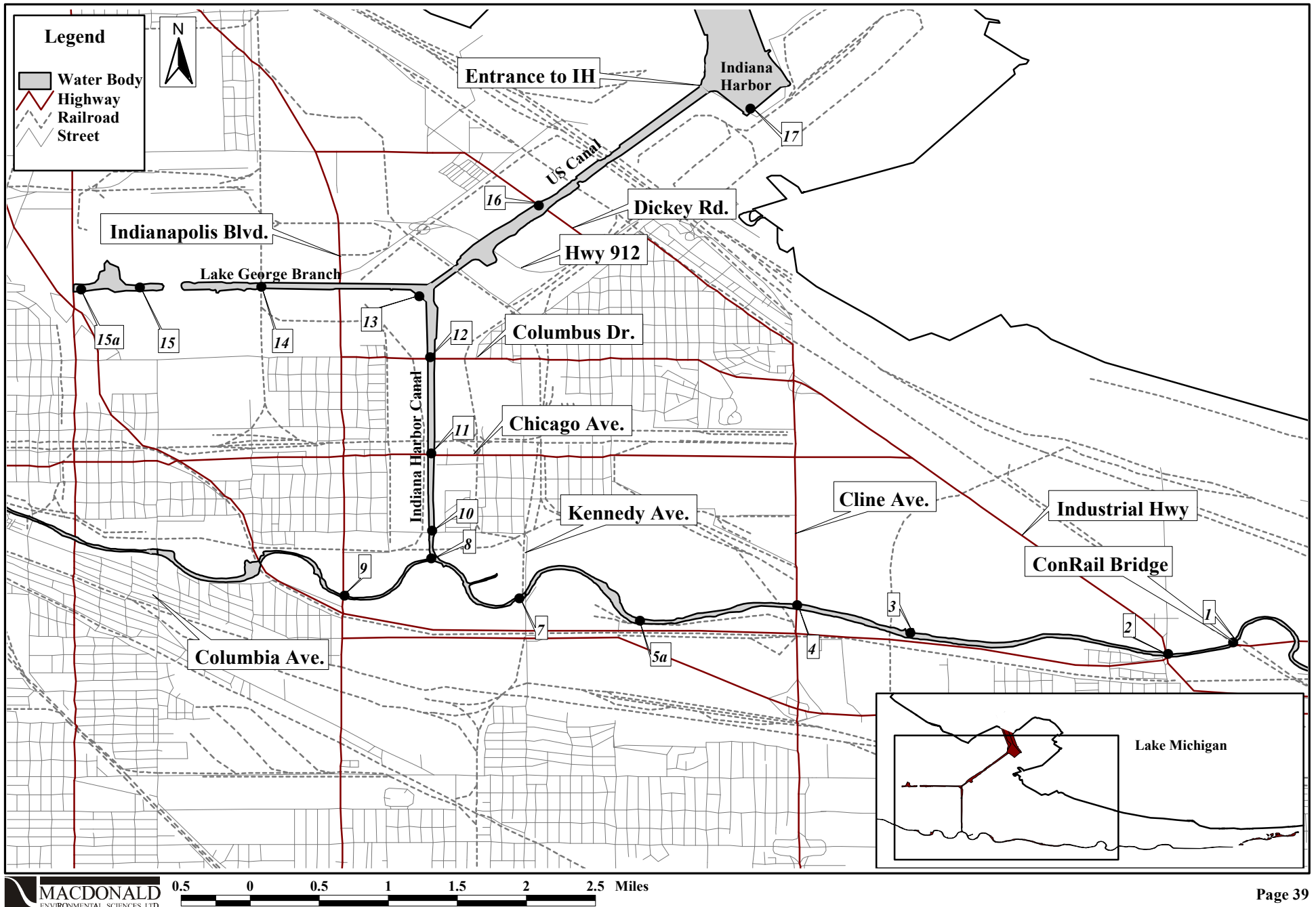




Figure 4.36. Location of sediment sampling stations for IDEM (1998).

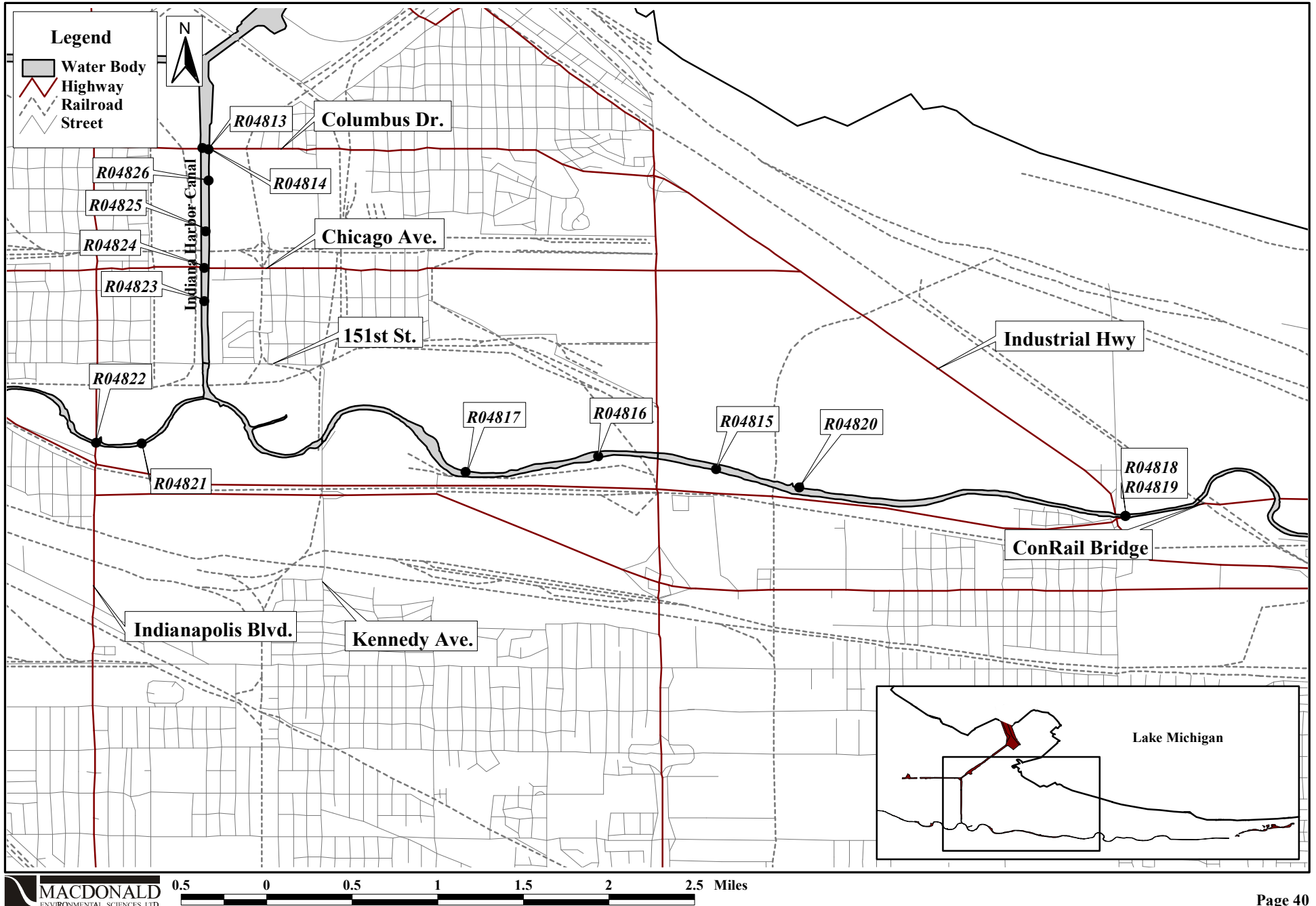


Figure 4.37. Location of sediment sampling stations for Exponent (1999) and Tetra Tech EM Inc. (1998).

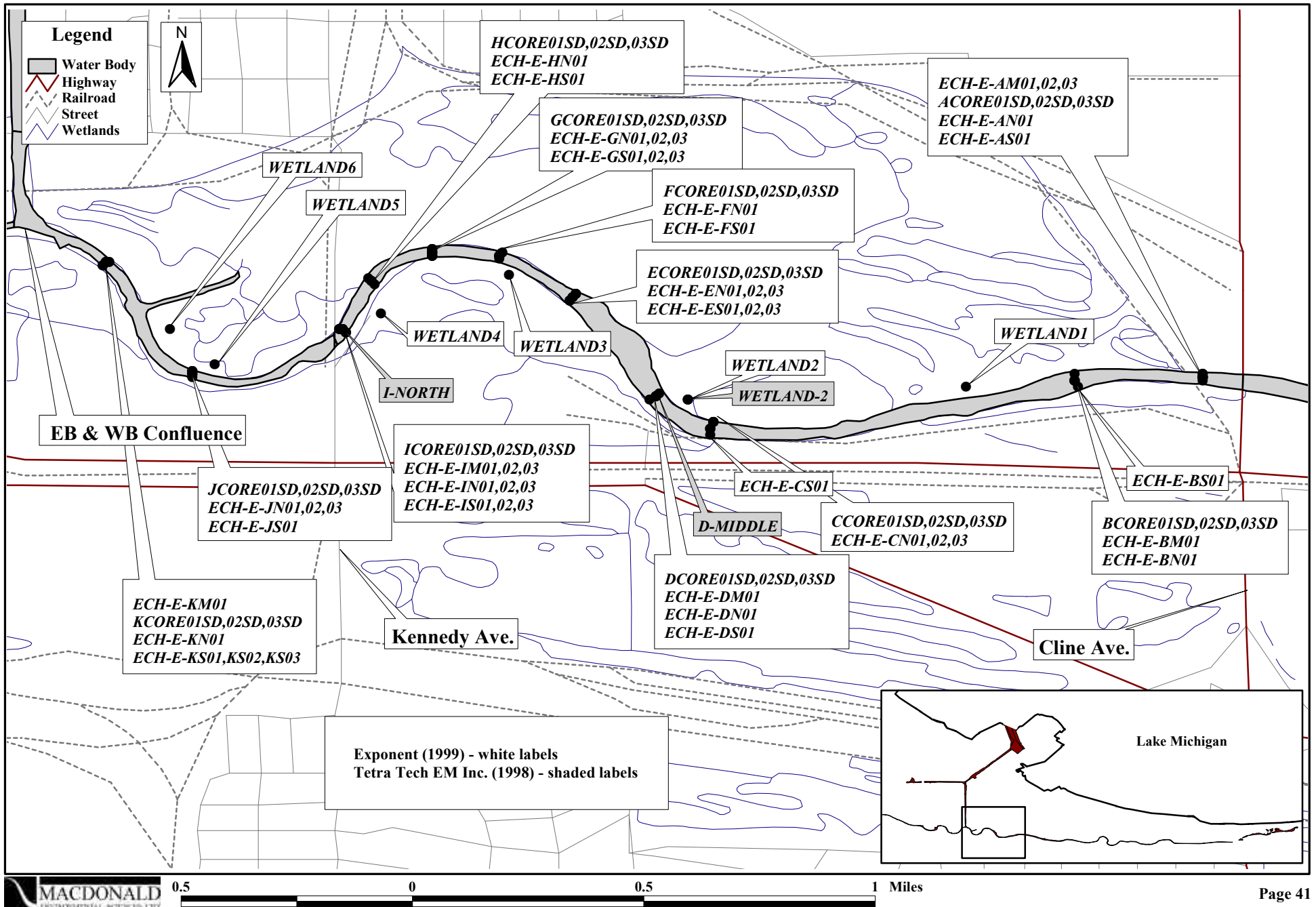


Figure 4.38. Location of sediment sampling stations for Maxim Technologies (1999); USGS (1999).

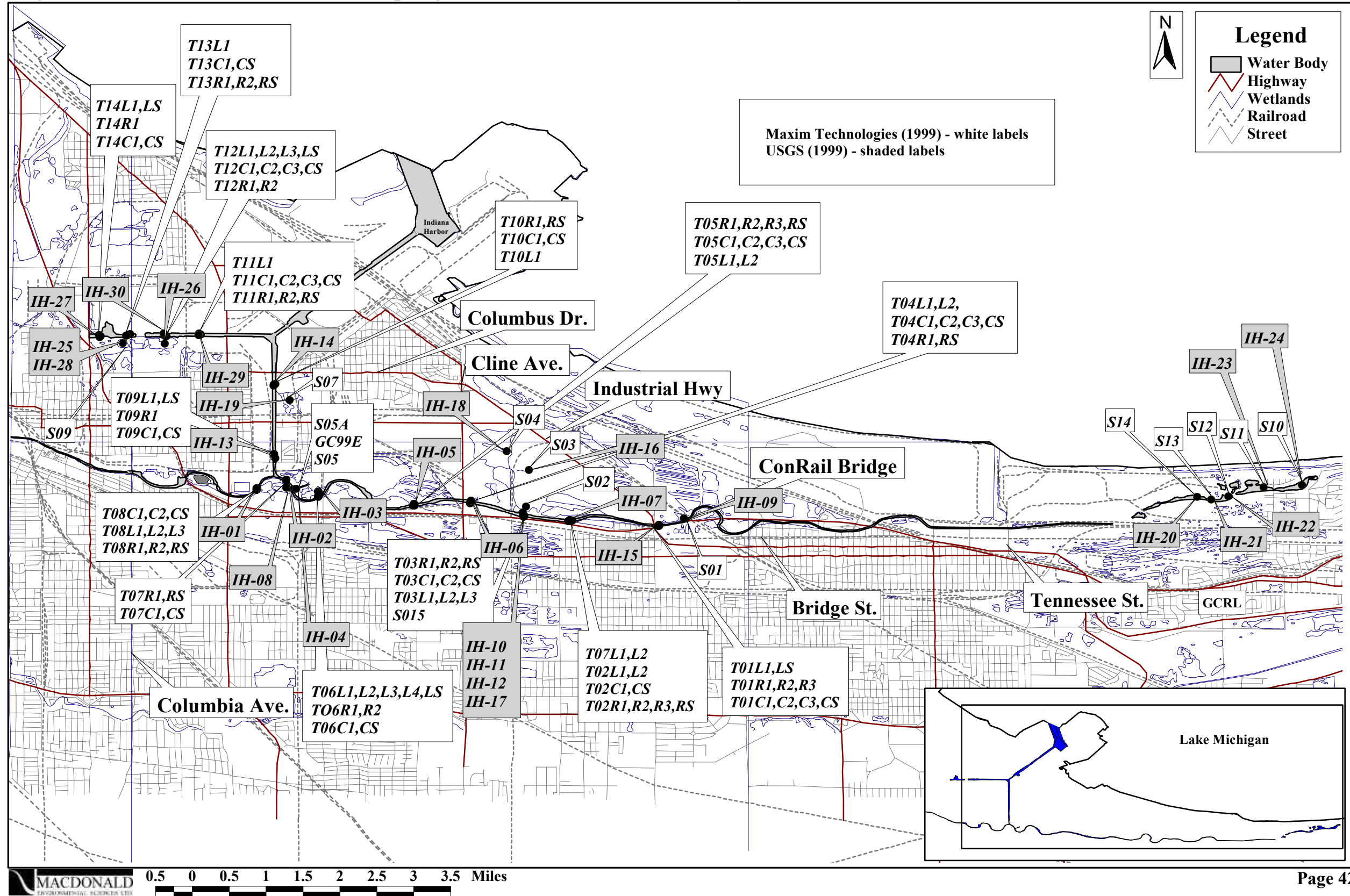


Figure 4.39. Location of sediment sampling stations for IDEM (1999).

