
Figures

Chapter 12 - US Canal

Figure 12.1. Location of sampling stations for surficial sediment chemistry in the USC.

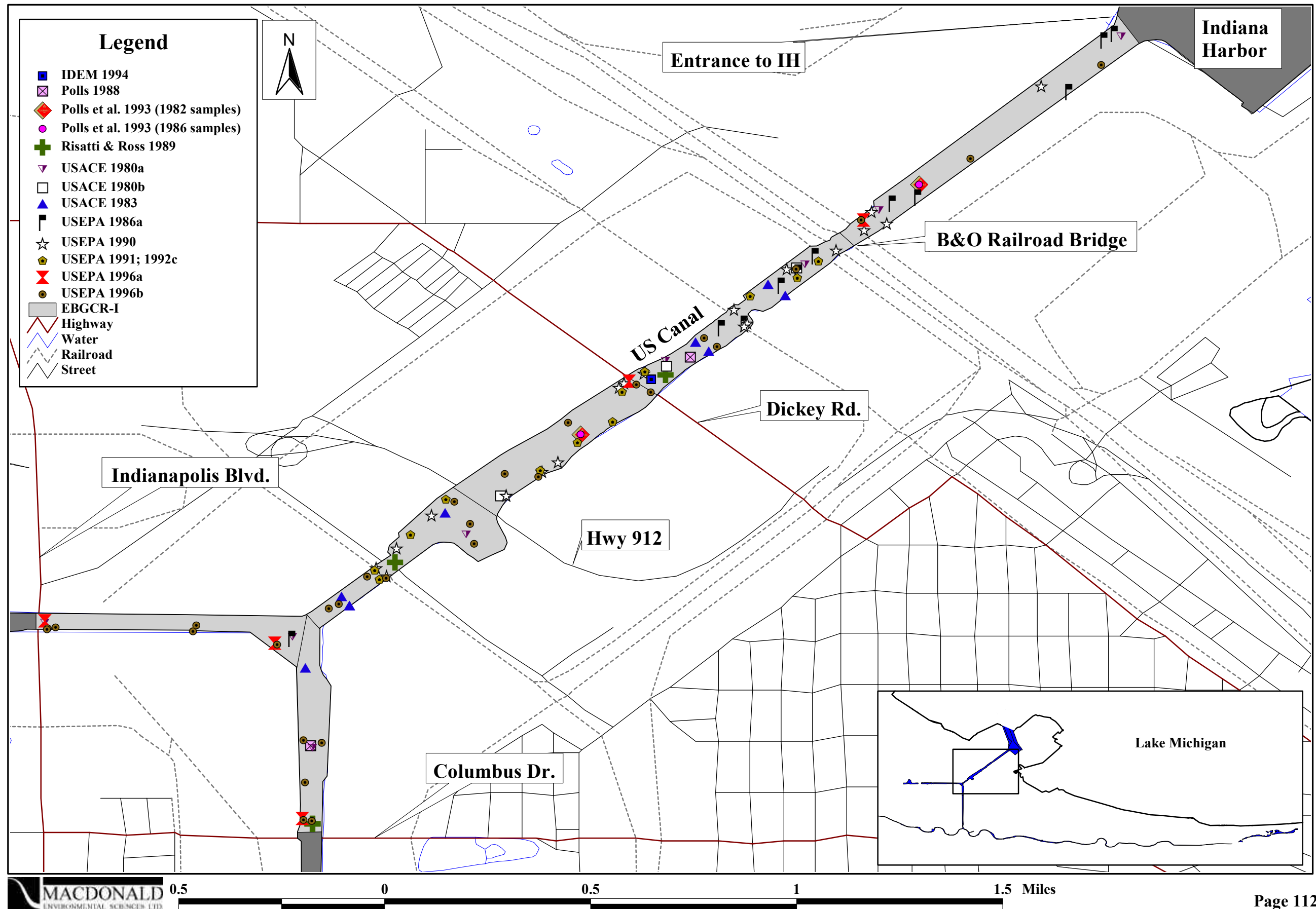


Figure 12.2. Location of sampling stations for sub-surface sediment chemistry in the USC.

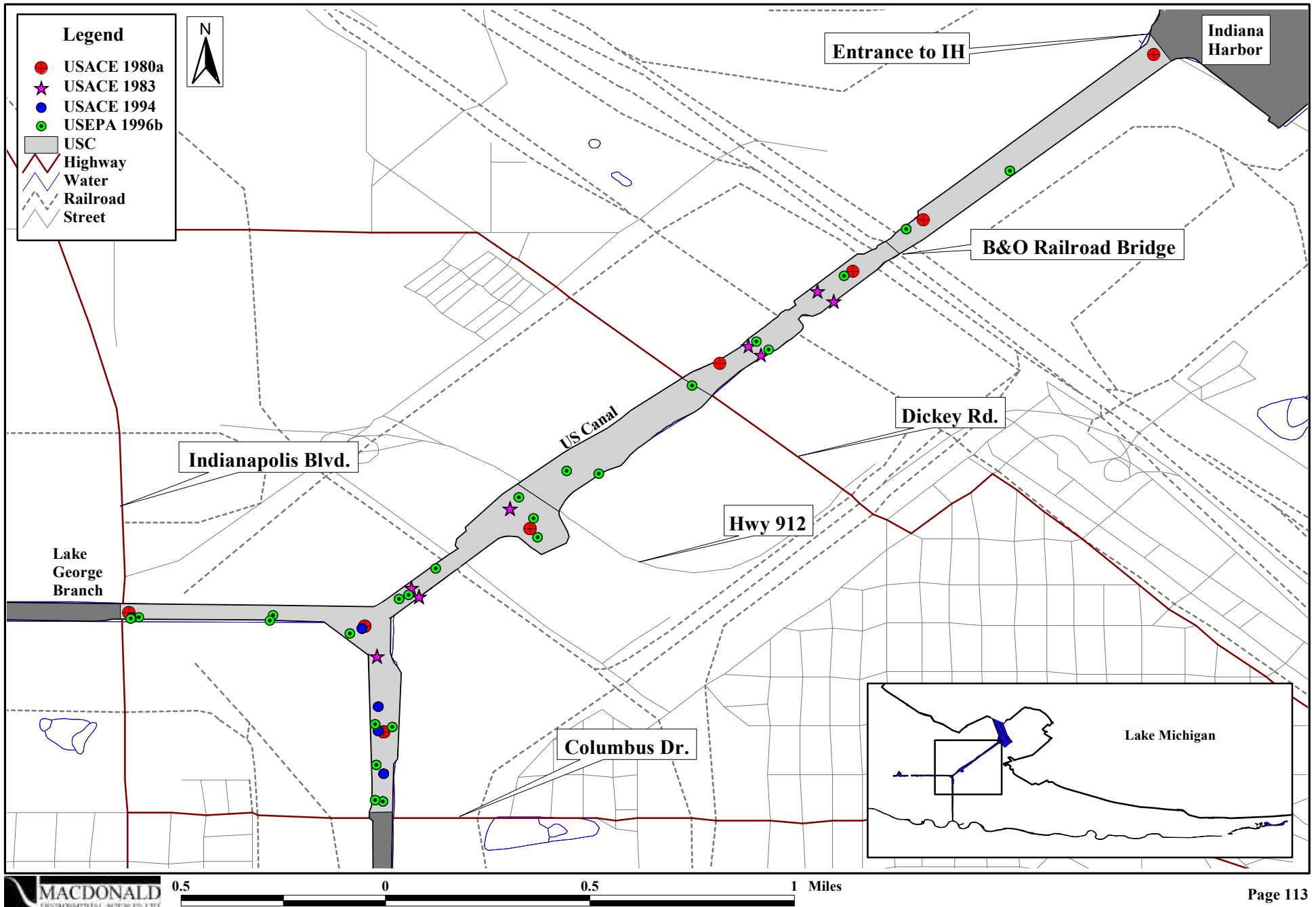


Figure 12.3. Location of sampling stations for sediment toxicity testing in the USC.

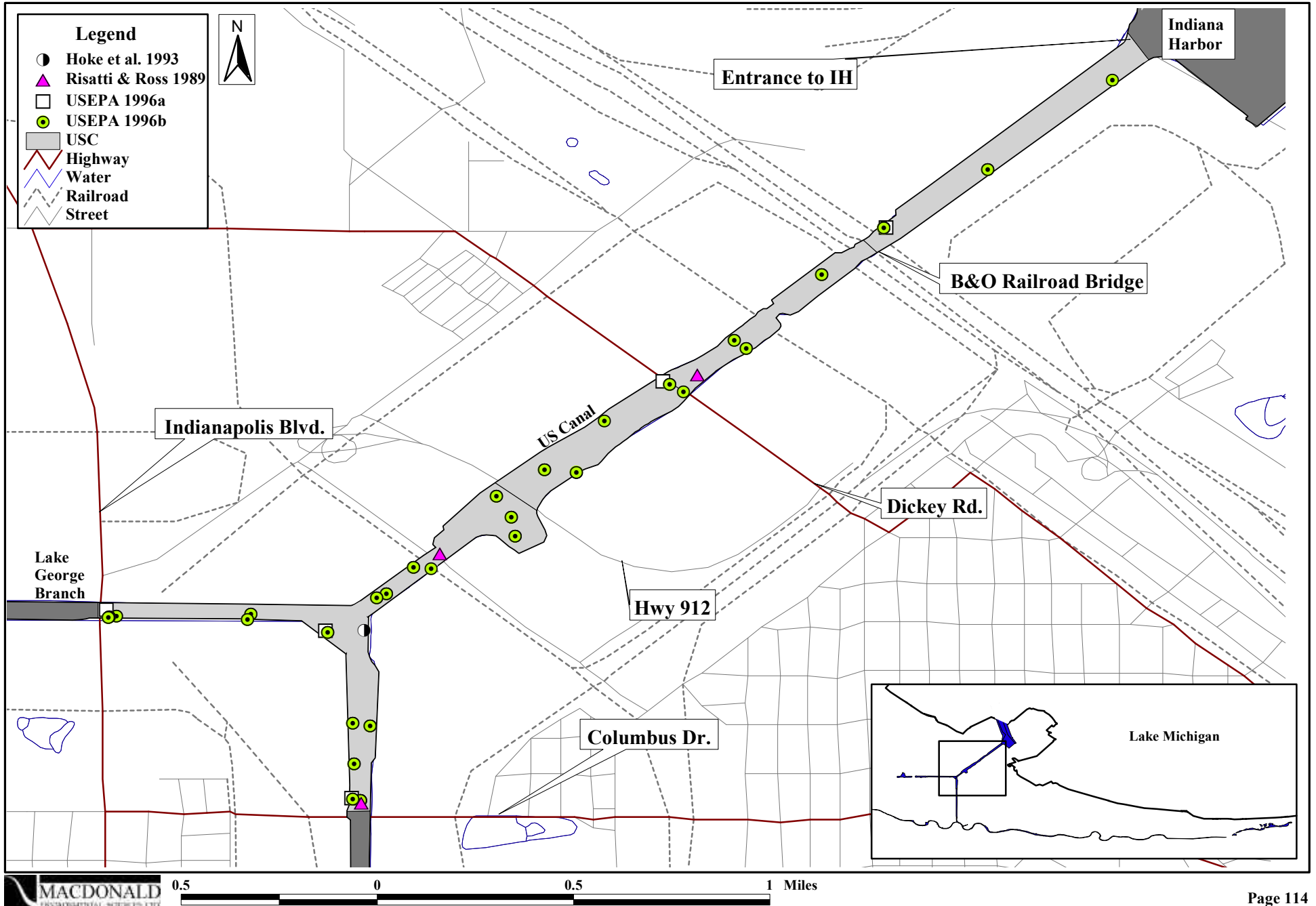


Figure 12.4. Areal extent of altered and unaltered benthic invertebrate communities in the USC.

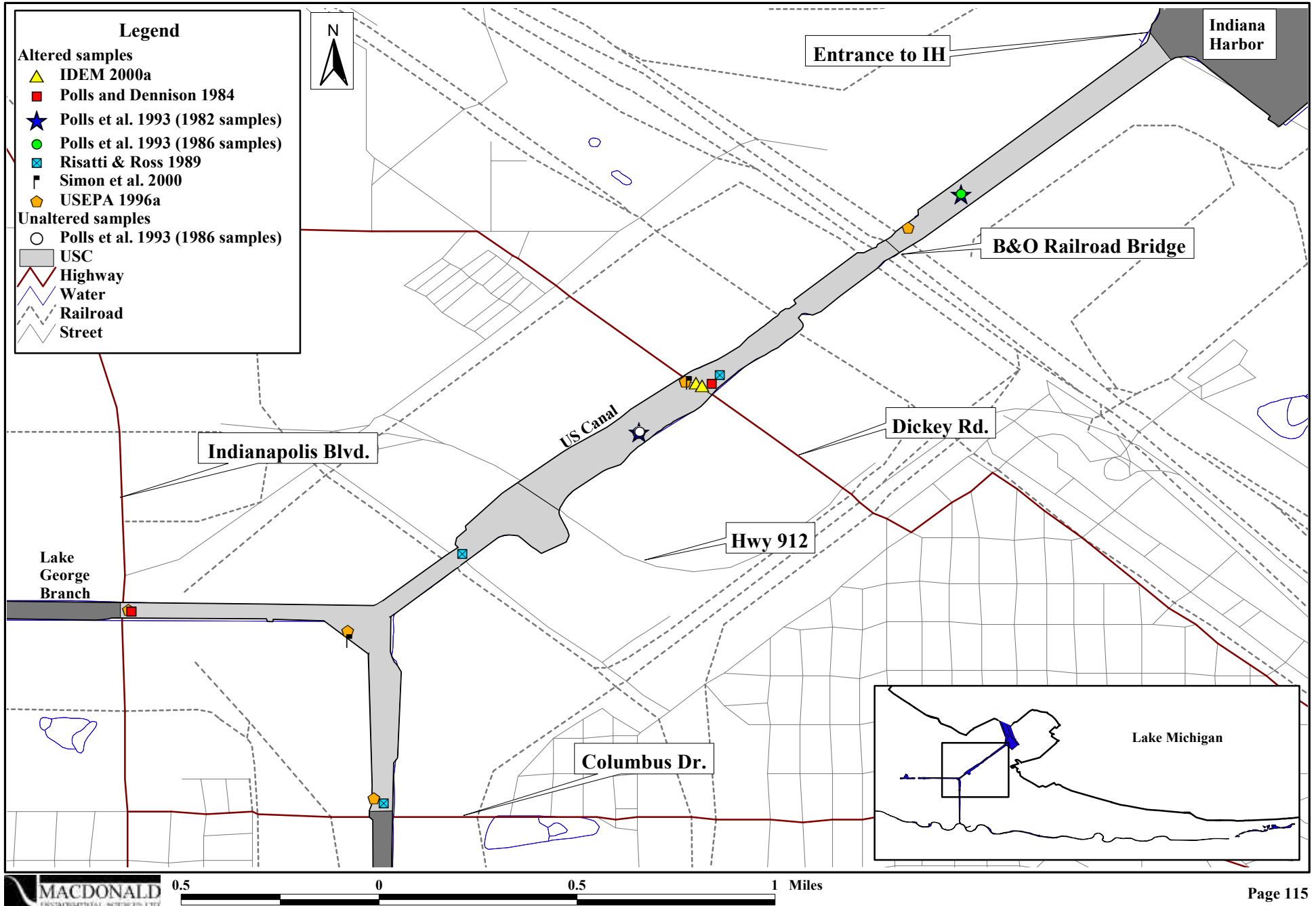


Figure 12.5. Location of sampling stations for tissue chemistry in the USC.

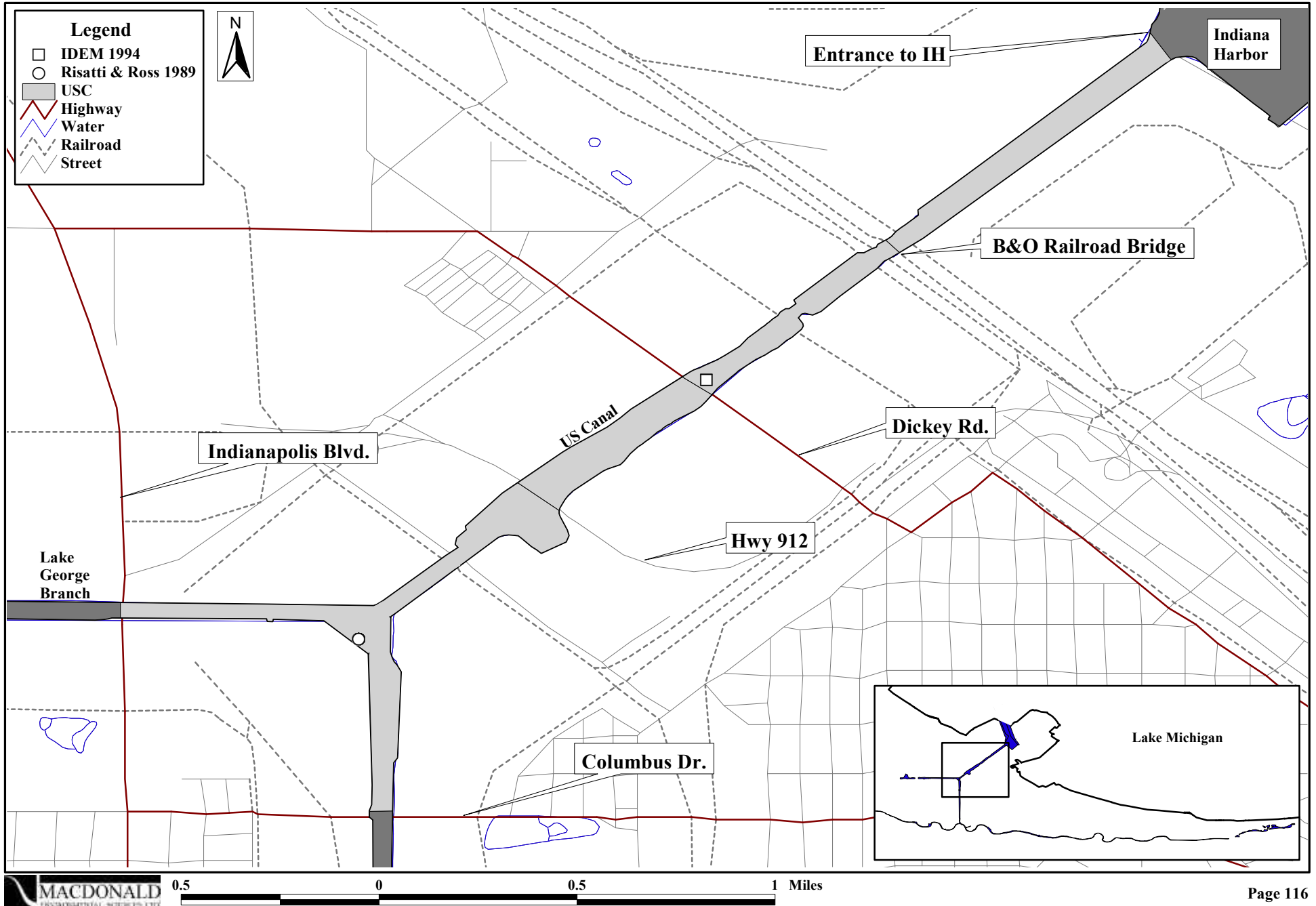


Figure 12.6a. Spatial distribution of mean PEC-Qs in surficial sediments within the Columbus Drive to Forks segment of the USC.

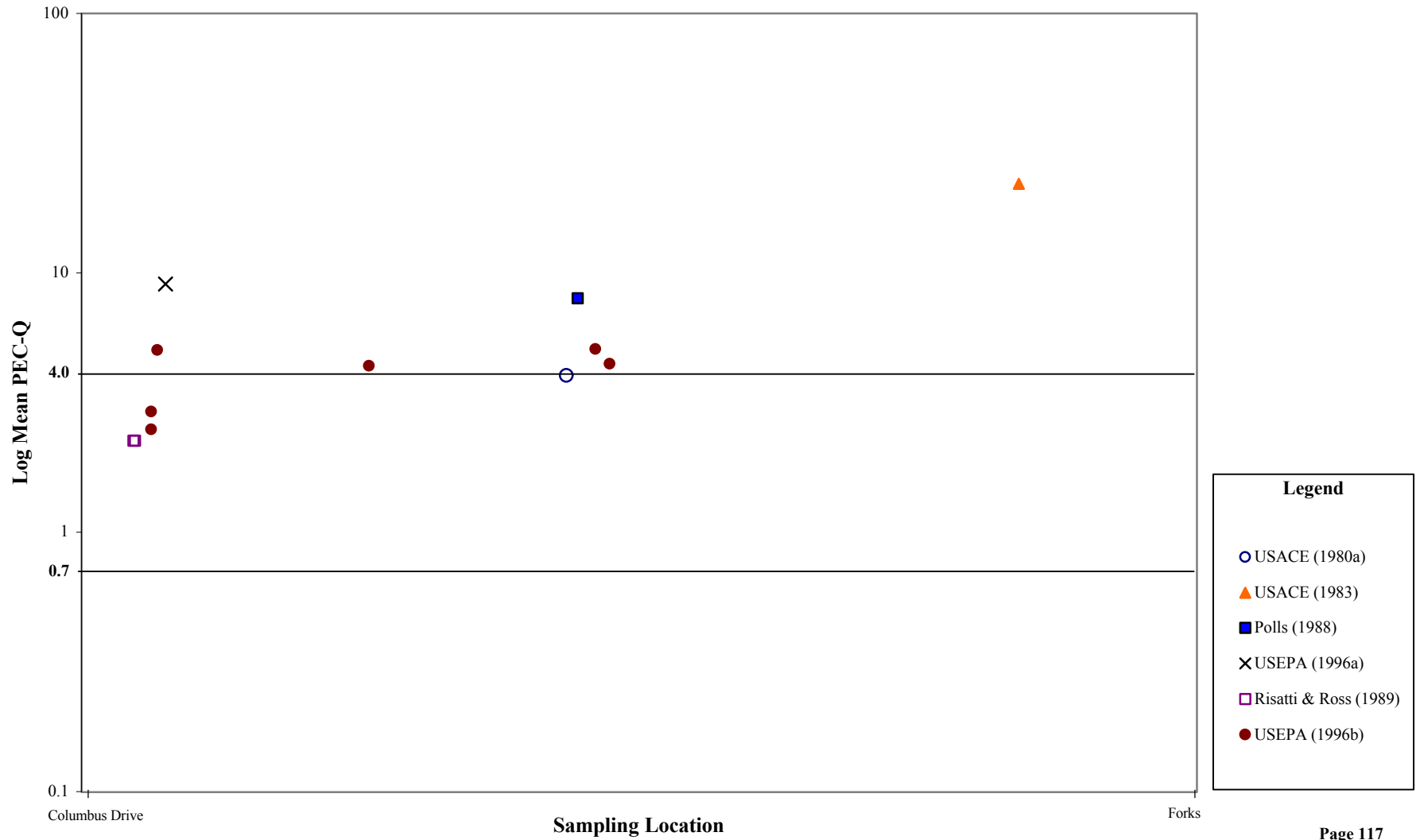


Figure 12.6b. Spatial distribution of mean PEC-Qs in surficial sediments within the Indianapolis Boulevard to Forks segment of the USC.

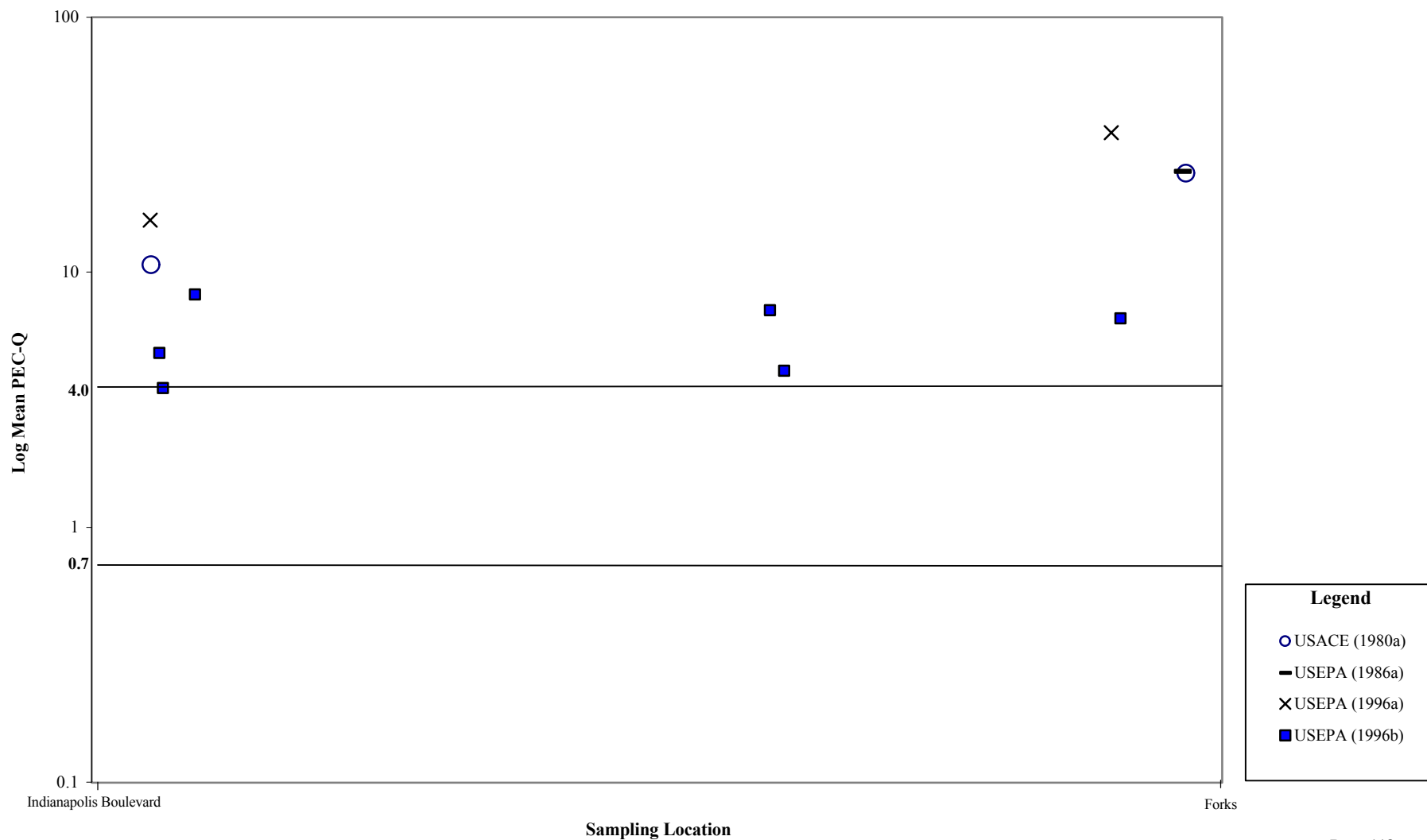


Figure 12.6c. Spatial distribution of mean PEC-Qs in surficial sediments within the Forks to the Indiana Harbor entrance segment of the USC.

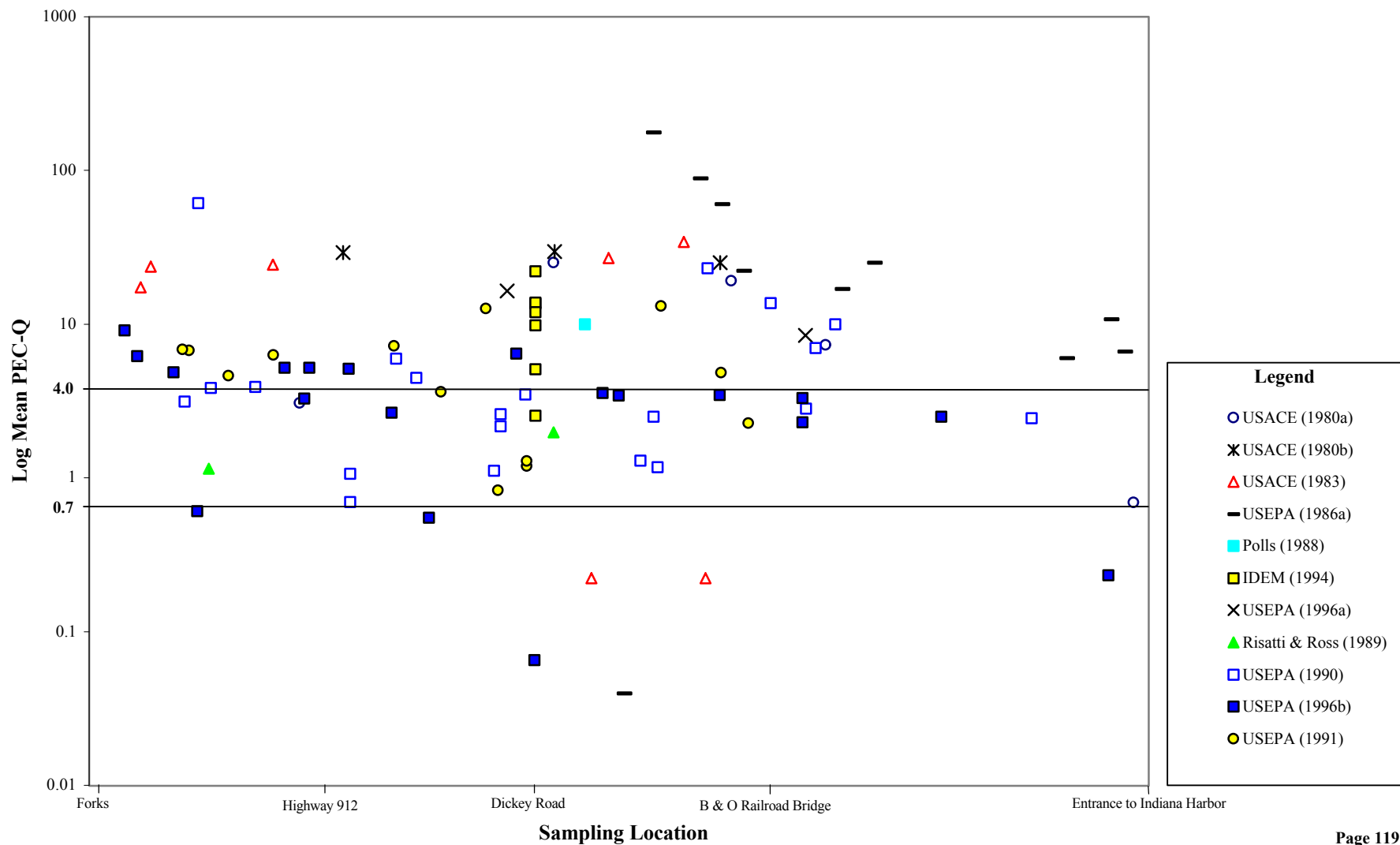


Figure 12.7. Areal extent of injury to surficial sediments in the USC.

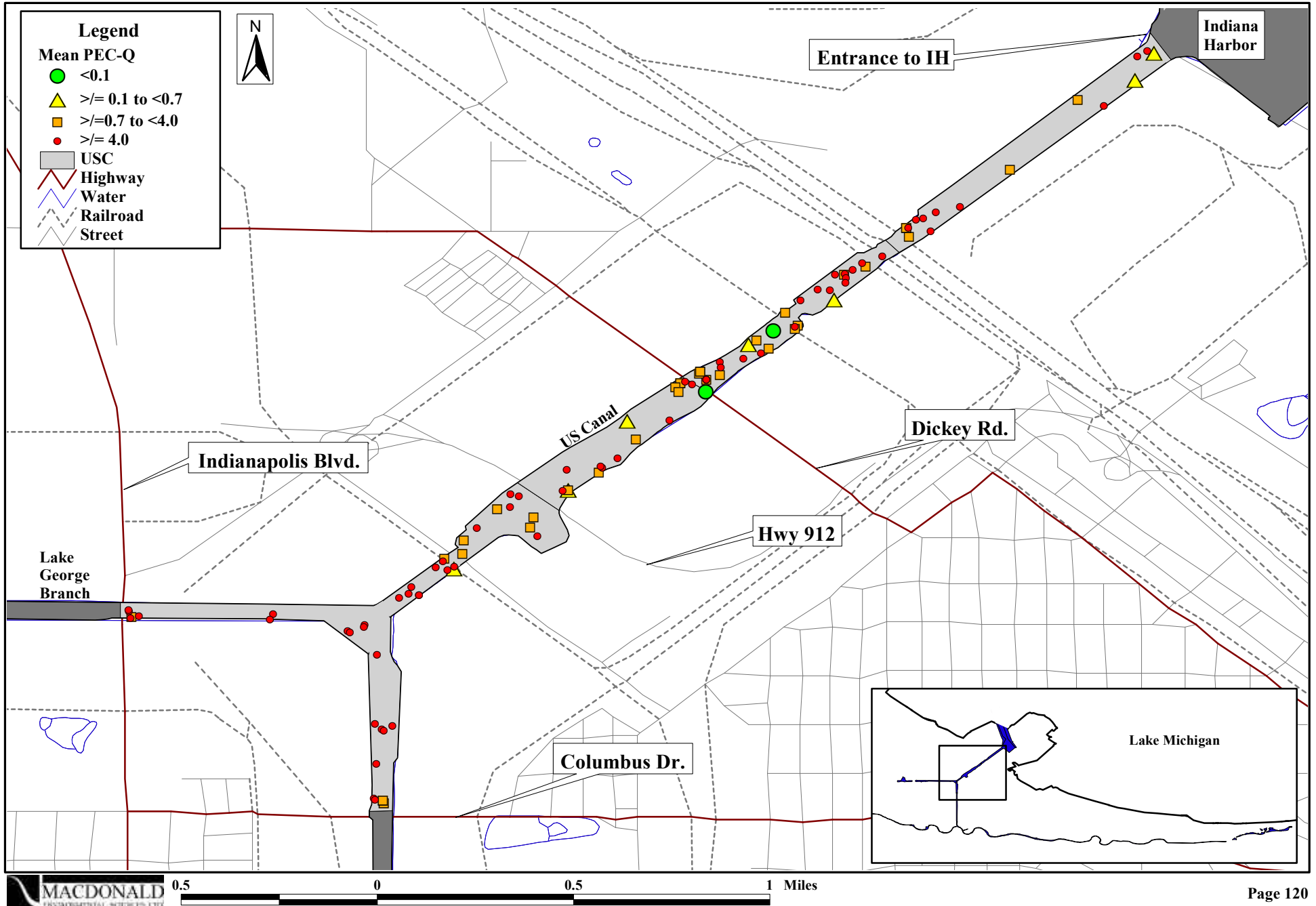


Figure 12.8a. Spatial distribution of mean PEC-Qs in sub-surface sediments within the Columbus Drive to Forks segment of the USC.

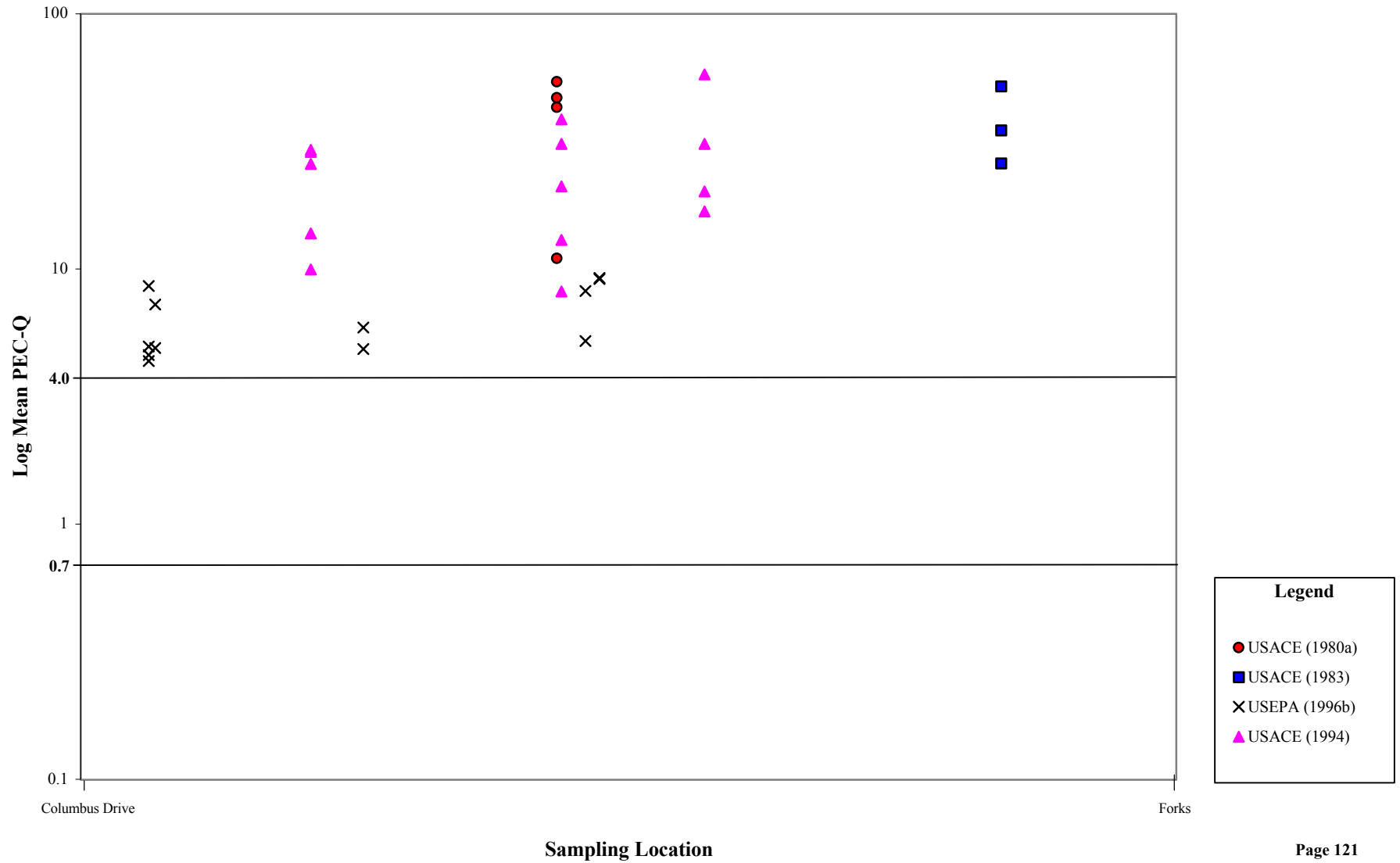


Figure 12.8b. Spatial distribution of mean PEC-Qs in sub-surface sediments within the Indianapolis Boulevard to Forks segment of the USC.



Figure 12.8c. Spatial distribution of mean PEC-Qs in sub-surface sediments within the Forks to the Indiana Harbor entrance segment of the USC.

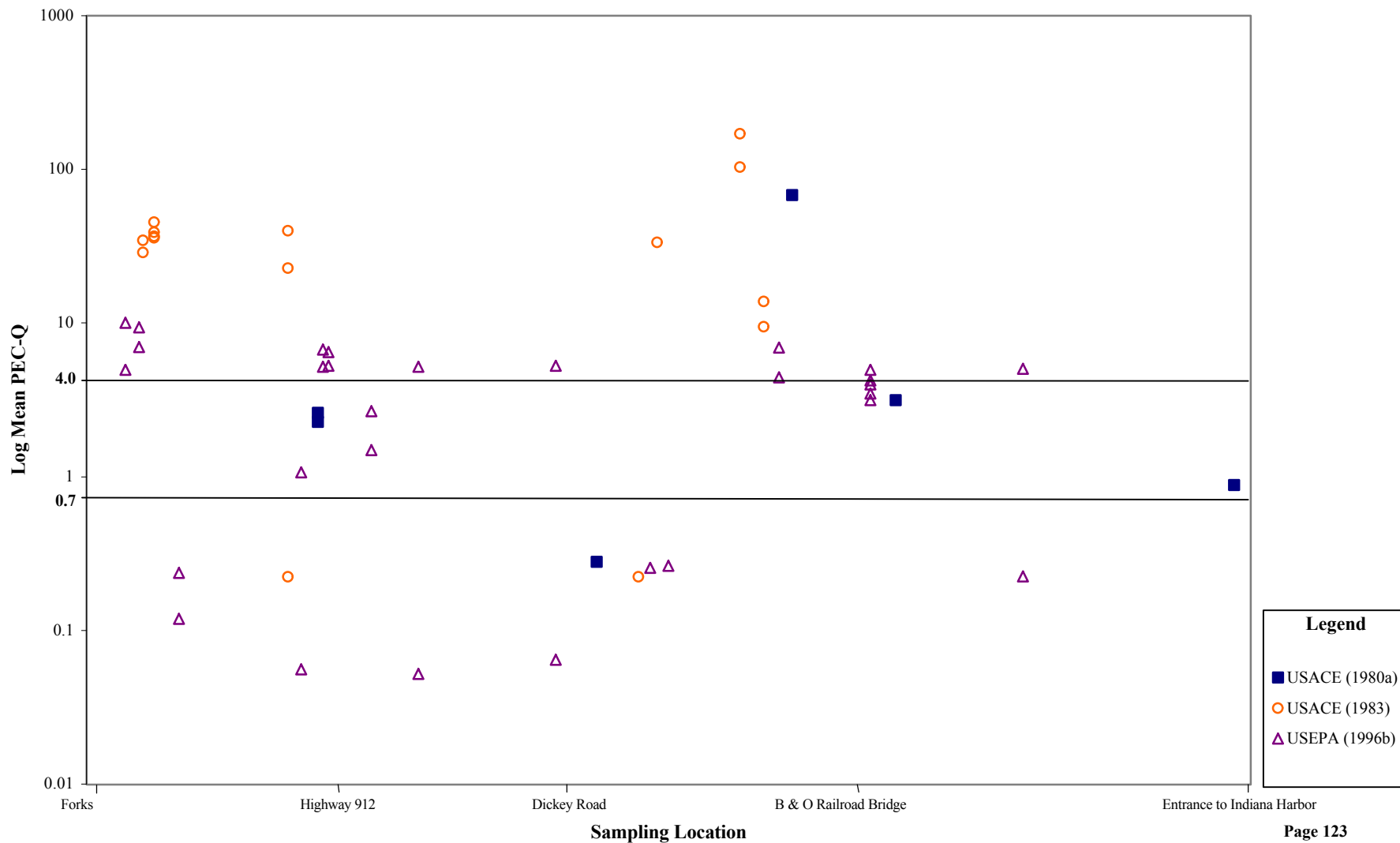


Figure 12.9. Areal extent of injury to sub-surface sediments in the USC.

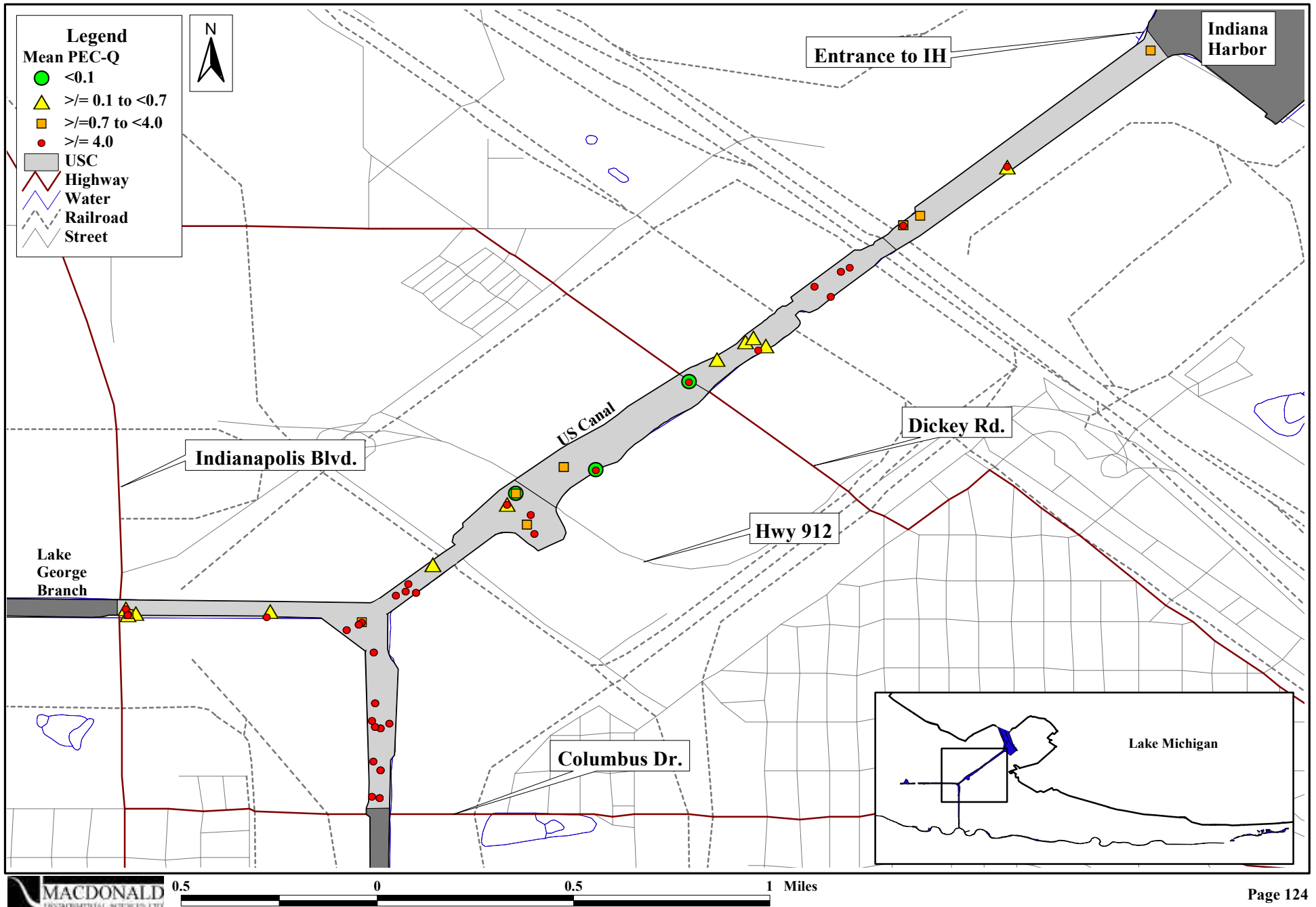


Figure 12.10. Areal extent of sediment toxicity in the USC.

