

Service Guidelines in Region 3 Presentation to the FAC

by Jeff Gosse

- Focus on Potential Impact Index (PII) scoring protocol
- Addressing the issue of macro siting



USFWS Region 3







Service Guidelines

A photograph of a white wind turbine with three blades, standing in a field of green corn. The sky is a clear, bright blue. The text of the slide is overlaid on the image.

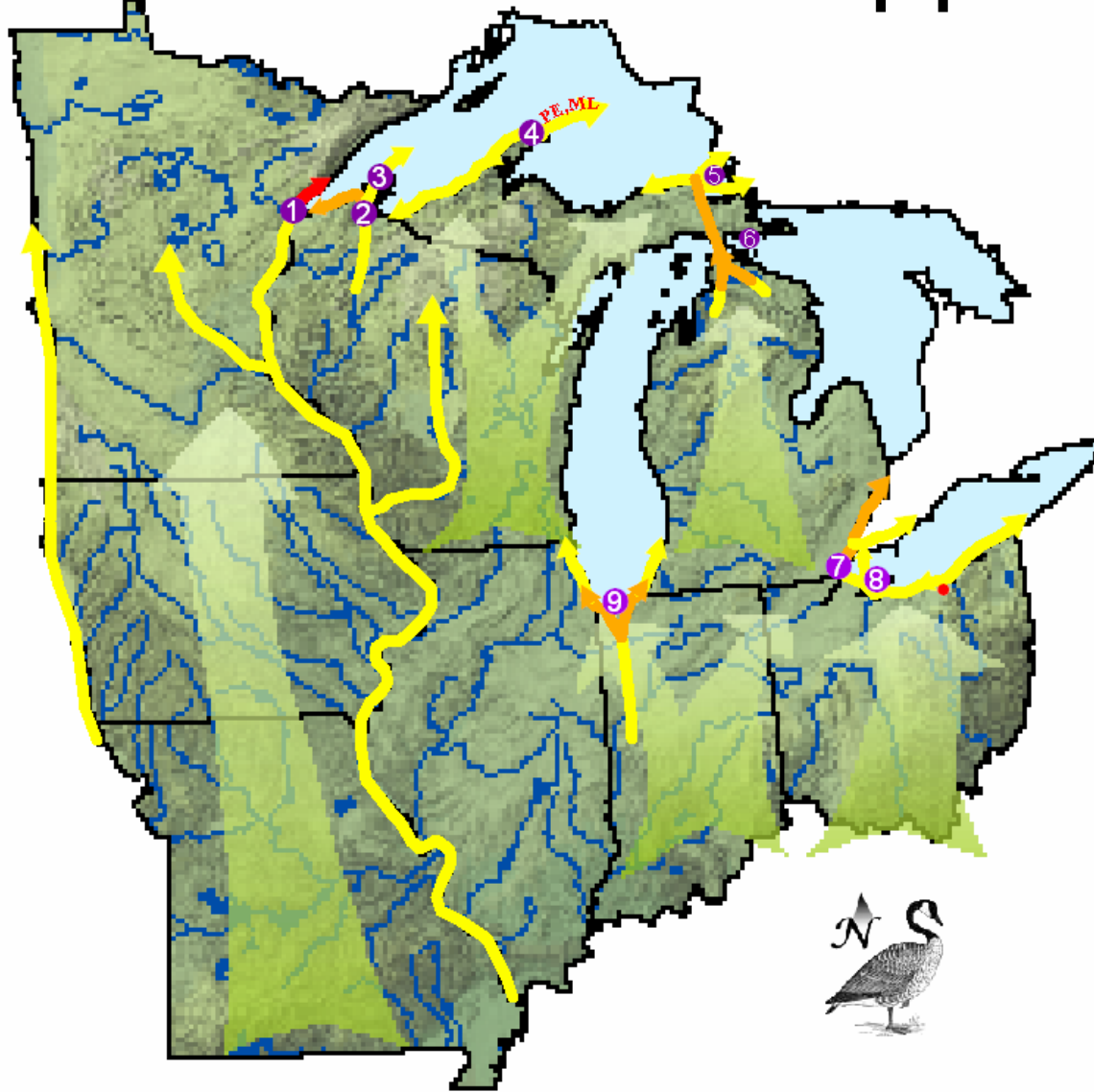
- PII scoring protocol has not been used in the Region
- Typically, developers are not contacting Service or states until sites are chosen
- Question may be, not whether Guidelines are adequate, but how to achieve early consultation

Three Examples of Wind Development in Region 3

- Example 1: Macro Relocation
- Example 2: Boundary Adjustment
- Example 3: Minimal Change

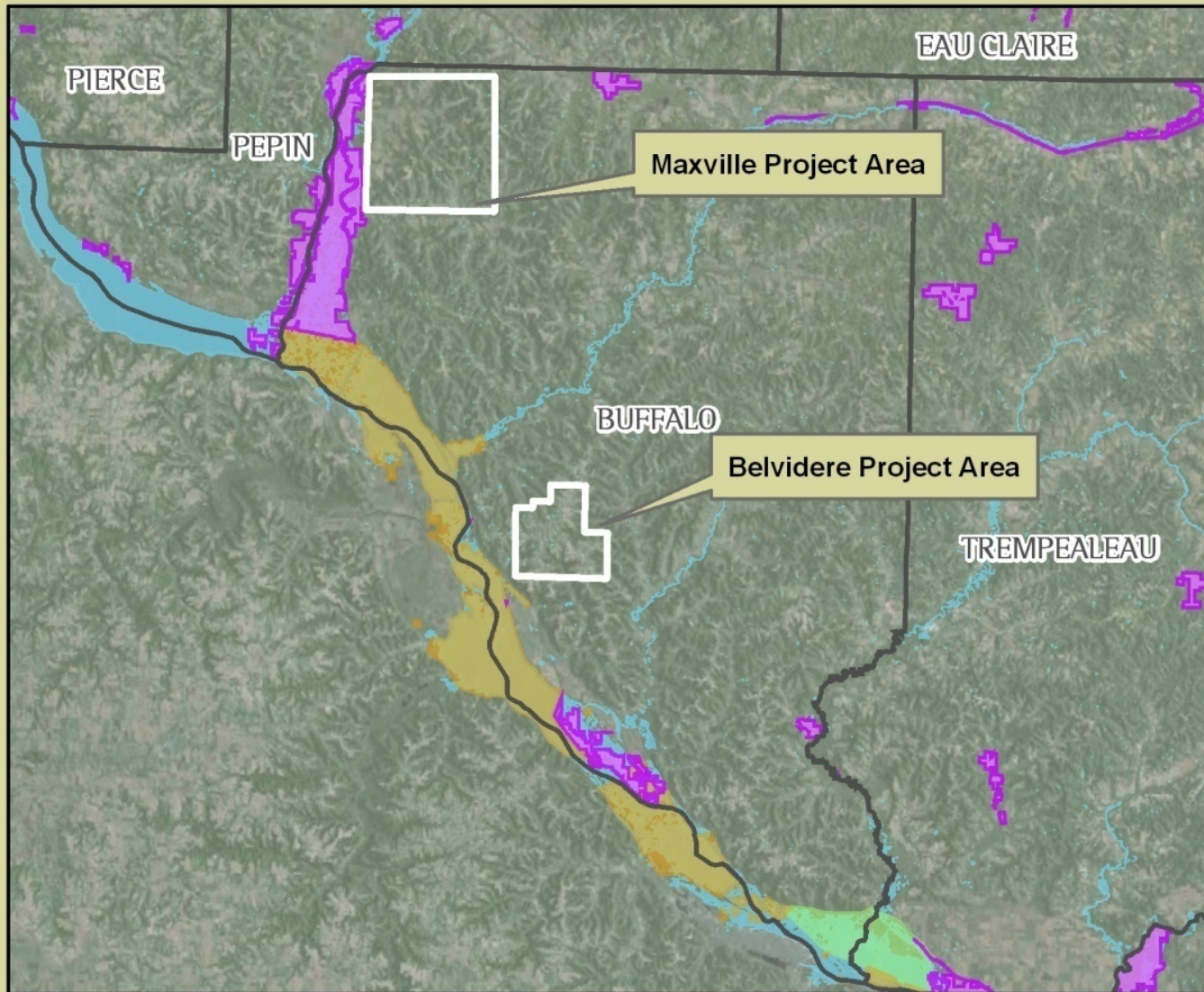


Example 1 – Mississippi River




SPRING RAPTOR MIGRATION ROUTES

Proposed Buffalo County, WI Wind Farm



Legend

-  Initial Project Areas
-  Wisconsin Counties
-  Upper Miss NFWR
-  State of WI Lands
-  Trempealeau NWR



0 2.5 5 10 Miles

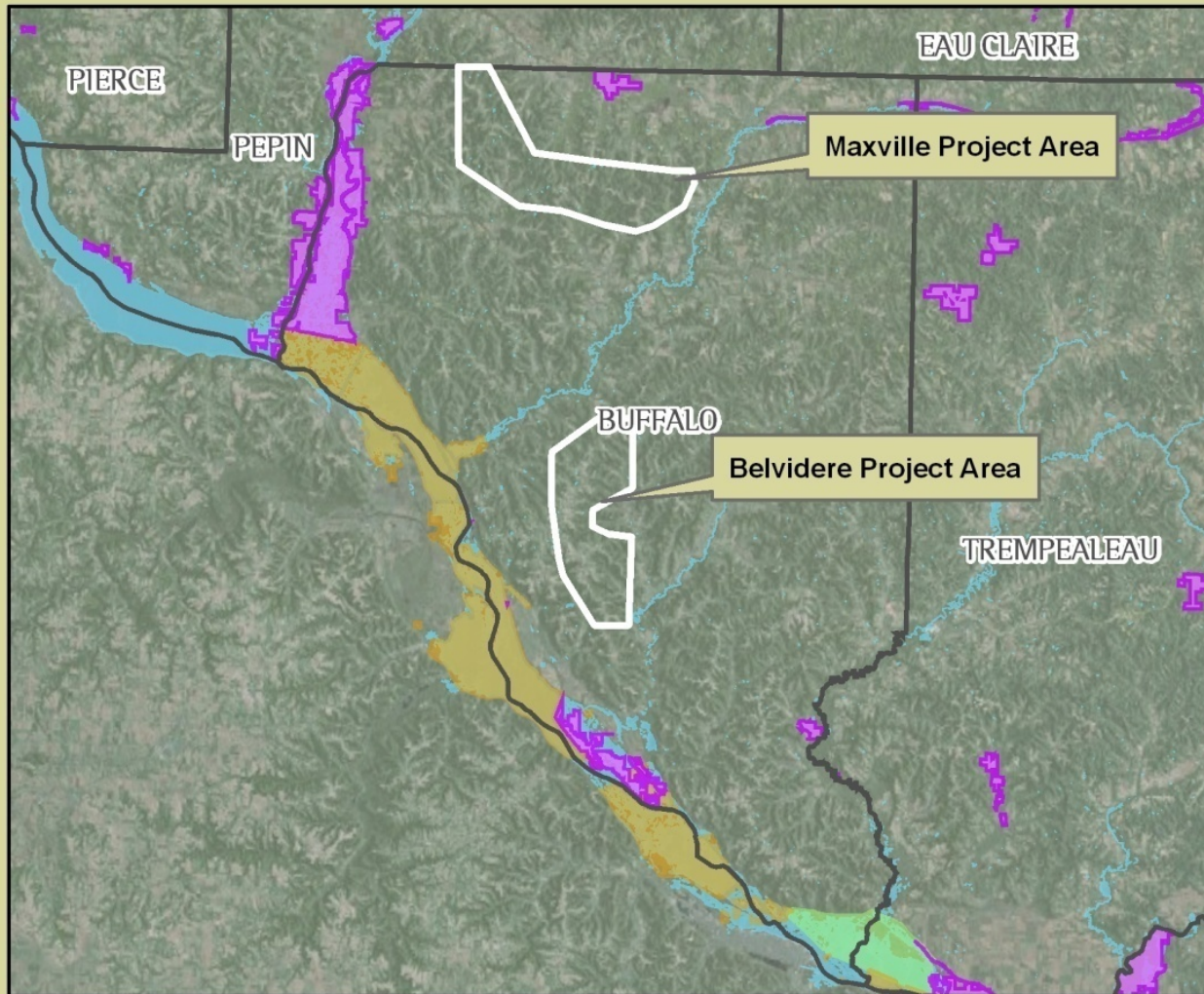
Mapping Provided By:



Natural Resources Consulting, Inc.

www.nrc-inc.net

Proposed Buffalo County, WI Wind Farm



Legend

- Modified Project Areas
- Wisconsin Counties
- Upper Miss NFWR
- State of WI Lands
- Trempealeau NWR



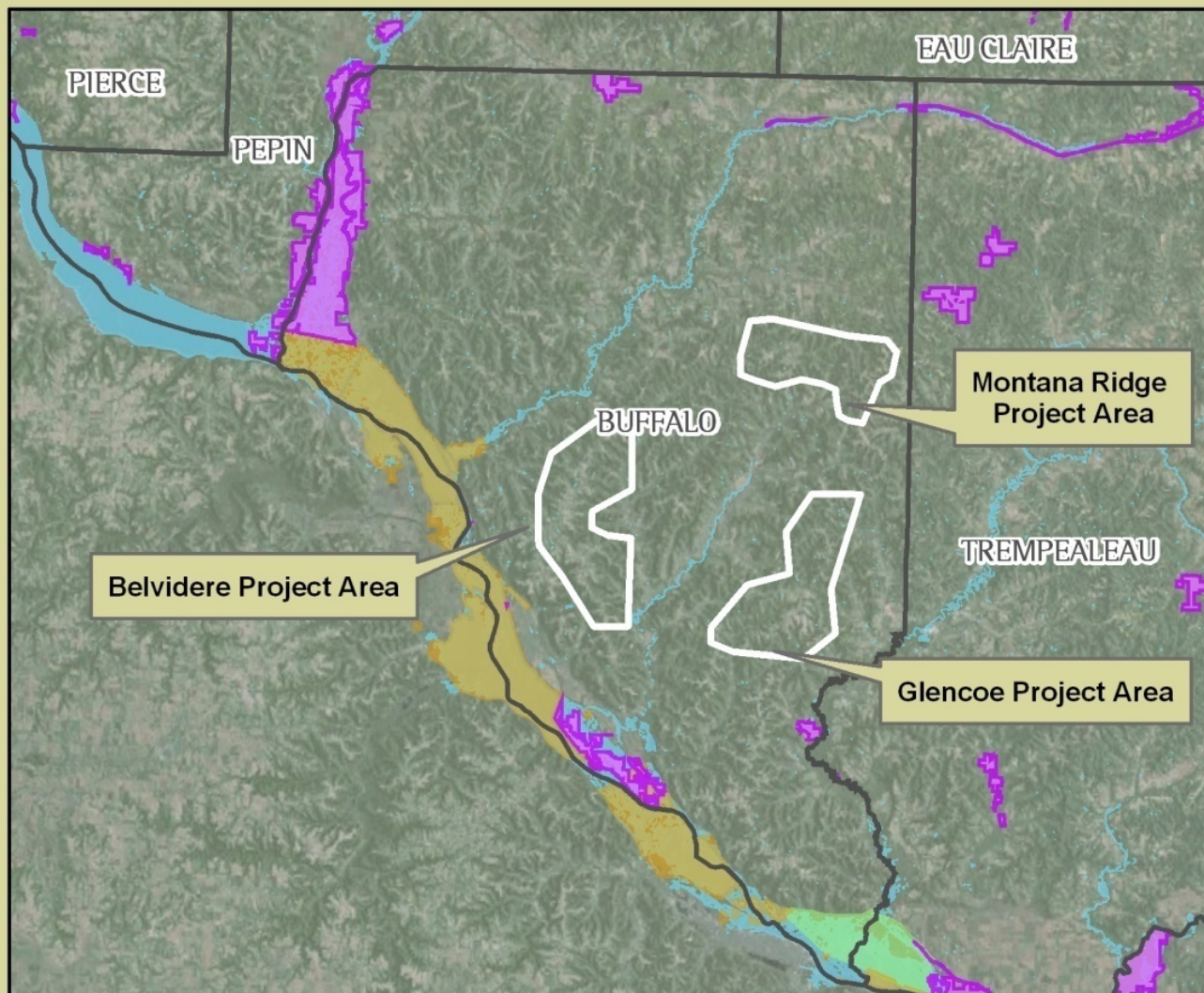
0 2.5 5 10 Miles

Mapping Provided By:



www.nrc-inc.net

Proposed Buffalo County, WI Wind Farm



Legend

- Current Project Areas
- Wisconsin Counties
- Upper Miss NFWR
- State of WI Lands
- Trempealeau NWR



0 2.5 5 10
Miles

Mapping Provided By:



Episodic

Events



- Estimated 3,000 - 5000 fatalities

Kentland

Goodland

Remington

Example 2 Benton County, IN



Benton County, IN

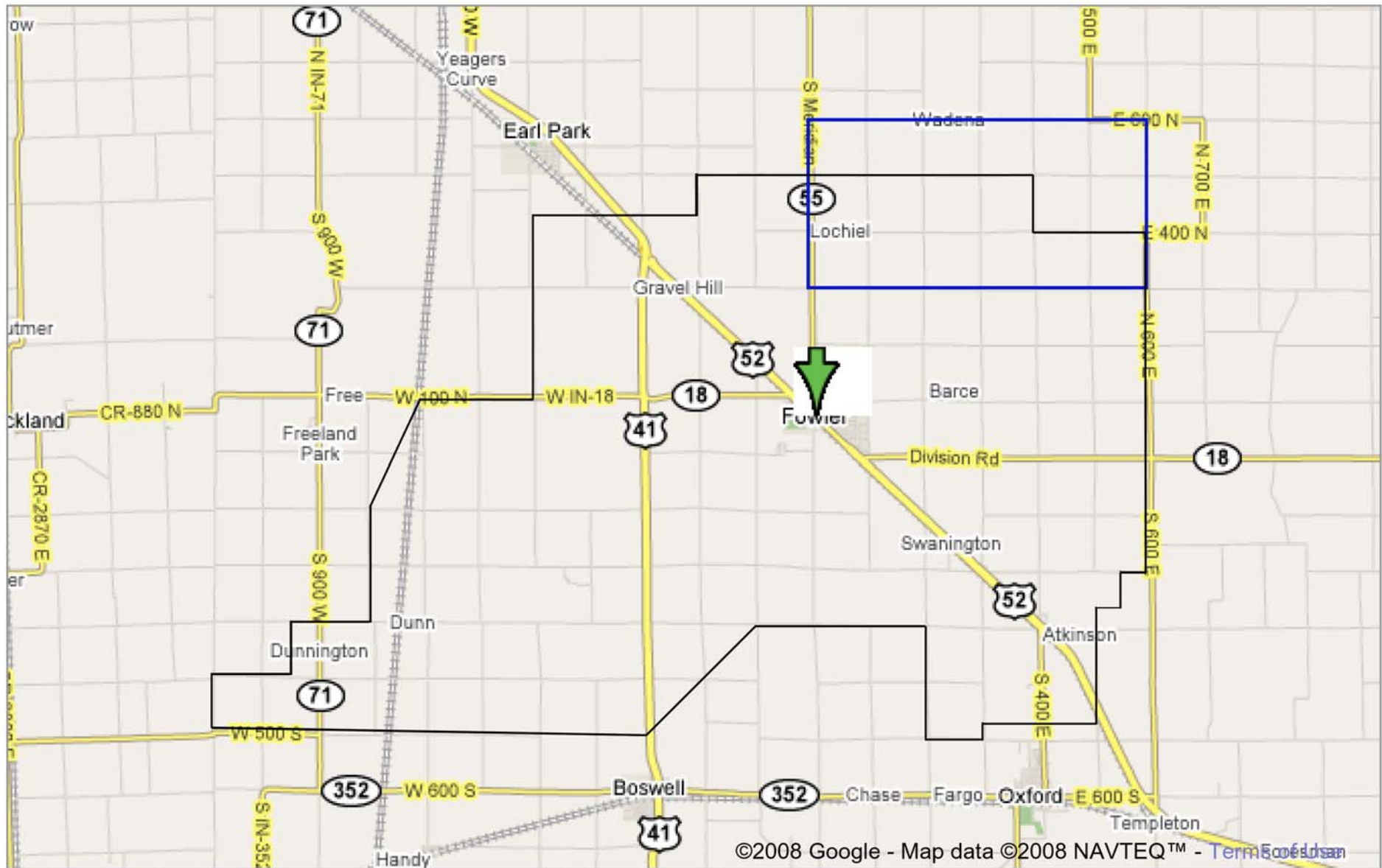
© 2008 Tele Atlas
Image IndianaMap Framework Data

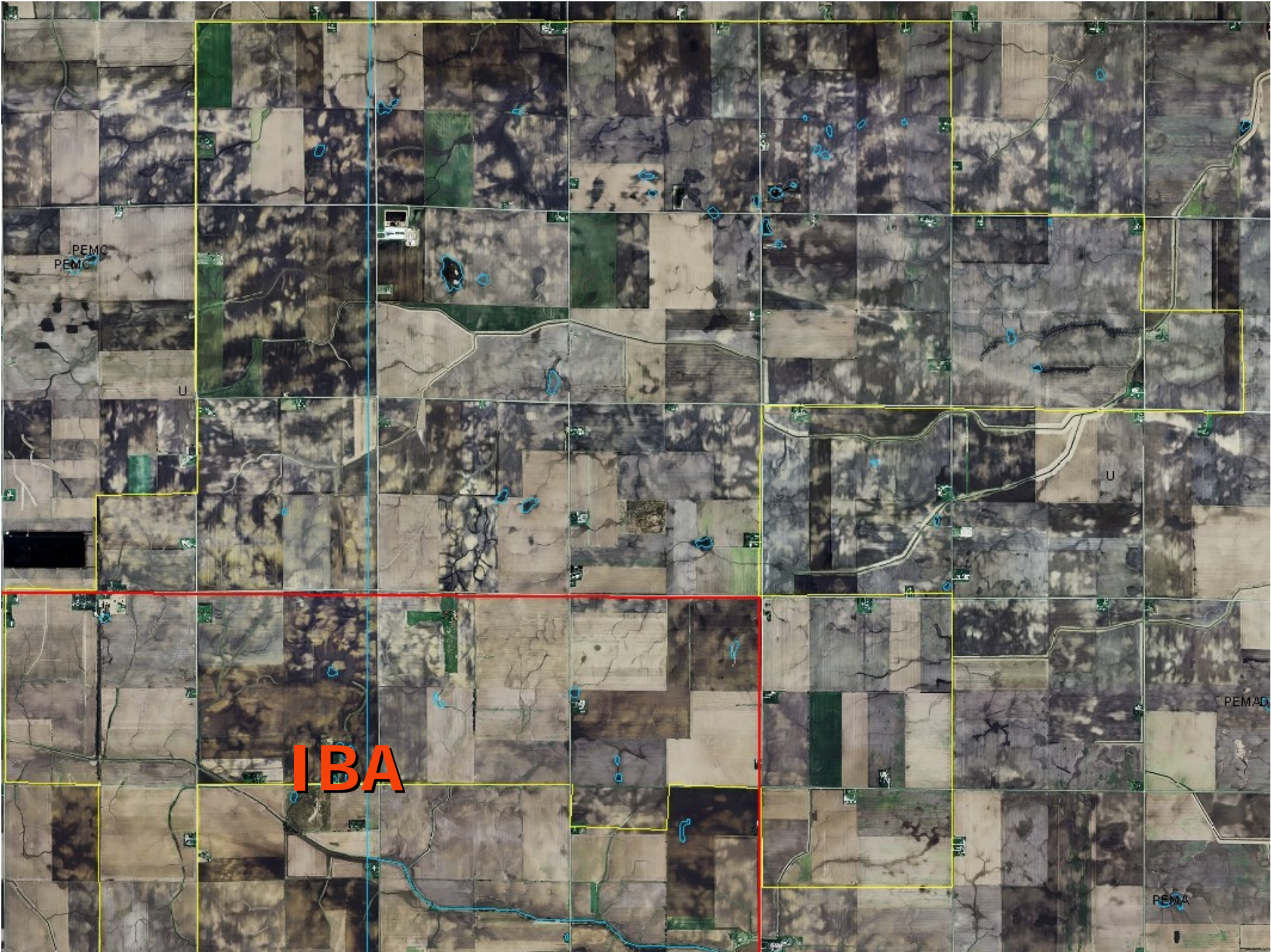


Pointer 40°39'32.73" N 87°13'36.73" W

Streaming ||||| 100%

Eye alt 19.47 mi





PEMC
PEMC

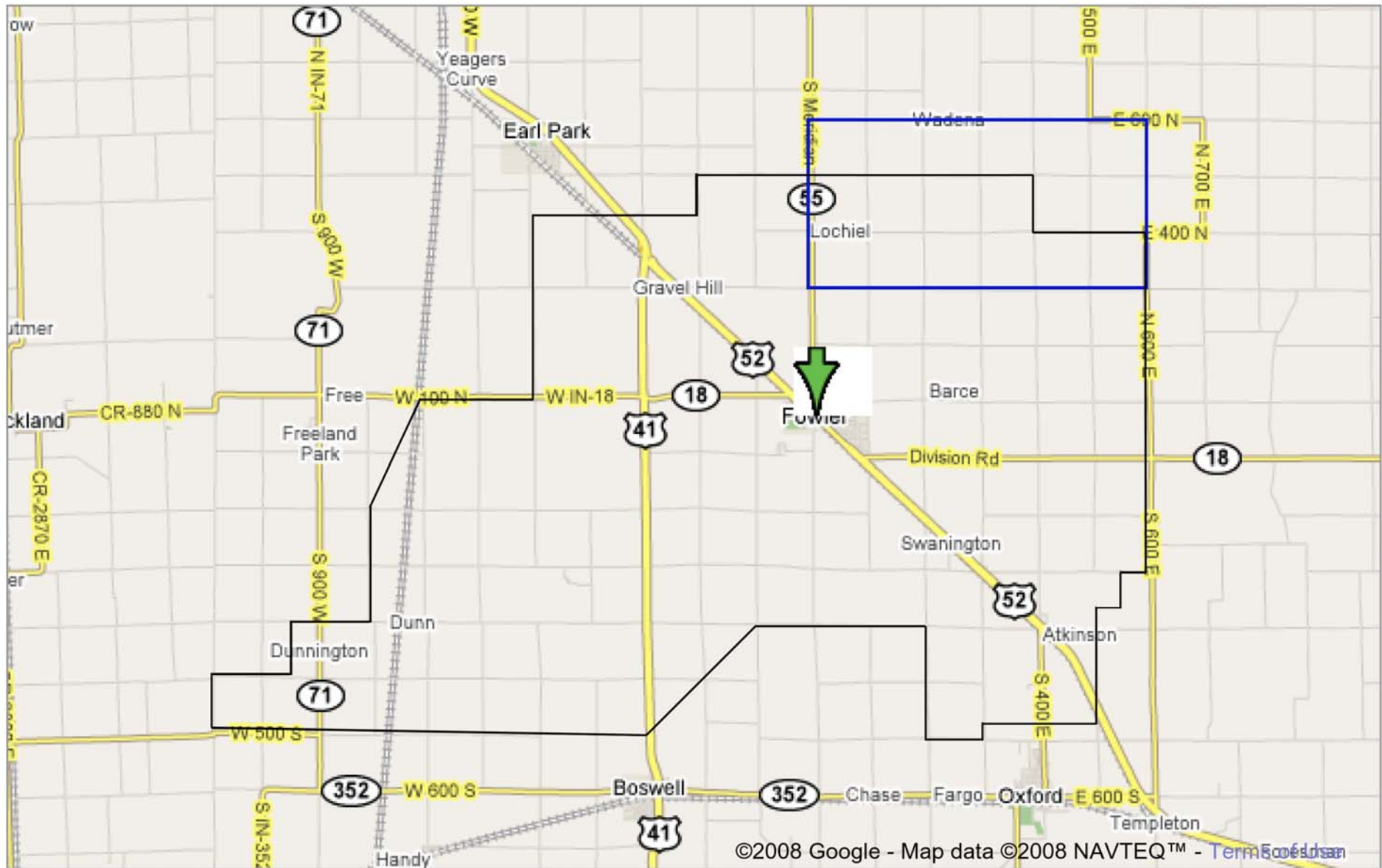
U

U

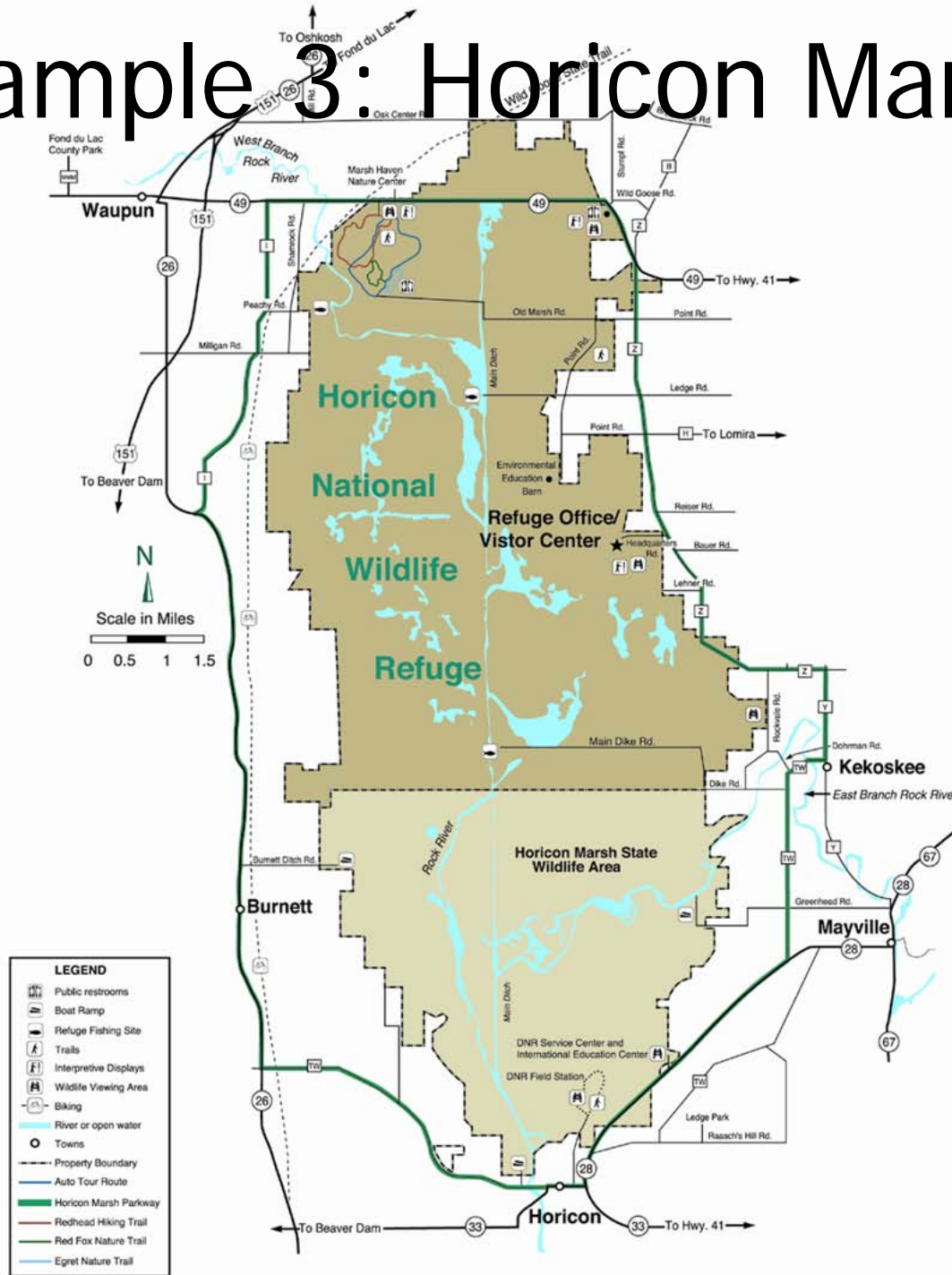
PEMA

PEMA

IBA



Example 3: Horicon Marsh



- 32,000 acres, largest cattail marsh in US
- Ramsar International Wetland and an IBA
- Estimated to be 12,000 years old
- Refuge for 67 years





04/17/2008





Neda Mine





Episodic Events



04/22/2008

- Dev
year
stud
- Mov

04/11/2008

How is it Working?


- Under the current system, the conscientious developer is penalized and the less scrupulous one is rewarded
- Thus, we have an uneven playing field
- The entire industry is put at risk by poorly sited wind facilities which have a high probability of causing major fatality events

Are Improved Guidelines the Answer?

- If the Guidelines aren't used, then improvements won't help
- Early consultation could save developers time and money
- With or without using Guidelines, Service and state agencies often have no means to prevent development near or on important resource areas

Are Improved Guidelines the Answer?

- Other than persuasion, the only tool the Service has is enforcement of the MBTA
 - That is *ex post facto* and does not address habitat losses
 - MBTA enforcement is a lose/lose situation
- Except for listed species, bats have no Federal protection



There Cannot be a Dawn of
Renewable Energy
if it Means the Sunset for Species
at Risk