

**State Water Resources Control Board
Groundwater Ambient Monitoring and Assessment (GAMA) Program
Priority Basin Assessment Project**

**South Coast Ranges (Coastal) Study Unit
Kick-Off Meeting**

Wednesday, April 30th, 2008
1:00-3:00 pm

Central Coast Water Authority
255 Industrial Way
Buellton, CA 93427

AGENDA

- Introductions; Meeting Overview
- Program Overview – *State Water Board*
- Basin Assessment Implementation – *USGS*
- Sharing of Existing Water Quality Information – *State Water Board with All*
- Wrap-up and Adjourn

Background: The main objectives of the GAMA Program are to improve statewide ambient groundwater quality monitoring and assessment and to increase the availability of information about groundwater quality to the public. Stewardship of the state's groundwater resources is the shared responsibility of all levels of the government and community. Participation in the GAMA Program is voluntary.

The South Coast Ranges, Coastal study unit includes the DWR defined groundwater basins of Santa Maria River Valley and Santa Ynez River Valley.

Directions:

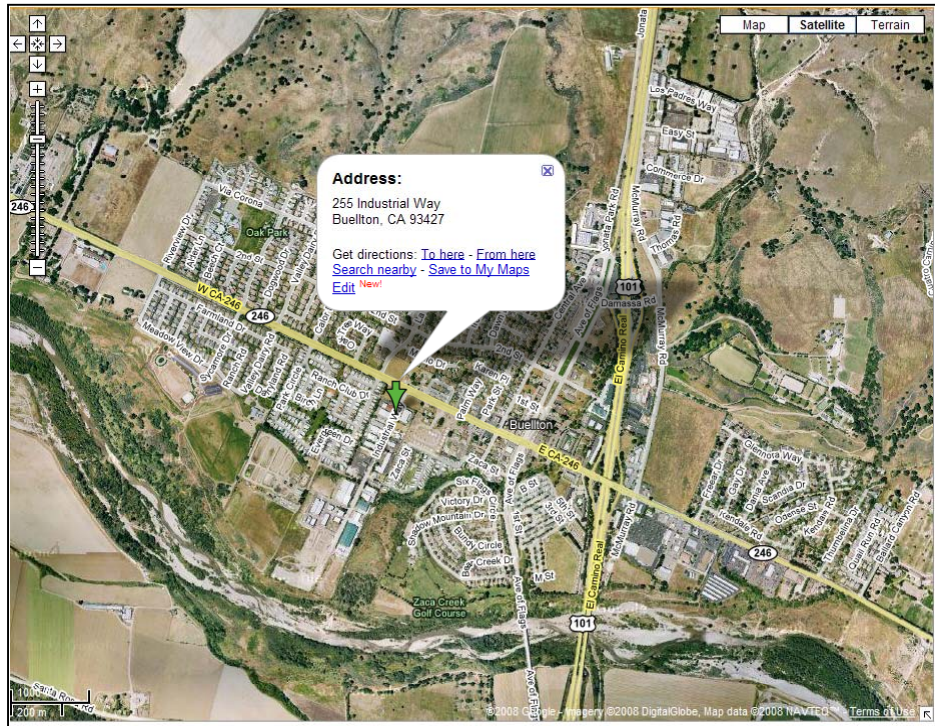
See next page for map.

Note:

Meeting date is subject to change. Please confirm your attendance with Julie Saturnio at 916 341-5860 or jsaturnio@waterboards.ca.gov. For more information, please visit www.waterboards.ca.gov/gama.



**Central Coast Water Authority
255 Industrial Way
Buellton, CA 93427**



<http://maps.google.com/maps?f=q&hl=en&geocode=&q=255+Industrial+Way,+Buellton,+CA+93427&sl=37.0625,-95.677068&ssp=49.223579,81.914062&ie=UTF8&ll=34.616257,-120.196052&spn=0.025182,0.039997&t=h&z=15&iwloc=addr>

Directions:

From Santa Maria

South on Hwy 101
Take exit 140A for CA-246 toward Lompoc/Solvang
Turn right onto Hwy 246
Turn left at Industrial Way

From Santa Barbara

North on Hwy 101
Take exit 140A for CA-246 toward Lompoc/Solvang
Turn left onto Hwy 246
Turn left at Industrial Way

