

# Upper Mississippi River National Wildlife & Fish Refuge

## Pool 4

### Access Points

- 1 Camp LaCupolis Resort
- 2 Chippewa River Landing
- 3 Read's Landing
- 4 Parkside Marina
- 5 Ike's Park Access
- 6 Slippery's
- 7 Indian Slough Landing
- 8 Pontoon Slough Landing
- 9 Beef Slough Landing
- 10 Wabasha Marina
- 11 Wilcox Landing
- 12 Buffalo River Landing
- 13 Alma Marina
- 14 Tank Pond Landing
- 15 Peterson Lake Landing
- 16 MN DNR Carry-in Access
- 17 Pioneer Landing



Nelson-Trevino Closed Area  
Closed to all migratory bird hunting.

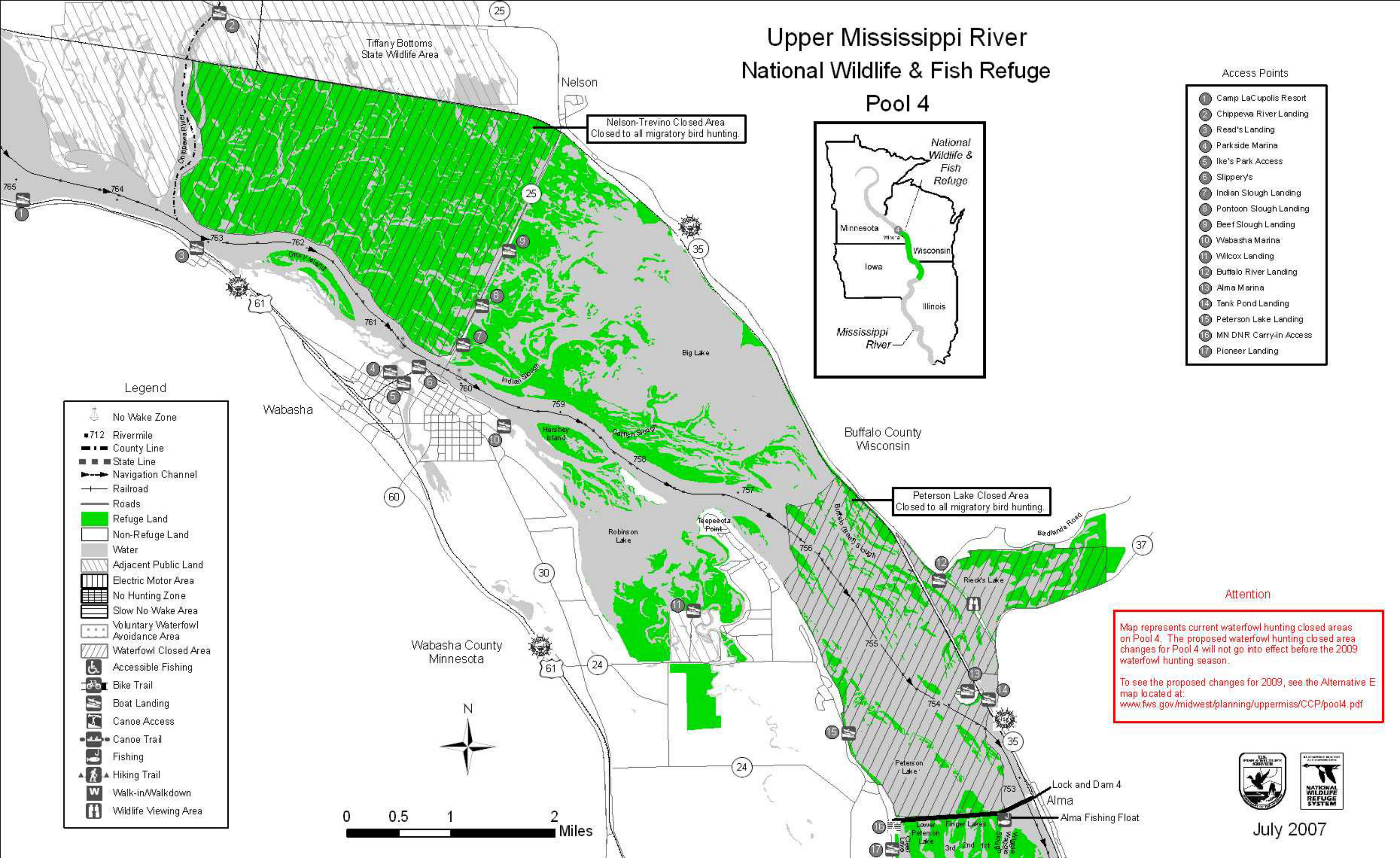
Peterson Lake Closed Area  
Closed to all migratory bird hunting.

### Attention

Map represents current waterfowl hunting closed areas on Pool 4. The proposed waterfowl hunting closed area changes for Pool 4 will not go into effect before the 2009 waterfowl hunting season.  
To see the proposed changes for 2009, see the Alternative E map located at:  
[www.fws.gov/midwest/planning/uppermiss/CCP/pool4.pdf](http://www.fws.gov/midwest/planning/uppermiss/CCP/pool4.pdf)

### Legend

- No Wake Zone
- 712 Rivermile
- County Line
- State Line
- Navigation Channel
- Railroad
- Roads
- Refuge Land
- Non-Refuge Land
- Water
- Adjacent Public Land
- Electric Motor Area
- No Hunting Zone
- Slow No Wake Area
- Voluntary Waterfowl Avoidance Area
- Waterfowl Closed Area
- Accessible Fishing
- Bike Trail
- Boat Landing
- Canoe Access
- Canoe Trail
- Fishing
- Hiking Trail
- Walk-in/Walkdown
- Wildlife Viewing Area



July 2007