

From: Joseph Kerski -  
Geographer, USGS, Denver

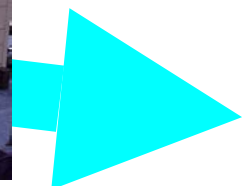
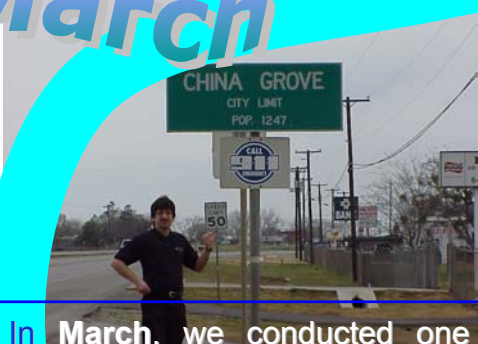
Folks: It has been a privilege working with you in 2002 in the USGS education and communications program. Our goal is to promote the awareness and use of USGS science and data throughout society. This newsletter chronologically highlights our 2002 activities. Our major educational partners throughout the year were the Colorado Geographic Alliance (COGA), ESRI, Sinte Gleska University, the National Council for Geographic Education (NCGE). I operated an exhibit at the GeoTech conference in Dallas, and created a series of GIS-based lessons focusing on the Titanic, (above right). It's a team effort!

In **January**, I worked on a temporal GIS project in Golden, Colorado and conducted a presentation to Colorado fly fishers association. I was elected to a 2-year term on the Executive Board of the National Council for Geographic Education (NCGE). I operated an exhibit at the GeoTech conference in Dallas, and created a series of GIS-based lessons focusing on the Titanic, (above right).



In **February**, I served as part-time instructor in an online GIS course at the University of Montana. We also worked with the Colorado State Library and with Jean Parcher (above) and Bill Flynn at the Texas GIS conference to operate an exhibit and conduct presentations.

In **March**, we conducted one of a series of NCGE-ESRI GIS institutes in Aurora, Colorado, operated an exhibit and conducted workshops at the Association for Supervision and Curriculum Development conference in San Antonio (including a pilgrimage to **China Grove**, above) and the Association of American Geographers conference in Los Angeles, and participated in the Science Olympiad.



# April

In **April**, we operated a USGS exhibit at the Geographical Association conference in Manchester, England, and conducted a GIS workshop at the University of Leeds, England. We co-sponsored a GeoTech Colorado conference in Monument with the Colorado Geographic Alliance. A book that we had the privilege of helping to edit was published by ESRI Press, called **Mapping Our World—GIS Lessons for Educators**.



Pilgrimage to The Prime Meridian!



# May

In **May**, we worked on integrating GIS and math in Missouri, planned FY03 education activities in Louisiana, helped teach a GIS For Managers course in Colorado, and conducted a GIS workshop during the C&R state liaison conference.

# June

In **June**, I conducted workshops with the Rosebud Sioux tribe in South Dakota with James Rattling Leaf, for tribal environmental, water resource, cultural resource, biologists, and other tribal professionals.



Please fill out the following information with answers to the questions below:

Name: \_\_\_\_\_  
 Address: \_\_\_\_\_  
 City: \_\_\_\_\_  
 State & Zip: \_\_\_\_\_  
 Telephone: \_\_\_\_\_  
 Email: \_\_\_\_\_  
 School: \_\_\_\_\_  
 Address: \_\_\_\_\_  
 City: \_\_\_\_\_  
 State/Zip: \_\_\_\_\_  
 Grade(s) you teach: \_\_\_\_\_  
 Subject(s) you teach: \_\_\_\_\_

Please attach a separate sheet with:



**GEOGRAPHIC INFORMATION SYSTEMS (GIS) INSTITUTE FOR EDUCATORS**  
 24-28 June 2002

**SPONSORED BY**  
 Colorado Geographic Alliance  
 and GIS ETC

Use GIS to explore the interactions of the natural, cultural, and physical environment. Apply maps, charts, aerial photography, databases, and images to analyze trends and patterns.

In **June**, I also conducted workshops for geography teachers through COGA, for the Front Range biodiversity project, and we co-sponsored an international GIS institute for one week in May in Boulder. This attracted 32 educators from 15 states and 3 countries.



# July

July saw us helping with our USGS exhibits at the ESRI Education and the ESRI User Conferences in California (right) and at the National Council for State Legislatures in Colorado. We also completed a major revision to each of our education web pages at the USGS Rocky Mountain Mapping Center.



ESRI President Jack Dangermond, Above Center.



# August



In August, I participated in an NCAR climate GIS workshop, went back to the Rosebud Sioux to conduct another workshop (below left), conducted a GIS workshop at a National Park Service Lands conference (left), and assisted with an exhibit at the USGS Fort Collins Science Center open house (below).



# September

In September, we hosted a USGS exhibit at the Jefferson County Public Library (above right) and Bob Gray and I conducted a multinational, multidisciplinary workshop in GIS at the University of Texas-El Paso campus (right).



During September and throughout the year, we also answered hundreds of technical questions for data users. We began a research project on geography education standards in Colorado.

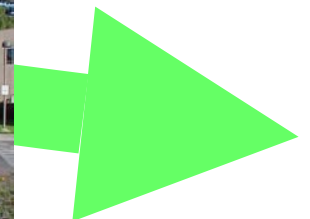
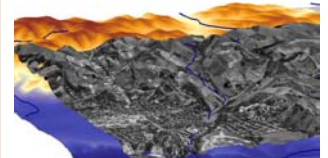
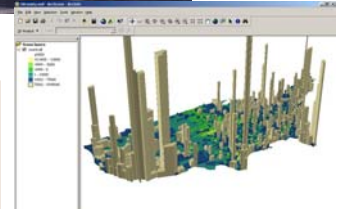


# October

We rang in the new fiscal year in October with a workshop for geography educators at the University of Arizona (right) and a series of workshops and an exhibit at the GIS In the Rockies conference (below).



During October, we also hosted an exhibit and workshops at the National Council for Geographic Education conference in Philadelphia, worked with the School of Education at the University of Colorado, and conducted an ArcGIS course in Menlo Park, California.



# November

In **November**, we conducted a GIS workshop with our partners at Sinte Gleska University and ESRI, and operated an exhibit at the National Indian Education Conference in New Mexico (above right).

During this period, I taught two ArcGIS classes at the USGS in Denver, and continued my participation in the NSF-sponsored online GIS courses for educators. We co-sponsored (with COGA and ESRI) a GIS evaluation and training session at ESRI in Broomfield, Colorado.

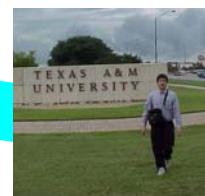
We hosted many tours throughout the year for such groups as the Pecora Remote Sensing, the Geological Society of America, GITA, Geography Awareness Week, and GIS Day (right).



# December



We worked with the Branch of Information Services and with the Central Region Office of Communications to conduct workshops and exhibits at conferences of the National Association of Interpretation (left, in Virginia) and the Colorado Science Teachers Association (below). We had front page media coverage in the local newspaper about a GIS keynote presentation we gave at Front Range Community College in **December**.



I look forward to working with you in 2003!--Joseph Kerski