

PUMICE AND PUMICITE END-USE STATISTICS¹
U.S. GEOLOGICAL SURVEY
 [Metric tons]

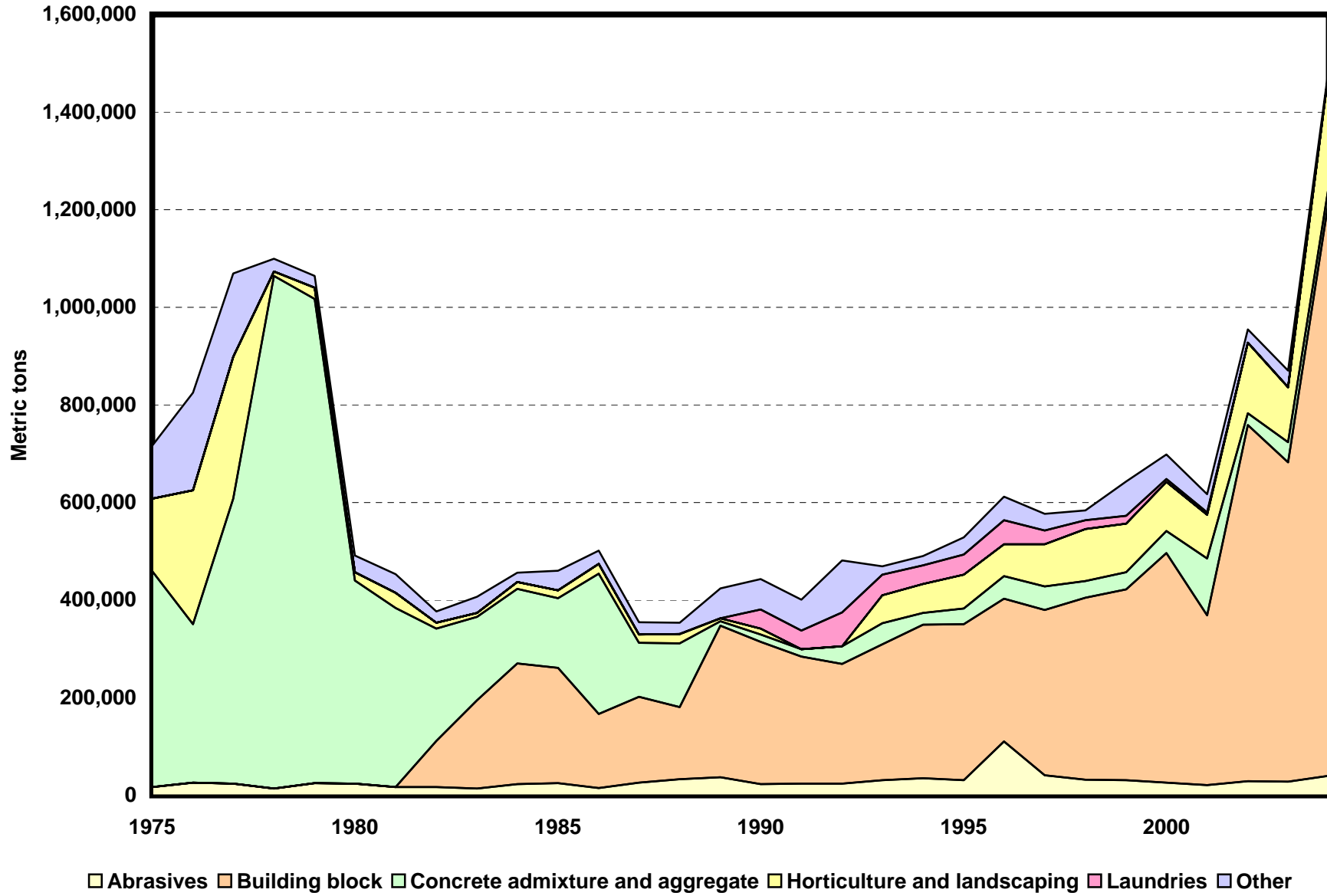
Last modification: September 15, 2005

Year	Abrasives	Building block	Concrete admixture and aggregate	Horticulture and landscaping	Laundries	Other	Undistributed	Apparent consumption
1975	17,000		442,000	149,000		109,000	130,000	847,000
1976	26,000		325,000	274,000		200,000	70,000	895,000
1977	24,000		584,000	290,000		171,000	231,000	1,300,000
1978	14,000		1,050,000	9,000		27,000	194,000	1,290,000
1979	25,000		992,000	23,000		24,000	56,000	1,120,000
1980	24,000		416,000	17,000		34,000	175,000	668,000
1981	17,000		367,000	31,000		38,000	82,000	535,000
1982	17,000	95,000	230,000	12,000		23,000	109,000	486,000
1983	14,000	181,000	171,000	8,000		33,000	166,000	573,000
1984	23,000	247,000	153,000	14,000		19,000	265,000	720,000
1985	25,000	236,000	143,000	16,000		40,000	219,000	680,000
1986	15,000	152,000	287,000	20,000		28,000	348,000	851,000
1987	26,000	176,000	111,000	17,000		25,000	246,000	602,000
1988	33,000	148,000	131,000	19,000		23,000	305,000	658,000
1989	37,000	311,000	9,000	6,000		61,000	286,000	710,000
1990	23,000	292,000	15,000	12,000	39,000	62,000	260,000	703,000
1991	24,000	260,000	16,000	W	38,000	63,000	105,000	506,000
1992	24,000	245,000	37,000	W	69,000	106,000	246,000	727,000
1993	31,000	279,000	43,000	57,000	42,000	17,000	125,000	594,000
1994	35,000	315,000	24,000	59,000	38,000	19,000	125,000	615,000
1995	31,000	320,000	32,000	69,000	41,000	36,000	199,000	728,000
1996	111,000	292,000	46,000	66,000	49,000	48,000	202,000	814,000
1997	41,000	339,000	48,000	87,000	28,000	34,000	253,000	830,000
1998	32,000	373,000	34,000	107,000	18,000	20,000	556,000	1,140,000
1999	31,000	391,000	35,000	100,000	16,000	70,000	687,000	1,330,000
2000	26,000	470,000	46,000	100,000	6,000	50,000	712,000	1,410,000
2001	21,000	348,000	116,000	90,000	5,000	37,000	653,000	1,270,000
2002	29,000	730,000	24,000	145,000		27,000	365,000	1,320,000
2003	28,000	654,000	42,000	112,000		34,000	340,000	1,210,000
2004	40,000	1,180,000	29,000	236,000		6,000	-41,000	1,450,000

W Withheld to avoid disclosing company proprietary data; data included with the other uses category.

¹Compiled by G.R. Matos and A. Founie.

End Uses of Pumice and Pumicite



Pumice and Pumicite End-Use Worksheet Notes

Data Sources

The sources of data for the pumice and pumicite end-use worksheet are the Minerals Yearbook, an annual collection, compilation, and analysis of mineral industry data, published by the U.S. Bureau of Mines and the U.S. Geological Survey, and the Mineral Commodity Summaries, published by the U.S. Geological Survey.

End Use

End use is defined as the use of the mineral commodity in a particular industrial sector or product. Pumice and pumicite end uses are based on sold or used by producers. For pumice and pumicite, end-use categories are abrasives, building block (includes decorative), concrete admixture and aggregate, horticulture and landscaping, laundries, and other industrial uses. The undistributed category is the difference between apparent consumption and total sold or used by producers. It reflects trade data, stocks, and data not reported by end use.

The abrasives category includes cleaning and scouring. The other uses category includes absorbent, diluents, fill, filter aids, pottery, and, after 1977, road construction materials. After the year 2001, it includes laundries and other unspecified uses.

Blank cells in the spreadsheet indicate that data were not available. W indicates information withheld to avoid disclosing company proprietary data; withheld data are included in the other uses category. Data are rounded to no more than three significant digits; data may not add to totals shown.

References

U.S. Bureau of Mines, 1977–96, Minerals Yearbook, v. I, 1975–94.

U.S. Geological Survey, 1997–2005, Minerals Yearbook, v. I, 1995–2003.

U.S. Geological Survey, 2005, Mineral Commodity Summaries, 2005.

Recommended Citation Format:

(1) If taken from CD version:

U.S. Geological Survey, [year of last update, e.g., 2005], [Mineral commodity, e.g., Gold] statistics, *in* Kelly, T.D., and Matos, G.R., comps., Historical statistics for mineral and material commodities in the United States: U.S. Geological Survey Data Series 140, one CD-ROM. (Also available online at <http://pubs.usgs.gov/ds/2005/140/>.)

(2) If taken from online version:

U.S. Geological Survey, [year of last update, e.g., 2005], [Mineral commodity, e.g., Gold] statistics, *in* Kelly, T.D., and Matos, G.R., comps., Historical statistics for mineral and material commodities in the United States: U.S. Geological Survey Data Series 140, available online at <http://pubs.usgs.gov/ds/2005/140/>. (Accessed [date].)

For more information, please contact:

[USGS Pumice and Pumicite Commodity Specialist](#)