

# USGS EROS Data Center



# USGS EROS Data Center Mission Statement

- To promote new uses, new users, and new understanding of land information, so that others can better understand our planet
- To ensure scientists, researchers, businesses, decision makers, and the public have ready access to the land information they need
- To safeguard and expand the world's largest civilian archive of remotely sensed land data

# USGS EROS Data Center History

- A National Center of the U.S. Geological Survey
- 16 miles NE of Sioux Falls, South Dakota
- \$63M FY 03 budget
- 80 civil servants
- 475 technical support services contract personnel (SAIC Prime)
- 12 supporting contractual relationships
- Key events in EROS history:
  - 1966 - EROS Program established within the USGS
  - 1971 - EDC established in downtown Sioux Falls
  - 1973 - Moved to current location
  - 1996 - Facility expansion completed
  - 1998 - Celebrated 25th anniversary
  - 2001 - USGS assumes responsibility for Landsat spacecraft operations

# USGS EROS Data Center

## Key USGS Programs

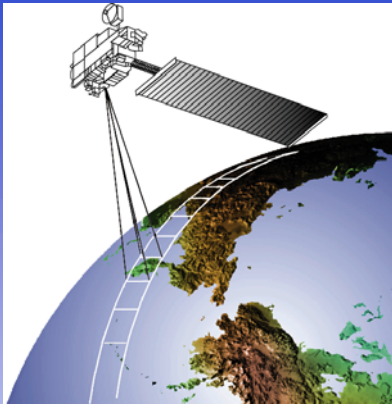
- Land Remote Sensing (LRS) Program – remote sensing data acquisition, archiving, and product distribution
- Geographic Analysis and Monitoring (GAM) Program – applications research and development
- Cooperative Topographic Mapping (CTM) Program – compilation, maintenance, and access to *The National Map*

# USGS EROS Data Center Responsibilities

- National Satellite Land Remote Sensing Data Archive
- Land Processes Distributed Active Archive Center
- Landsat Mission Management and Operations Responsibility
- World Data Center-A for Remotely Sensed Land Data
- World Data Center-A for Land Cover Data
- USGS *National Map* Data Services
- United Nations Environment Programme / Global Resource Information Data Base-North American Node
- Land Remote Sensing Technology/Applications R&D Activity

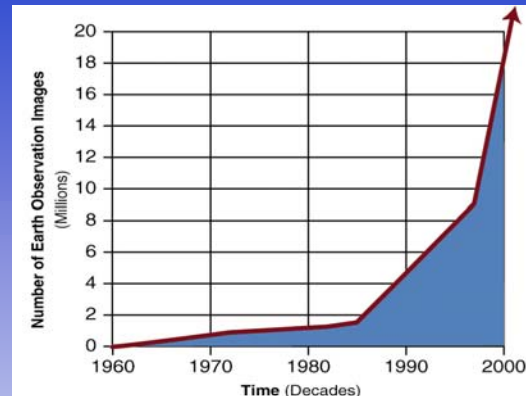
# Land Remote Sensing Acquisition to Applications

## Earth Observation Satellites



- Declassified Systems
- Landsat 1-5
- NOAA - POES
- Shuttle Radar
- Landsat 7 (1999)
- NASA-EOS (1999)
- High Resolution Systems

## USGS National Archive Challenge



- Hold in Trust
- Provide Access
- Process
- Reproduce
- Distribute

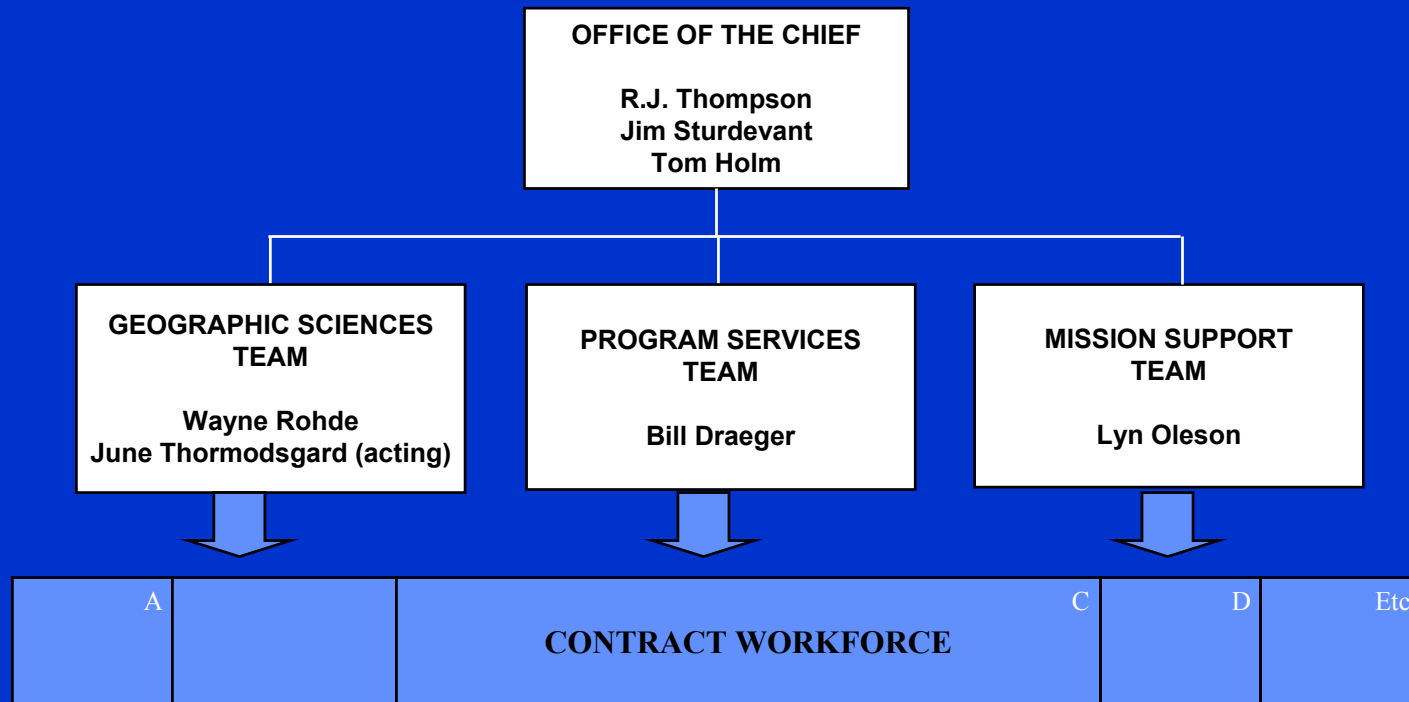
## Data Applications



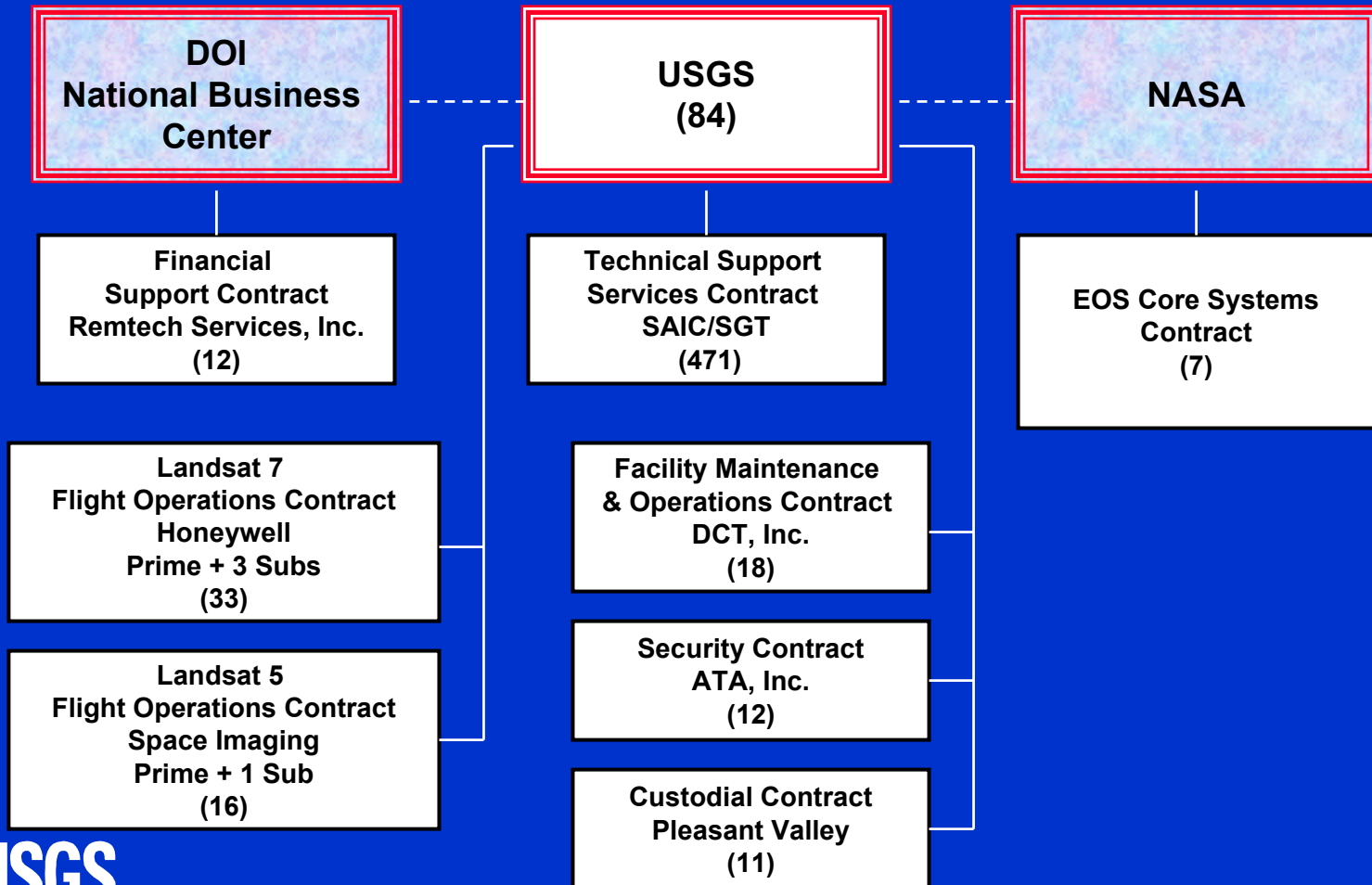
- Land Cover
- Fire Danger Rating
- DOI Land Management
- Natural Hazards
- Coastal Zones
- Environmental Monitoring
- Emergency Response

***Expanding to over 18 million images of the earth!***

# USGS EROS Data Center Organization



# Major Workforce Elements





# Distribution of Workforce

## Government Staff

- Greenbelt (2)
- Menlo Park
- Washington, D.C.
- Oregon

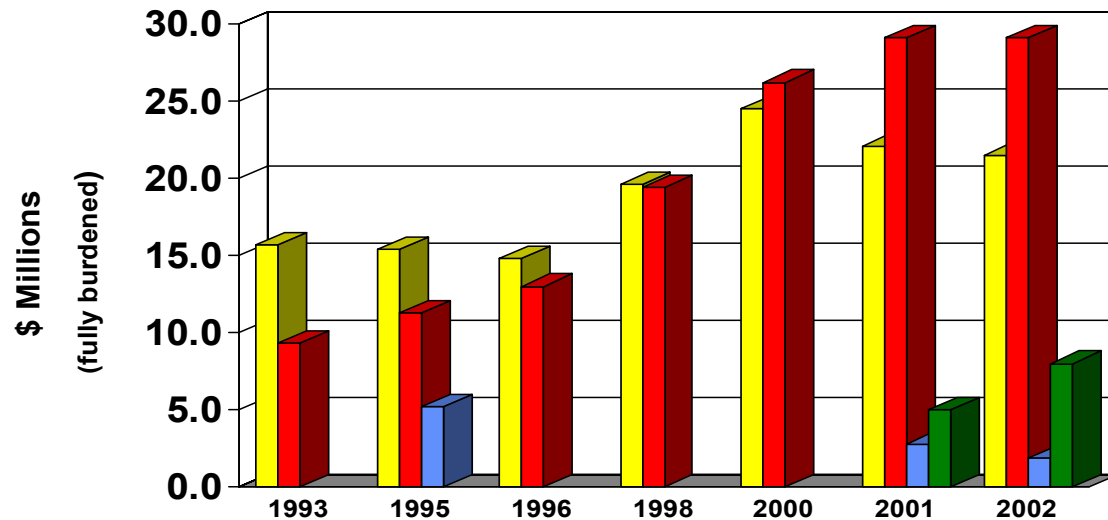
## Contract Staff

- Greenbelt, MD
- Los Angeles, CA
- Santa Barbara, CA
- Rapid City, SD
- Whitefish, MT
- Anchorage, AK
- Honduras
- Venezuela

## Staffed via Subcontracts

- Dominican Republic
- Peru
- Mozambique
- Kenya
- Niger
- Senegal
- Brookings, SD
- Sykesville, MD
- Santa Barbara, CA
- Lanham, MD

# EROS Data Center Funding Profile: FY 1993-02



■ Appropriations	15.7	15.4	14.8	19.6	24.5	22.1	21.5
■ Reimbursable	9.3	11.3	13.0	19.4	26.2	29.1	29.1
■ Facilities		5.2				2.8	1.9
■ Satellite Missions						5.0	8.0
<b>TOTAL</b>	<b>25.0</b>	<b>31.9</b>	<b>27.8</b>	<b>39.0</b>	<b>50.7</b>	<b>59.0</b>	<b>60.5</b>