

# LP DAAC User Characterization

03Feb2003

Roger Oleson

LP DAAC User Services Task Lead

(605) 594-2807

Olesonr@usgs.gov

# User Characterization

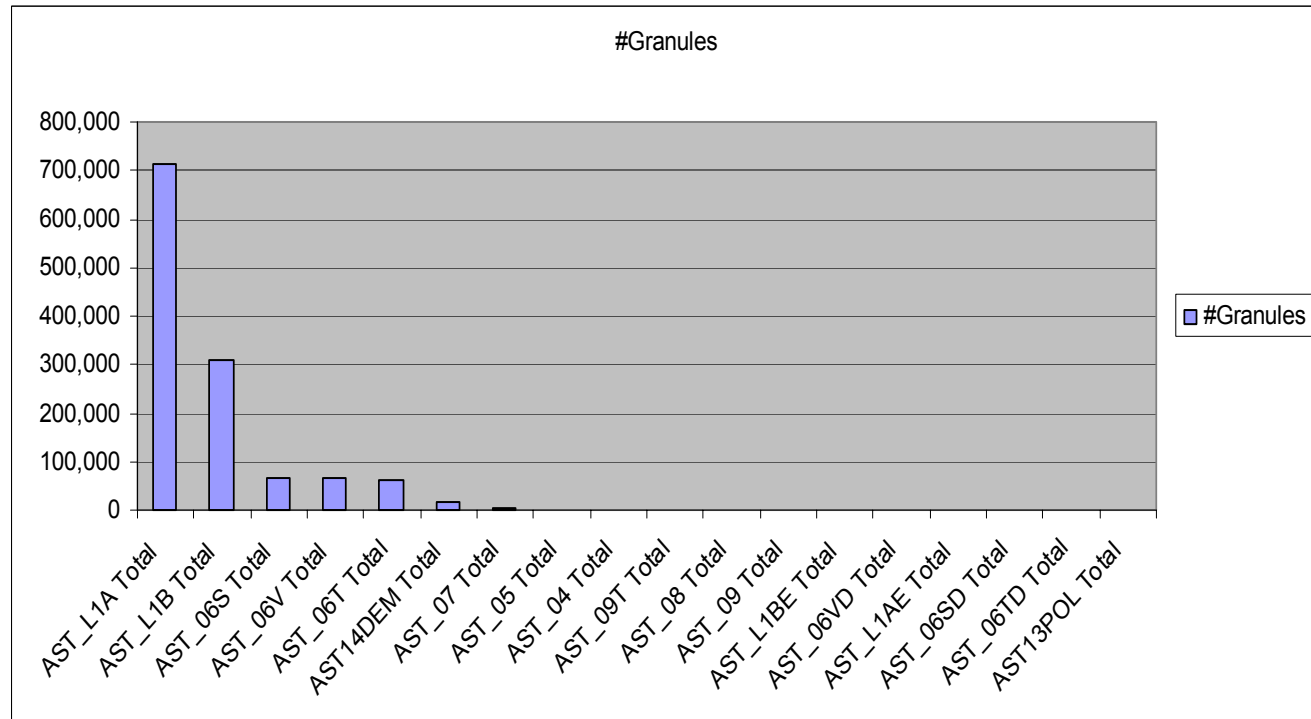
---

- **First Bullet**
  - ◆ **Second Bullet**
    - **Third Bullet**
      - ◆ **Fourth Bullet**
        - **Fifth Bullet**

# User Characterization

## ● ASTER FY02 Distribution by Products

Datatype	#Granules
AST_L1A	714,006
AST_L1B	310,580
AST_06S	68,002
AST_06V	66,987
AST_06T	62,688
AST14DEM	16,686
AST_07	3,052
AST_05	1447
AST_04	963
AST_09T	902
AST_08	858
AST_09	563
AST_L1BE	431
AST_06VD	351
AST_L1AE	100
AST_06SD	56
AST_06TD	55
AST13POL	36



# User Characterization

- MODIS Distribution by Products

- ◆ FY02

Datatype	#Granules
MOD15A2	117,652
MOD09A1	51,680
MOD17A2	44,661
MOD09GHK	33,892
MOD43B3	33,403
MOD11A2	27,892
MOD11B1	25995
MOD13A2	20,387
MOD13A1	15,020
MOD09GST	13,962
MOD11A1	13,585
MOD09GQK	12,253
MOD12Q1	10586
MOD43B1	10,318
MODMGGAD	9,757
MOD14A1	8,912
MOD14A2	7,694
MOD11_L2	7,183
MOD13Q1	6,701
MOD43B4	3,763
MOD09Q1	3187
MOD14GD	2,515
MOD14	2154
MODPTHKM	1973
MODPTQKM	1385
MOD14GN	1297
MOD07_L2	601
MODPT1KD	430
MOD43C1	144
MOD43C2	101
MODMGGAN	7
MODPT1KN	6



# User Characterization

- MODIS Distribution by Products

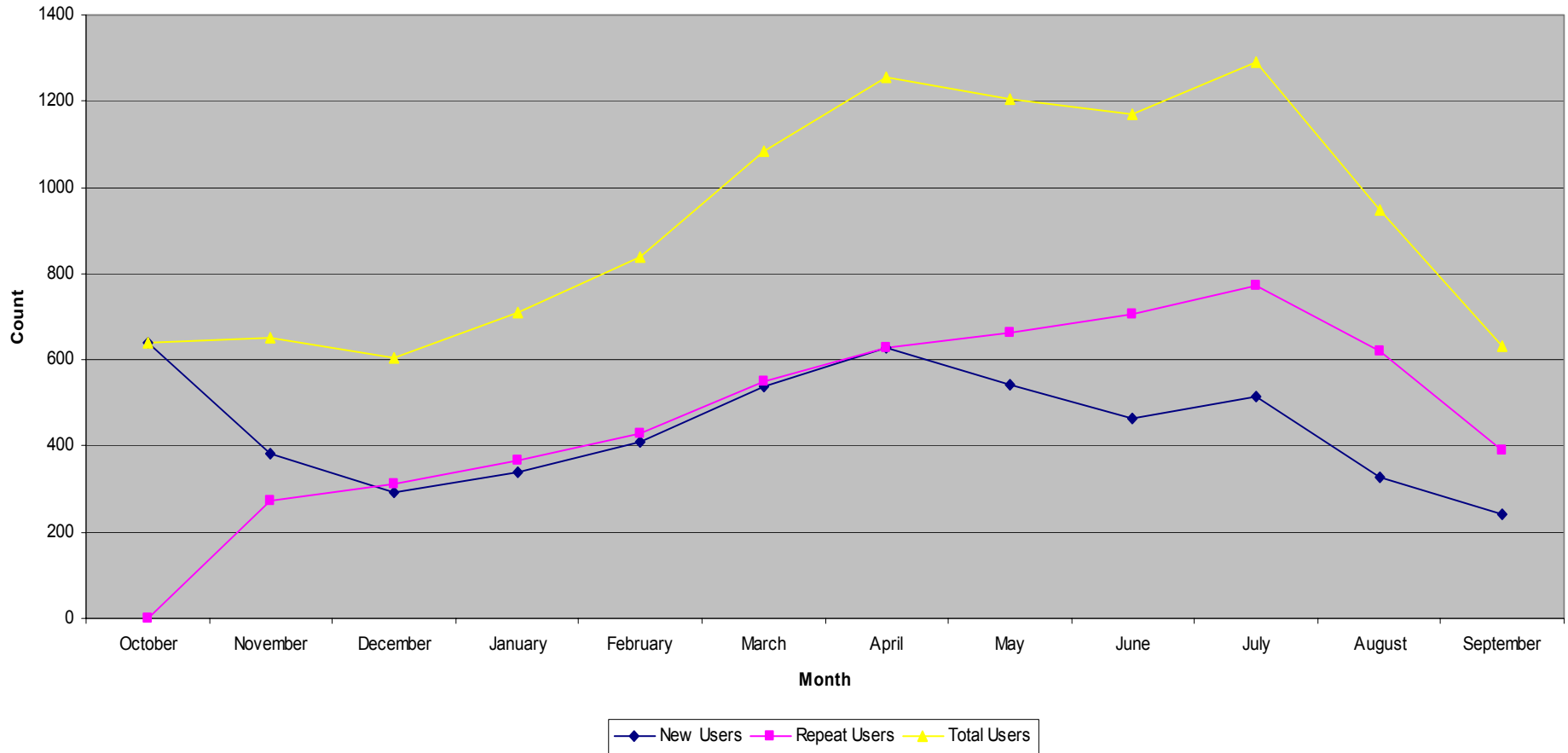
- ◆ FY02

Instrument/Datatype	#Granules
MOD09A1.001	14,735
MOD15A2.001	5168
MOD11_L2.001	2,965
MOD13A1.001	2,575
MOD09GST.001	1671
MOD12Q1.001	1289
MOD09GHK.001	1168
MOD13A2.001	985
MOD11A2.001	907
MOD11A1.001	710
MOD17A2.001	640
MOD43B3.001	496
MOD14A2.001	261
MOD14.001	233
MOD43B1.001	204
MOD43B4.001	152
MOD14GD.001	141
MOD14A1.001	26
MODMGGAD.001	10
MODPTHKM.001	7
MODPT1KD.001	5
MODMGGAN.001	4
MOD14GN.001	3
MODPT1KN.001	1

Instrument/Datatype	#Granules
MOD15A2.003	112,484
MOD17A2.003	44,021
MOD09A1.003	36,945
MOD43B3.003	32,907
MOD09GHK.003	32,724
MOD11A2.003	26,985
MOD11B1.003	25995
MOD13A2.003	19,402
MOD11A1.003	12,875
MOD13A1.003	12,445
MOD09GST.003	12,291
MOD09GQK.003	12,253
MOD43B1.003	10,114
MODMGGAD.003	9,747
MOD12Q1.003	9297
MOD14A1.003	8,886
MOD14A2.003	7,433
MOD13Q1.003	6,701
MOD11_L2.003	4,218
MOD43B4.003	3,611
MOD09Q1.003	3187
MOD14GD.003	2,374
MODPTHKM.003	1966
MOD14.003	1921
MODPTQKM.003	1385
MOD14GN.003	1294
MOD07_L2.003	601
MODPT1KD.003	324
MOD43C1.003	144
MOD43C2.003	101
MODPT1KN.003	5
MODMGGAN.003	3

# User Characterization

ECS Users FY2002

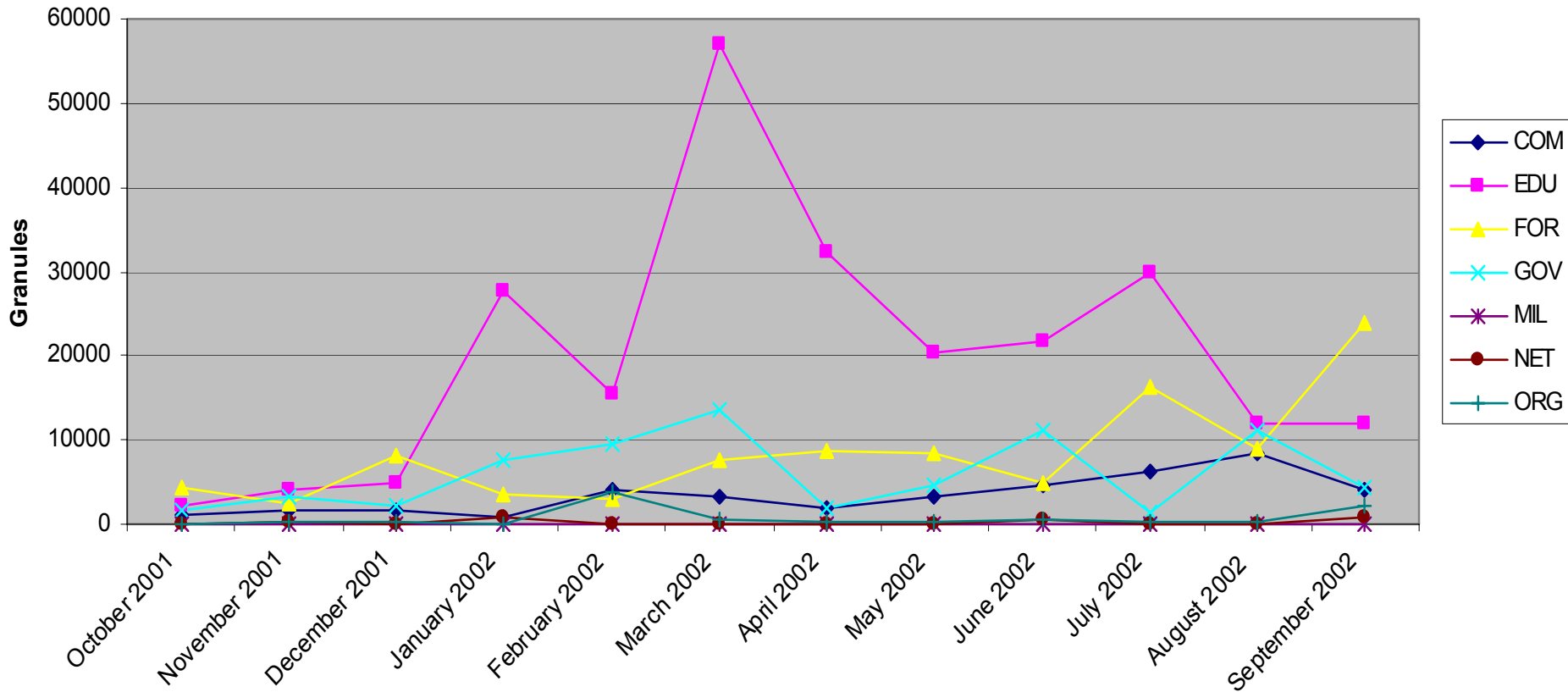


Land Processes DAAC  
Science Advisory Panel Meeting  
February 3-5, 2003



# User Characterization

MODIS FY02 Distribution

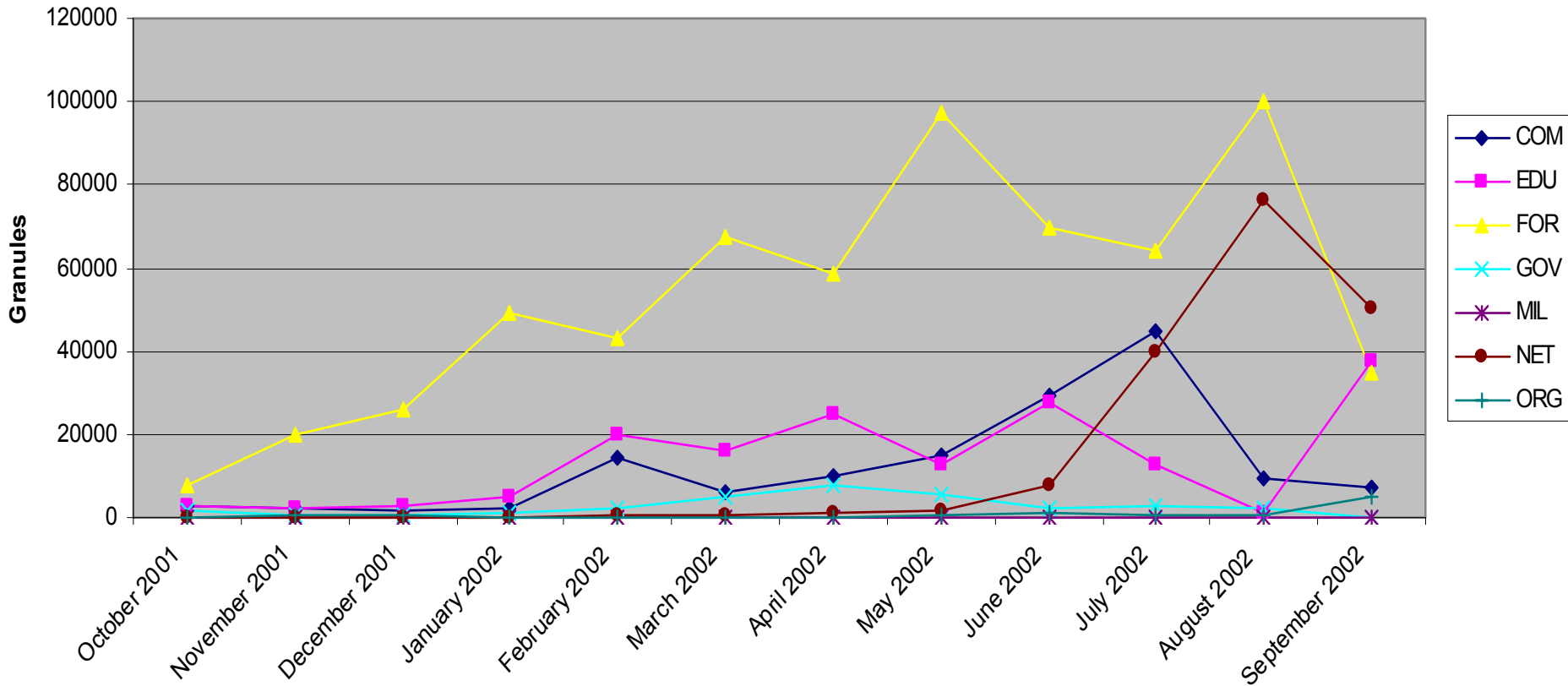


Land Processes DAAC  
Science Advisory Panel Meeting  
February 3-5, 2003



# User Characterization

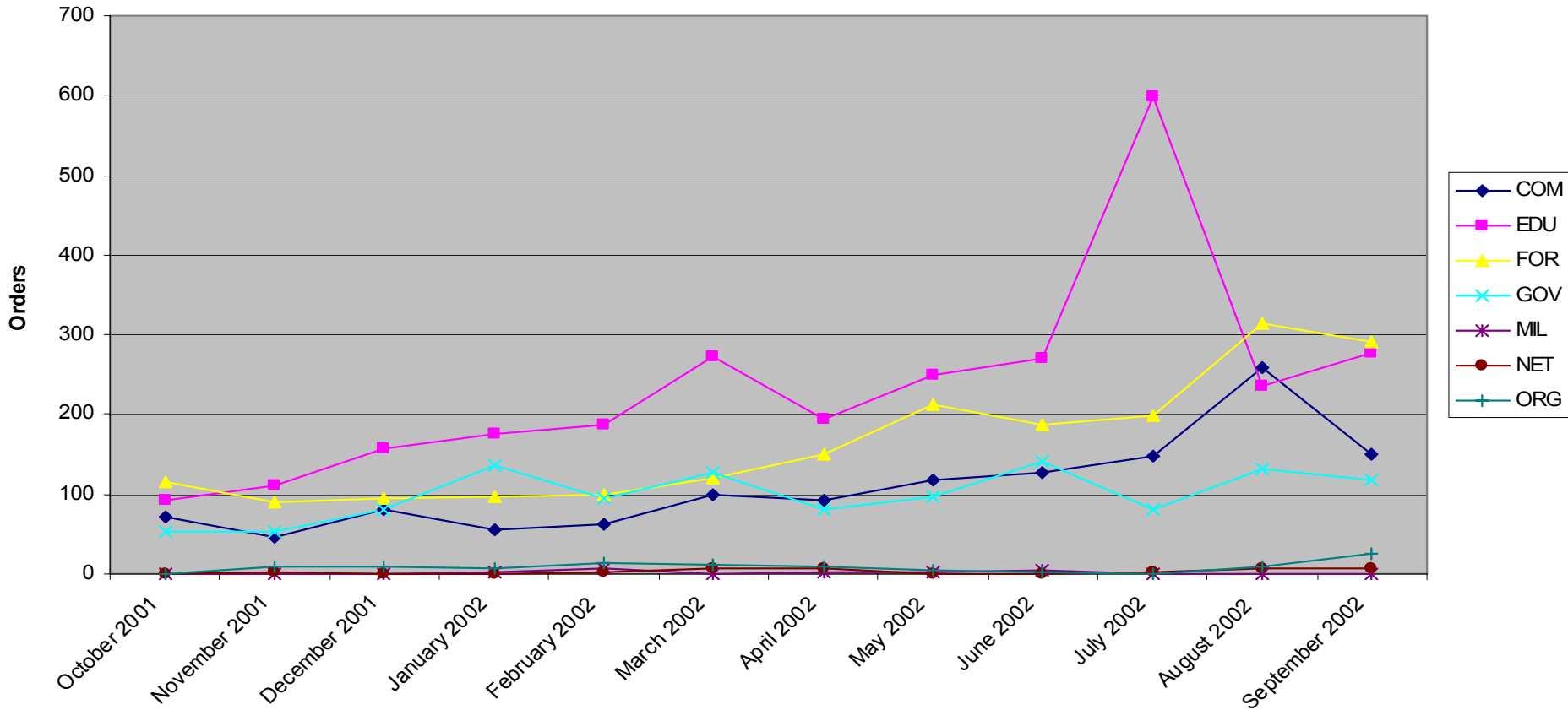
ASTER FY02 Distribution





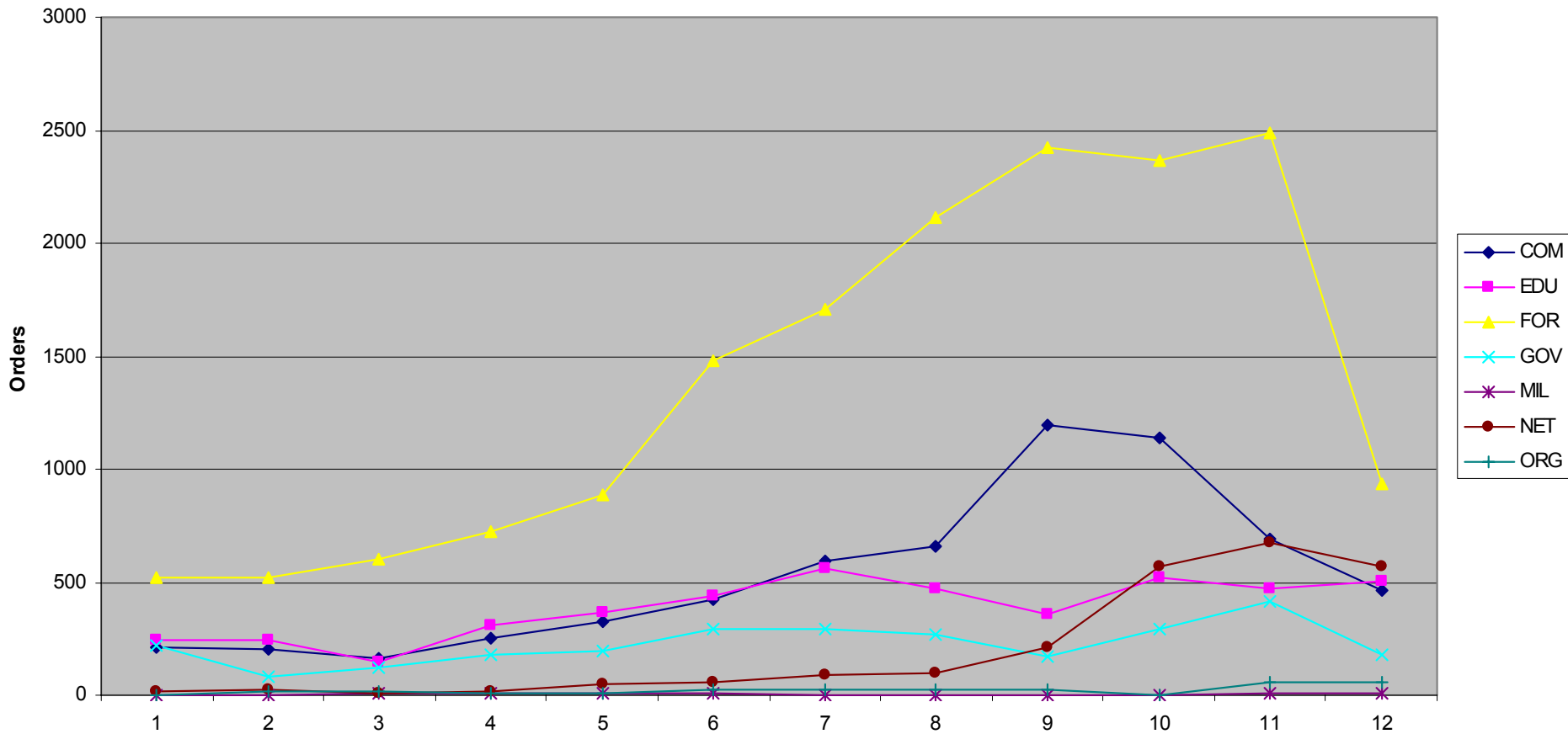
# User Characterization

MODIS Orders FY02



# User Characterization

ASTER Orders FY02



Land Processes DAAC  
Science Advisory Panel Meeting  
February 3-5, 2003



# User Characterization

- **Top 5 MODIS Users FY02**

- ◆ Educational Domain
- ◆ Granules Distributed

October		November		December		January		February		March	
bu.edu	825	ntsg.umt.edu	1200	ntsg.umt.edu	1294	crsa.bu.edu	19086	ntsg.umt.edu	6528	ntsg.umt.edu	23178
glue.umd.edu	477	bu.edu	734	bu.edu	949	icess.ucsb.edu	3365	eas.gatech.edu	4346	bu.edu	20438
icess.ucsb.edu	427	icess.ucsb.edu	717	glue.umd.edu	836	ntsg.umt.edu	3016	glue.umd.edu	2649	essic.umd.edu	5173
ntsg.umt.edu	150	bren.ucsb.edu	292	crsa.bu.edu	612	glue.umd.edu	1872	crsa.bu.edu	575	eas.gatech.edu	2861
breeze.eas.gatech.edu	131	glue.umd.edu	230	essic.umd.edu	384	essic.umd.edu	122	maddux.evsc.virginia.ec	288	glue.umd.edu	2145

April		May		June		July		August		September	
ntsg.umt.edu	25124	ntsg.umt.edu	5961	ntsg.umt.edu	8358	ntsg.umt.edu	11318	icess.ucsb.edu	3718	ntsg.umt.edu	4166
eas.gatech.edu	2318	essic.umd.edu	4949	essic.umd.edu	5892	glue.umd.edu	3731	ntsg.umt.edu	2937	cs.arizona.edu	2824
geog.ucsb.edu	1401	geog.ucsb.edu	4482	geog.ucsb.edu	2325	crsa.bu.edu	2614	cs.arizona.edu	2412	ece.arizona.edu	1025
glue.umd.edu	1251	bu.edu	1770	cisunix.unh.edu	1059	geog.ucsb.edu	2326	bu.edu	2351	bu.edu	895
bu.edu	859	glue.umd.edu	953	cs.arizona.edu	1053	ku.edu	1942	unh.edu	980	ku.edu	654



Land Processes DAAC  
Science Advisory Panel Meeting  
February 3-5, 2003



# User Characterization

- **Top 5 MODIS Users FY02**

- ◆ Government Domain
- ◆ Granules Distributed

October		November		December		January		February		March	
kratmos.gsfc.nasa.gov	1165	kratmos.gsfc.nasa.gov	2828	kratmos.gsfc.nasa.gov	1496	kratmos.gsfc.nasa.gov	5231	gscmail.gsfc.nasa.gov	4664	gscmail.gsfc.nasa.gov	9796
eosdata.gsfc.nasa.gov	179	eosdata.gsfc.nasa.gov	182	hades.gsfc.nasa.gov	299	gsfc.nasa.gov	851	kratmos.gsfc.nasa.gov	3453	kratmos.gsfc.nasa.gov	2425
daac.gsfc.nasa.gov	106	hades.gsfc.nasa.gov	146	usgs.gov	147	ltpmail.gsfc.nasa.gov	610	gsc.gsfc.nasa.gov	572	gsfc.nasa.gov	556
usgs.gov	76	usgs.gov	132	eosdata.gsfc.nasa.gov	114	hades.gsfc.nasa.gov	404	usgs.gov	345	usgs.gov	372
hydrolab.arsusda.gov	70	taiga.gsfc.nasa.gov	14	giss.nasa.gov	85	giss.nasa.gov	297	gsfc.nasa.gov	169	ltpmail.gsfc.nasa.gov	204

April		May		June		July		August		September	
gsfc.nasa.gov	490	ltpmail.gsfc.nasa.gov	3226	climate.gsfc.nasa.gov	10159	usgs.gov	480	kratmos.gsfc.nasa.gov	7134	kratmos.gsfc.nasa.gov	2028
eosdata.gsfc.nasa.gov	488	climate.gsfc.nasa.gov	714	gscmail.gsfc.nasa.gov	314	murphys.gsfc.nasa.gov	210	usgs.gov	3022	gsfc.nasa.gov	1175
usgs.gov	450	usgs.gov	309	usgs.gov	224	kratmos.gsfc.nasa.gov	138	gsfc.nasa.gov	726	climate.gsfc.nasa.gov	442
hades.gsfc.nasa.gov	157	eosdata.gsfc.nasa.gov	209	hades.gsfc.nasa.gov	96	eosdata.gsfc.nasa.gov	137	climate.gsfc.nasa.gov	216	epa.gov	313
climate.gsfc.nasa.gov	123	kratmos.gsfc.nasa.gov	84	eosdata.gsfc.nasa.gov	95	giss.nasa.gov	105	usgsgov	13	usgs.gov	240



Land Processes DAAC  
Science Advisory Panel Meeting  
February 3-5, 2003



# User Characterization

- **Top 5 ASTER Users FY02**

- ◆ Educational Domain
- ◆ Granules Distributed

October		November		December		January		February		March	
richmond.edu	440	icess.ucsb.edu	634	cosmos.unomaha.edu	875	nsstc.uah.edu	1148	earth.eps.pitt.edu	8845	cosmos.unomaha.edu	6179
uclink4.berkeley.edu	337	gps.caltech.edu	482	uclink4.berkeley.edu	325	asu.edu	1044	cosmos.unomaha.edu	5916	ivis.eps.pitt.edu	3145
asu.edu	237	maddux.evsc.virginia.edu	154	uwyo.edu	249	hermes.geog.umd.edu	555	gps.caltech.edu	1460	uno.edu	1216
higp.hawaii.edu	223	utdallas.edu	108	nsstc.uah.edu	247	inis.iarc.uaf.edu	317	asu.edu	1344	tamu.edu	750
icess.ucsb.edu	204	bu.edu	100	wright.edu	190	maddux.evsc.virginia.edu	204	nsstc.uah.edu	606	lib.muohio.edu	470

April		May		June		July		August		September	
cosmos.unomaha.edu	11560	cosmos.unomaha.edu	5058	cosmos.unomaha.edu	12948	gps.caltech.edu	6844	cosmos.unomaha.edu	7663	gps.caltech.edu	24149
gps.caltech.edu	5860	ivis.eps.pitt.edu	2491	gps.caltech.edu	7180	pitt.edu	1651	gps.caltech.edu	5686	cosmos.unomaha.edu	4847
ivis.eps.pitt.edu	3905	gps.caltech.edu	2018	lib.muohio.edu	1825	ukans.edu	895	ku.edu	1334	its.caltech.edu	4023
rad.ess.washington.edu	318	wright.edu	349	pitt.edu	1576	cosmos.unomaha.edu	774	mit.edu	787	ugcs.caltech.edu	2641
rad.geology.washington.edu	260	clarku.edu	342	ivis.eps.pitt.edu	1423	ivis.eps.pitt.edu	662	nsstc.uah.edu	501	ku.edu	792



# User Characterization

- **Top 5 ASTER Users FY02**

- ◆ Government Domain
- ◆ Granules Distributed

October		November		December		January		February		March	
usgs.gov	1301	usgs.gov	168	usgs.gov	290	usgs.gov	512	usgs.gov	1237	cdc.gov	2914
lithos.jpl.nasa.gov	54	eosdata.gsfc.nasa.gov	75	hydrolab.arsusda.gov	109	jpl.nasa.gov	65	noaa.gov	518	usgs.gov	996
hydrolab.arsusda.gov	29	flagmail.wr.usgs.gov	54	jpl.nasa.gov	42	lithos.jpl.nasa.gov	52	amoun.er.anl.gov	160	igloo.gsfc.nasa.gov	326
jpl.nasa.gov	15	hydrolab.arsusda.gov	37	e0ins01u.ecs.nasa.gov	10	gsfc.nasa.gov	47	lithos.jpl.nasa.gov	105	jpl.nasa.gov	256
flagmail.wr.usgs.gov	13	edcsgs16.cr.usgs.gov	15	lithos.jpl.nasa.gov	9	altyn.jpl.nasa.gov	43	jpl.nasa.gov	78	lithos.jpl.nasa.gov	153

April		May		June		July		August		September	
cdc.gov	5829	usgs.gov	3499	usgs.gov	861	usgs.gov	2737	usgs.gov	1751	usgs.gov	186
usgs.gov	973	cdc.gov	1747	cdc.gov	658	hydrolab.arsusda.gov	86	hydrolab.arsusda.gov	141	aster.jpl.nasa.gov	33
jpl.nasa.gov	944	jpl.nasa.gov	76	jpl.nasa.gov	430	jpl.nasa.gov	70	lithos.jpl.nasa.gov	42	lithos.jpl.nasa.gov	20
lithos.jpl.nasa.gov	44	congo.jpl.nasa.gov	28	eosdata.gsfc.nasa.gov	25	congo.jpl.nasa.gov	35	aster.jpl.nasa.gov	40	jpl.nasa.gov	4
osmre.gov	40	lithos.jpl.nasa.gov	27	glacier.gsfc.nasa.gov	15	lithos.jpl.nasa.gov	16	jpl.nasa.gov	31	daac.gsfc.nasa.gov	3

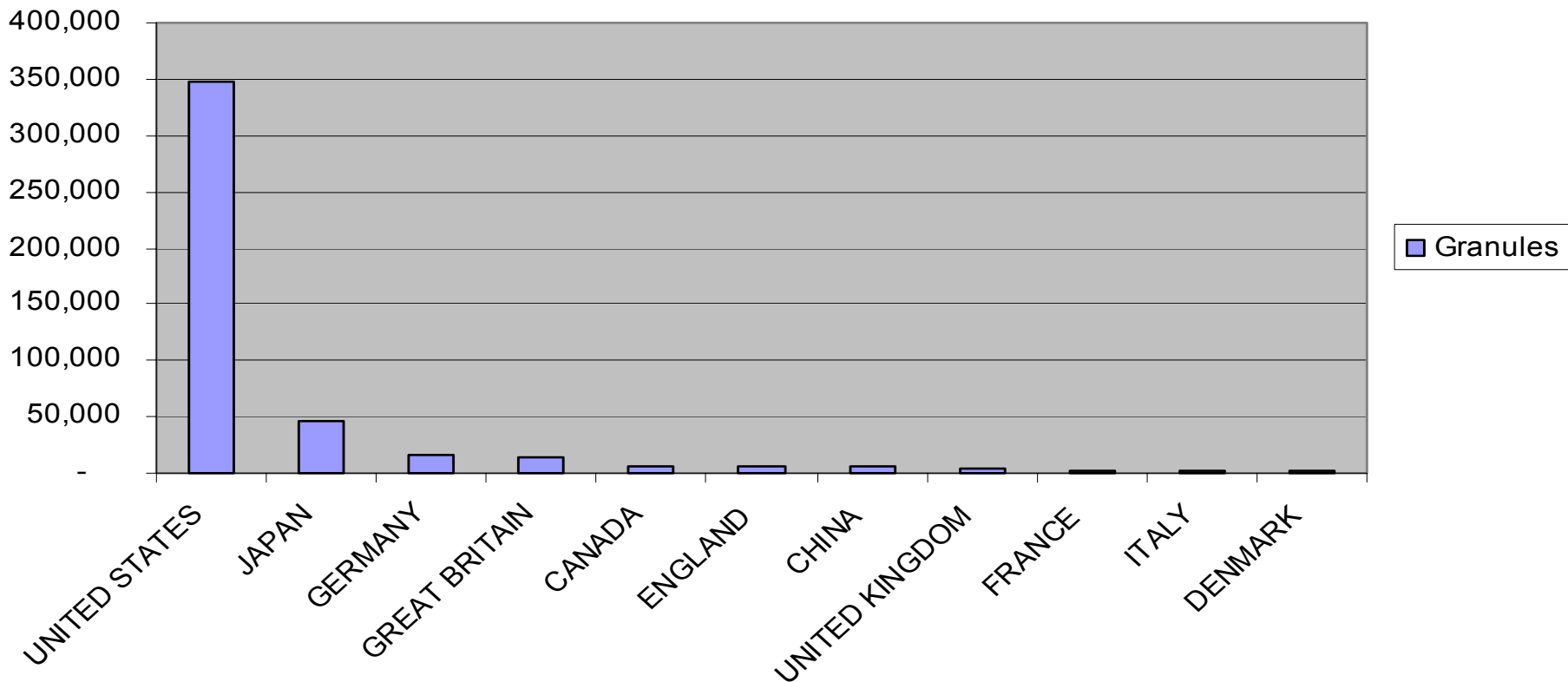


Land Processes DAAC  
Science Advisory Panel Meeting  
February 3-5, 2003



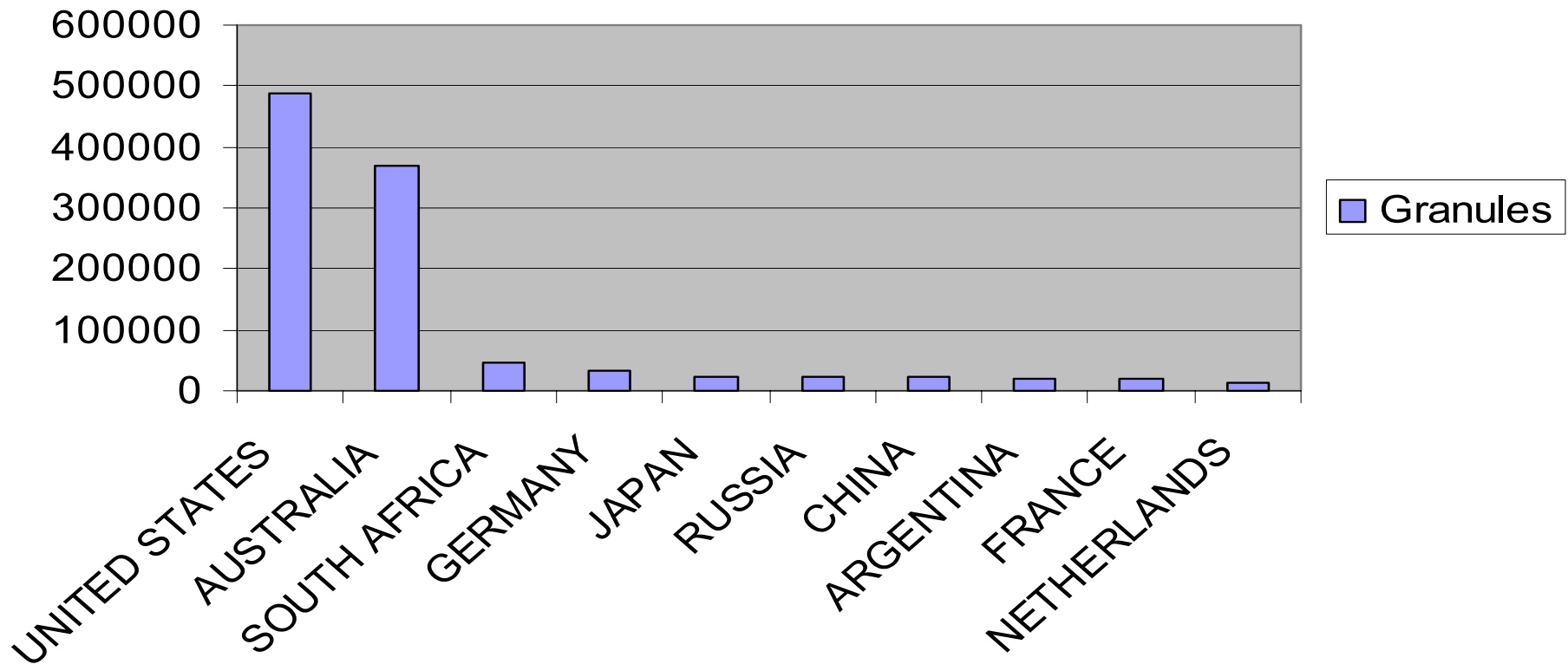
# User Characterization

## MODIS FY02 Distribution



# User Characterization

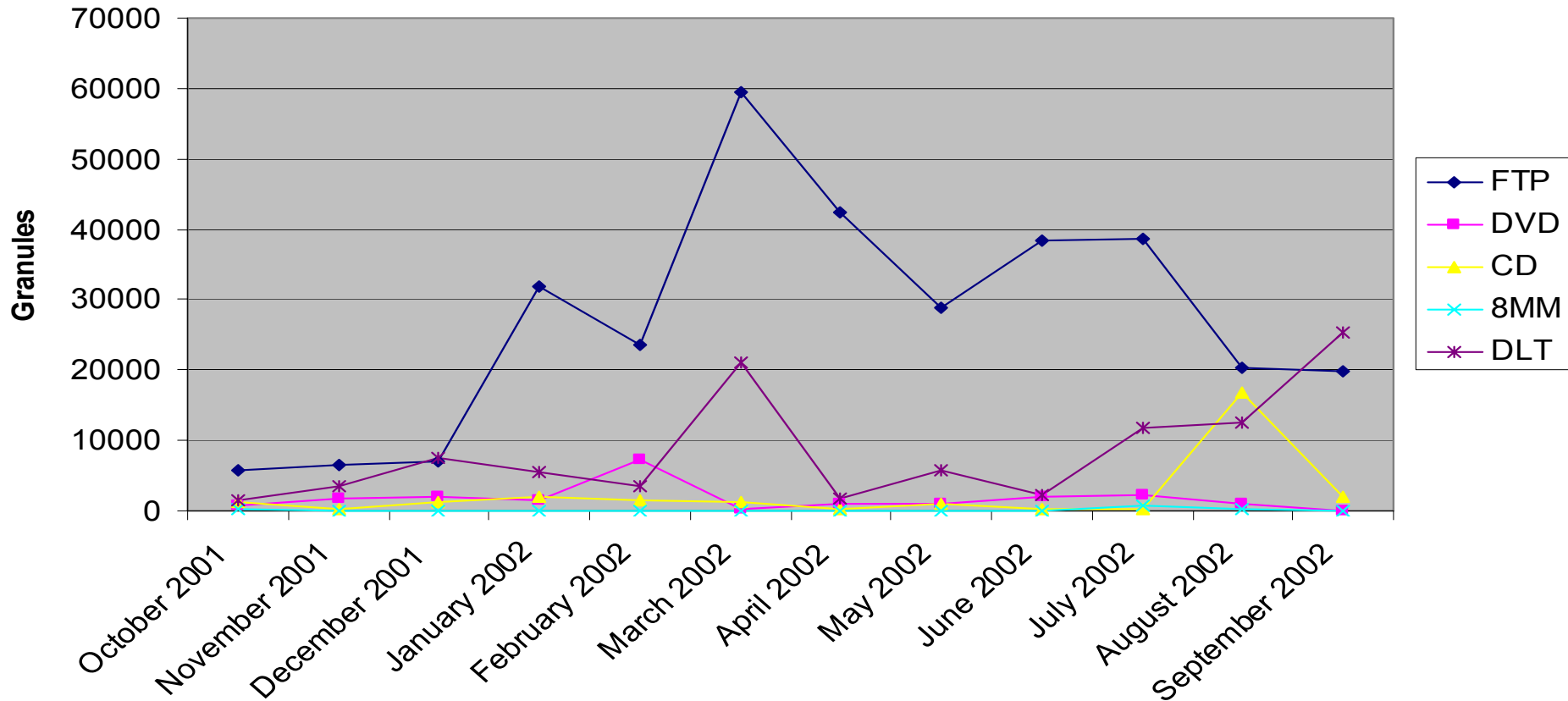
## ASTER FY02 Distribution





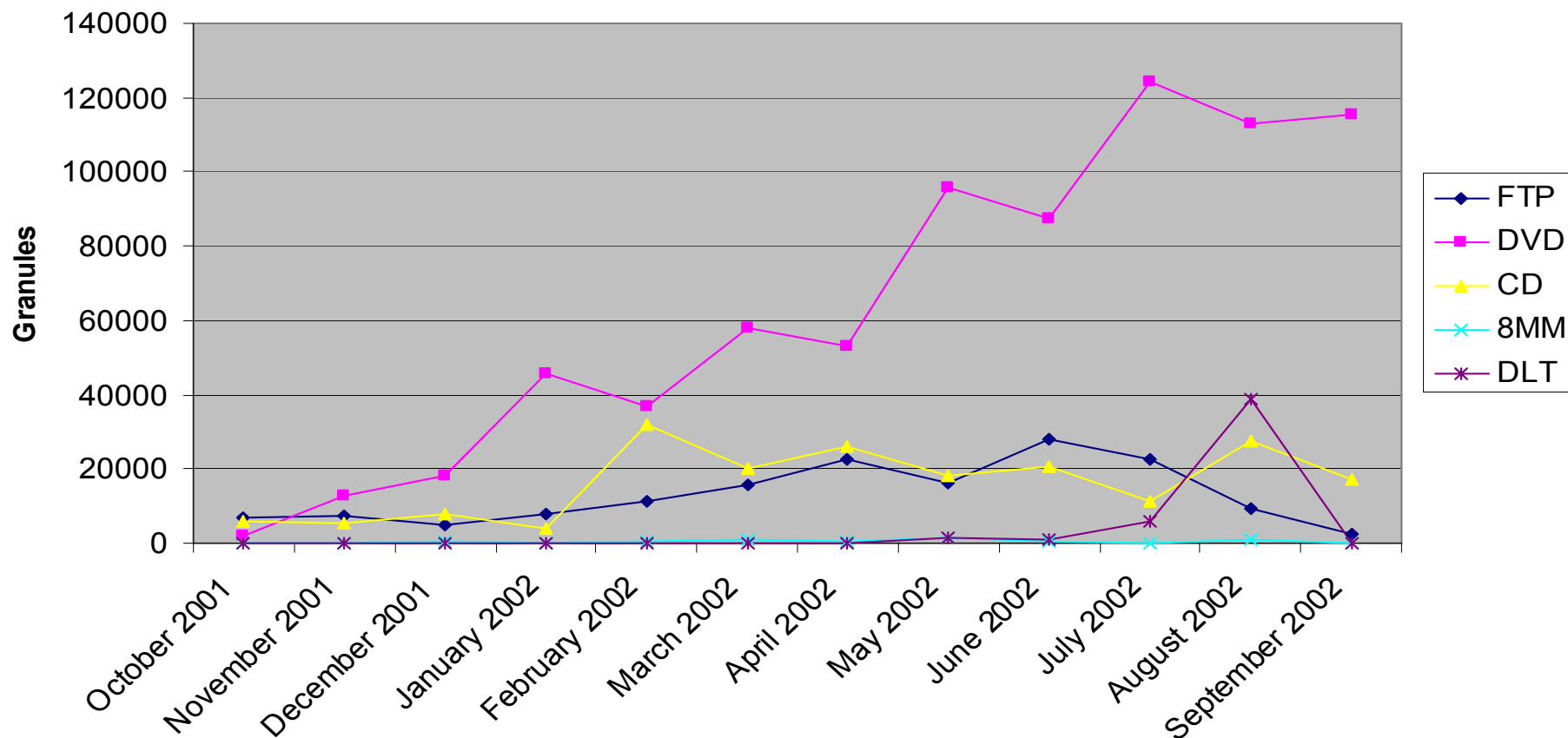
# User Characterization

MODIS FY02 Distribution



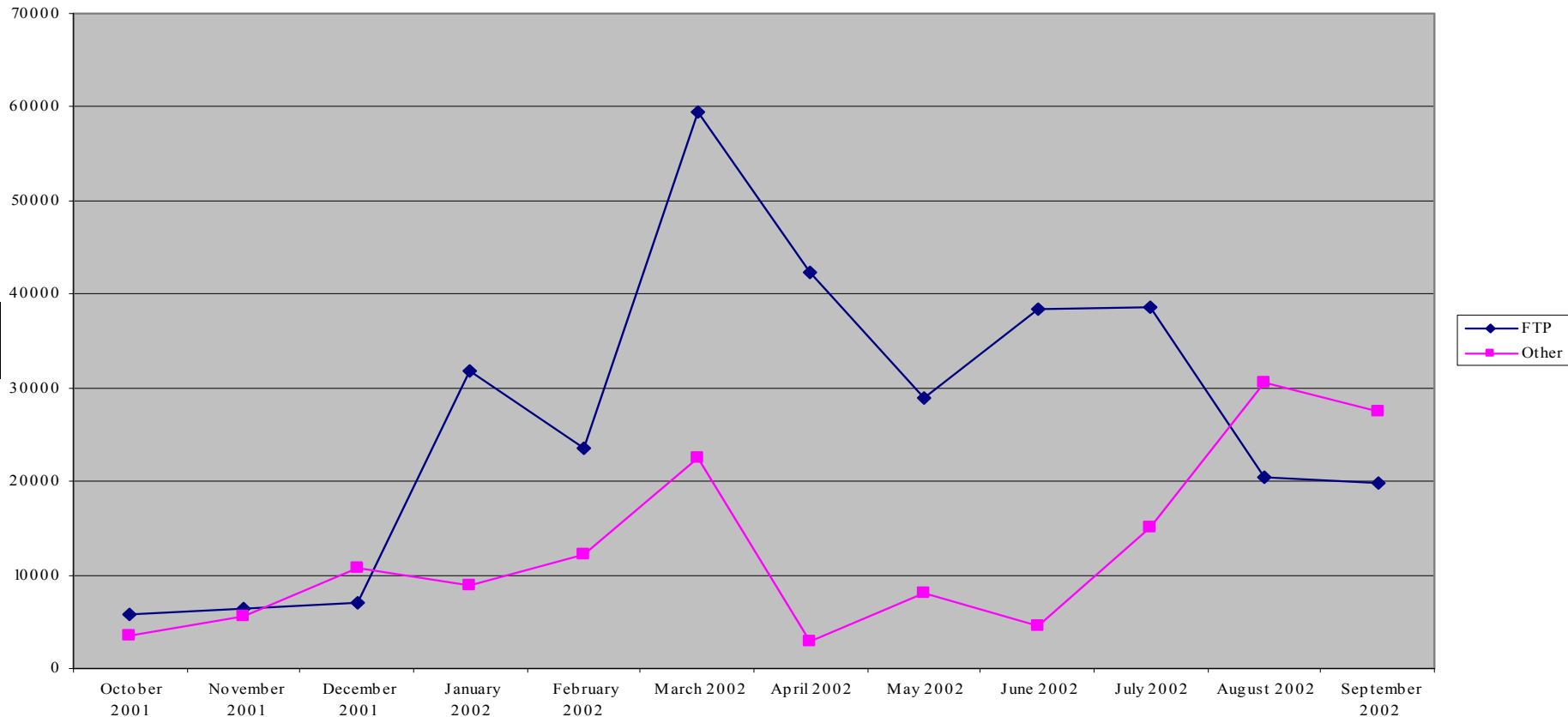
# User Characterization

ASTER FY02 Distribution



# User Characterization

MODIS FY02 Distribution

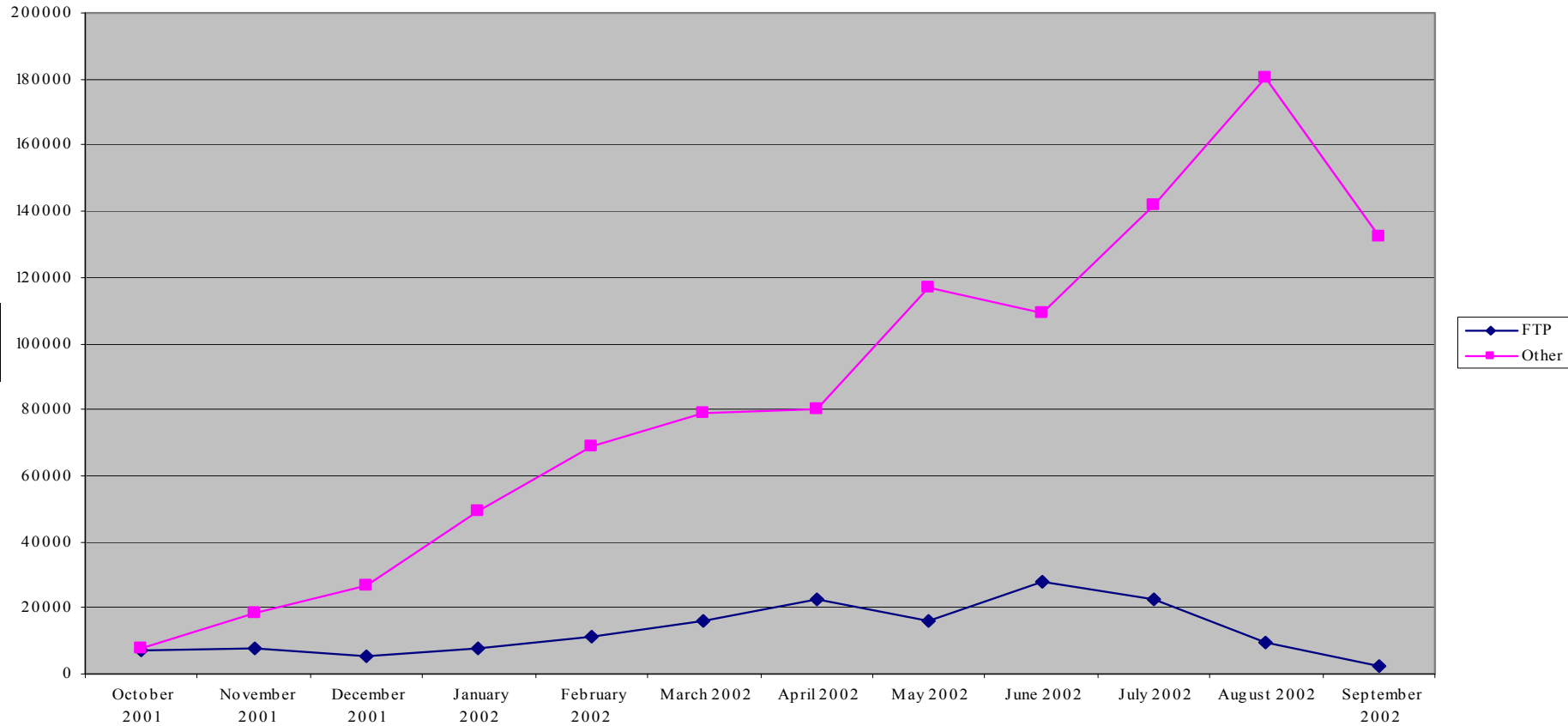


Land Processes DAAC  
Science Advisory Panel Meeting  
February 3-5, 2003



# User Characterization

ASTER FY02 Distribution



Land Processes DAAC  
Science Advisory Panel Meeting  
February 3-5, 2003



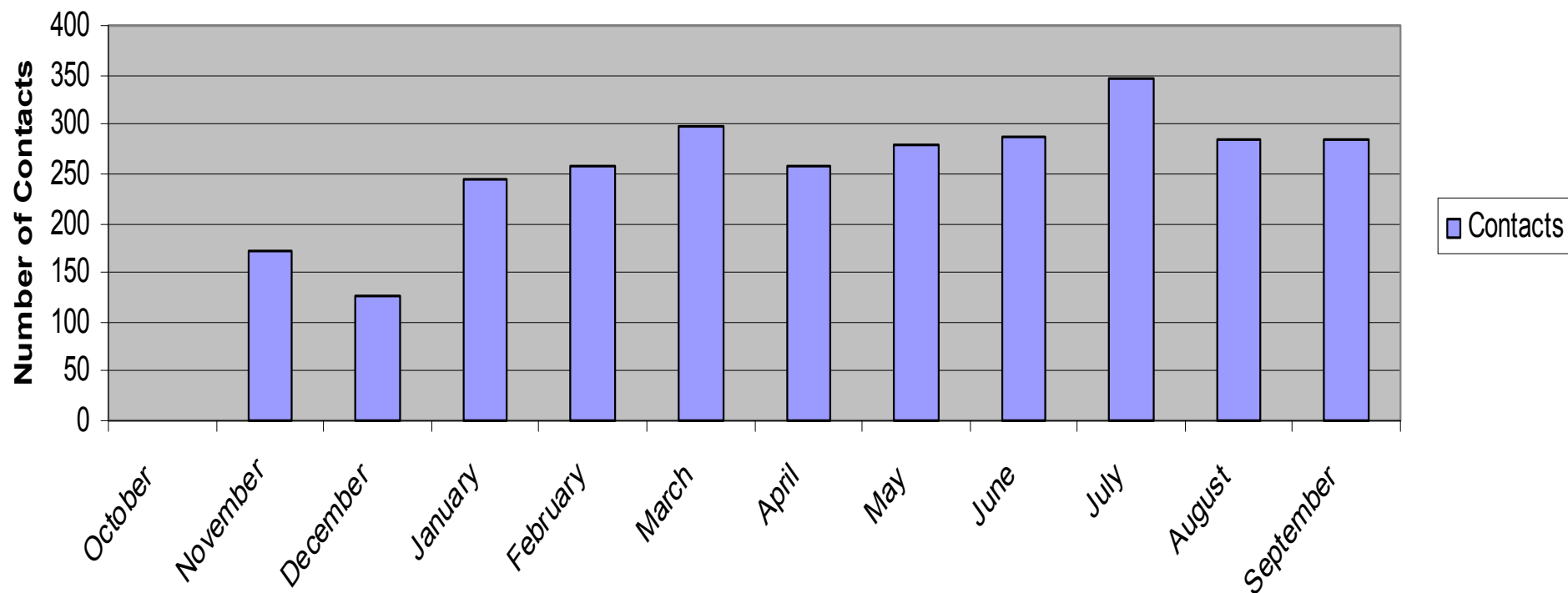
# User Characterization

- **Redistribution Avenues**

- ◆ ECHO
- ◆ ESIPs
- ◆ RESACs
- ◆ Australian Customer?
- ◆ AmericaView
- ◆ ASTERImages.com

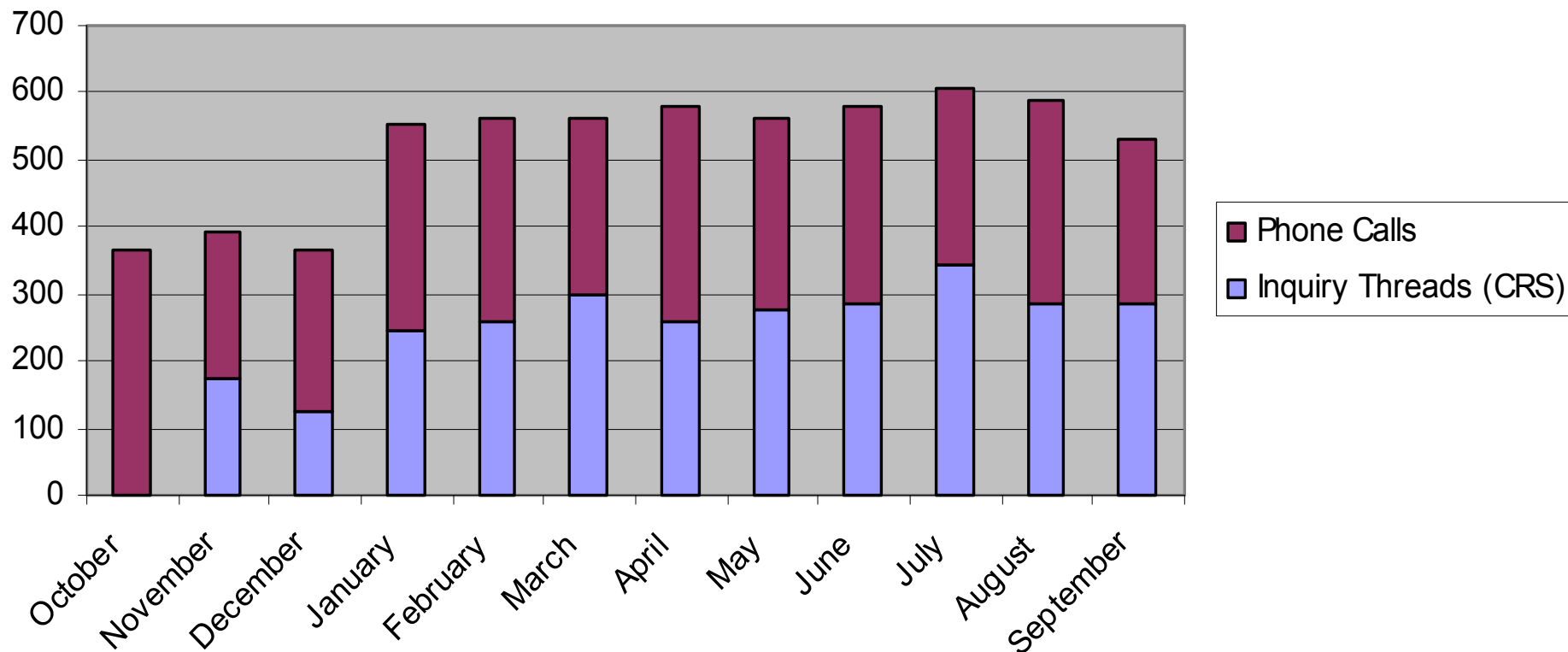
# User Characterization

## User Services Inquiry Threads



# User Characterization

## LP DAAC User Services



# User Characterization

## ● Depth of Customer Inquiries

- ◆ 80% of Inquiries are answered by Customer Service Rep.
  - ◆ Data delivery
  - ◆ Billing
- ◆ 15% of Inquiries are elevated to U.S. Support
  - ◆ Software Import
  - ◆ Projection issues
- ◆ 3 % of Inquiries are elevated to Science Support
  - ◆ Accuracies
  - ◆ Metadata
  - ◆ Specialized Applications
- ◆ 2% of Inquiries are elevated to Science Team
  - ◆ Specialized Applications



# User Characterization

- **Conferences and Workshops in FY02**

- **Workshop:** ASTER DEM Course  
**Date:** February 26 - 28, 2002  
**Attendance:** 20  
**Location:** EROS Data Center
- **Conference:** Association of American Geographers  
**Date:** March 19 – 22, 2002  
**Attendance:** 3,700 (met 400 people)  
**Location:** Los Angeles, CA
- **Conference:** The GEOTec Event (GIS 2002)  
**Date:** April 8 – 11, 2002  
**Attendance:** 2,200 (met 225 people)  
**Location:** Toronto, Canada

- **Conference:** ASPRS-ACSM  
**Date:** April 22 – 24, 2002  
**Attendance:** 4,500 (met 450 people)  
**Location:** Washington, DC
- **Workshop:** Overview of MODIS and ASTER Data Products and Access  
**Date:** April 23, 2002  
**Attendance:** 20  
**Location:** Lincoln, NE
- **Workshop:** Remote Sensing Workshop  
**Date:** April 23, 2002  
**Attendance:** 15  
**Location:** Sinte Gleska University
- **Workshop:** ASTER DEM Workshop  
**Date:** May 16 – 18, 2002  
**Attendance:** 20  
**Location:** Oxford, Ohio



# User Characterization

## ● Conferences and Workshops in FY02

- **Workshop:** ASTER DEM Workshop  
**Date:** May 21 - 23, 2002  
**Attendance:** 15  
**Location:** Houston, Texas
- **Workshop:** Remote Sensing Workshop  
**Date:** May 29, 2002  
**Attendance:** 150  
**Location:** Lacey, Washington
- **Workshop:** MODIS Land Cover Workshop  
**Date:** June 3 – 5, 2002  
**Attendance:** 40  
**Location:** College Park, MD
- **Conference:** IGARSS  
**Date:** June 24 - 28, 2002  
**Attendance:** 1,385 (met 300 people)  
**Location:** Toronto, Canada
- **Conference:** ESRI International User Conference  
**Date:** July 7 – 22, 2002  
**Attendance:** 13,000 (met 450 people)  
**Location:** San Diego, CA
- **Workshop:** MODIS Vegetation Workshop  
**Date:** July 15 – 18, 2002  
**Attendance:** 140  
**Location:** Missoula, Montana

# User Characterization

- User Characterization data not readily accessible

- ◆ Raw file from PDS for Media

2002/12 0000212040032 AST_L1A	666	59016	CDRMS	UNITED STATES	joisenho@cosmos.unomaha.edu
2002/12 0000212040033 AST_L1B	94	11656	CDRMS	UNITED STATES	joisenho@cosmos.unomaha.edu
2002/12 0000212040034 AST_06S	233	4893	DVD	UNITED STATES	ukamp@depaul.edu
2002/12 0000212040034 AST_06T	233	466	DVD	UNITED STATES	ukamp@depaul.edu
2002/12 0000212040036 AST_06V	213	17892	DVD	UNITED STATES	ukamp@depaul.edu
2002/12 0000212040035 AST_L1B	181	15564	CDRMS	UNITED STATES	joisenho@cosmos.unomaha.edu
2002/12 0000212040036 AST_06S	93	1953	CDRMS	UNITED STATES	joisenho@cosmos.unomaha.edu
2002/12 0000212040037 AST_06T	93	186	CDRMS	UNITED STATES	joisenho@cosmos.unomaha.edu
2002/12 0000212040038 AST_06S	182	3822	CDRMS	UNITED STATES	joisenho@cosmos.unomaha.edu
2002/12 0000212040039 AST_06T	182	364	CDRMS	UNITED STATES	joisenho@cosmos.unomaha.edu
2002/12 0000212040040 AST_06S	54	1134	DVD	UNITED STATES	ukamp@depaul.edu
2002/12 0000212040040 AST_06T	54	108	DVD	UNITED STATES	ukamp@depaul.edu
2002/12 0000212040040 AST_06V	53	4452	DVD	UNITED STATES	ukamp@depaul.edu
2002/12 0000212040040 AST_L1A	291	33753	DVD	UNITED STATES	ukamp@depaul.edu
2002/12 0000212040040 AST_L1B	53	6572	DVD	UNITED STATES	ukamp@depaul.edu
2002/12 0000212040041 AST_06V	93	7812	CDRMS	UNITED STATES	joisenho@cosmos.unomaha.edu
2002/12 0000212040042 AST_06V	101	8484	CDRMS	UNITED STATES	joisenho@cosmos.unomaha.edu
2002/12 0000212040043 AST_L1A	4	144	DVD	UNITED STATES	ukamp@depaul.edu
2002/12 0000212040043 AST_L1B	4	152	DVD	UNITED STATES	ukamp@depaul.edu
2002/12 0000212040044 AST_L1A	358	39351	DVD	UNITED STATES	ukamp@depaul.edu
2002/12 0000212040044 AST_L1B	131	15212	DVD	UNITED STATES	ukamp@depaul.edu
2002/12 0000212040045 AST_06S	132	2772	DVD	UNITED STATES	ukamp@depaul.edu
2002/12 0000212040045 AST_06T	131	262	DVD	UNITED STATES	ukamp@depaul.edu
2002/12 0000212040045 AST_06V	119	9996	DVD	UNITED STATES	ukamp@depaul.edu
2002/12 0000212040046 AST14DE	1	23	CDRMS	SRI LANKA	c.gangodagamage@cgiar.org
2002/12 0000212050001 MOD09Q1	2	276	CDRMS	UNITED STATES	Jeffrey.T.Morissette@nasa.gov
2002/12 0000212050001 MOD13Q1	2	1014	CDRMS	UNITED STATES	Jeffrey.T.Morissette@nasa.gov
2002/12 0000212050002 MOD43B4	399	12369	DVD	AUSTRALIA	Lucy.Randall@brs.gov.au
2002/12 0000212060001 AST_L1B	4	496	CDRMS	NETHERLANDS	reinhink@tcc.nl
2002/12 0000212060002 AST_L1A	2	232	CDRMS	NETHERLANDS	reinhink@tcc.nl
2002/12 0000212060003 AST_L1A	1	116	CDRMS	NETHERLANDS	reinhink@tcc.nl
2002/12 0000212060004 AST_L1A	81	8464	CDRMS	UNITED STATES	joisenho@cosmos.unomaha.edu
2002/12 0000212060005 AST_L1B	20	2480	CDRMS	UNITED STATES	joisenho@cosmos.unomaha.edu
2002/12 0000212060006 AST_L1A	596	67376	CDRMS	UNITED STATES	joisenho@cosmos.unomaha.edu
2002/12 0000212060007 AST_L1B	173	20592	CDRMS	UNITED STATES	joisenho@cosmos.unomaha.edu
2002/12 0000212060008 AST_06S	20	420	CDRMS	UNITED STATES	joisenho@cosmos.unomaha.edu
2002/12 0000212060009 AST_06S	174	3654	CDRMS	UNITED STATES	joisenho@cosmos.unomaha.edu
2002/12 0000212060010 AST_06T	20	40	CDRMS	UNITED STATES	joisenho@cosmos.unomaha.edu
2002/12 0000212060011 AST_06T	174	348	CDRMS	UNITED STATES	joisenho@cosmos.unomaha.edu
2002/12 0000212060012 AST_06V	20	1680	CDRMS	UNITED STATES	joisenho@cosmos.unomaha.edu
2002/12 0000212060013 AST_06V	163	13692	CDRMS	UNITED STATES	joisenho@cosmos.unomaha.edu
2002/12 0000212060014 AST_L1A	64	7168	CDRMS	UNITED STATES	joisenho@cosmos.unomaha.edu

- ◆ Raw file from dashboard Ad Hoc query

300149365	AST_07.003	1	FtpPull	United States	taniyar@rmsi.com
300149365	AST_07.003	1	FtpPull	United States	taniyar@rmsi.com
300149369	AST_04.002	1	FtpPull	United States	ssaxon@usgs.gov
300149365	AST_07.003	1	FtpPull	United States	taniyar@rmsi.com
300149366	AST_07.003	1	FtpPull	United States	Ian.Tapley@csiro.au
300149366	AST_07.003	1	FtpPull	United States	Ian.Tapley@csiro.au
300149370	MOD13A2.003	1	FtpPull	JAPAN	Kobayashi.hideki@nies.go.jp
300149366	AST_07.002	1	FtpPull	United States	Ian.Tapley@csiro.au
300149371	MOD13A2.003	21	FtpPull	UNITED STATES	ozdogan@bu.edu
300149372	MOD11A2.001	1	FtpPull	INDIA	ppkcs@yahoo.com
300149374	MOD13Q1.003	1	FtpPull	INDIA	ppkcs@yahoo.com
300149380	AST14DEM.002	1	FtpPull	ITALY	abete@softhome.net
300149377	AST_07.003	1	FtpPull	United States	taniyar@rmsi.com
300149377	AST_07.003	1	FtpPull	United States	taniyar@rmsi.com
300149379	AST_07.003	1	FtpPull	United States	taniyar@rmsi.com
300149379	AST_07.003	1	FtpPull	United States	taniyar@rmsi.com
300149379	AST_07.003	1	FtpPull	United States	taniyar@rmsi.com
300149379	AST_07.003	1	FtpPull	United States	taniyar@rmsi.com
300149379	AST_07.003	1	FtpPull	United States	taniyar@rmsi.com
300149379	AST_07.003	1	FtpPull	United States	taniyar@rmsi.com
300149382	AST_04.002	1	FtpPull	United States	jray@usgs.gov
300149379	AST_07.003	1	FtpPull	United States	taniyar@rmsi.com
300149379	AST_07.003	1	FtpPull	United States	taniyar@rmsi.com
300149387	MOD13Q1.003	53	FtpPull	ENGLAND	anthony.wilson@zoo.ox.ac.uk
300149384	MOD13Q1.003	53	FtpPull	ENGLAND	anthony.wilson@zoo.ox.ac.uk
300149385	MOD13Q1.003	53	FtpPull	ENGLAND	anthony.wilson@zoo.ox.ac.uk
300149386	MOD13Q1.003	53	FtpPull	ENGLAND	anthony.wilson@zoo.ox.ac.uk
300149388	MOD13Q1.003	53	FtpPull	ENGLAND	anthony.wilson@zoo.ox.ac.uk
300149389	AST_07.002	1	FtpPull	United States	wouters@geoserve.nl
300149389	AST_07.002	1	FtpPull	United States	wouters@geoserve.nl
300149389	AST_07.003	1	FtpPull	United States	wouters@geoserve.nl
300149389	AST_07.003	1	FtpPull	United States	wouters@geoserve.nl
300149390	AST_L1B.003	1	FtpPull	BELGIUM	ptrefois@africanmuseum.be



# User Characterization

- **User Characterization data not readily accessible**
  - ◆ Collection of e-mail data by month for .gov and .edu

The image displays a large, multi-column table of user characterization data. The table is organized into two main sections, separated by a horizontal line. Each section contains columns with headers that are mostly illegible due to low resolution. The data within the cells is also illegible. The table is color-coded with horizontal bars at the top and bottom of each section in various colors like yellow, orange, pink, cyan, green, purple, and red.