

# ASTER Report

LPDAAC SAP Meeting  
February 3-4, 2003



National Aeronautics and  
Space Administration  
Jet Propulsion Laboratory  
California Institute of Technology  
Pasadena, California



# Instrument and Data Status

- => Instrument continues to function normally
- => Over 700,000 scenes have been acquired
- => Charging policy implemented August 2002
- => All data products are validated (except Polar Cloud Mask that is provisional)



# EOS Recompetition

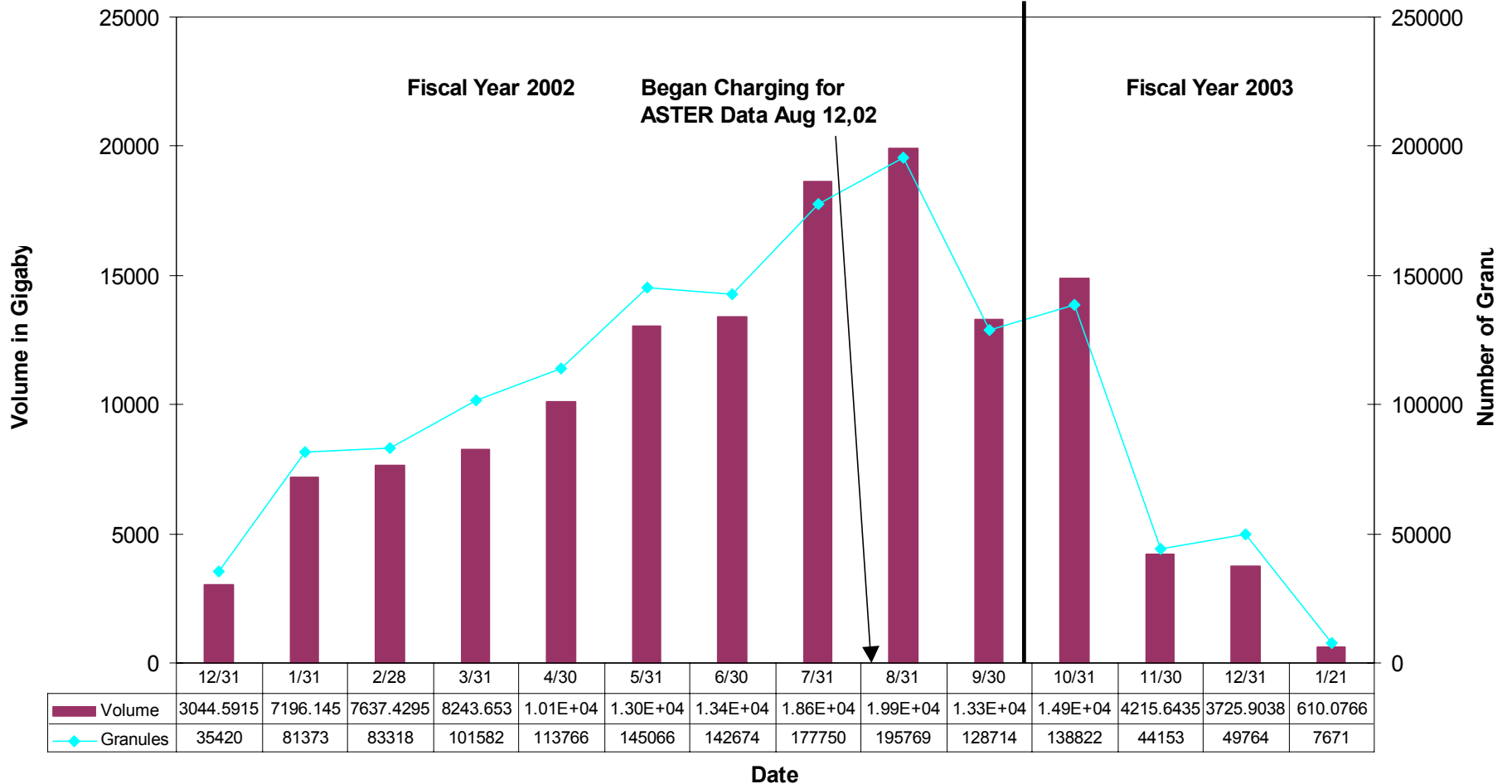
=> Instrument and operations team is a sole-source proposal; includes calibration, scheduling, meetings

=> Science Team members will be re-selected based on open competition through proposals: includes algorithm improvements; new algorithms; new science

=> Proposals due April 15



## Monthly ASTER Distribution



This chart depicts all distribution media (ftp, CD, DVD, DLT, 8mm)



# Strategies to Increase Use of Higher Level Data Products

*Not enough Level 1B scenes*

⇒ DAAC started L1B processing of data from 3/99 to 12/01

*Hard to use L2 ordering tool*

⇒ New EDG direct ordering link for higher level products

*EDG browse is slow*

⇒ New ASTER browse tool



National Aeronautics and  
Space Administration  
Jet Propulsion Laboratory  
California Institute of Technology  
Pasadena, California

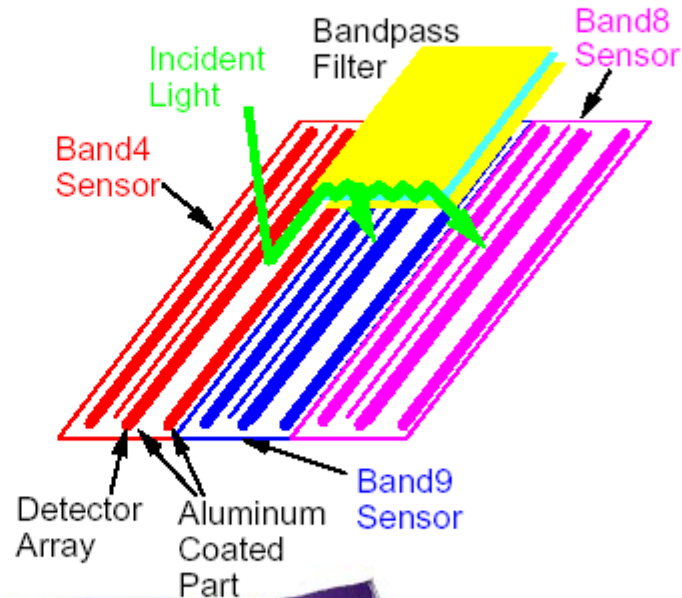


# SWIR Cross-talk Problem

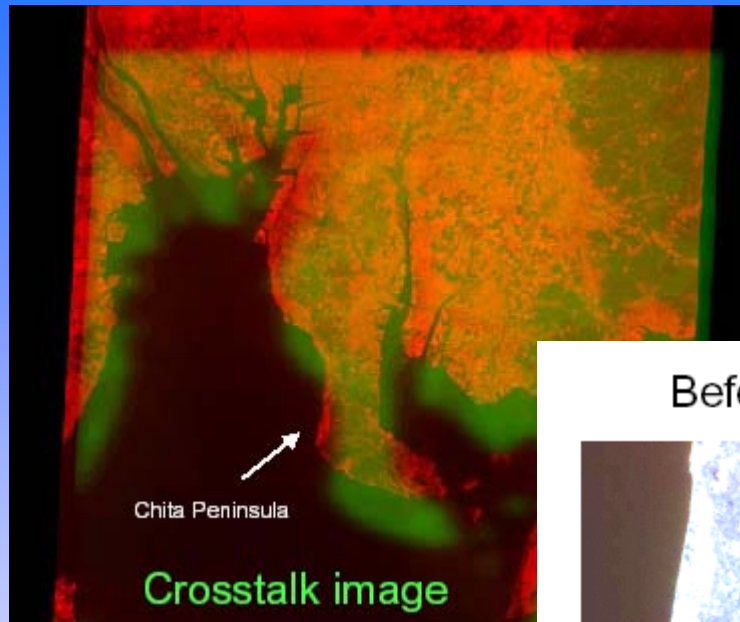
Stray light reflects from backside of filters to adjacent detectors. Most pronounced for Band 4 contaminating Bands 5 and 9

## Crosstalk Mechanism

Incident light to band 4 detectors is reflected at aluminum coated parts and reaches to the detectors of other bands by multi-reflection in the cavity between detector plane and bandpass filter.



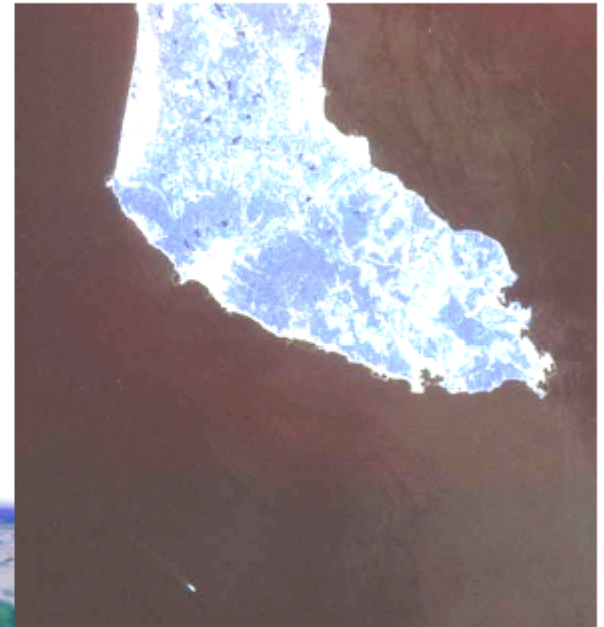
# SWIR Cross-talk Problem



Before correction



After correction



# SWIR Cross-talk Problem

Software correction has been developed, and is being evaluated

Implementation plan is to offer correction as Level 2 radiance/reflectance product

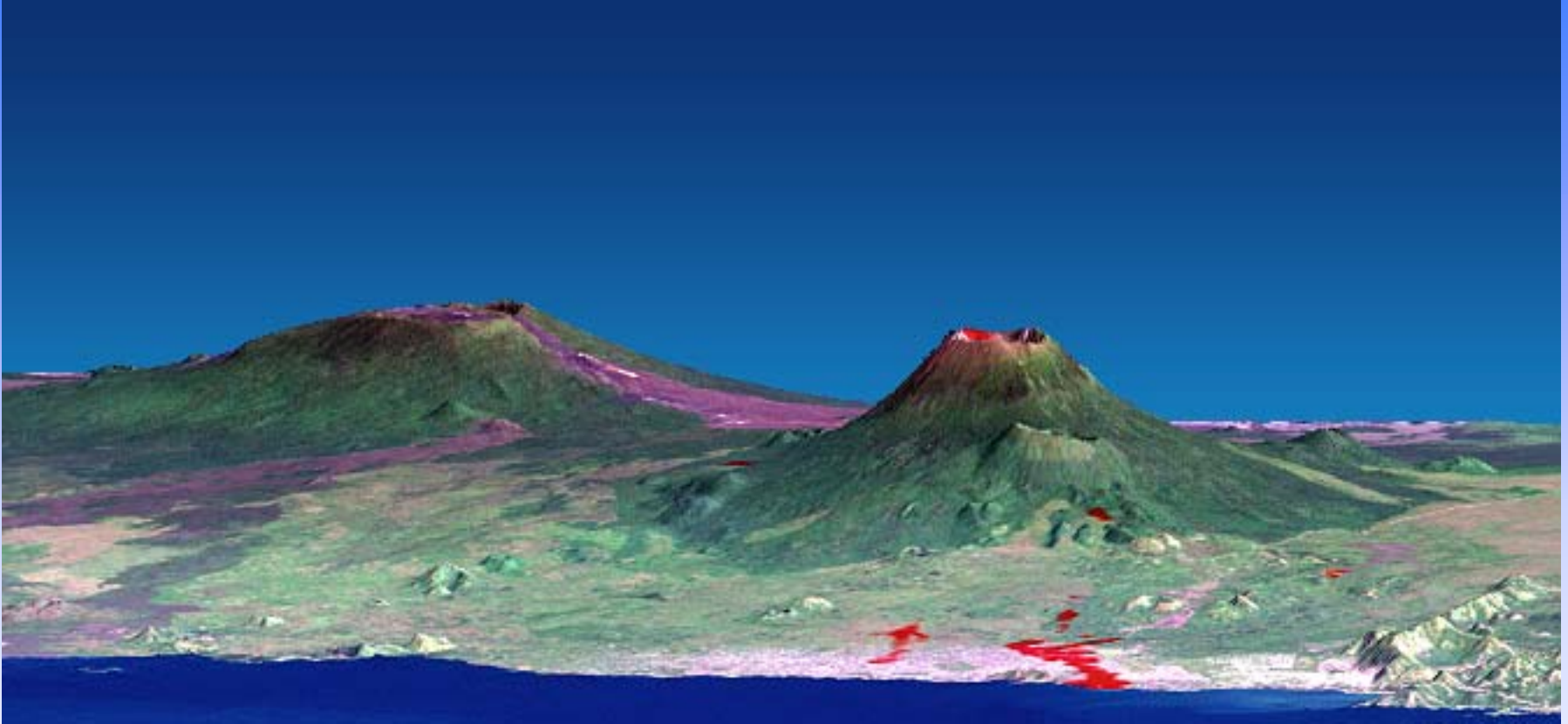
Investigating option of offering corrected Level 1B product





# Nyiragongo Volcano, Congo Eruption

## Combination of ASTER, ETM+, SRTM



National Aeronautics and  
Space Administration  
Jet Propulsion Laboratory  
California Institute of Technology  
Pasadena, California



# Forest Fire near Canberra, Australia

Acquired January 26, 2003



National Aeronautics and  
Space Administration  
Jet Propulsion Laboratory  
California Institute of Technology  
Pasadena, California



# Seasonal rapid surge and breakup of the Columbia Glacier, Alaska

Using ASTER, Landsat 7 and 5, and DOE MTI to observe and measure seasonal changes

Need multiple satellites for sufficient multitemporal coverage



[www.GLIMS.org](http://www.GLIMS.org)

