

NEWSRelease

BUREAU OF LAND MANAGEMENT

1103 N. Fancher • Spokane Valley, WA 99212 • <http://www.blm.gov/or/districts/spokane>

For Release: October 27, 2008

Contact: Scott Boyd (509) 536-1200

Release No: OR130-FY2009-002

Bureau of Land Management Planning Pile Burn Near Antoine Creek

Spokane, WA – The Bureau of Land Management (BLM) will be burning a number of debris piles within the Antoine Creek drainage, roughly 10 miles north of Chelan, WA, in Chelan County. Burning will take place during November dependent on weather conditions.

The burning will take place on lands managed by BLM. This prescribed burn activity is being done to reduce fuel loading, disease levels, and also to reintroduce fire to the ecosystem.

There will be no road closures or impact to travel due to this pile burn. Signs will be posted on necessary roadways leading to the burn location.

This pile burn is part of a fuels reduction program to improve and restore forest health to BLM lands, and will be followed up with selective thinning of diseased trees during the winter months.

For further information contact Scott Boyd at the number above.

- BLM

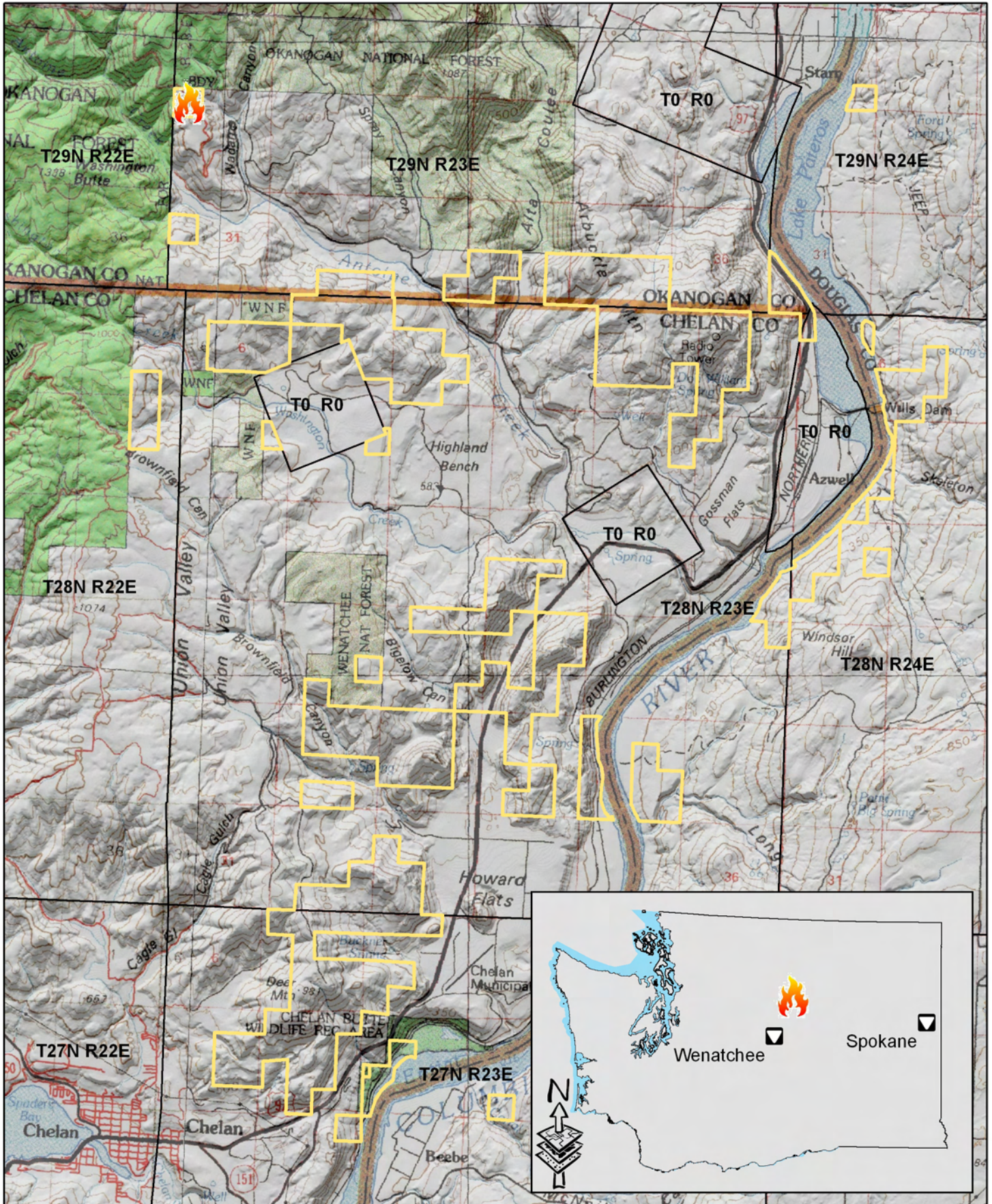
The BLM manages more land – 258 million surface acres – than any other Federal agency. Most of this public land is located in 12 Western States, including Alaska. The Bureau, with a budget of about \$1.8 billion, also administers 700 million acres of sub-surface mineral estate throughout the nation. The BLM's multiple-use mission is to sustain the health and productivity of the public lands for the use and enjoyment of present and future generations. The Bureau accomplishes this by managing such activities as outdoor recreation, livestock grazing, mineral development, and energy production, and by conserving natural, historical, and cultural resources on the public lands.

Spokane District Office
BLM



Antoine Creek Pile Burn - Vicinity Map

T29N R23E Sec. 30 NW ¼ of NW ¼



0 0.25 0.5 1 1.5 2 Miles

Legend

-
 Forest Service
 BLM Pile Burn Unit