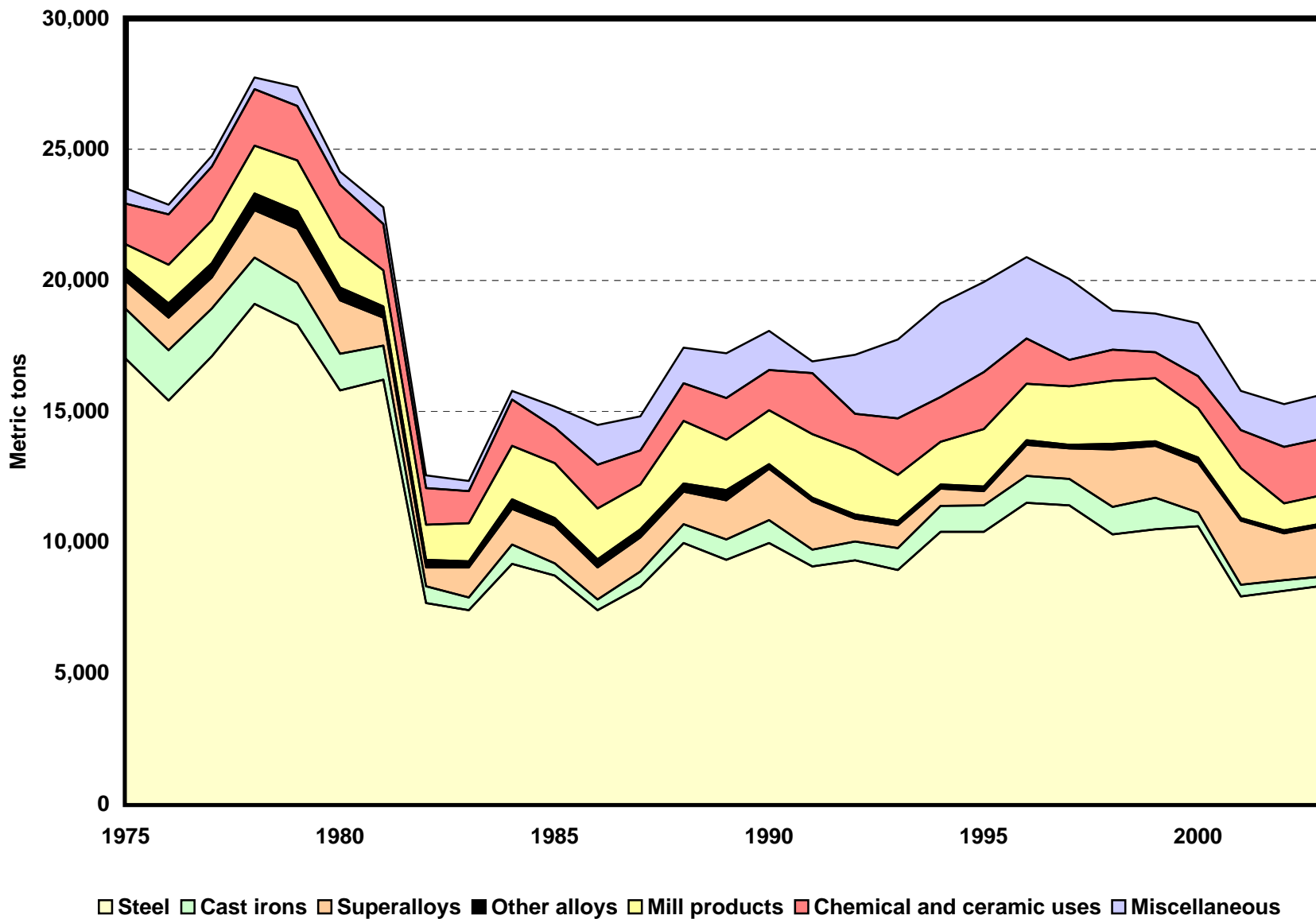


MOLYBDENUM END-USE STATISTICS¹
U.S. GEOLOGICAL SURVEY
[Metric tons of contained molybdenum]
Last modification: September 1, 2005

Year	Steel	Cast irons	Superalloys	Other alloys	Mill products	Chemical and ceramic uses	Miscellaneous	Undistributed	Apparent consumption
1975	17,000	1,910	1,060	479	932	1,540	587	-500	23,000
1976	15,400	1,940	1,240	533	1,490	1,910	380	3,700	26,600
1977	17,100	1,830	1,180	548	1,630	2,060	400	4,000	28,700
1978	19,100	1,770	1,800	651	1,830	2,140	451	2,300	30,000
1979	18,300	1,590	2,080	674	1,930	2,080	717	3,000	30,400
1980	15,800	1,390	2,050	488	1,920	1,990	518	800	25,000
1981	16,200	1,310	1,070	421	1,380	1,760	656	2,300	25,100
1982	7,670	638	728	285	1,350	1,390	494	700	13,200
1983	7,410	480	1,150	232	1,460	1,210	401	4,500	16,800
1984	9,170	743	1,360	358	2,040	1,780	331	1,100	16,900
1985	8,720	476	1,430	287	2,100	1,370	797	2,000	17,200
1986	7,400	412	1,220	311	1,950	1,660	1,530	3,600	18,100
1987	8,290	587	1,310	310	1,700	1,310	1,300	600	15,400
1988	9,970	712	1,240	323	2,390	1,430	1,360	7,600	25,000
1989	9,320	791	1,490	390	1,920	1,600	1,710	-7,420	9,780
1990	9,960	888	1,950	174	2,070	1,540	1,480	2,200	20,300
1991	9,070	645	1,840	149	2,430	2,330	436	1,800	18,700
1992	9,300	734	874	138	2,460	1,400	2,260	-4,900	12,300
1993	8,930	837	889	154	1,760	2,150	3,020	-2,500	15,200
1994	10,400	986	666	148	1,630	1,720	3,570	4,800	23,900
1995	10,400	1,000	547	172	2,200	2,180	3,430	1,000	20,900
1996	11,500	1,040	1,180	165	2,160	1,740	3,100	1,100	22,000
1997	11,400	1,010	1,180	118	2,250	1,000	3,090	-10,300	9,700
1998	10,300	1,050	2,190	215	2,410	1,180	1,500	-2,400	16,400
1999	10,500	1,190	1,980	191	2,400	991	1,480	9,600	28,300
2000	10,600	542	1,890	207	1,880	1,230	2,010	13,200	31,500
2001	7,930	444	2,440	104	1,910	1,460	1,480	5,100	20,900
2002	8,150	394	1,800	101	1,040	2,159	1,630	7,430	22,730
2003	8,360	347	1,950	81	1,090	2,159	1,700	1,260	16,960

¹Compiled by G.R. Matos and M.J. Magyar

End Uses of Molybdenum



Molybdenum End-Use Worksheet Notes

Data Source

The source of data for the molybdenum end-use worksheet is the Minerals Yearbook, an annual collection, compilation, and analysis of mineral industry data, published by the U.S. Bureau of Mines and the U.S. Geological Survey.

End Use

End use is defined as the use of the mineral commodity into a particular industrial sector or product. For molybdenum, end-use categories are steel, cast irons, superalloys, other alloys, mill products, chemical and ceramic uses, and miscellaneous uses. The undistributed category accounts for changes in stock and exports and imports not accounted by end use. It also reflects unreported production.

For the years 1989 and 1997, the calculated apparent consumption depicts a significant drop due to a large increase in the exports reported by the U.S. Census Bureau.

Steel includes carbon, high-strength low-alloy, stainless and heat-resisting, full alloy, and tool. Cast iron is a gray, malleable, ductile iron. Other alloys are alloys other than steels, cast irons, and superalloys. It includes welding materials (structural and hard-facing) and other alloys. Mill products made from metal power include construction, mining, oil and gas, and metal working machinery. Miscellaneous and unspecified uses include cemented carbides and related products (includes ingot, wire, rod, and sheet), lubricants and other unspecified uses.

Data are rounded to no more than three significant digits; data may not add to totals shown.

References

U.S. Bureau of Mines, 1977–96, Minerals Yearbook, v. I, 1975–94.

U.S. Geological Survey, 1997–2005, Minerals Yearbook, v. I, 1995–2003.

Recommended Citation Format:

(1) If taken from CD version:

U.S. Geological Survey, [year of last update, e.g., 2005], [Mineral commodity, e.g., Gold] statistics, *in* Kelly, T.D., and Matos, G.R., comps., Historical statistics for mineral and material commodities in the United States: U.S. Geological Survey Data Series 140, one CD-ROM. (Also available online at <http://pubs.usgs.gov/ds/2005/140/>.)

(2) If taken from online version:

U.S. Geological Survey, [year of last update, e.g., 2005], [Mineral commodity, e.g., Gold] statistics, *in* Kelly, T.D., and Matos, G.R., comps., Historical statistics for mineral and material commodities in the United States: U.S. Geological Survey Data Series 140, available online at <http://pubs.usgs.gov/ds/2005/140/>. (Accessed [date].)

For more information, please contact:

[USGS Molybdenum Commodity Specialist](#)