



# Landforms Quiz

Match the topographic map with the landform:

\_\_\_\_\_

Alluvial Fan

\_\_\_\_\_

Tombolo

\_\_\_\_\_

Plate Boundary

\_\_\_\_\_

Oxbow Lake

\_\_\_\_\_

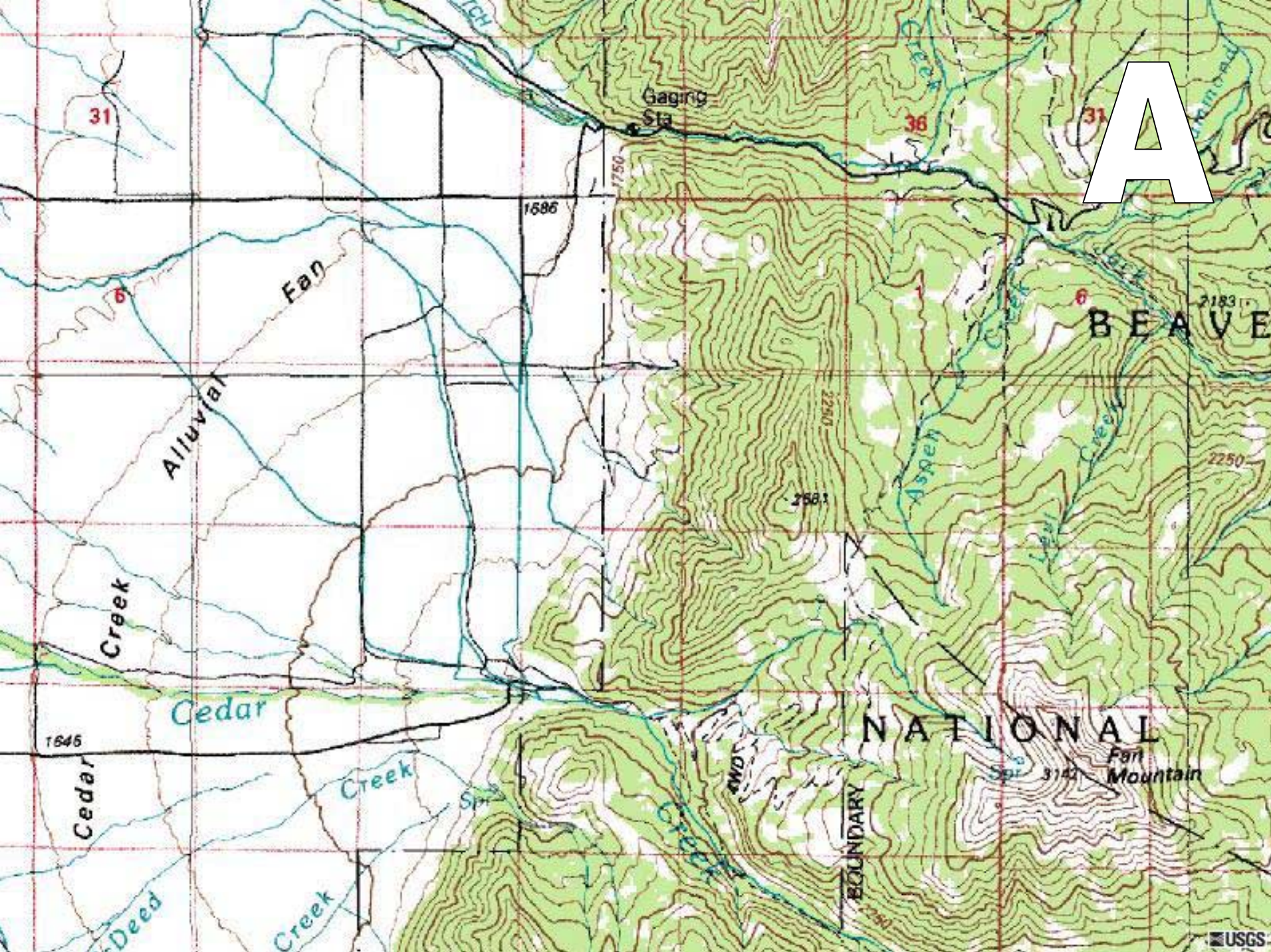
Cinder Cones

\_\_\_\_\_

Karst

\_\_\_\_\_

Glacial Drumlins



A

31

36

31

6

6

2183

BEAVE

2250

2583

1586

1750

2240

1646

NATIONAL

Alluvial Fan Mountain

3142

BOUNDARY

USGS



CERRO DE LA OLLA  
9464

CERRO CHIFTO  
8000

9055

2

3

7800

5000

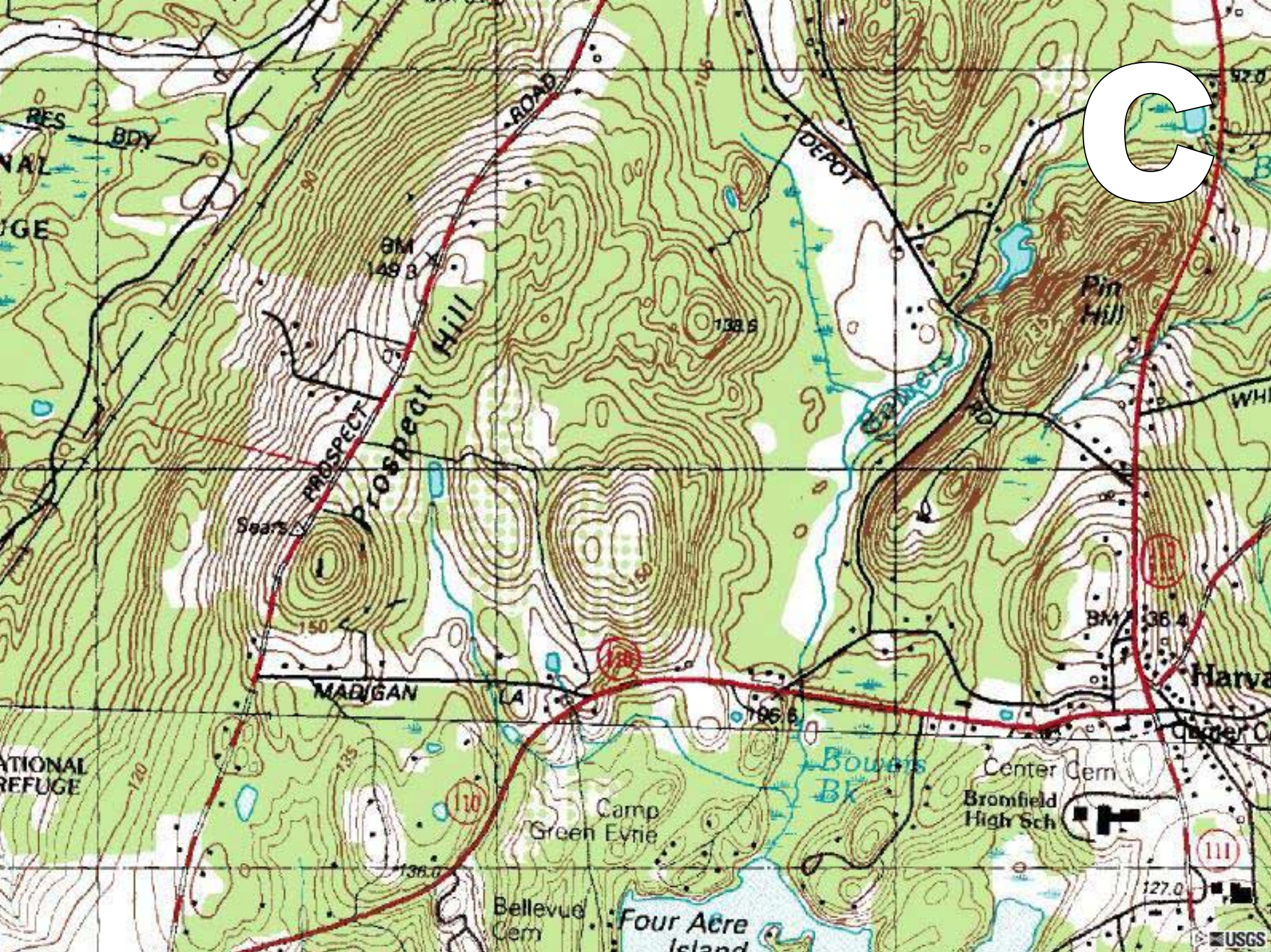
7900

B

GRANDE NATIONAL

Garrapa

USGS



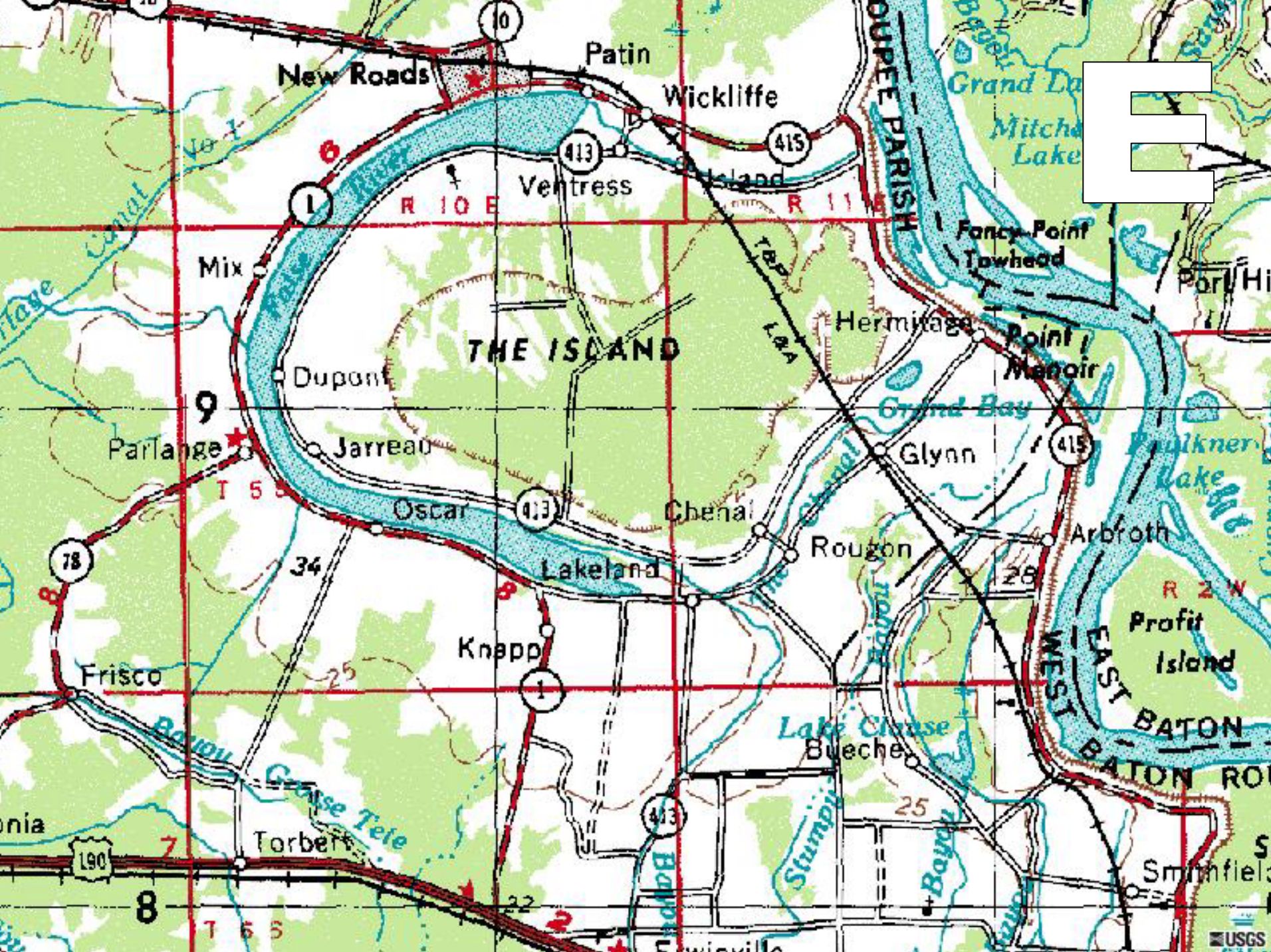
C



D

ET  
ES

USGS

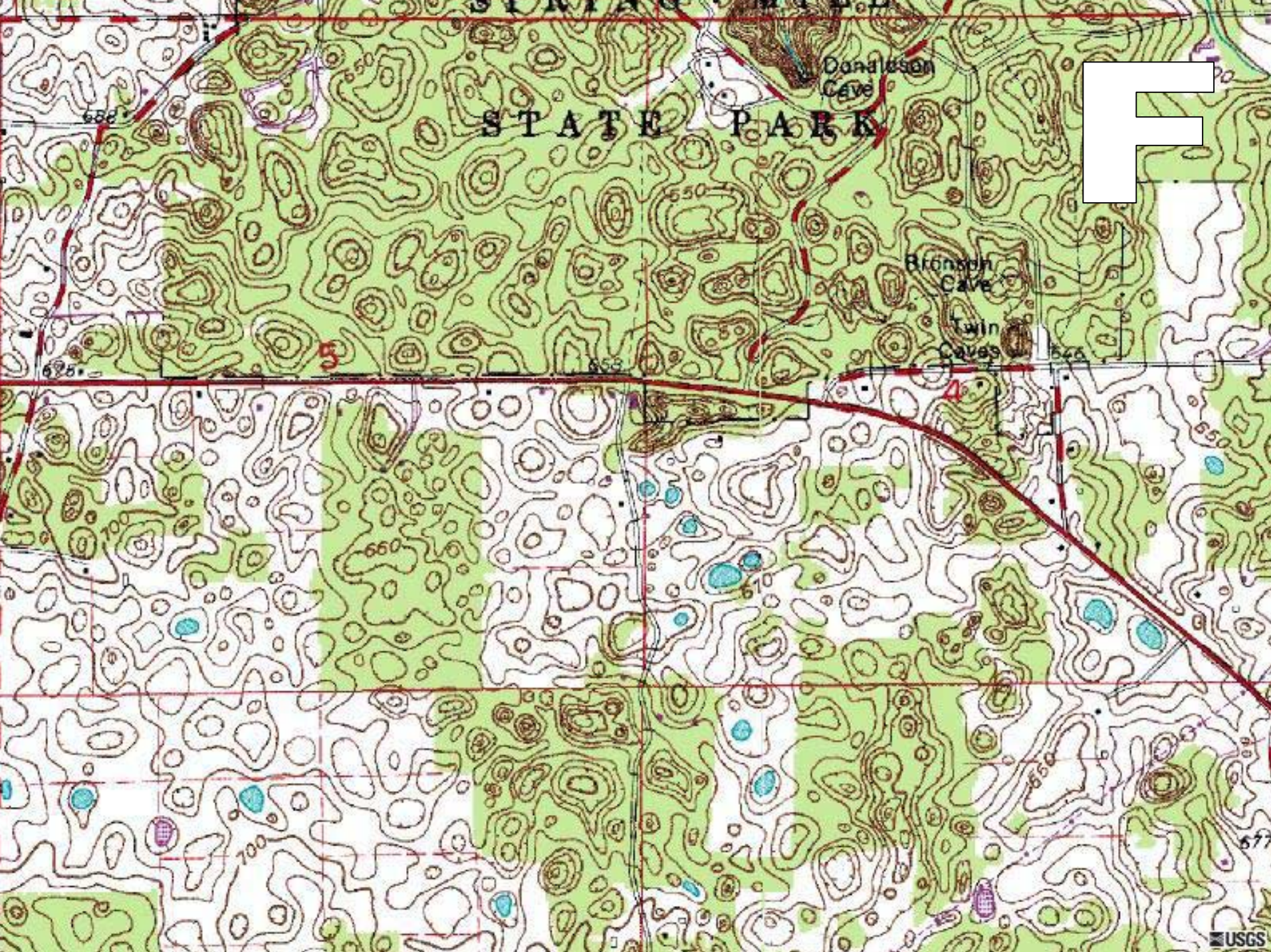


E

**THE ISLAND**

LOUISIANA  
BOUPEE PARISH

WEST BATON  
EAST BATON  
BATON ROUGE



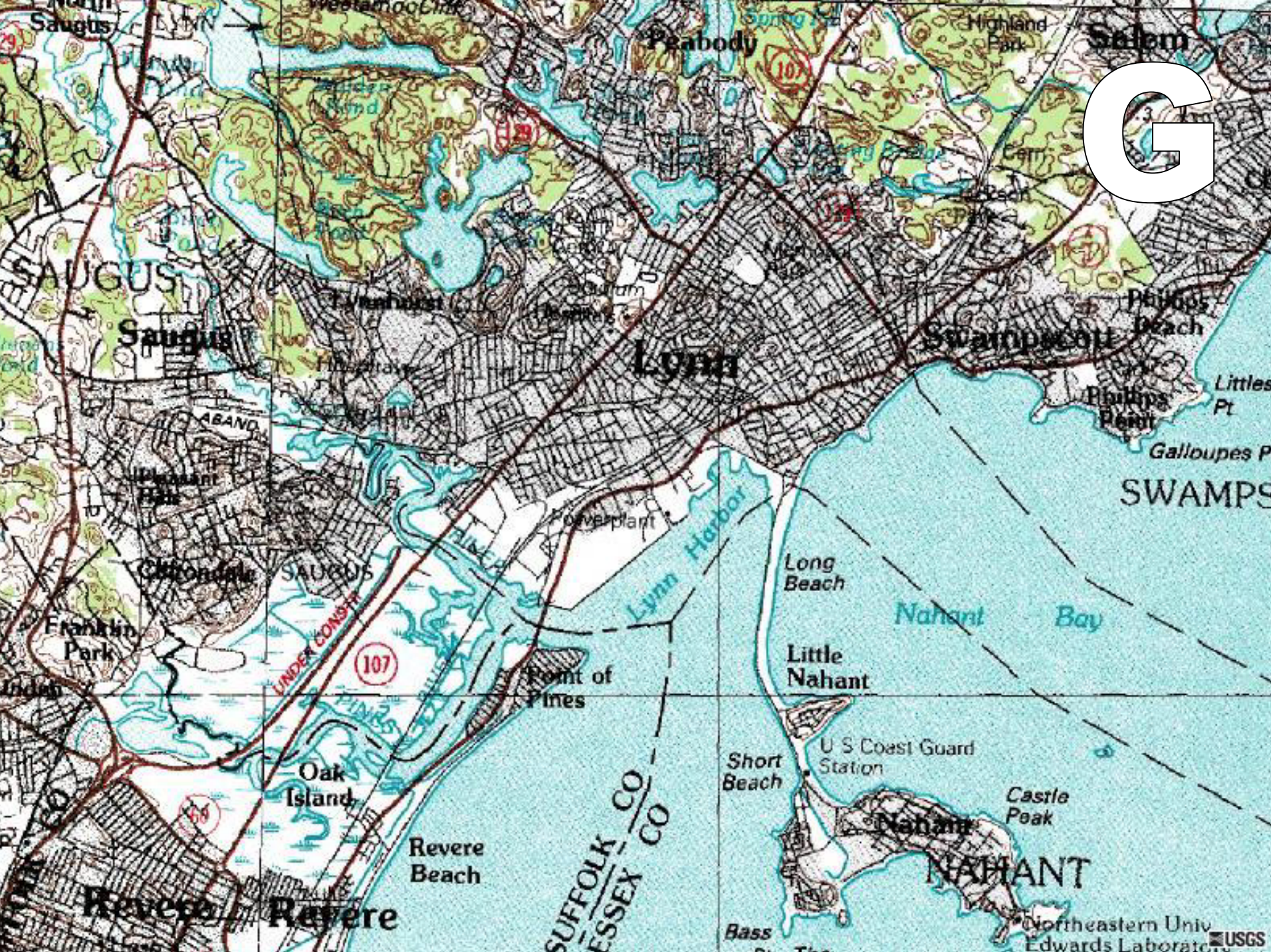
STATE PARK

Donalson  
Cave

Bronson  
Cave

Twin  
Caves

F



G

SWAMPS

NAHANT

USGS





## Landforms Quiz - Answers

Match the topographic map with the landform:

\_\_\_A\_\_\_

Alluvial Fan

\_\_\_G\_\_\_

Tombolo

\_\_\_D\_\_\_

Plate Boundary

\_\_\_E\_\_\_

Oxbow Lake

\_\_\_B\_\_\_

Cinder Cones

\_\_\_F\_\_\_

Karst

\_\_\_C\_\_\_

Glacial Drumlins