

The Panama Canal Expansion Program



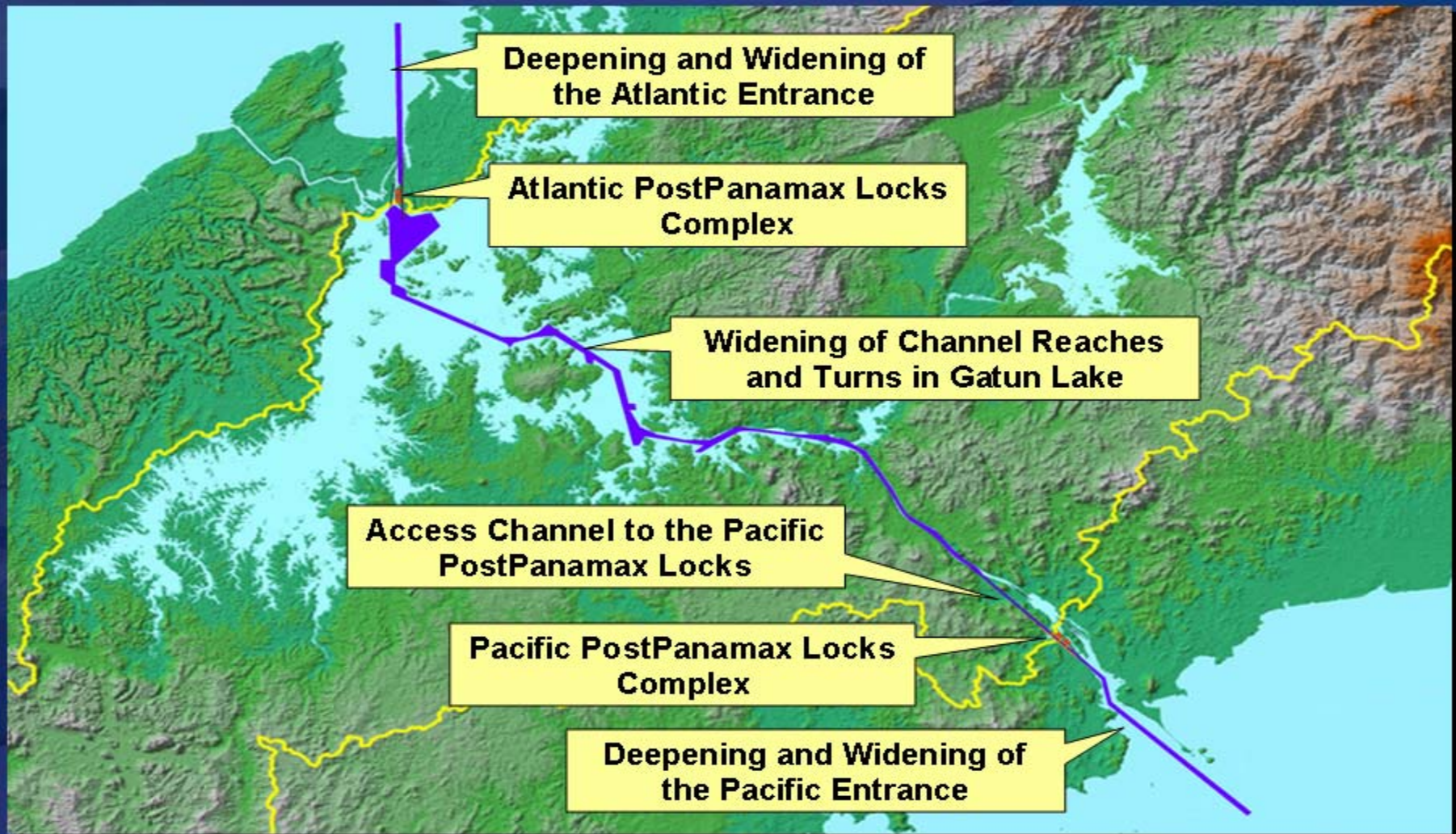
Jorge L. Quijano
Maritime Operations Director
Panama Canal Authority



Panama Canal Expansion Program Info-Conference

- **Presents an opportunity to learn, first hand, about the program components details**
- **Information offered is not legally binding since it is not part of the bid process**
- **Appreciate what Panama has to offer**
- **An opportunity to establish alliances with local service and products providers**
- **Learn about applicable laws**

Program Components



Program Components

Dredging of the Sea Entrance Navigation Channels – Pacific Ocean



Program Components

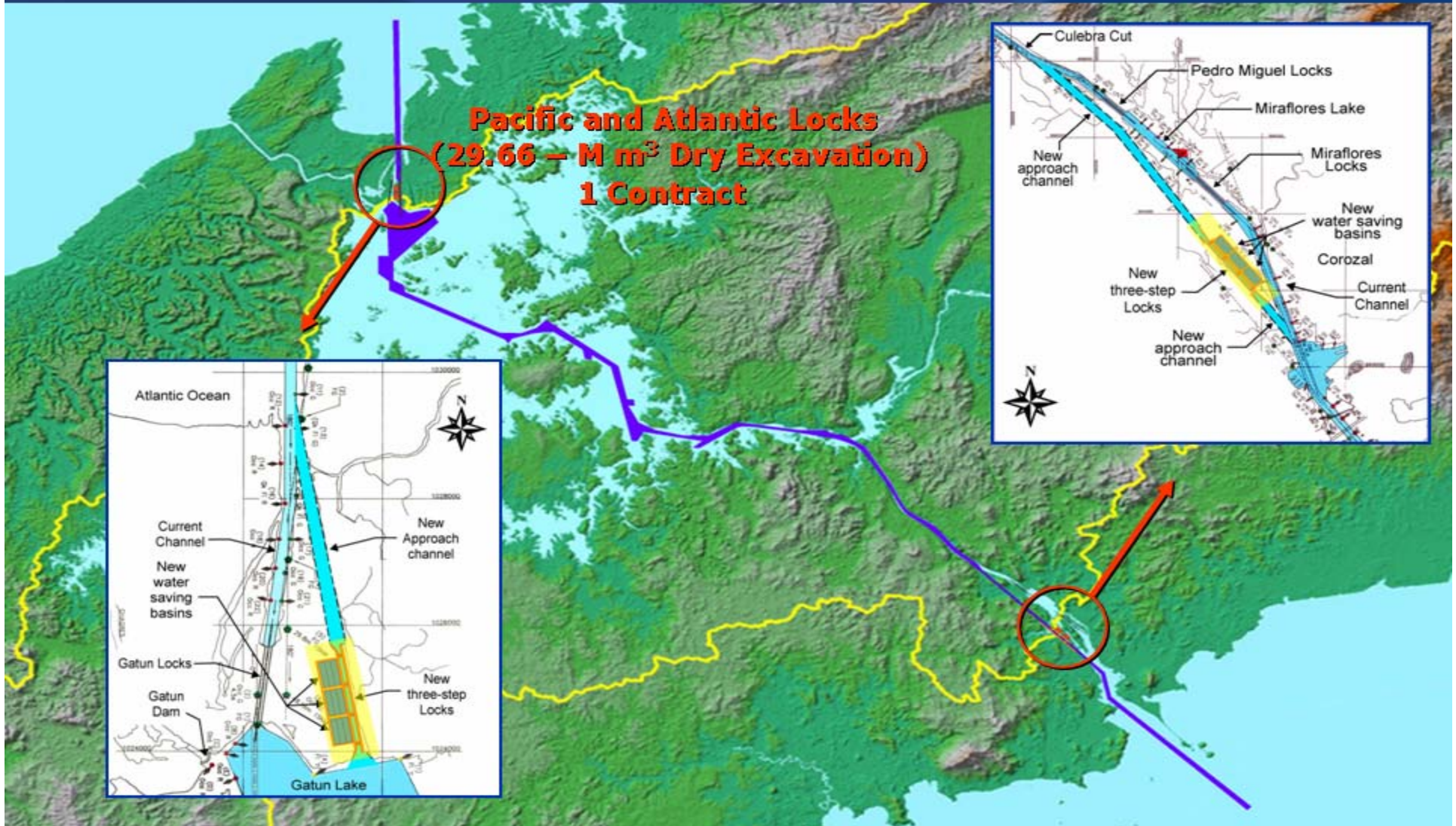
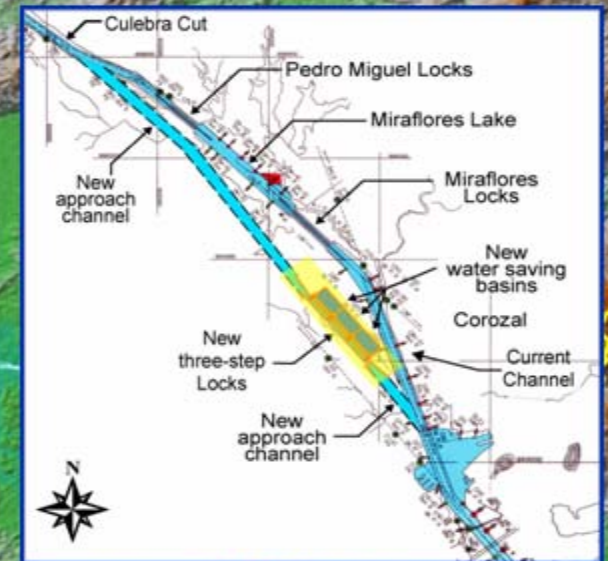
Dredging of the Sea Entrance Navigation Channels – Atlantic Ocean



Program Components

Pospanamax Locks

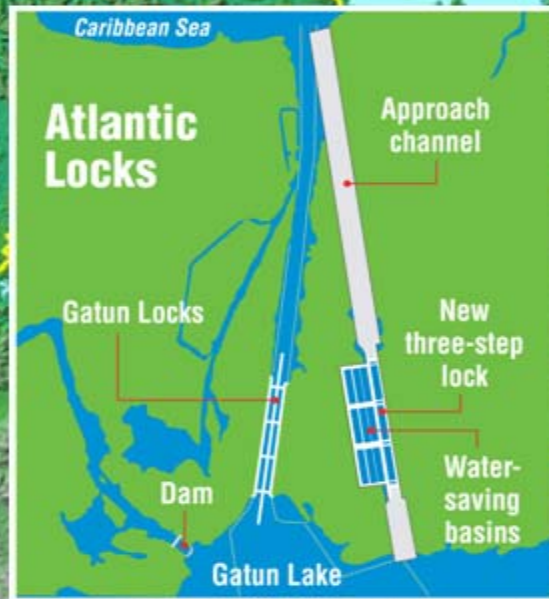
**Pacific and Atlantic Locks
(29.66 – M m³ Dry Excavation)
1 Contract**



Program Components

Pospanamax Locks

Pacific and Atlantic Locks
(29.66 – M m³ Dry Excavation)
1 Contract

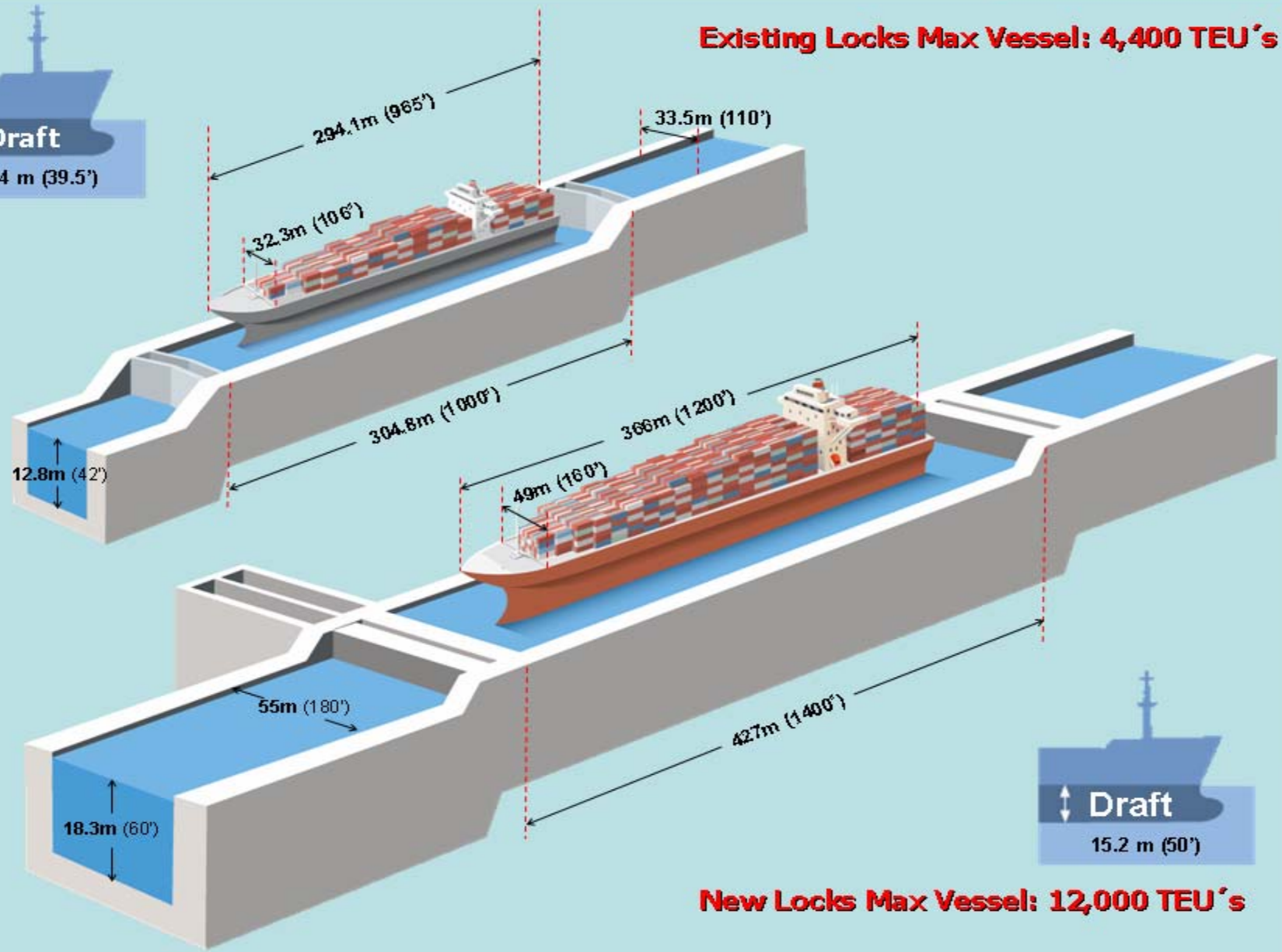


Program Components

Pospanamax Locks



Existing Locks Max Vessel: 4,400 TEU's



New Locks Max Vessel: 12,000 TEU's

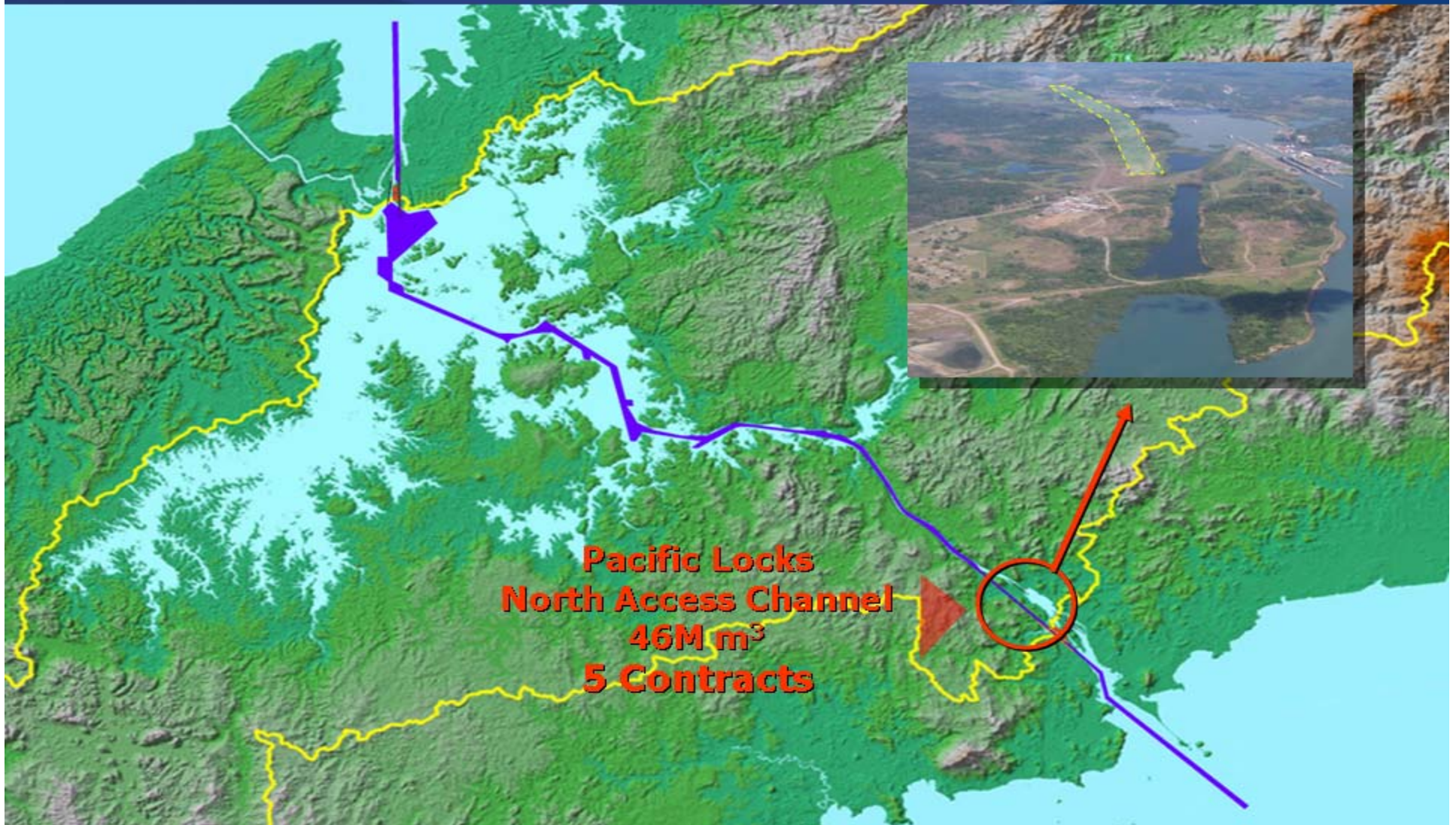
Program Components

Dredging of Gatun Lake and Culebra Cut Navigation Channels



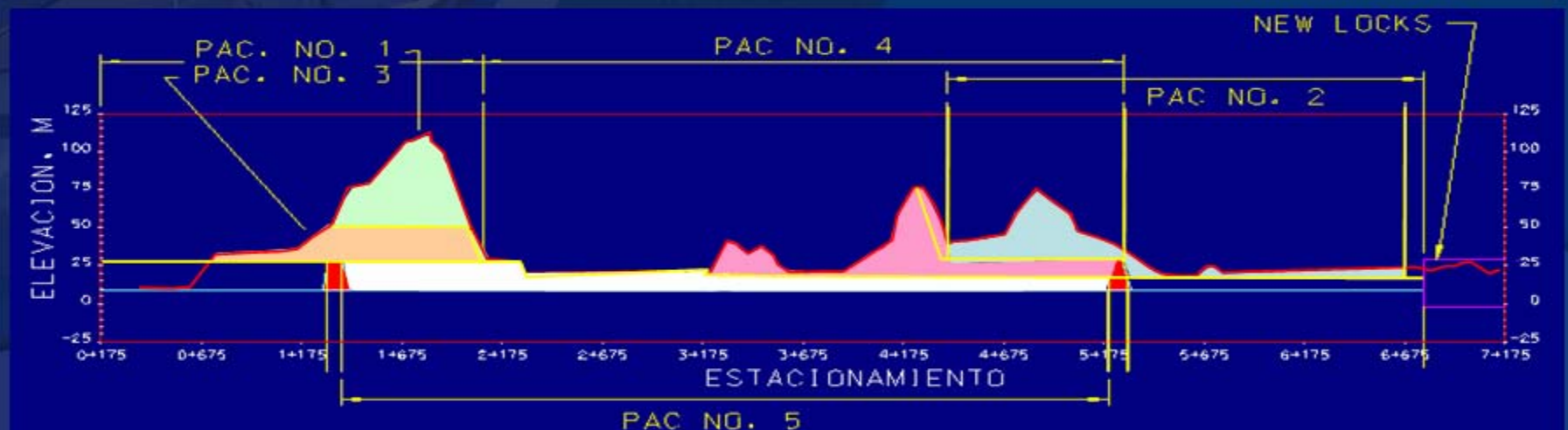
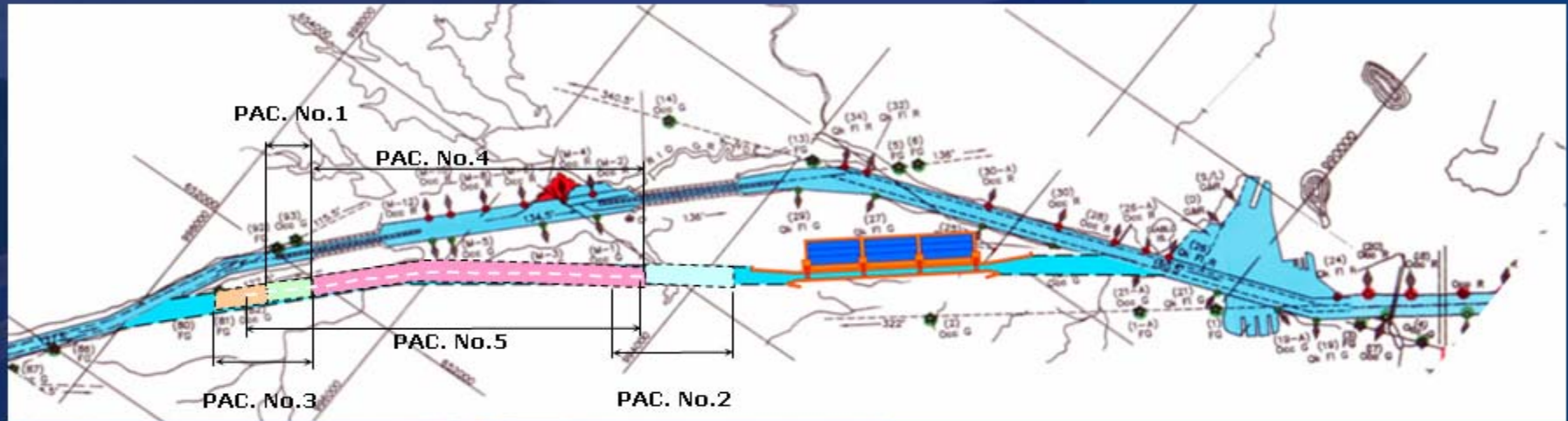
Program Components

Pacific Locks North Access Channel

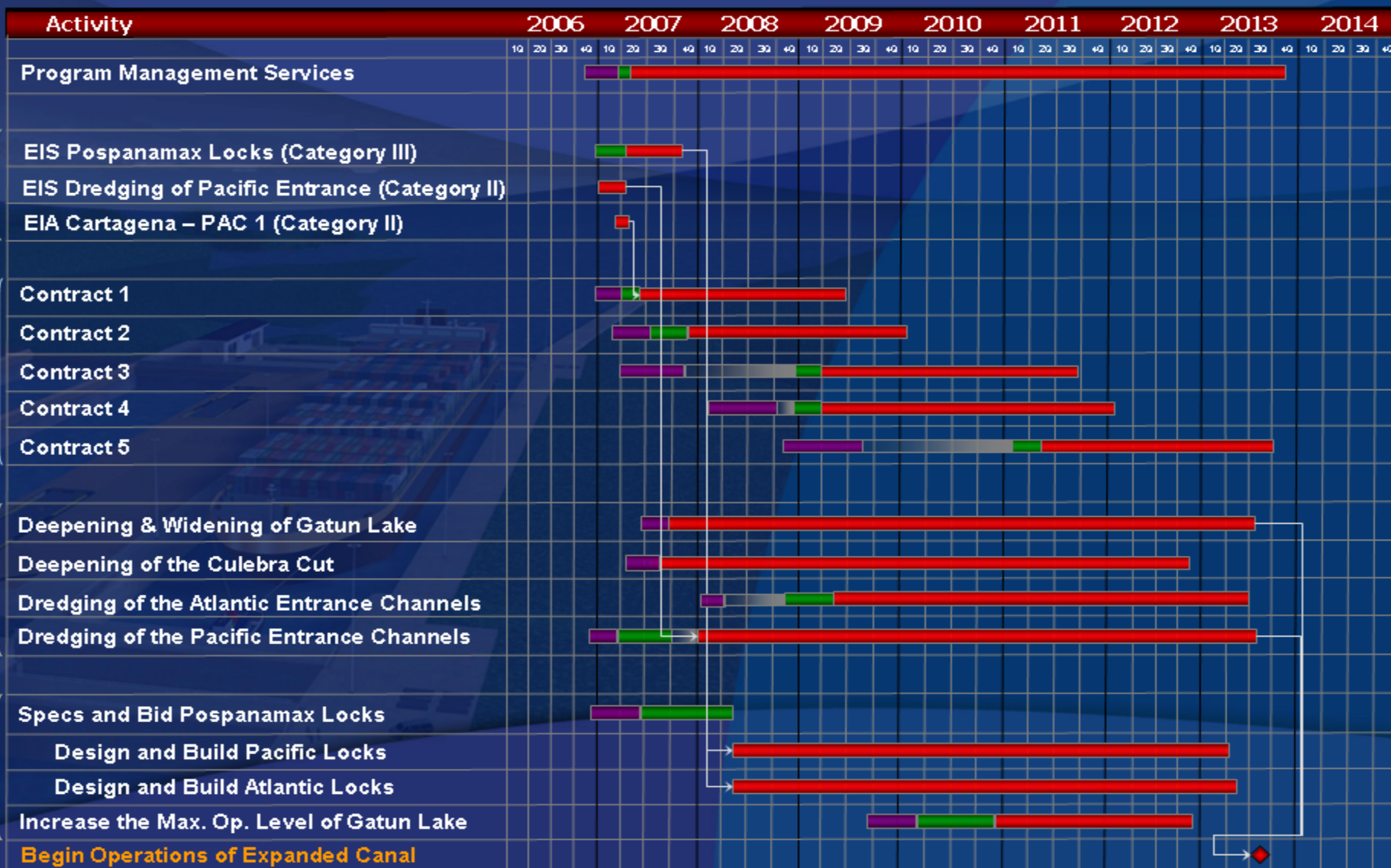


Pacific Access Channel

46M m³ of Dry Excavation - 5 Contracts



Program Schedule



■ Specifications & Design

■ Bidding & Contracting

■ Execution

The Panama Canal Expansion Program



Jorge L. Quijano
Maritime Operations Director
Panama Canal Authority

