

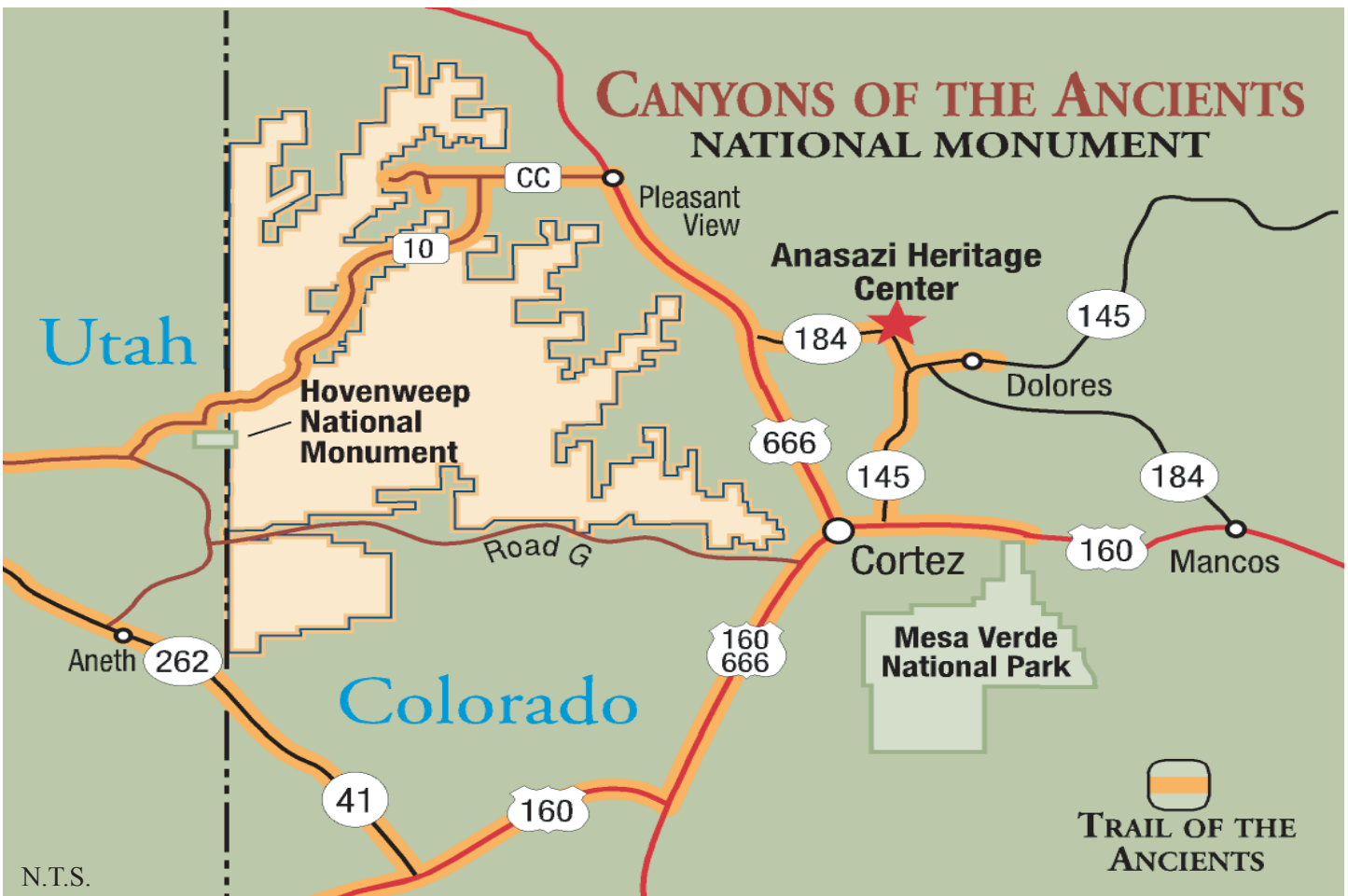
# Canyons of the Ancients National Monument Planning Newsletter #1



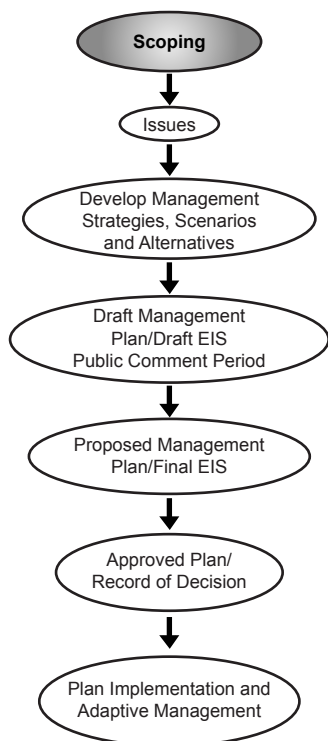
*Canyons of the Ancients National Monument (Monument) is embarking on a multi-year planning process that will result in a resource management plan (plan) for the Monument.* The plan will reflect significant public involvement from interested parties from inside and outside of Colorado, in addition to tribal, state and local governments. The Bureau of Land Management (BLM) is proud to be responsible for administering the Monument, but we need your help. This bulletin informs you about our planning process for the Monument and how you can become involved.

The Monument encompasses 164,000 acres of federal land administered by BLM, identified in the map below. The Monument is located in the Four Corners region of southwest Colorado, about 45 miles west of Durango, 3 miles west of Cortez and 12 miles west of Mesa Verde National Park. The Monument was designated on June 9, 2000 by Presidential Proclamation to protect cultural and natural resources on a landscape scale.

The Monument contains the highest known archaeological site density in the United States, with rich, well-preserved remnants of native cultures. The archaeological record etched into this landscape is much more than isolated islands of architecture. The more than 6,000 recorded sites reflect all the physical components of past human life: villages, field houses, check dams, reservoirs, great kivas, cliff dwellings, shrines, sacred springs, agricultural fields, petroglyphs, and sweat lodges. Some areas have more than 100 sites per square mile. The number of sites is estimated to be 20,000 to 30,000 total.



### Planning Process Overview



## Planning Process Steps

The figure to the left provides an overview of the seven major steps in the planning process. BLM is currently at the beginning of the planning process, in the scoping phase. Some tasks in the process that have been completed to date include publishing a notice of intent in the Federal Register on April 24, 2002 to both prepare the plan and initiate the public scoping process. To assist with the development of the plan, services of the consulting firm Jones & Stokes were procured on September 9, 2002. A project planning meeting was held from November 4-6, 2002 to assemble an interdisciplinary Monument planning team consisting of specialists from BLM, the Forest Service, and Jones & Stokes. On June 6, 2003, in accordance with a directive from the Secretary of the Interior, a Monument Advisory Committee (Committee) was established, and the first Committee meeting was held on July 29, 2003. Lastly, a public participation plan has been completed.



## Planning Process

BLM has been entrusted with management responsibility for this new National Monument. The purpose of the plan is to determine the management approach for the Monument. The primary responsibility of the plan is to provide protection for the values for which the Monument was created. It will stress management objectives, identify areas where different types of opportunities and experiences are available, and establish management standards and guidelines for specific program areas. The plan will be completed under the authority of the Federal Land Policy and Management Act (FLPMA) and will be accompanied by an environmental impact statement (EIS) that will comply with National Environmental Policy Act (NEPA) standards. The plan will also be completed in compliance with other applicable laws. The plan will emphasize the scientific resources of the Monument and identify opportunities and priorities for scientific research and educational opportunities related to the values for which the Monument was created.

## Monument Advisory Committee

The purpose of the Committee is to advise the Secretary of the Interior and BLM on the development and implementation of the plan for the Monument. With this purpose in mind, the Committee will, among other things, gather and analyze information; conduct studies and field examinations; hear public testimony; advise BLM in establishing Monument resource management priorities and landscape goals and objectives; develop recommendations for implementation of ecosystem approaches to management within the Monument; and achieve collaborative approaches to Monument management.

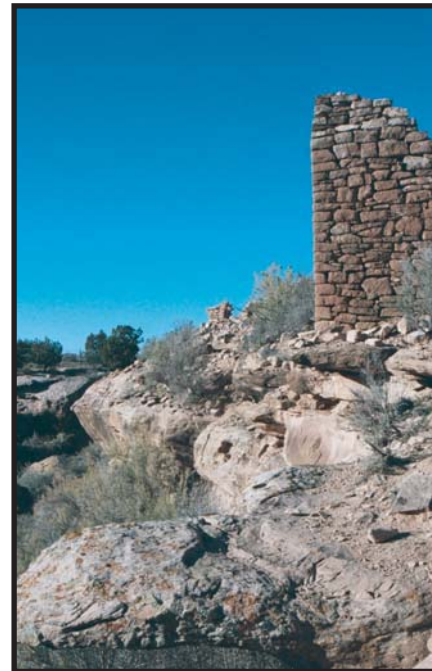
As noted, the first Committee meeting was held on July 29, 2003. Upcoming Committee meetings include the following:

Date	Location	Time
October 21, 2003	Anasazi Heritage Center Dolores, Colorado	9:00 am to 3:30 pm
November 14, 2003	Anasazi Heritage Center Dolores, Colorado	9:00 am to 3:30 pm

## Committee Members

The Committee consists of 11 members living in, or within reasonable proximity to, southwest Colorado. They were selected based on their knowledge and special expertise in the category of interest they were nominated for, and will serve for four years. The 11 Committee members and the category of interest they represent are as follows:

- Montezuma County Commission Representative - Glenn (Kelly) Wilson;
- Dolores County Commission Representative - Duane Gerren;
- Two Tribal/Pueblo Representatives - Tito Naranjo and Selwyn Whiteskunk;
- Two Cultural Resources Representatives - William Lipe and Mark Varien;
- Livestock Grazing Permitted in the Monument Representative - Chris Majors;
- Fluid Minerals Development Representative - Robert Clayton; and
- Three people representing any of the following:  
Private landowners in or adjacent to the Monument, recognized national or regional environmental or resource conservation organizations, off-road vehicle use, commercial recreation, and/or representing statewide perspectives with no financial interest in the Monument - Elizabeth Tozer, Chuck McAfee, and Howard Poe.



## Public Involvement in the Planning Process

At present, work on a variety of initial planning tasks continues, including the formal scoping process. “Scoping” is a term from NEPA that describes the process by which federal agencies ask the public for help in determining the "scope" of issues to be addressed in the planning process. For several months, BLM has been soliciting ideas and comments about the Monument through the mail and the Internet. To further ensure a collaborative planning process, BLM has scheduled three public scoping workshops at the locations listed below. These meetings will provide further opportunity for public involvement and comment.

Date	Location	Time
October 21, 2003	Koko’s Conference Center at 2121 East Main, Cortez, CO	6:30 pm
October 22, 2003	Durango Community Recreation Center at 2700 Main Avenue, Durango, CO	6:30 pm
October 29, 2003	Holiday Inn Denver West at 14707 West Colfax Avenue, Golden, CO	6:30 pm

## Scoping Comment Submittal

Written scoping comments can be submitted to: Monument Planner, Canyons of the Ancients National Monument, 27501 Highway 184, Dolores, Colorado 81323, or faxed to 970-882-7035 or emailed to: Colorado\_CanmScoping@co.blm.gov. Scoping comments can also be submitted by completing and mailing the inserted Scoping Worksheet. The deadline for submitting comments for the formal “scoping” process is November 28, 2003. Comments mailed should be postmarked on or before this date. Comments submitted on or before this deadline will be most useful to the Monument during the development of plan alternatives, and will be incorporated into the Scoping Report. However, comments, suggestions and ideas will continue to be accepted and processed throughout the planning process. □

## Collaborative Efforts

Our commitment to developing an interactive and dynamic planning process which involves input from the widest possible area has led to meetings with many individuals and groups. In order to foster this collaboration, team members continue to meet with interested groups and individuals. Some of the groups with which the team has met or is in contact include: Colorado Historical Society, Colorado Department of Natural Resources, Montezuma and Dolores Counties, Native American tribes, USDA Forest Service, National Parks Service, U.S. Fish & Wildlife Service and others.

## How You Can Be Involved

If you received this planning newsletter by mail or email, you are currently on the Monument mailing list. As a result, you will continue to receive future planning newsletters. If you did not receive this planning newsletter by mail or email, you are not on the Monument mailing list. To add or remove your name from this list complete the contact information located on the inserted Scoping Worksheet, and follow the directions for mailing it to the Monument. If you live in Colorado, please watch and listen for announcements in the local papers and on the local radio stations. While the planning team welcomes your comments and suggestions at all times, please remember that your input is particularly important in the early stages of the planning process, (e.g. scoping).

## Planning Process Schedule

The proposed schedule for producing the major documents during the planning process is as follows:

<b>Planning Document</b>	<b>Estimated Date of Availability</b>
Preparation Plan	January 2001
Analysis of the Management Situation	February 2004
Scoping Report	February 2004
Draft RMP/EIS	October 2004
Proposed RMP/Final EIS	June 2005
Approved RMP/Record of Decision	September 2005

Bureau of Land Management  
Anasazi Heritage Center  
27501 Colorado Highway 184  
Dolores, CO 81323

PRESORTED  
FIRST-CLASS MAIL  
POSTAGE AND FEE PAID  
U.S. DEPARTMENT OF THE INTERIOR  
PERMIT NO. G-76

## How You Can Remain Informed

If you have access to the Internet, you can follow the progress of the planning process on the Monument's *NEW* planning website at [www.blm.gov/rmp/canm](http://www.blm.gov/rmp/canm). Our dedicated website offers another avenue to submit comments electronically and view and download geospatial data. The site also offers a complete listing of scheduled public meetings and Committee meetings (also open to the public), in addition to other items such as text of the Presidential Proclamation, Interim Guidance, and the Preparation Plan.

Thank you for your interest in this important process. We look forward to working with you. For further information, please contact:

Steve Kandell, Monument Planner  
970/882-5600  
[www.blm.gov/rmp/canm](http://www.blm.gov/rmp/canm) (Monument planning website)  
[www.co.blm.gov/canm](http://www.co.blm.gov/canm) (Monument website)

Canyons of the Ancients National Monument  
27501 Colorado Highway 184  
Dolores, CO 81323

Place  
Stamp  
Here

Canyons of the Ancients National Monument  
Attn: Steve Kandell  
27501 Colorado Highway 184  
Dolores, CO 81323

---

## Canyons of the Ancients National Monument Scoping Worksheet

---

Consider the questions on the reverse side of this page, then write down your thoughts about the future management of Canyons of the Ancients National Monument (Monument). Responses to these questions will be used during the development of plan alternatives.

Attach additional pages if necessary. Once you have completed the worksheet, fold, tape, and mail by November 28, 2003.

Public comments, including names and street addresses of respondents, will be available for public review during regular business hours (7:30 a.m. to

4:15 p.m.), Monday through Friday, except holidays at the

Anasazi Heritage Center  
27501 Colorado Highway 184  
Dolores, CO 81323

Individual respondents may request confidentiality. If you wish to withhold your name or address from public review or from disclosure under the Freedom of Information Act, you must state this prominently at the end of your comments. Such requests will be honored to the extent allowed by law. Comments from organizations or businesses will be made available for inspection in their entirety.

# Resource Management Plan for the Canyons of the Ancients National Monument Scoping Worksheet

1. What do you value about the Monument and why?

---

---

---

---

---

---

---

---

4. How would you like to see the Monument's scientific, traditional, recreational, cultural, natural, and other resources managed?

---

---

---

---

---

---

---

---

2. What activities or uses on the Monument are important to you and why?

---

---

---

---

---

---

---

---

5. Is there anything else you want to tell us?

---

---

---

---

---

---

---

---

3. What concerns or problems would have to be resolved before your vision of the Monument could be fulfilled?

---

---

---

---

If you would like to receive information related to the Monument's resource management planning process, please identify the type of planning newsletter you would like to receive when they become available and complete the contact information below.

Planning Newsletter     Hard Copy     Digital Copy

Name: \_\_\_\_\_  Add my name to the mailing list

Address: \_\_\_\_\_  Note corrections to my name or address

Email address: \_\_\_\_\_  Remove my name from the mailing list

Organization/Title (if applicable): \_\_\_\_\_  Withhold my name and address from public review

To make comments electronically, please email us at [colorado\\_canmscoping@co.blm.gov](mailto:colorado_canmscoping@co.blm.gov). For more information on the Monument planning process, visit our planning web site at [www.blm.gov/rmp/canm](http://www.blm.gov/rmp/canm). Thank you for your interest in planning the future of the Monument.