

PANAMA CANAL EXPANSION PROGRAM

REQUEST FOR QUALIFICATIONS
FOR THE DESIGN-BUILD OF THE THIRD SET OF LOCKS PROJECT



JORGE L. QUIJANO
ENGINEERING AND
PROGRAMS MANAGEMENT DEPARTMENT
PANAMA CANAL AUTHORITY
13 SEPTEMBER 2007



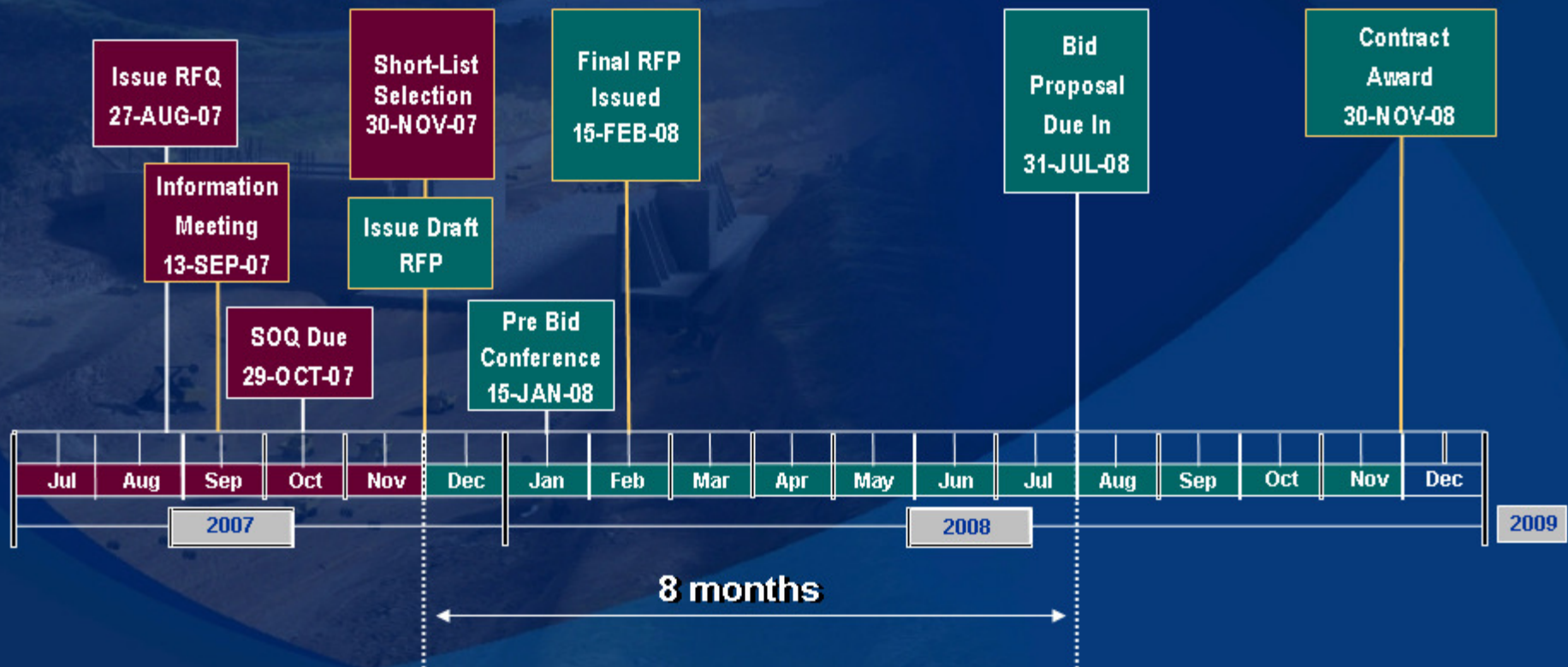
Agenda

- **Program Manager**
- **Procurement Schedule**
- **Principal elements of the Expansion Program**
- **Program Timeline**
- **Training Programs**

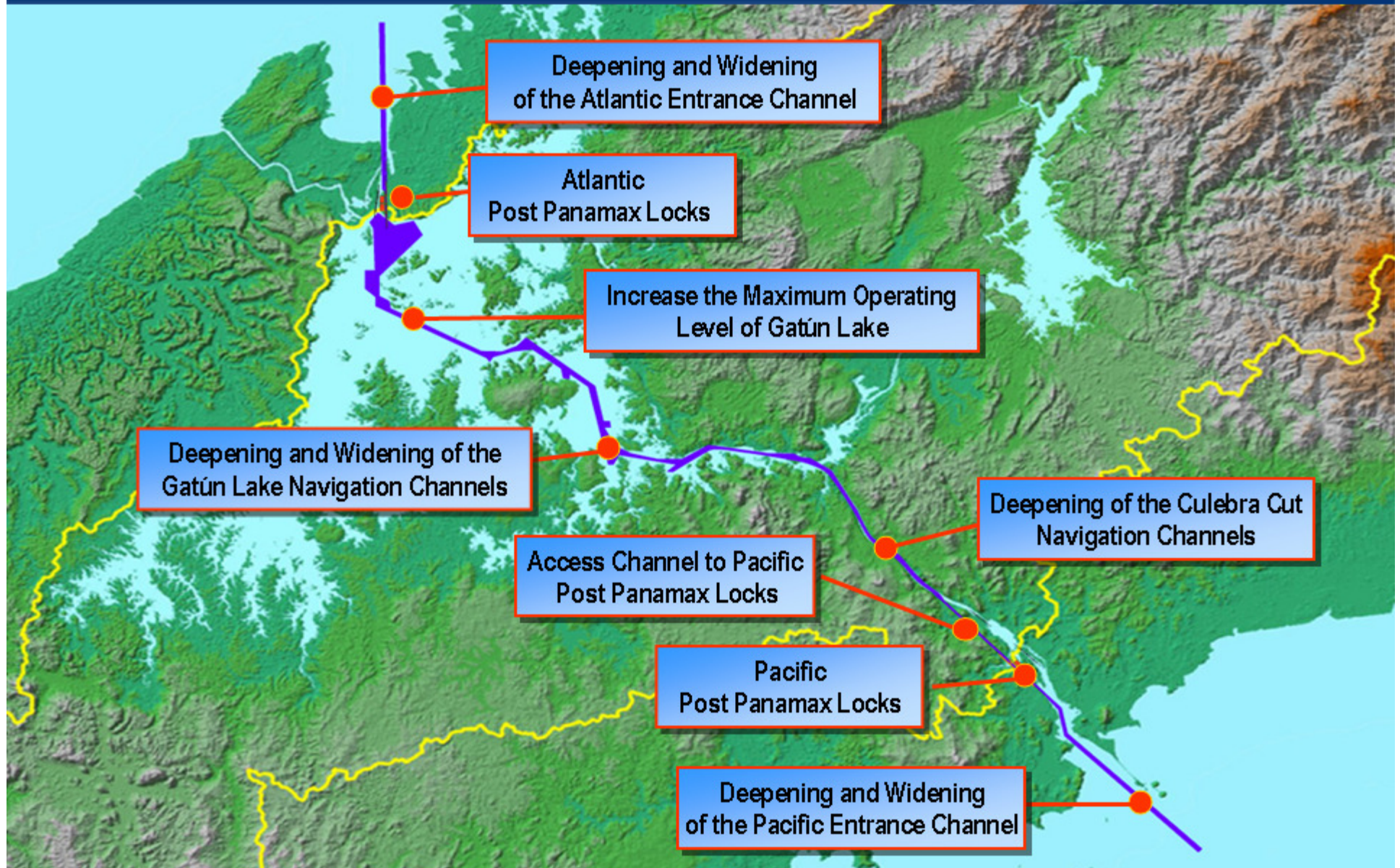


CH2MHILL

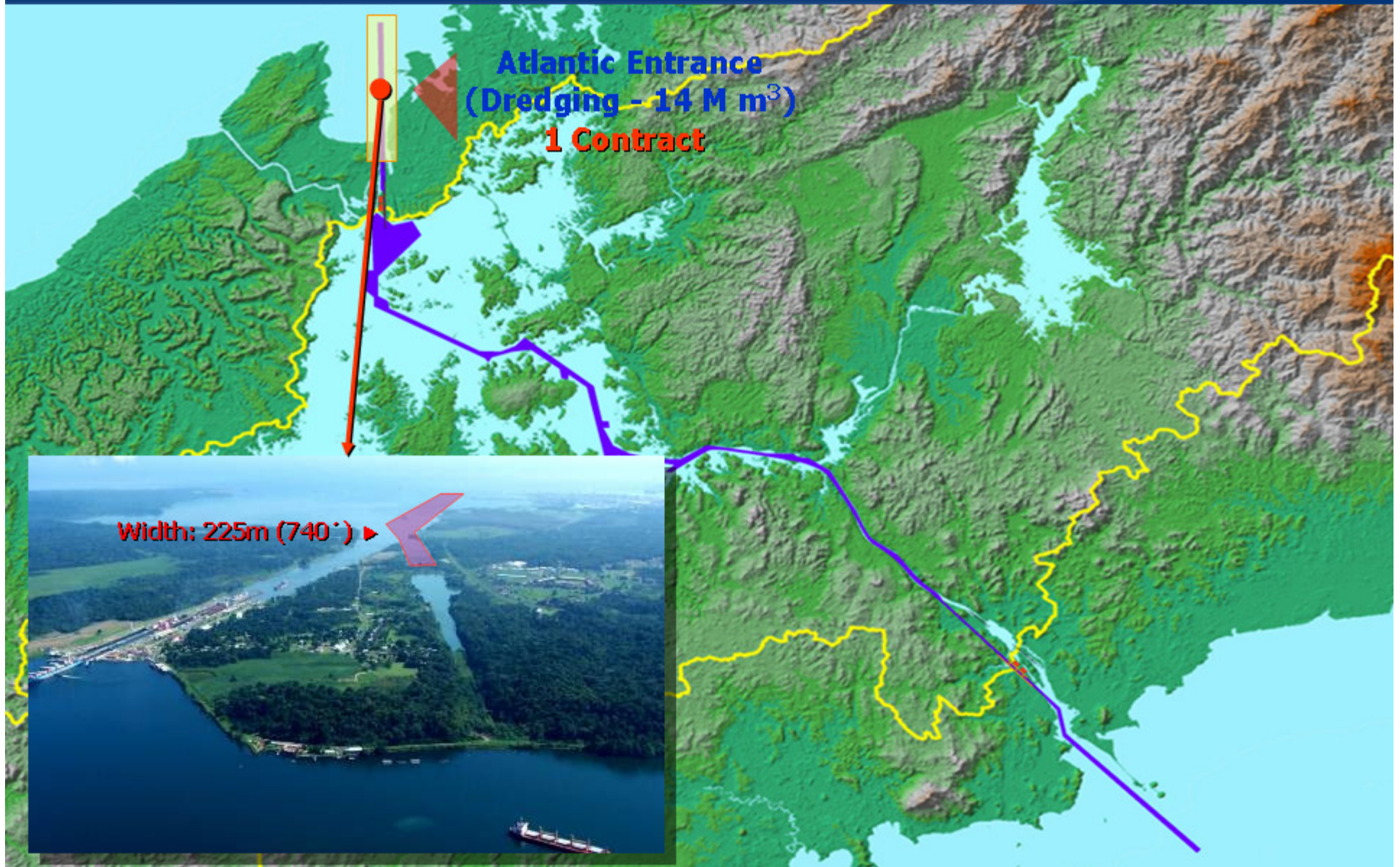
Locks Design-Build Project Procurement Schedule



Canal Expansion Program Components

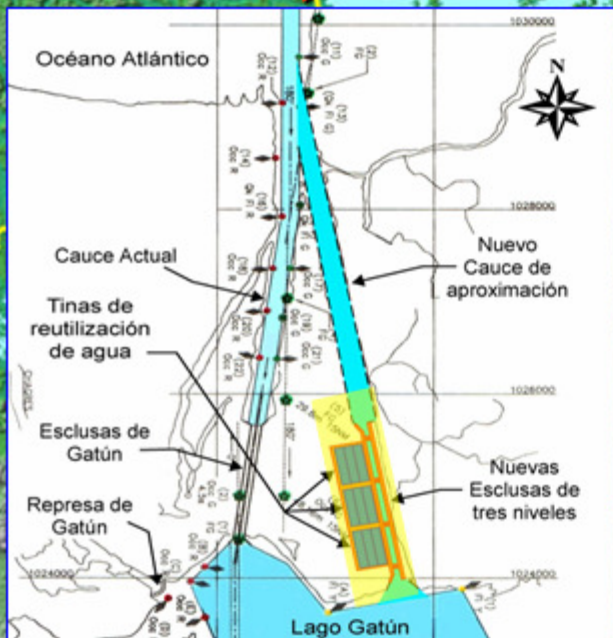


Atlantic Entrance Deepening and Widening



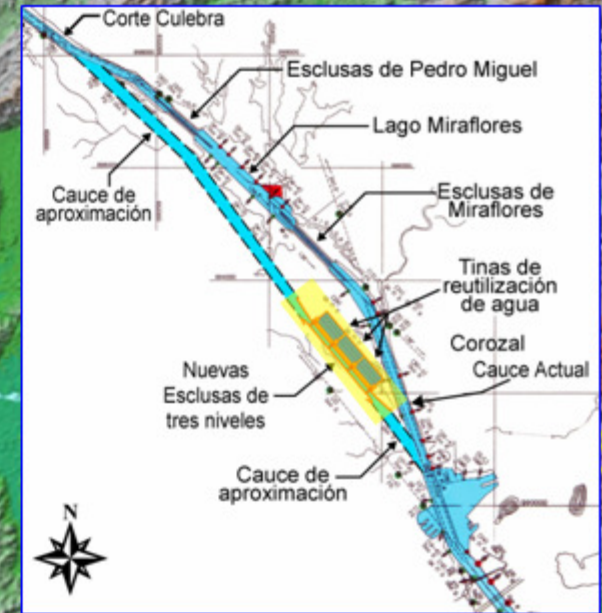
Post Panamax Locks

Atlantic and Pacific Locks
(30 M m³ Dry Excavation)
1 Contract



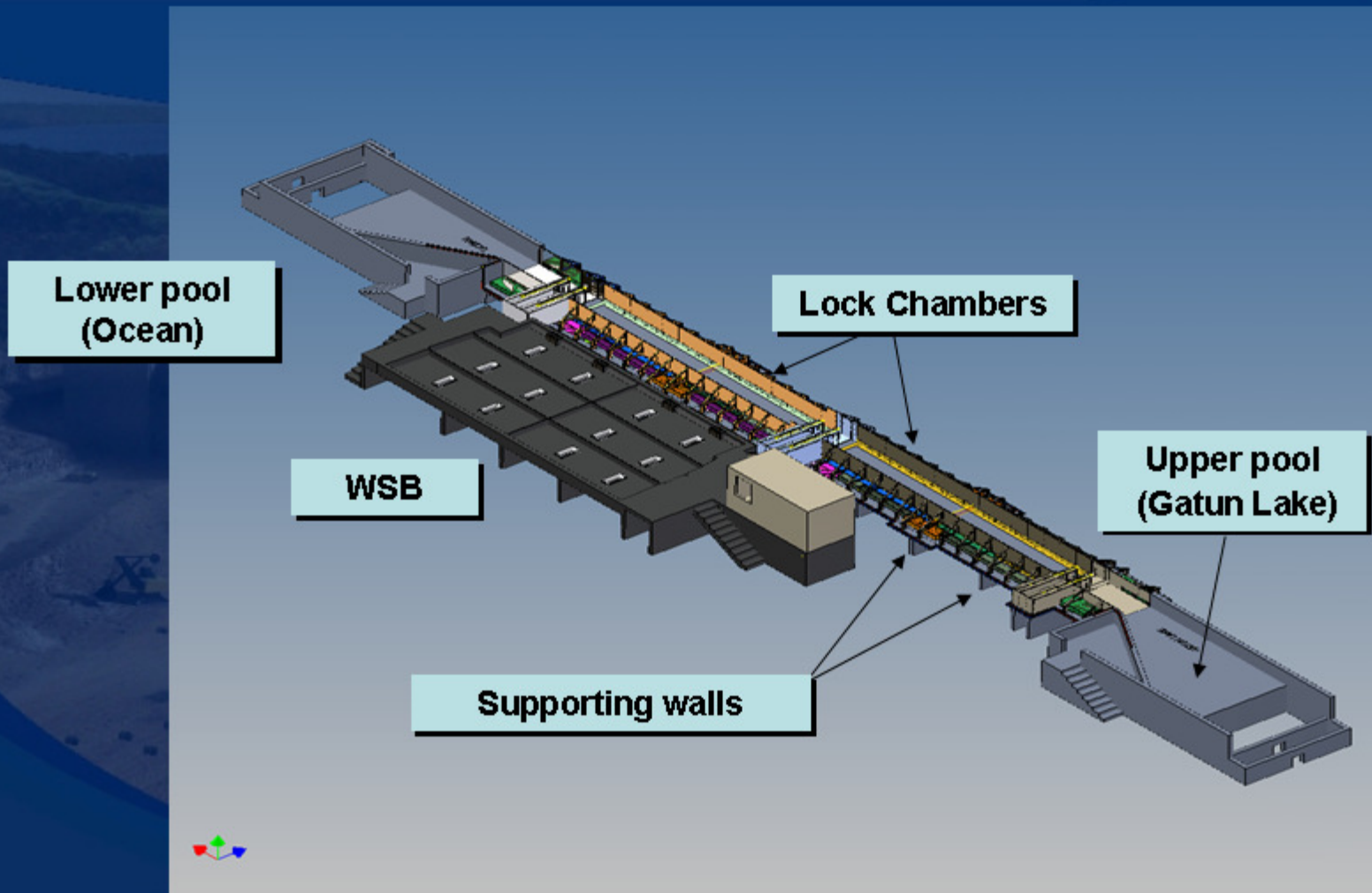
Post Panamax Locks

Atlantic and Pacific Locks
(30 M m³ Dry Excavation)
1 Contract



Locks Physical Hydraulic Model

1:30 Scale

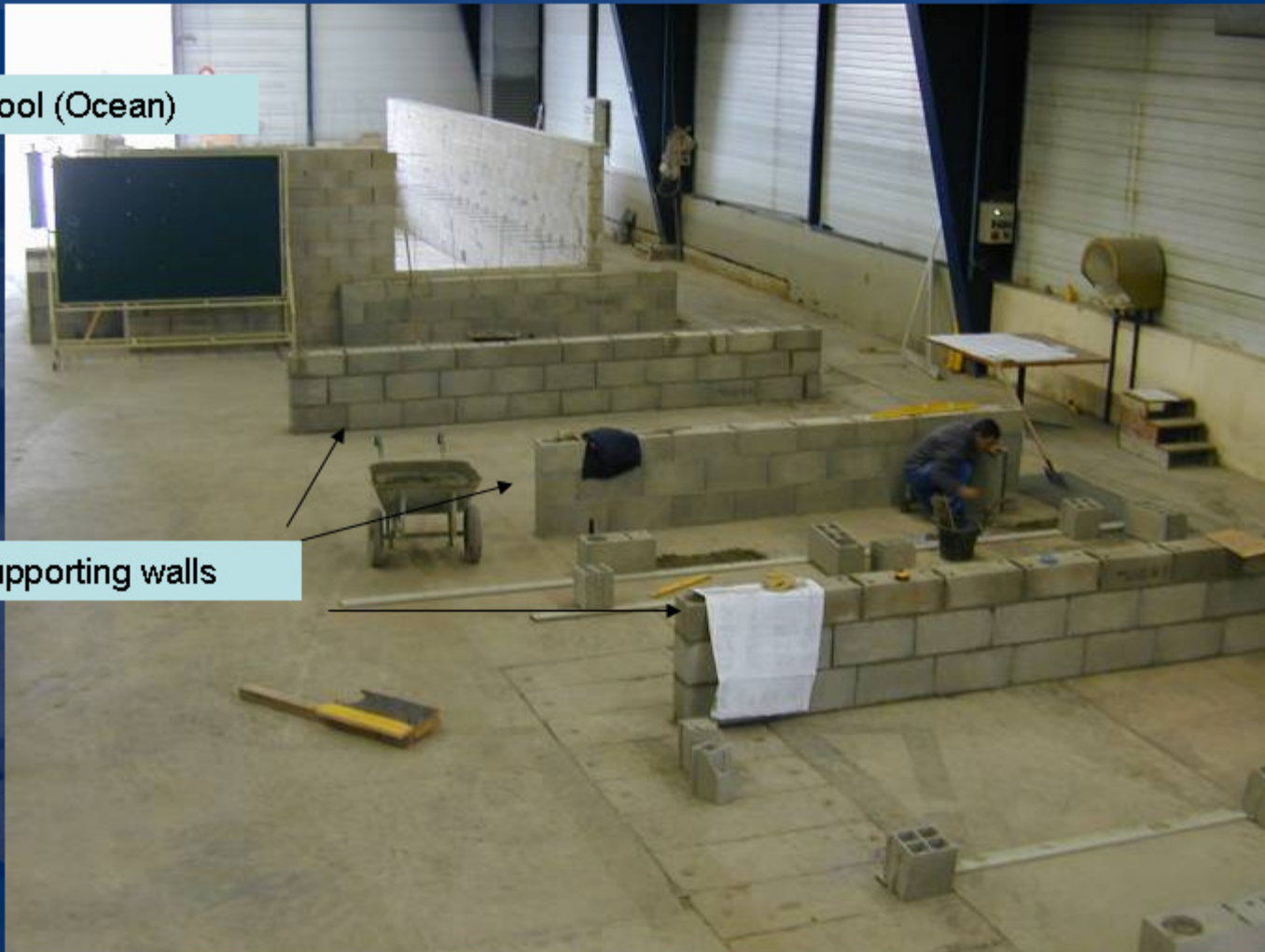


3D Concept drawing of the physical model

Locks Physical Hydraulic Model

Lower pool (Ocean)

Supporting walls



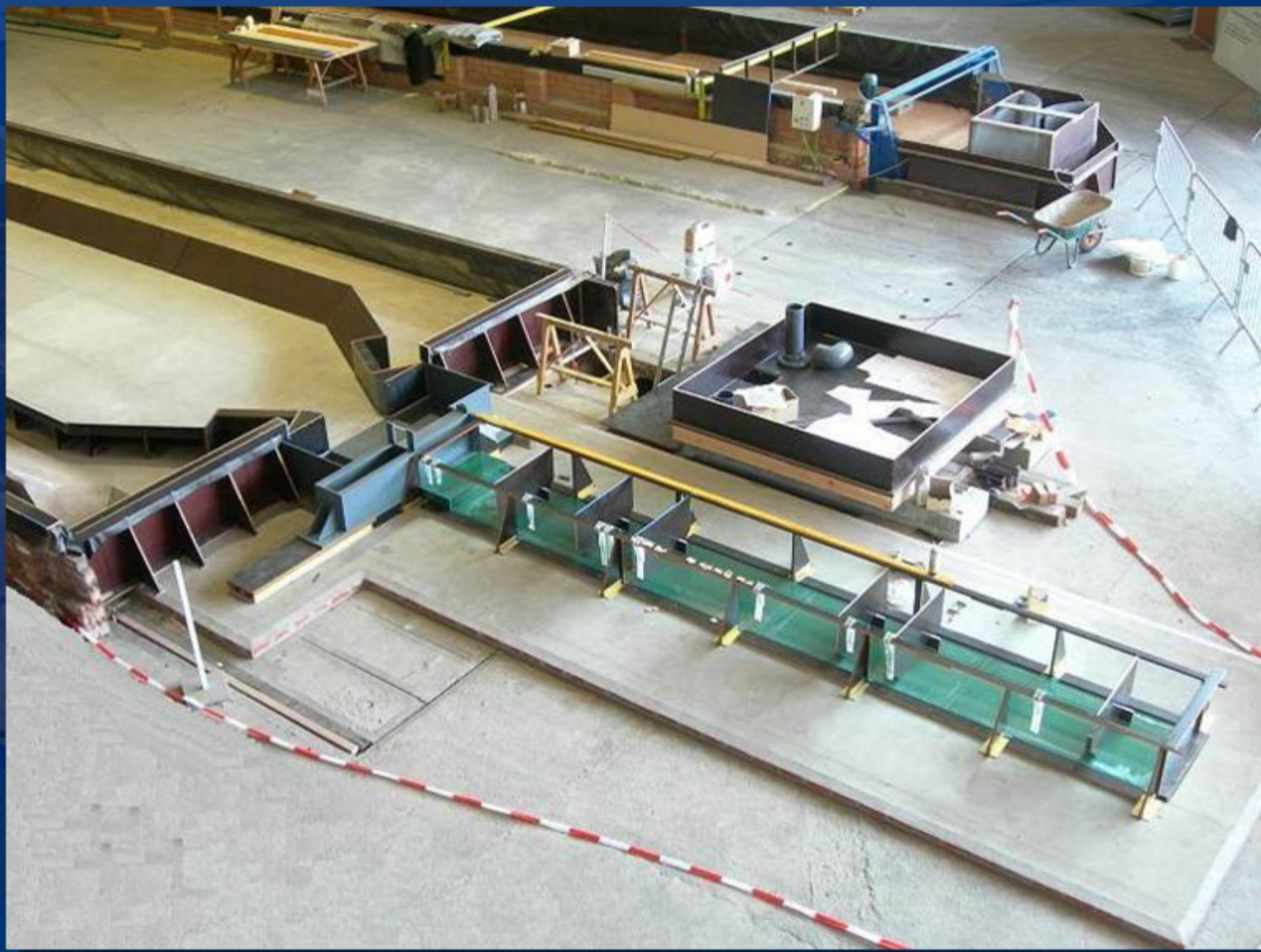
View of the lower pool & supporting walls

Tank Test Model

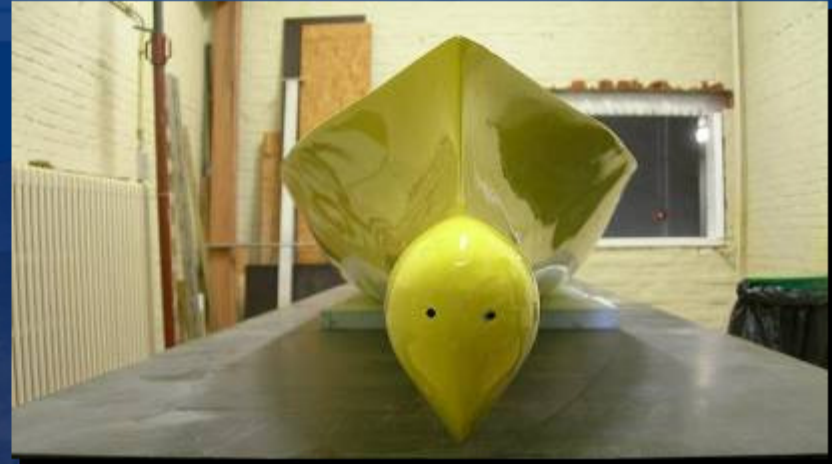
1:80 Scale



Tank Test Model



Tank Test Vessel Model



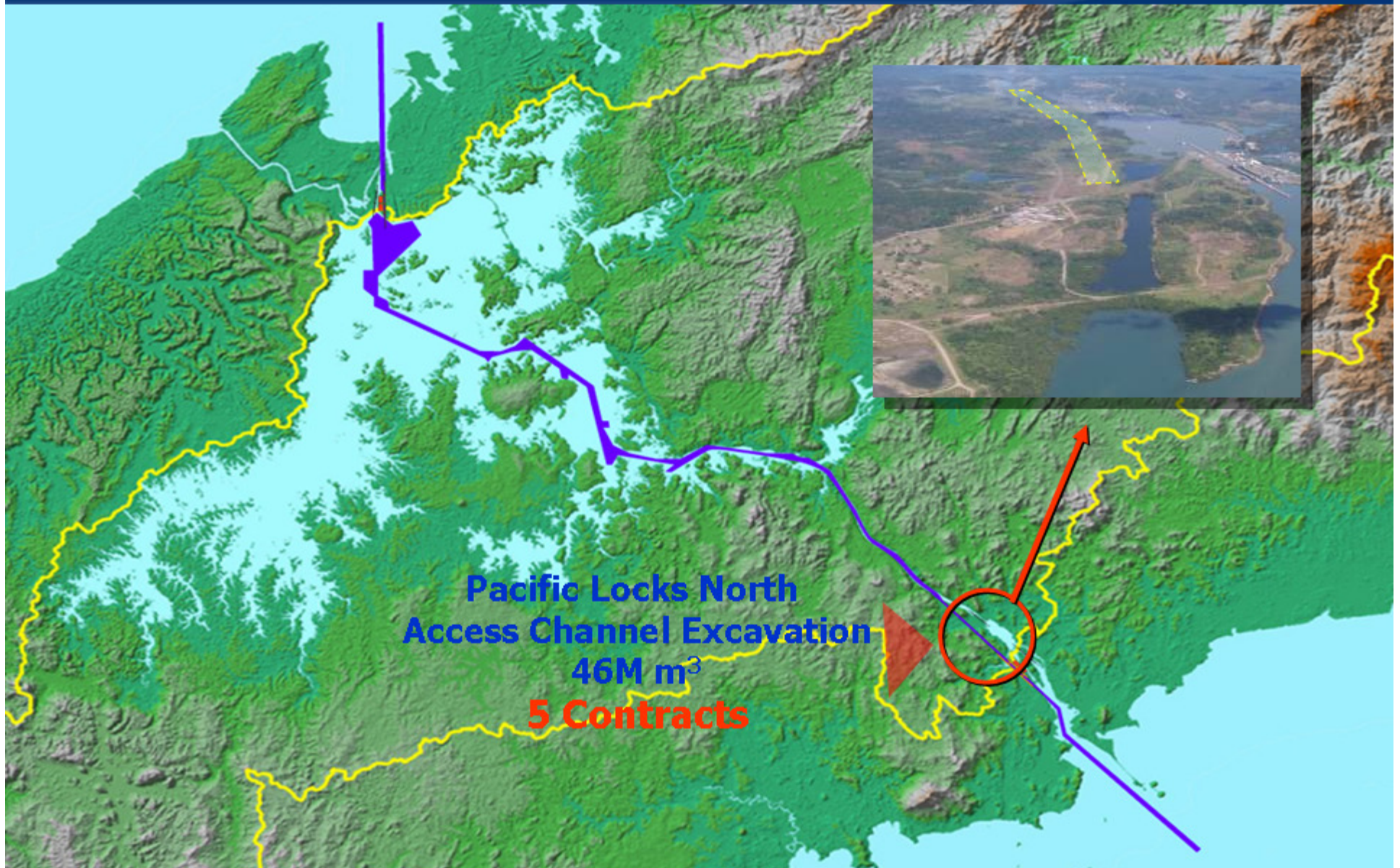
Gatun Lake and Culebra Cut Deepening and Widening

Deepening and Widening
of the Gatun Lake and
Culebra Cut Navigation Channels
(Dredging - 27 M m³)

ACP

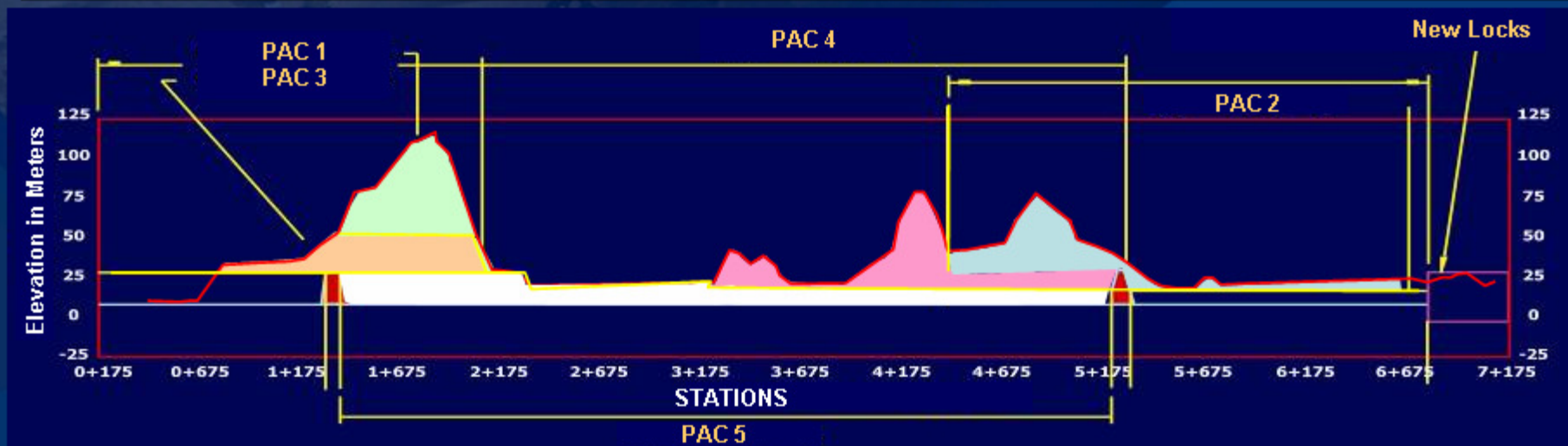
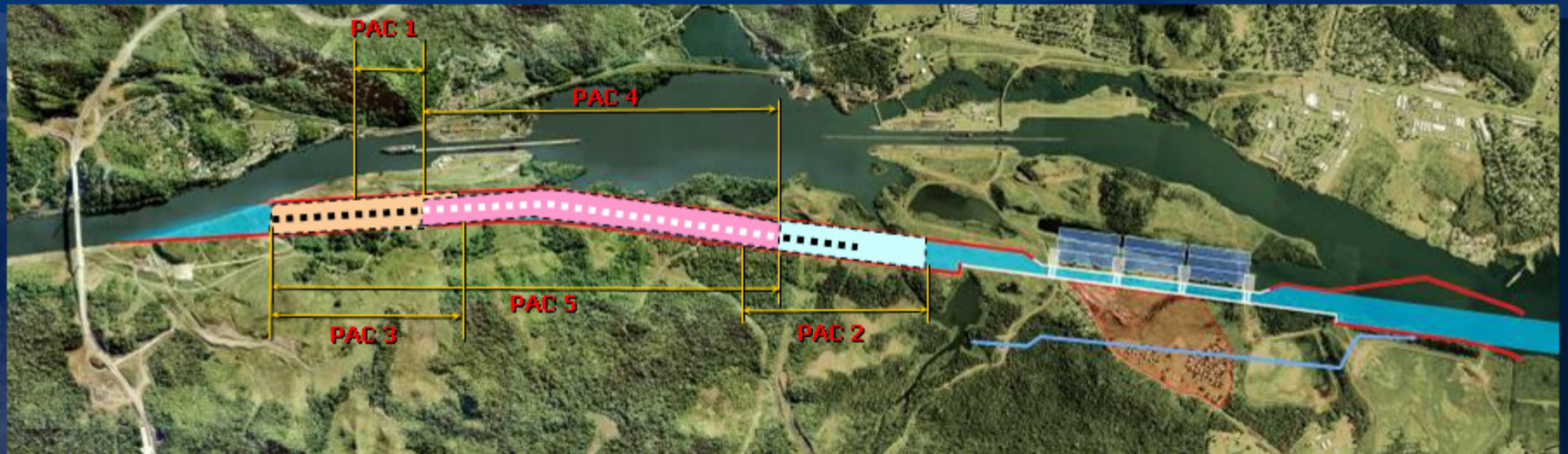


North Access Channel to New Pacific Locks



North Access Channel to New Pacific Locks

46M m³ of Dry Excavation - 5 Contracts



**North Access Channel to New Pacific Locks
Phase 1 – First Contract 7.4 Mm³
Bid was awarded July 17, 2007 and work has begun**

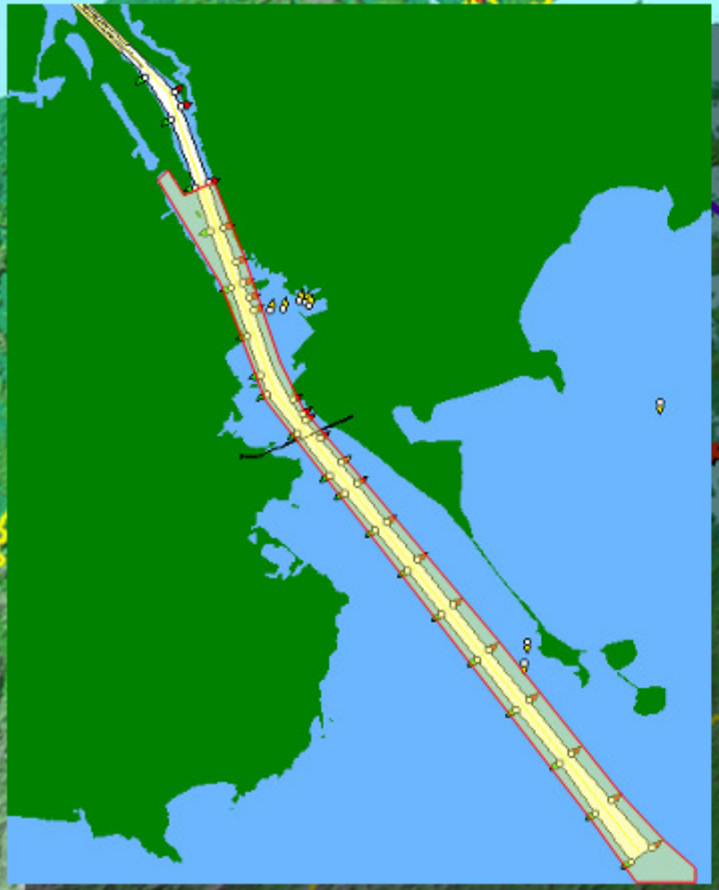


Construction Begins September 3, 2007



Pacific Entrance Deepening and Widening

RFP Published August 30, 2007





National Training Program – INADEH

Participants in Panama and Colon

Years 2007 and 2008

Source: INADEH



American Welding Society®

Trades	Training hours	Participants Year 2007	Participants Year 2008
Helpers			
Electrical helpers	590	750	1000
Welding Helpers	890	140	340
Masonry Helpers	300	880	1300
Woodwork helpers	300	140	430
Structural ironwork helpers	300	150	440
Total Helpers		2060	3510
Vocational			
Cement workers (Mason)	1050	150	880
Woodworker (Carpenter)	860	35	140
Explosives handler	160	80	
Structural ironworker	820	35	150
Total Vocational		300	1170
Certified specialists			
Rigger	350	40	120
Industrial Electrician	2050	20	150
Explosives specialist	400	30	
Drill rig operator	400	25	50
Crane operator	350	40	120
Heavy Equipment Mechanic	800	-	60
General Welder	1580	-	140
Specialized Welder	2040	-	140
Total Certified Specialists		155	780



National Training Program – INADEH

Participants in Panama and Colon Years 2007 and 2008

Source: INADEH



Trades	Training Hours	Participants Year 2007	Participants Year 2008
Heavy Equipment Operators (Heavy Equipment Training Academy)			
Dump Truck	350	260	260
Front Loader	350	30	60
Motor Grader	350	20	60
Excavator	350	80	120
Forklift	200		80
Drill Rig	350	60	120
Concrete Mixer	350		20
Roller	350	60	60
Track-Type Tractor (Dozer)	350	130	130
Total Heavy Equipment Operators		640	910
Foremen (Assessed by CAPAC)			
Concrete	324	35	60
Digging	364	70	120
Drilling	364	70	120
Woodworking	324	35	60
Structural ironworker	324	35	60
Total Foremen		245	420



Heavy Equipment Simulator & Field Training Program



Link to Tenders related to the Canal's Expansion Program Law 28 of 2006

Bienvenido al Canal de Panamá - PanCanal.com - Microsoft Internet Explorer

File Edit View Favorites Tools Help

Address <http://www.pancanal.com/esp/index.html>

ACP **Autoridad del Canal de Panamá**

Sobre ACP Noticias Operaciones Marítimas Información Financiera Recursos Humanos Plan Maestro Multimedia Nuestro País

Noticias del Canal

24-MAY-2007: Presidente de Junta Directiva de la ACP explicará en Brasil avances del Programa Ampliación y valor de la ruta del Canal »

Páginas principales para:

- Investigadores y Estudiantes
- Prensa
- Industria Marítima
- Clientes y Proveedores
- Niños

Un portavehículos y un portacontenedores en una de las esclusas.

Programa de Ampliación del Canal

Informes Trimestrales...
...al 31-Mar-2007
...al 31-Dic-2006

Licitaciones

InfoConferencia 2007

Ley 28 del 17 de julio de 2006

Propuesta de Ampliación

Artículos Seleccionados

ACP emite licitación para contratar Administrador de Programa para la Ampliación del Canal

La Junta Directiva de la Autoridad del Canal de Panamá aprobó el inicio del proceso de licitación para contratar una empresa que apoyará a la ACP en la administración del Programa de ampliación del Canal, luego de varias semanas de profundos debates en el seno de esta instancia y después de revisar los planteamientos presentados por la administración del Canal. [Más](#)

Secretario General de Naciones Unidas destaca aporte del Canal de Panamá al comercio mundial

El secretario general de Naciones Unidas, Ban Ki-moon, destacó hoy el aporte del Canal de Panamá al comercio mundial al cumplir una visita a la vía interoceánica en compañía del presidente de la República, Martín Torrijos. [Más](#)

Enlaces Directos

- Operaciones Marítimas

Local intranet

start Bienvenid... Bienvenid... 100% 10:20 AM

PANAMA CANAL EXPANSION PROGRAM



JORGE L. QUIJANO
ENGINEERING AND
PROGRAMS MANAGEMENT DEPARTMENT
PANAMA CANAL AUTHORITY

