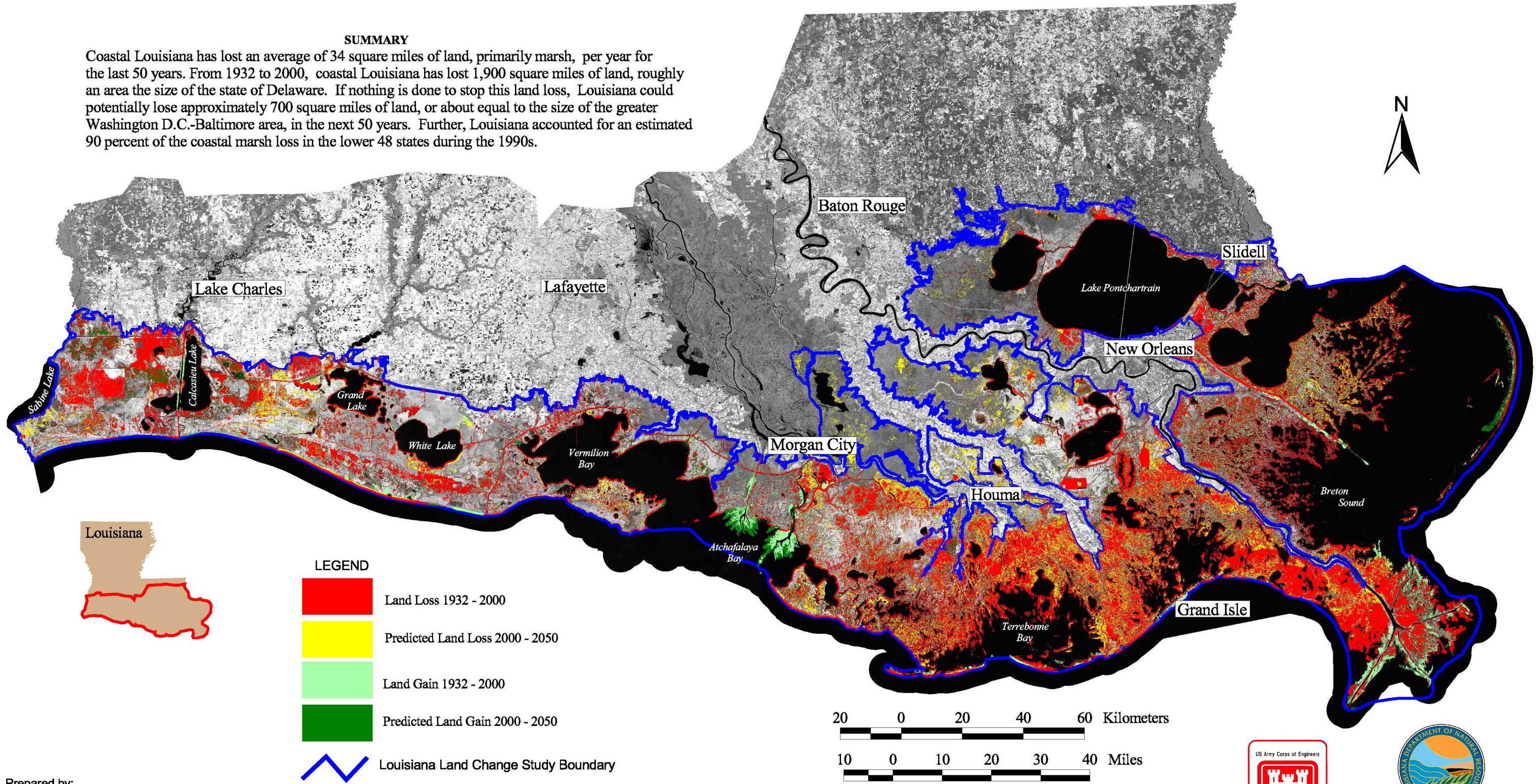


# 100+ Years of Land Change for Coastal Louisiana

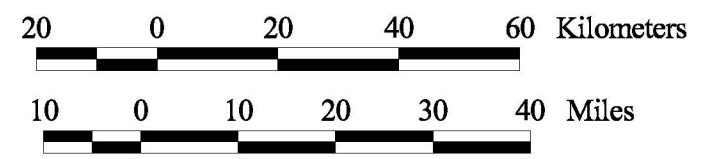
## SUMMARY

Coastal Louisiana has lost an average of 34 square miles of land, primarily marsh, per year for the last 50 years. From 1932 to 2000, coastal Louisiana has lost 1,900 square miles of land, roughly an area the size of the state of Delaware. If nothing is done to stop this land loss, Louisiana could potentially lose approximately 700 square miles of land, or about equal to the size of the greater Washington D.C.-Baltimore area, in the next 50 years. Further, Louisiana accounted for an estimated 90 percent of the coastal marsh loss in the lower 48 states during the 1990s.



**LEGEND**

- Land Loss 1932 - 2000
- Predicted Land Loss 2000 - 2050
- Land Gain 1932 - 2000
- Predicted Land Gain 2000 - 2050
- Louisiana Land Change Study Boundary



Prepared by:  
U.S. Geological Survey  
National Wetlands Research Center  
Lafayette, LA

Background is 2000 Thematic Mapper panchromatic band.

